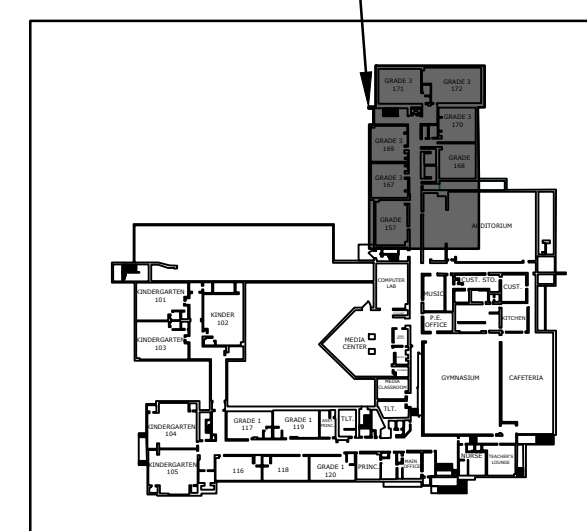


SECOND FLOOR

- ROOM 249 SCOPE OF WORK NOTES PHASE I**
 - SET UP EDGE GUARD AT ROOM ENTRANCE
 - SET UP CONTAINMENT, WASH ROOM, NEGATIVE AIR MACHINE AND CRITICAL BARRIERS ON WINDOWS, VENTS AND DOORS
 - REMOVE MILLWORK;
 - REMOVE APPROXIMATELY 650 SF OF VINYL WALL PAPER;
 - REMOVE APPROXIMATELY 90 SF OF DRYWALL AROUND WINDOW SYSTEM;
 - CLEAN EXPOSED FIN TUBE,
 - CLEAN 2 RETURNS AND 1 VENT;
 - REMOVE 2 CEILING TILE
- ROOM 250 SCOPE OF WORK NOTES PHASE I**
 - SET UP EDGE GUARD AT ROOM ENTRANCE
 - SET UP CONTAINMENT, WASH ROOM, NEGATIVE AIR MACHINE AND CRITICAL BARRIERS ON WINDOWS, VENTS AND DOORS
 - REMOVE MILLWORK;
 - REMOVE APPROXIMATELY 650 SF OF VINYL WALL PAPER;
 - REMOVE APPROXIMATELY 90 SF OF DRYWALL AROUND WINDOW SYSTEM;
 - CLEAN EXPOSED FIN TUBE, CLEAN 1 RETURN AND 1 VENT; REMOVE 2 CEILING TILE
- ROOM 251 SCOPE OF WORK NOTES PHASE 2**
 - SET UP EDGE GUARD AT ROOM ENTRANCE
 - SET UP CONTAINMENT, WASH ROOM, NEGATIVE AIR MACHINE AND CRITICAL BARRIERS ON WINDOWS, VENTS AND DOORS
 - REMOVE MILLWORK;
 - INSPECT ROOF DRAIN AND REPAIR ROOF DRAIN IF NEEDED
 - REMOVE APPROXIMATELY 775 SF OF VINYL WALL PAPER;
 - REMOVE APPROXIMATELY 130 SF OF DRYWALL AROUND WINDOW SYSTEM;
 - CLEAN EXPOSED FIN TUBE, CLEAN 2 RETURNS AND 1 VENT; REMOVE 4 CEILING TILE
- ROOM 252 SCOPE OF WORK NOTES (DIMENSIONS SAME AS 167) PHASE 3**
 - SET UP EDGE GUARD AT ROOM ENTRANCE
 - SET UP CONTAINMENT, WASH ROOM, NEGATIVE AIR MACHINE AND CRITICAL BARRIERS ON WINDOWS, VENTS AND DOORS
 - REMOVE MILLWORK;
 - INSPECT ROOF DRAIN AND REPAIR ROOF DRAIN IF NEEDED
 - REMOVE APPROXIMATELY 840 SF OF VINYL WALL PAPER;
 - REMOVE APPROXIMATELY 75 SF OF DRYWALL AROUND WINDOW SYSTEM;
 - CLEAN EXPOSED FIN TUBE,
 - CLEAN 2 RETURNS AND 1 VENT;
 - REMOVE 7 CEILING TILE
- ROOM 253 SCOPE OF WORK NOTES PHASE 2**
 - SET UP EDGE GUARD AT ROOM ENTRANCE
 - SET UP CONTAINMENT, WASH ROOM, NEGATIVE AIR MACHINE AND CRITICAL BARRIERS ON WINDOWS, VENTS AND DOORS
 - REMOVE MILLWORK;
 - INSPECT ROOF DRAIN AND REPAIR
 - REMOVE APPROXIMATELY 775 SF OF VINYL WALL PAPER;
 - REMOVE APPROXIMATELY 130 SF OF DRYWALL AROUND WINDOW SYSTEM;
 - CLEAN EXPOSED FIN TUBE,
 - CLEAN 2 RETURNS AND 1 VENT;
 - REMOVE 5 CEILING TILE
- ROOM 254 SCOPE OF WORK NOTES PHASE 3**
 - SET UP EDGE GUARD AT ROOM ENTRANCE
 - SET UP CONTAINMENT, WASH ROOM, NEGATIVE AIR MACHINE AND CRITICAL BARRIERS ON WINDOWS, VENTS AND DOORS
 - REMOVE MILLWORK;
 - INSPECT ROOF DRAIN AND REPAIR IF NEEDED
 - REMOVE APPROXIMATELY 840 SF OF VINYL WALL PAPER;
 - REMOVE APPROXIMATELY 90 SF OF DRYWALL AROUND WINDOW SYSTEM;
 - CLEAN EXPOSED FIN TUBE,
 - CLEAN 2 RETURNS AND 1 VENT;
 - REMOVE 10 CEILING TILE;
 - REPAIR INSULATION ALONG 4-INCH PVC PIPING (MULTIPLE LOCATIONS)
- ROOM 255 SCOPE OF WORK NOTES PHASE**
 - SET UP CONTAINMENT, WASH ROOM, NEGATIVE AIR MACHINE AND CRITICAL BARRIERS ON WINDOWS, VENTS AND DOORS
 - REMOVE APPROXIMATELY 825 SF OF VINYL WALL PAPER
 - REMOVE APPROXIMATELY 70 SF OF SHEETROCK AROUND WINDOW UNIT
 - CLEAN EXPOSED FIN TUBE RADIANT PIPING AFTER MILLWORK IS REMOVED
 - CLEAN 2 RETURNS AND 1 HEAT VENT
 - REMOVE 10 CEILING TILE
 - INSPECT INSULATION ON PIPING AND HVAC SYSTEM AND REPAIR ACCORDINGLY
- ROOM 256 SCOPE OF WORK NOTES PHASE**
 - SET UP CONTAINMENT, WASH ROOM, NEGATIVE AIR MACHINE AND CRITICAL BARRIERS ON WINDOWS, VENTS AND DOORS
 - REMOVE APPROXIMATELY 1,100 SF OF VINYL WALL PAPER
 - REMOVE APPROXIMATELY 130 SF OF SHEETROCK AROUND WINDOW UNIT
 - CLEAN EXPOSED FIN TUBE RADIANT PIPING AFTER MILLWORK IS REMOVED
 - CLEAN 3 RETURNS AND 1 HEAT VENT
 - REMOVE 10 CEILING TILE
 - INSPECT INSULATION ON PIPING AND HVAC SYSTEM AND REPAIR ACCORDINGLY
- AREA BETWEEN ROOMS 255 & 256**
 - SET UP EDGE GUARD AT ROOM ENTRANCE
 - SET UP CONTAINMENT, WASH ROOM, NEGATIVE AIR MACHINE AND CRITICAL BARRIERS ON WINDOWS, VENTS AND DOORS
 - HEPA VAC ABOVE CEILING TILE
 - REMOVE APPROXIMATELY 40 SF OF SHEETROCK AROUND EXPANSION JOINT
 - REMOVE APPROXIMATELY 10 LF OF STAINED PIPE INSULATION
 - REMOVE BLACK WATER COLLECTION BUCKET LOCATED ABOVE CEILING TILE
 - REPAIR ROOF DRAIN (WITH PLASTIC BAG WRAPPED AROUND IT)
 - REMOVE 11 CEILING TILE

AREA SHOWN



Stark Elementary School
City of Stamford
Stamford, CT

| MARK | DATE | DESCRIPTION |
|-------------|----------------------------|-------------|
| PROJECT NO: | S2087 | |
| DATE: | 1/31/2019 | |
| FILE: | Stark Mold Remediation.dwg | |
| DRAWN BY: | WAC | |
| CHECKED: | XX | |
| APPROVED: | XX | |

Area 7

SCALE: NTS

Figure 3.4

Plot Created: 1/31/2019 10:09 AM By: wachampagne
 Plotted On: Jan 31, 2019 2:10 PM
 Tighe & Bond: \\S:\S2087 - Stamford\1033 - Mold Remediation - Consulting\Site\Drawings\CAD\Stark_Mold Remediation.dwg