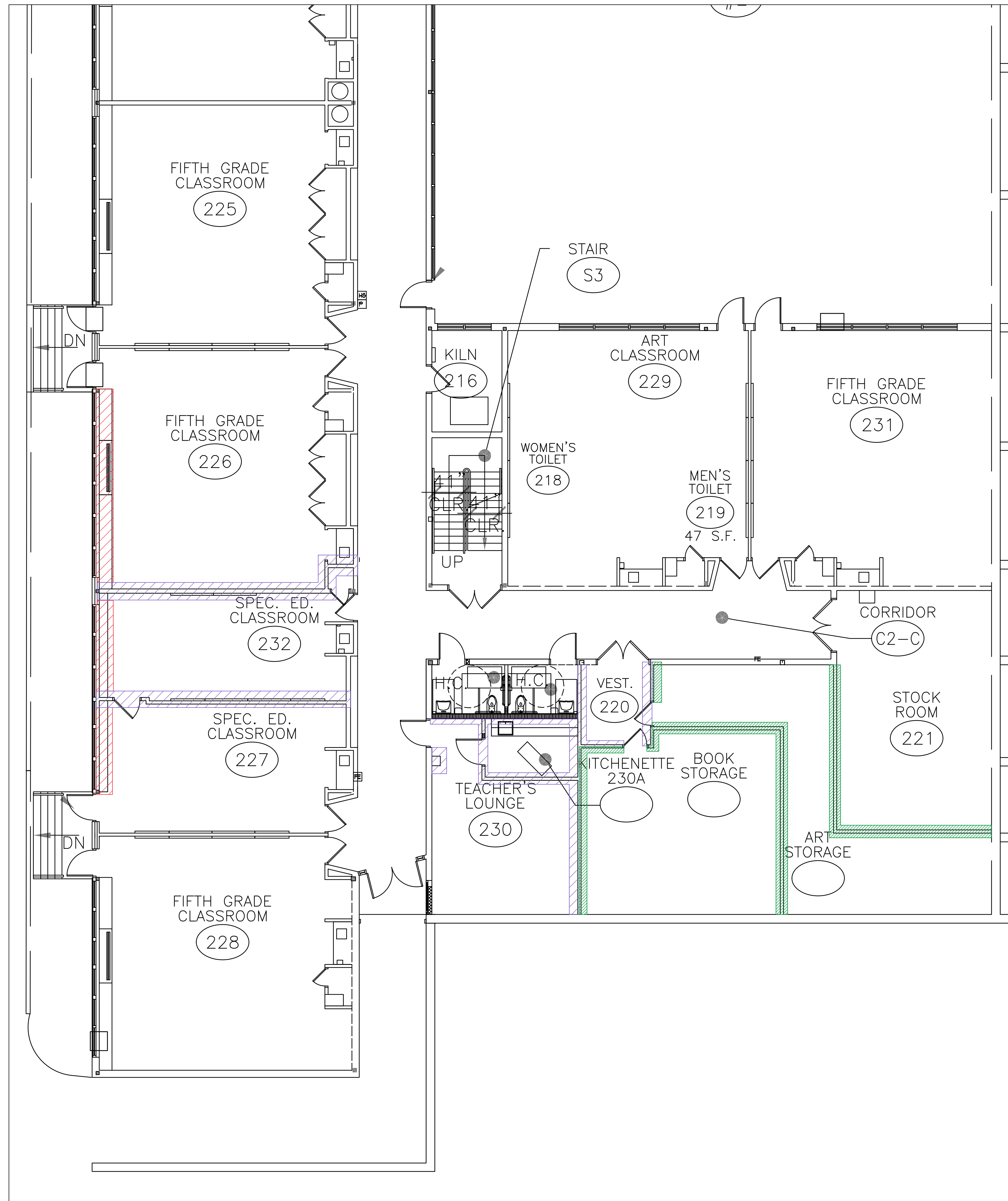





Plot Date: 3/7/2019  
Printed On: Mar 07, 2019 4:51pm By: wachampagne  
Tighe & Bond: \\tighebond.com\data\Projects\S\S2087\Stamford\Drawings\CAD\Northeast Mold Remediation.dwg



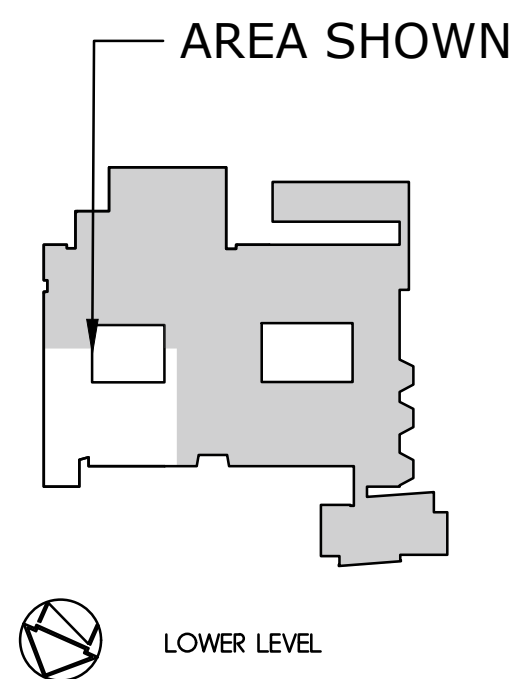
**LEGEND**

-  REMOVE DRYWALL/ASBESTOS TAPING COMPOUND IN ENTIRETY  
CLEAN AND DISINFECT AREA.
-  REMOVE DRYWALL (NOT TAPED/COMPOUNDED) FROM FLOOR TO FOUR  
FEET THROUGHOUT.  
REMOVE DRYWALL (NOT TAPED/COMPOUNDED) FROM FLOOR TO  
CEILING AND TWO FEET BACK FROM FOUNDATION WALLS.  
CLEAN AND DISINFECT AREA.
-  REMOVE MILLWORK CABINET IN ORDER TO CONDUCT AN ASSESSMENT  
OF BACK SIDE OF MILLWORK AND EXTERIOR WALL.

**GENERAL NOTES**

ASBESTOS DRYWALL WORK SHALL BE CONDUCTED WITHIN NEGATIVE  
PRESSURE ASBESTOS CONTAINMENTS.  
NON-ASBESTOS DRYWALL REMOVAL WORK SHALL BE CONDUCTED WITHIN  
ONE LAYER NEGATIVE PRESSURE CONTAINMENTS.

**DRAFT - NOT FOR  
CONSTRUCTION**



**Northeast  
Elementary  
School**

City of Stamford

Stamford, CT

MARK	DATE	DESCRIPTION
PROJECT NO: S2087		
DATE: 3/7/2019		
FILE: Northeast Mold Remediation.dwg		
DRAWN BY: WAC		
CHECKED: XX		
APPROVED: XX		

**AREA 1**

SCALE: NOT TO SCALE

**FIGURE 3.1**