

OPEN SPACE:
 2,731 SF is provided at grade
 4,068 SF is provided on the roof
 6,799 SF total is provided
 1,508 SF additional planted areas

DIMARZO & BERECZKY

191 LLOYD DRIVE
 FAIRFIELD, CT 06825
 203.857.4110

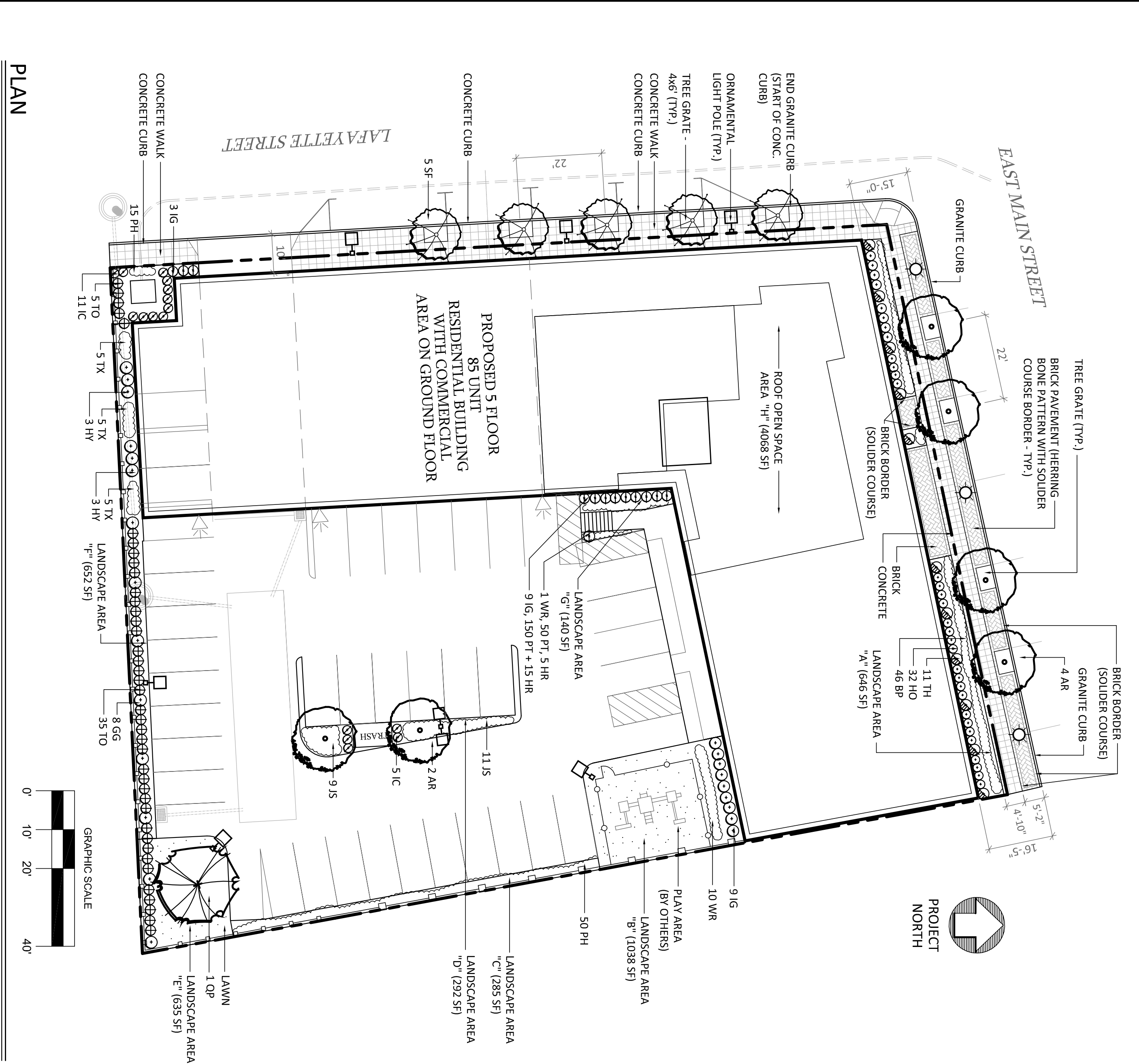
LAND SURVEYING
 CIVIL ENGINEERING
 PERMITTING

OPEN SPACE EXHIBIT PREPARED FOR 819 EAST MAIN STREET STAMFORD, CT

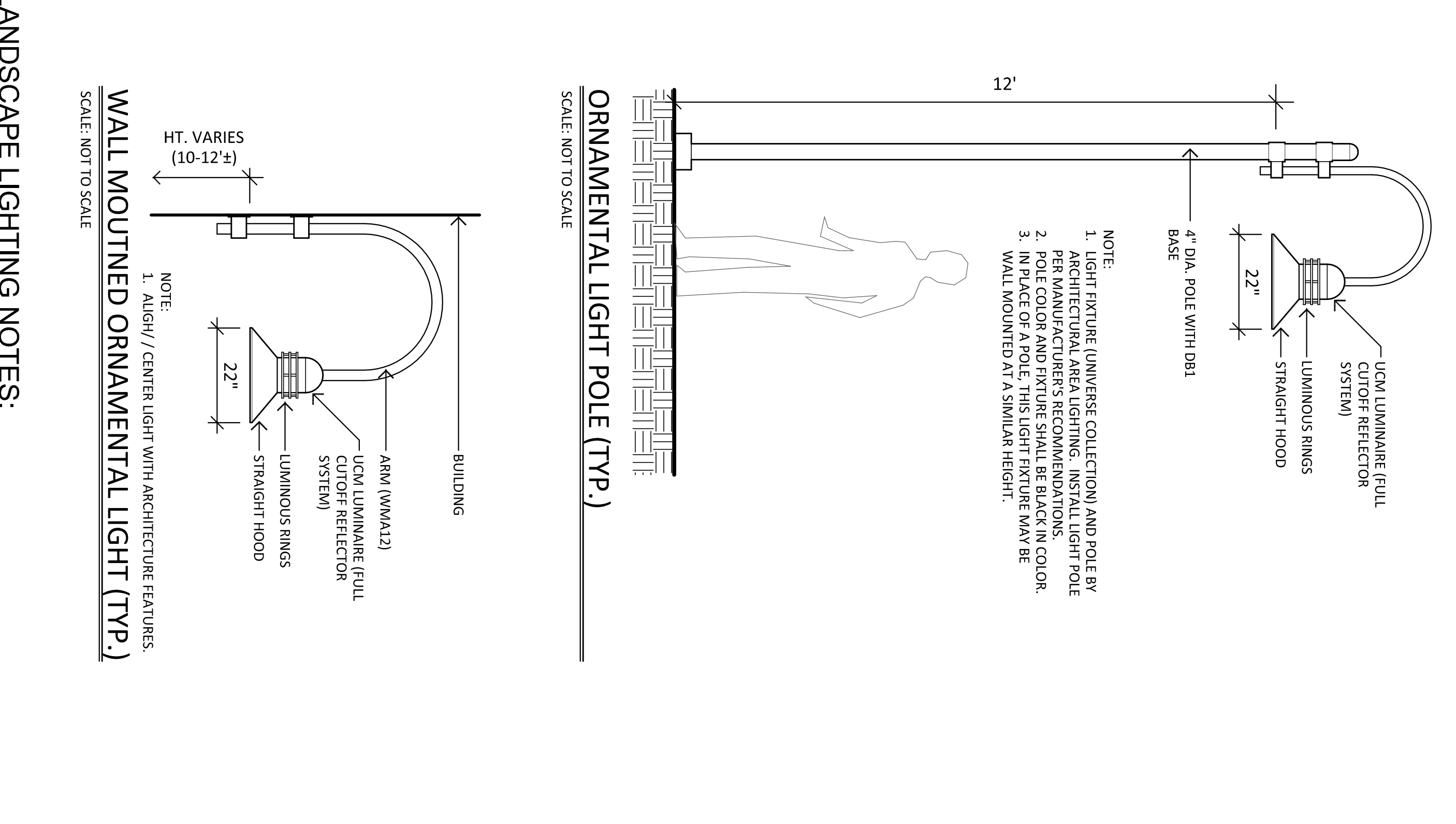
DATE: 7/23/2021

SCALE: 0 30
 1" = 30'

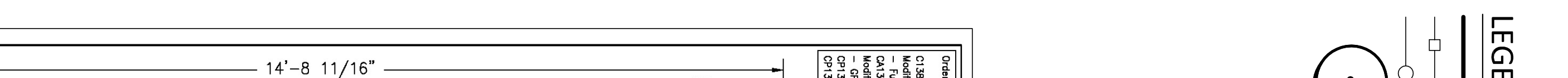




PLAN
SCALE: 1"=20'



ORNAMENTAL LIGHT POLE (TYP.)
SCALE: NOT TO SCALE



WALL MOUNTED ORNAMENTAL LIGHT (TYP.)
SCALE: NOT TO SCALE

LANDSCAPE LIGHTING NOTES:

1. SITE LIGHTING INFORMATION AND LIGHTING PLANS PREPARED BY ENVIRONMENTAL LAND SOLUTIONS, LLC ARE DESIGNED FOR GENERAL LANDSCAPE AESTHETIC PURPOSES ONLY. LIGHTING INFORMATION SHOWN ON THIS PLAN SHALL NOT BE USED FOR SECURITY OR SAFETY PURPOSES.
2. LOCATION AND TYPE OF LIGHT FIXTURES ARE TYPICAL AND MAY VARY BASED ON ACTUAL FIELD CONDITIONS, SITE AND ARCHITECTURAL PLAN REVISIONS, USE OF EXISTING LIGHT FIXTURES, AND BUILDING MOUNTED LIGHTING, AESTHETICS AND CONSULTATIONS WITH LIGHTING CONSULTANT AND/OR MANUFACTURER.
3. THIS PLAN ASSUMES THAT THE BUILDING WILL HAVE WALL MOUNTED FIXTURES (BY OTHERS) TO LIGHT THE FACADE AND ADJACENT LANDSCAPE AREAS (INCLUDING WALKS AND DOORS).
4. INSTALL LIGHT FIXTURES AS RECOMMENDED BY THE MANUFACTURER.

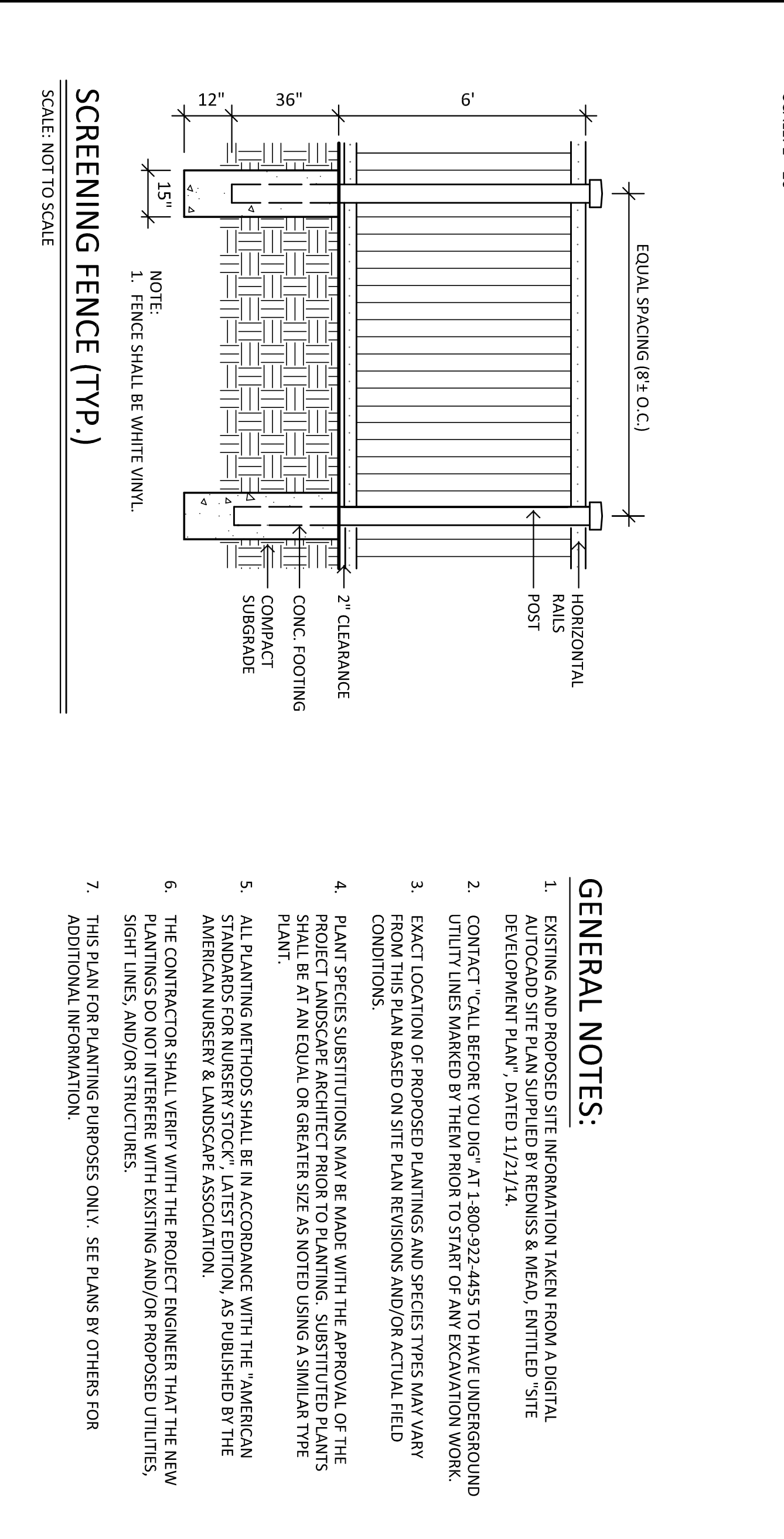
GENERAL NOTES:

1. EXISTING AND PROPOSED SITE INFORMATION TAKEN FROM A DIGITAL AUTOCADD SITE PLAN SUPPLIED BY REMISS & MEAD, ENTITLED "SITE DEVELOPMENT PLAN", DATED 11/21/14.
2. CONTRACTOR CALL BEFORE YOU DIG AT 1-800-922-4455 TO HAVE UNDERGROUND UTILITY LINES MARKED BY THEM PRIOR TO START OF ANY EXCAVATION WORK.
3. EXACT LOCATION OF PROPOSED PLANTINGS AND SPECIES TYPES MAY VARY FROM THIS PLAN BASED ON SITE PLAN REVISIONS AND/OR ACTUAL FIELD CONDITIONS.
4. PLANT SPECIES SUBSTITUTIONS MAY BE MADE WITH THE APPROVAL OF THE PROJECT LANDSCAPE ARCHITECT PRIOR TO PLANTING. SUBSTITUTED PLANTS SHALL BE AT AN EQUAL OR GREATER SIZE AS NOTED USING A SIMILAR TYPE PLANT.
5. ALL PLANTING METHODS SHALL BE IN ACCORDANCE WITH THE "AMERICAN STANDARDS FOR NURSERY STOCK, LATEST EDITION, AS PUBLISHED BY THE AMERICAN NURSERY & LANDSCAPE ASSOCIATION."
6. THE CONTRACTOR SHALL VERIFY WITH THE PROJECT ENGINEER THAT THE NEW PLANTINGS DO NOT INTERFERE WITH EXISTING AND/OR PROPOSED UTILITIES, SIGHT LINES, AND/OR STRUCTURES.
7. THIS PLAN FOR PLANTING PURPOSES ONLY. SEE PLANS BY OTHERS FOR ADDITIONAL INFORMATION.

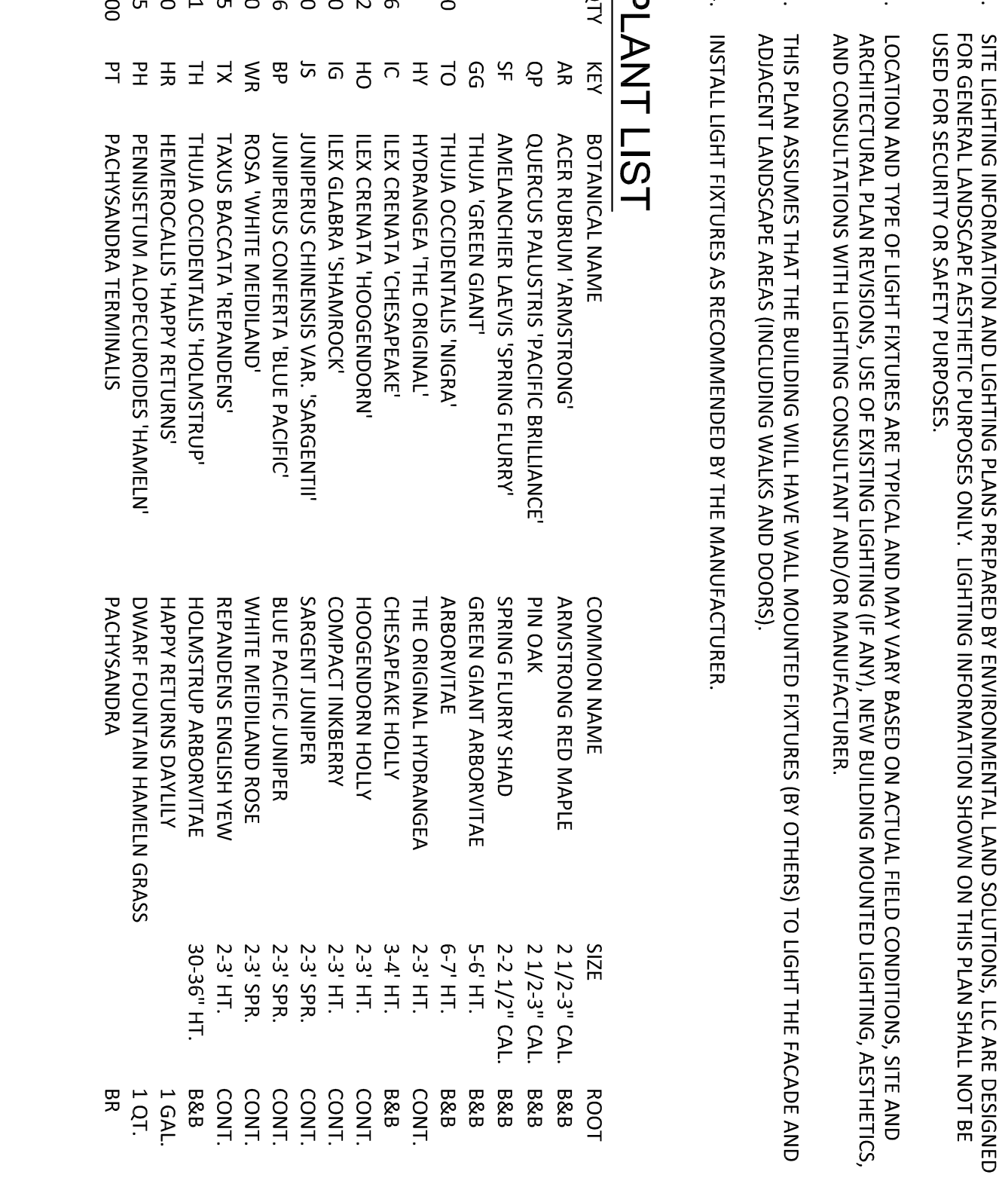
SCREENING FENCE (TYP.)



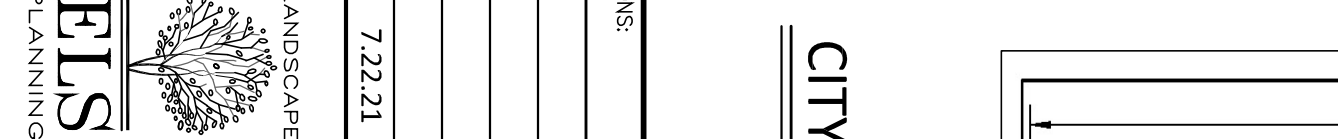
SCALE: NOT TO SCALE



PLAN
SCALE: 1"=20'



ORNAMENTAL LIGHT POLE (TYP.)
SCALE: NOT TO SCALE



WALL MOUNTED ORNAMENTAL LIGHT (TYP.)
SCALE: NOT TO SCALE

LANDSCAPE LIGHTING NOTES:

1. SITE LIGHTING INFORMATION AND LIGHTING PLANS PREPARED BY ENVIRONMENTAL LAND SOLUTIONS, LLC ARE DESIGNED FOR GENERAL LANDSCAPE AESTHETIC PURPOSES ONLY. LIGHTING INFORMATION SHOWN ON THIS PLAN SHALL NOT BE USED FOR SECURITY OR SAFETY PURPOSES.
2. LOCATION AND TYPE OF LIGHT FIXTURES ARE TYPICAL AND MAY VARY BASED ON ACTUAL FIELD CONDITIONS, SITE AND ARCHITECTURAL PLAN REVISIONS, USE OF EXISTING LIGHT FIXTURES, AND BUILDING MOUNTED LIGHTING, AESTHETICS AND CONSULTATIONS WITH LIGHTING CONSULTANT AND/OR MANUFACTURER.
3. THIS PLAN ASSUMES THAT THE BUILDING WILL HAVE WALL MOUNTED FIXTURES (BY OTHERS) TO LIGHT THE FACADE AND ADJACENT LANDSCAPE AREAS (INCLUDING WALKS AND DOORS).
4. INSTALL LIGHT FIXTURES AS RECOMMENDED BY THE MANUFACTURER.

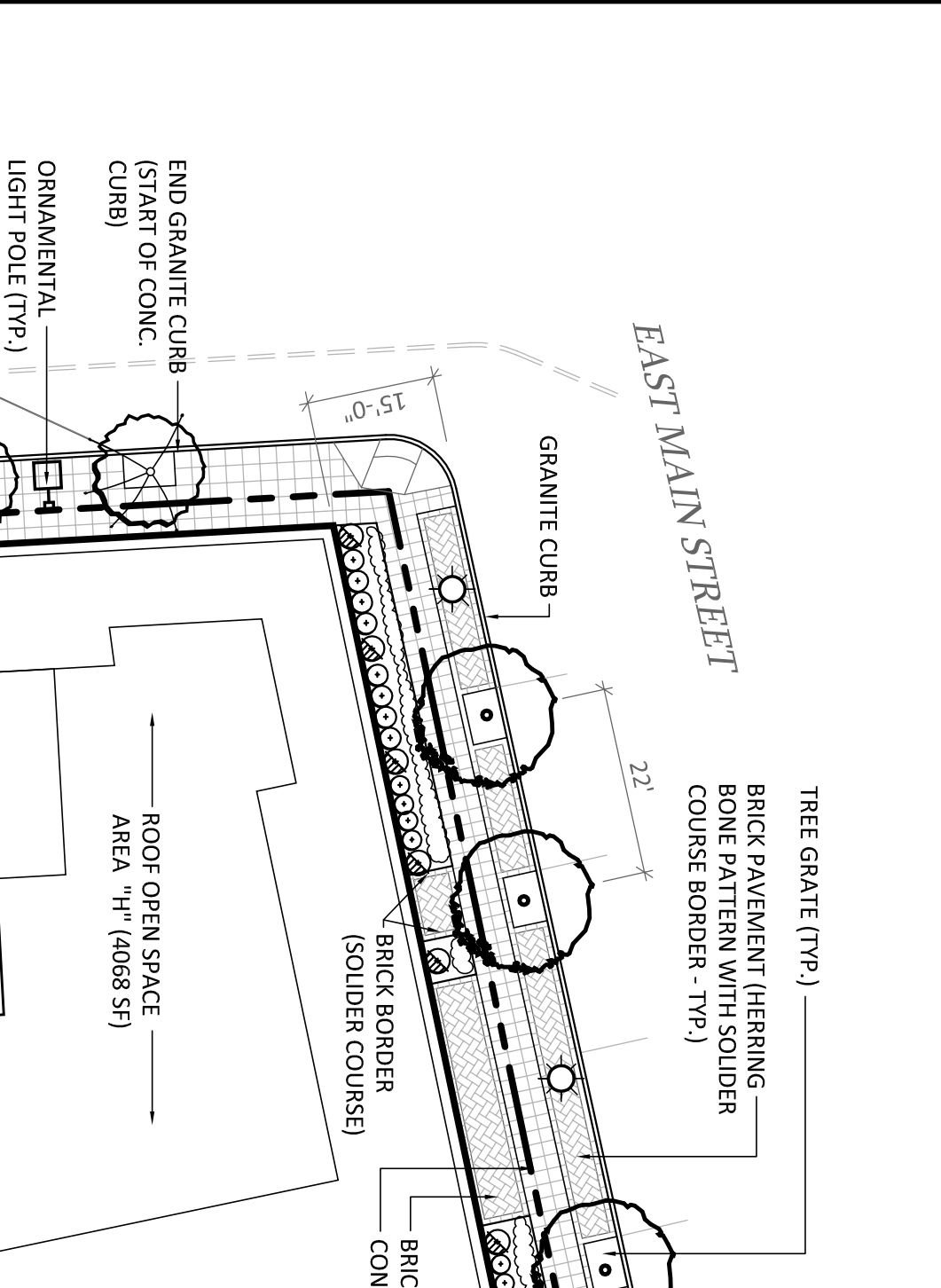
GENERAL NOTES:

1. EXISTING AND PROPOSED SITE INFORMATION TAKEN FROM A DIGITAL AUTOCADD SITE PLAN SUPPLIED BY REMISS & MEAD, ENTITLED "SITE DEVELOPMENT PLAN", DATED 11/21/14.
2. CONTRACTOR CALL BEFORE YOU DIG AT 1-800-922-4455 TO HAVE UNDERGROUND UTILITY LINES MARKED BY THEM PRIOR TO START OF ANY EXCAVATION WORK.
3. EXACT LOCATION OF PROPOSED PLANTINGS AND SPECIES TYPES MAY VARY FROM THIS PLAN BASED ON SITE PLAN REVISIONS AND/OR ACTUAL FIELD CONDITIONS.
4. PLANT SPECIES SUBSTITUTIONS MAY BE MADE WITH THE APPROVAL OF THE PROJECT LANDSCAPE ARCHITECT PRIOR TO PLANTING. SUBSTITUTED PLANTS SHALL BE AT AN EQUAL OR GREATER SIZE AS NOTED USING A SIMILAR TYPE PLANT.
5. ALL PLANTING METHODS SHALL BE IN ACCORDANCE WITH THE "AMERICAN STANDARDS FOR NURSERY STOCK, LATEST EDITION, AS PUBLISHED BY THE AMERICAN NURSERY & LANDSCAPE ASSOCIATION."
6. THE CONTRACTOR SHALL VERIFY WITH THE PROJECT ENGINEER THAT THE NEW PLANTINGS DO NOT INTERFERE WITH EXISTING AND/OR PROPOSED UTILITIES, SIGHT LINES, AND/OR STRUCTURES.
7. THIS PLAN FOR PLANTING PURPOSES ONLY. SEE PLANS BY OTHERS FOR ADDITIONAL INFORMATION.

SCREENING FENCE (TYP.)



SCALE: NOT TO SCALE

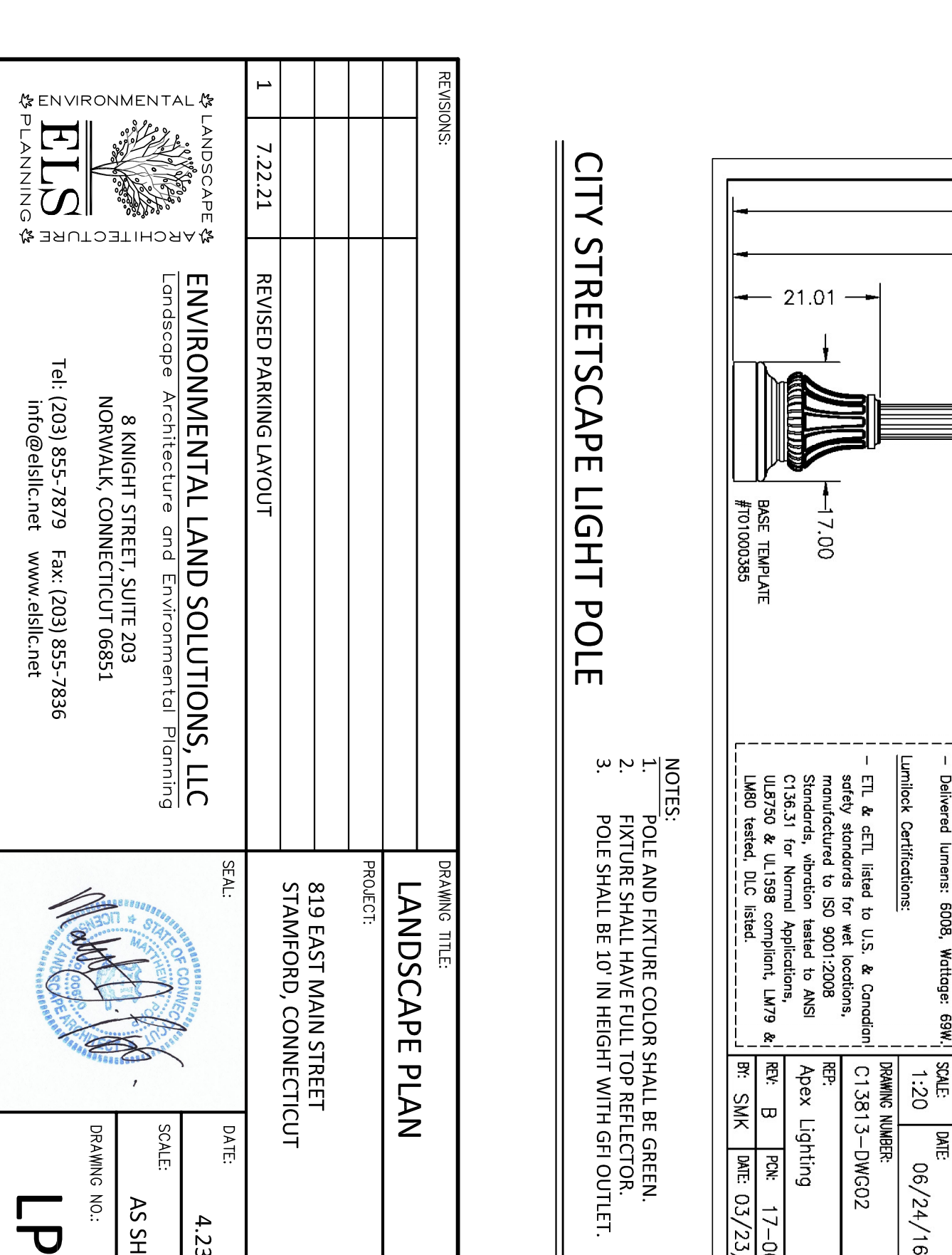


LEGEND

- PROPERTY LINE
- NEW SCREENING FENCE
- PLAY AREA FENCE
- NEW DECIDUOUS SHADE TREE
- NEW DECIDUOUS SMALL TREE
- NEW SHRUB
- NEW CITY STREETSCAPE LIGHT POLE
- NEW ORNAMENTAL LIGHT POLE (SINGLE/DOUBLE FIXTURE)
- NEW WALL MOUNTED ORNAMENTAL LIGHT
- NEW / EX. LAWN

PLANT LIST

QTY	KEY	BOTANICAL NAME	COMMON NAME	SIZE	ROOT
AR	AR	AGER RUBRUM 'ARMSTRONG'	ARMSTRONG RED WAPLE	2 1/2"-3" CAL.	B88
QP	QP	QUEQUOS PALUSTRIS 'PACIFIC BRILLIANCE'	PIN OAK	2 1/2"-3" CAL.	B88
SF	SF	AMELANCHIER LAEVIS 'SPRING FLURRY'	SPRING GIANT ARBORVITAE	2-2 1/2" CAL.	B88
THUA	THUA	THUJA 'GREEN GIANT'	GREEN GIANT ARBORVITAE	5-6' HT.	B88
TO	TO	THUJA OCCIDENTALIS 'NIGRA'	ARBORVITAE	6-7' HT.	B88
HY	HY	HYDRANGEA 'THE ORIGINAL'	THE ORIGINAL HYDRANGEA	2-3' HT.	B88
IC	IC	ILEX CHINENSIS 'CHESAPEAKE'	CHESAPEAKE HOLLY	3-4' HT.	B88
HO	HO	HOOGENDOORN HOLY	HOOGENDOORN HOLY	2-3' HT.	B88
IG	IG	ILEX GLABRA 'SHAMROCK'	COMPACT JUNIPER	2-3' HT.	B88
JS	JS	JUNIPERUS CHINENSIS VAR. 'SARGENTII'	SARGENT JUNIPER	2-3' SPR.	CONT.
BP	BP	ROSA 'WHITE MIDLAND'	WHITE MIDLAND ROSE	2-3' SPR.	CONT.
TX	TX	TAXUS BACATA 'REPENDENS'	REPENDENS ENGLISH YEW	2-3' HT.	CONT.
TH	TH	THUJA OCCIDENTALIS 'HOLMSTRUP'	HOLMSTRUP ARBORVITAE	2-3' HT.	CONT.
HR	HR	HEMIBOCALIS 'HAPPY RETURNS'	HAPPY RETURNS DAVILIA	30-50" HT.	1 GAL.
PH	PH	PENNSYLTUM ALPECUROIDES 'HAMELET'	DWARF FOUNTAIN HAMELET GRASS	1.0T.	1.0T.
PT	PT	PACHYSANDBA TERMINALS	PACHYSANDBA		BR



CITY STREETSCAPE LIGHT POLE

Color: (Specify)

Scale: 1:16

PHILIPS HADCO

100 Oakley Drive
Lithonia, GA 30058
Tel: 770-529-9289
www.philips.com

City of Stamford - LED
H. Kuhn
SCALE: DATE: 06/24/16
DRAWING NUMBER: C13613-DWG02
PROJECT: Apex Lighting
REV: B DATE: 17-007
REV: SMK DATE: 03/23/17

NOTES:

1. POLE AND FIXTURE COLOR SHALL BE GREEN.
2. FIXTURE SHALL HAVE FULL TOP REFLECTOR.
3. POLE SHALL BE 10' IN HEIGHT WITH GFI OUTLET.

REVISIONS:

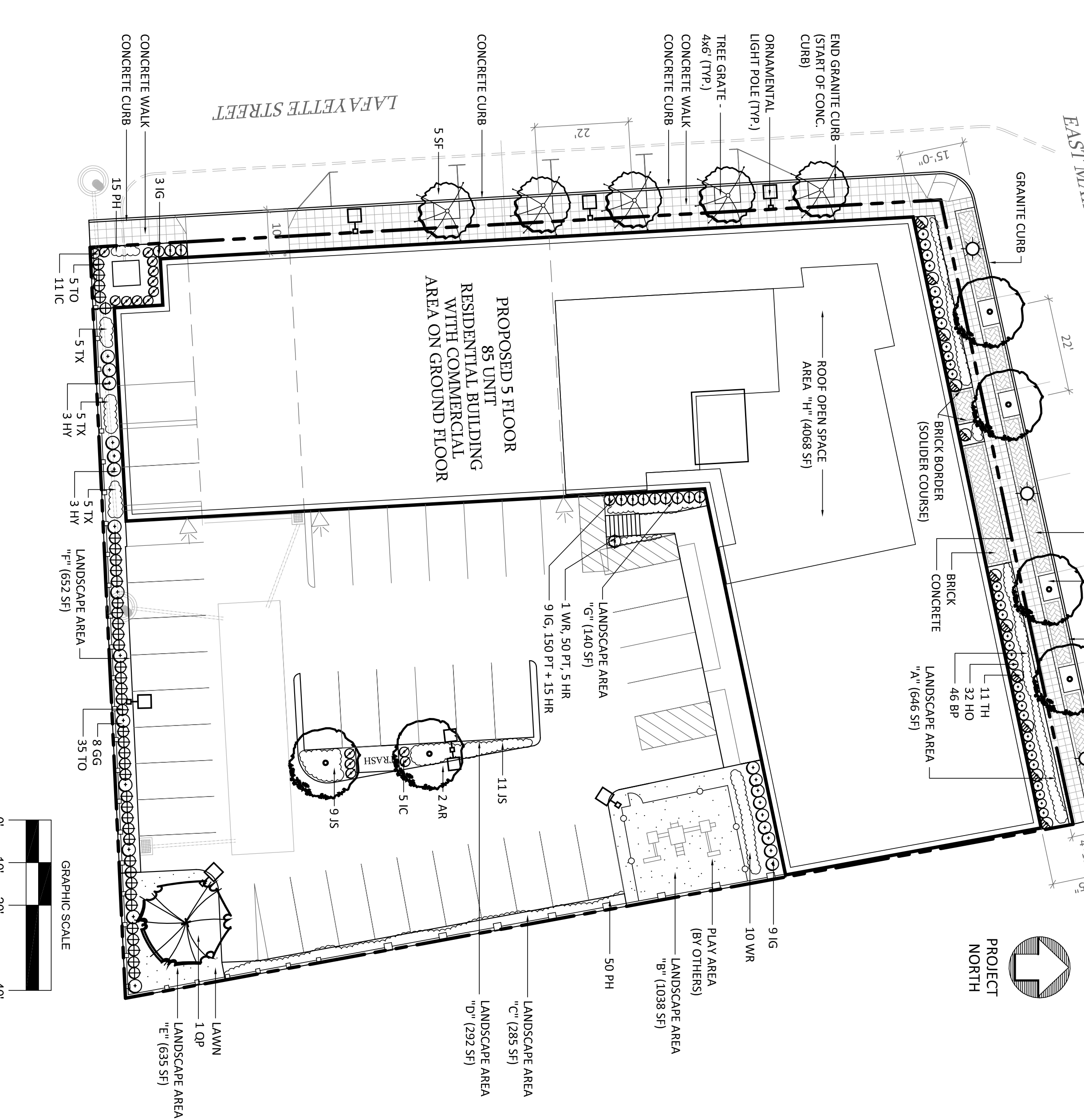
NO.	DATE	DESCRIPTION
1	7.22.21	REVISED PARKING LAYOUT

ENVIRONMENTAL LAND SOLUTIONS, LLC
Landscape Architecture and Environmental Planning
8 KNIGHT STREET SUITE 203
NORWALK, CONNECTICUT 06851
Tel: (203) 855-7879 Fax: (203) 855-7836
info@elc.net www.elc.net

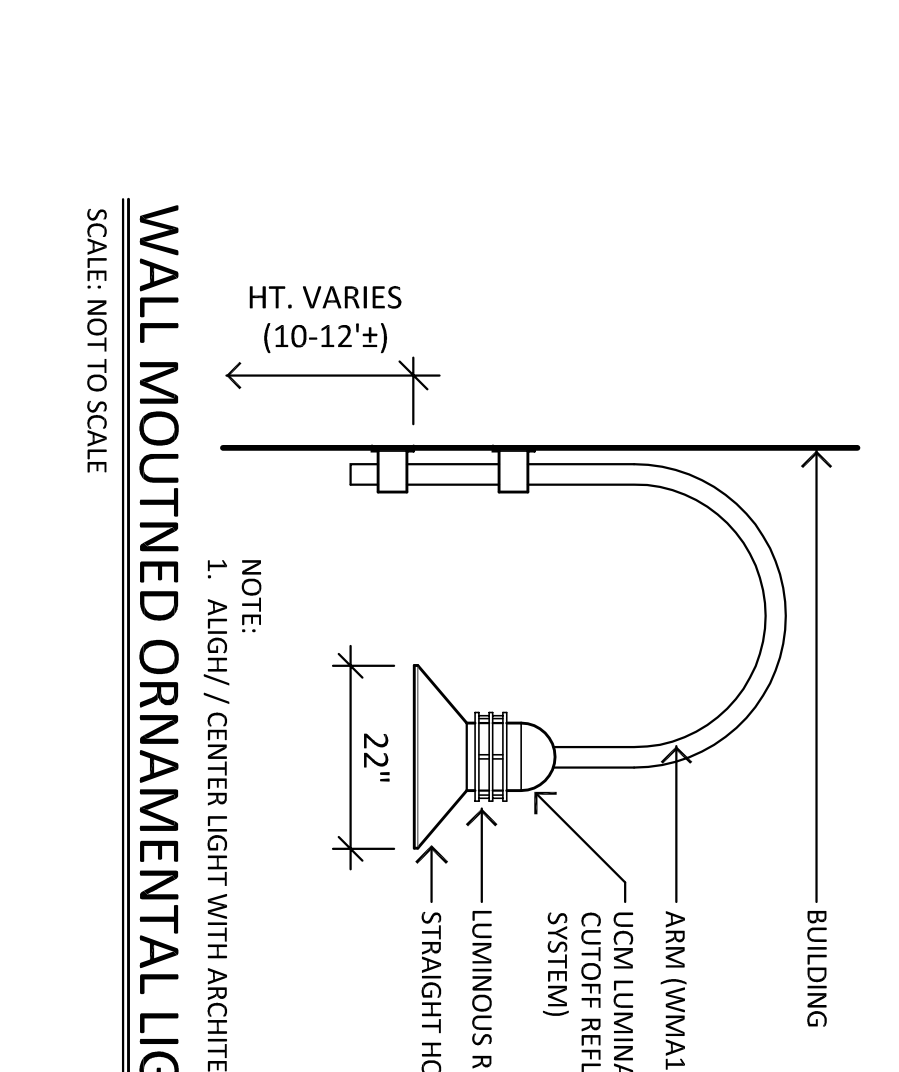
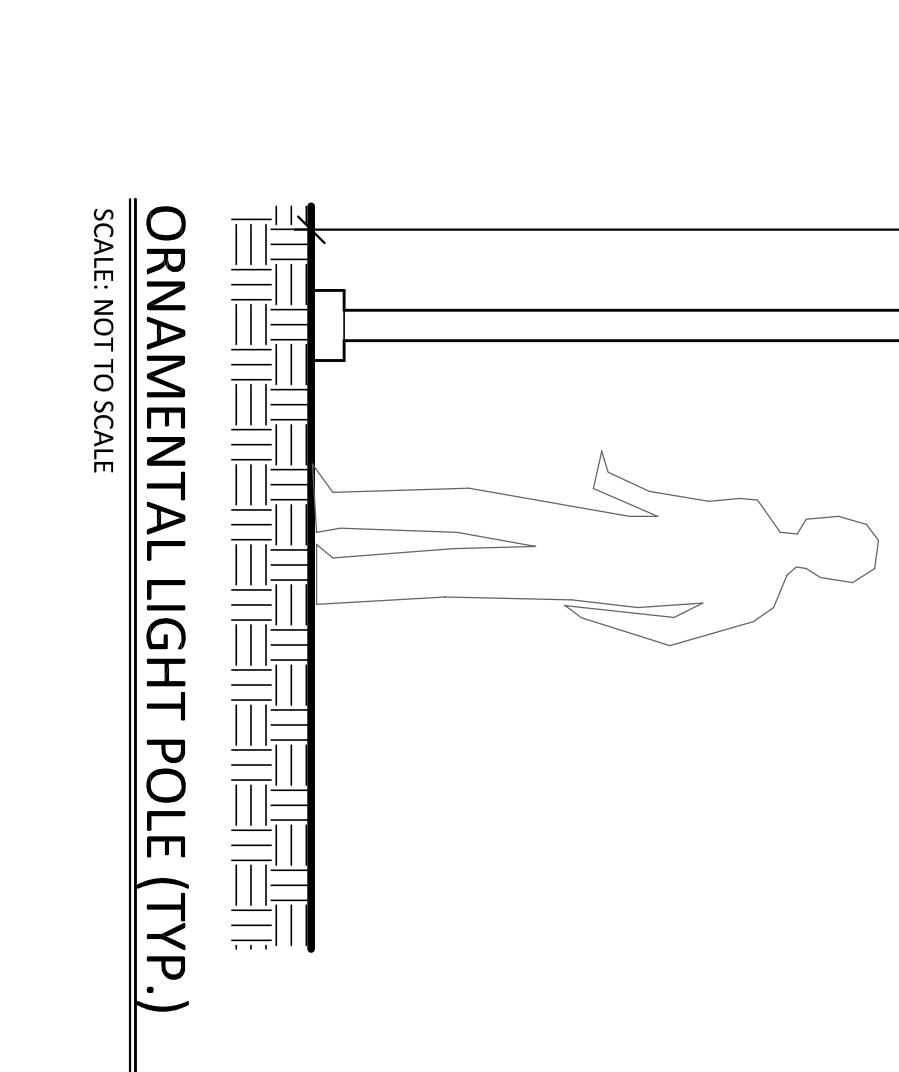
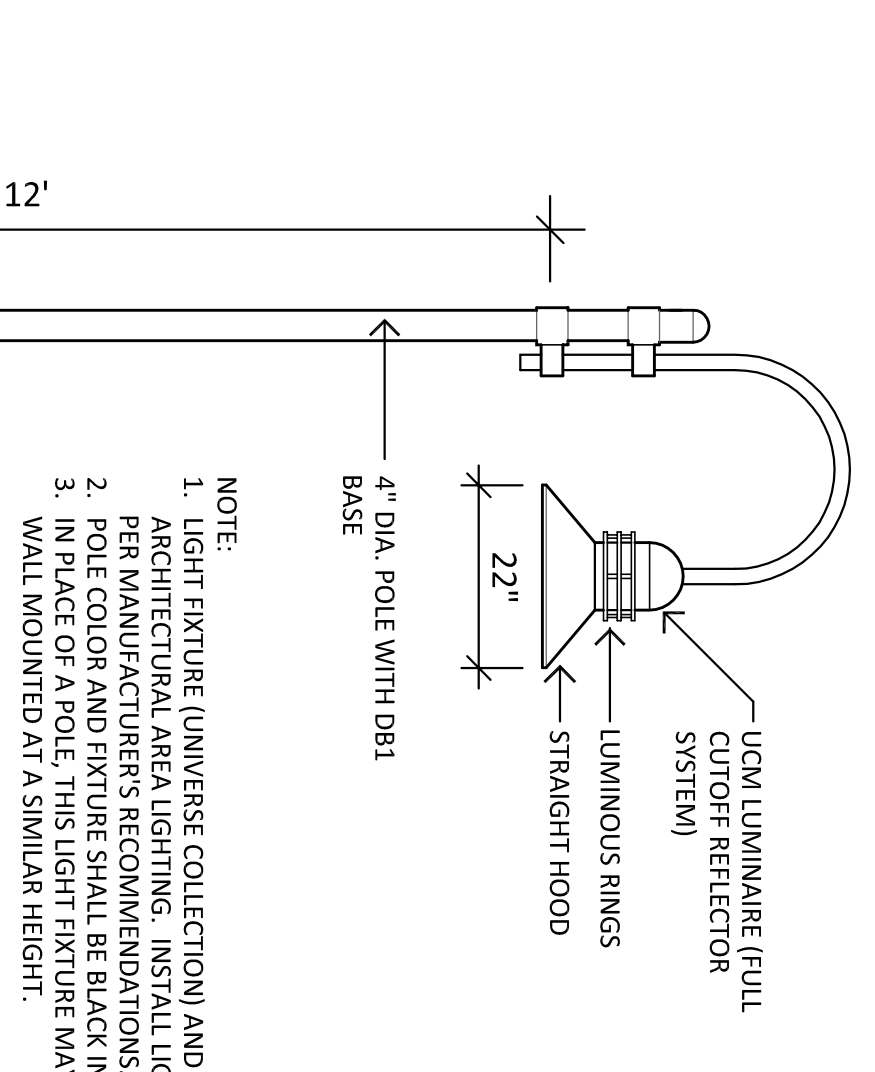
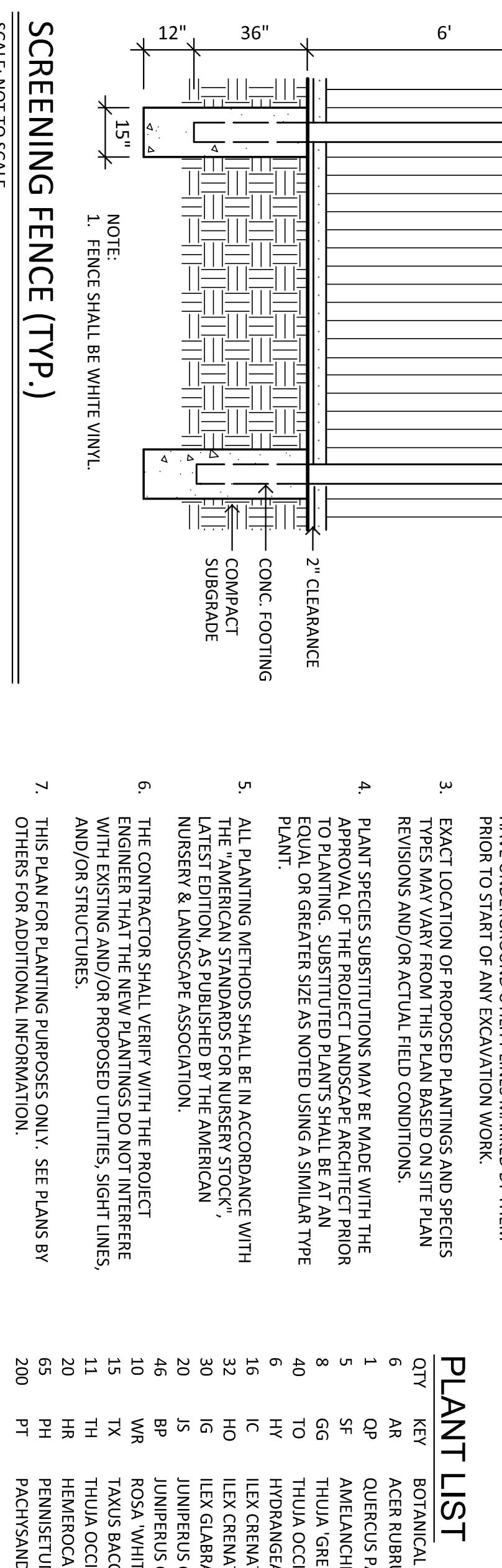
ENVIRONMENTAL ARCHITECTURE & PLANNING
ELC

LANDSCAPE PLAN
PROJECT: 819 EAST MAIN STREET STAMFORD, CONNECTICUT
SCALE: DATE: 4.23.21
SCALE: AS SHOWN
DRAWING NO: LP.1

PLAN



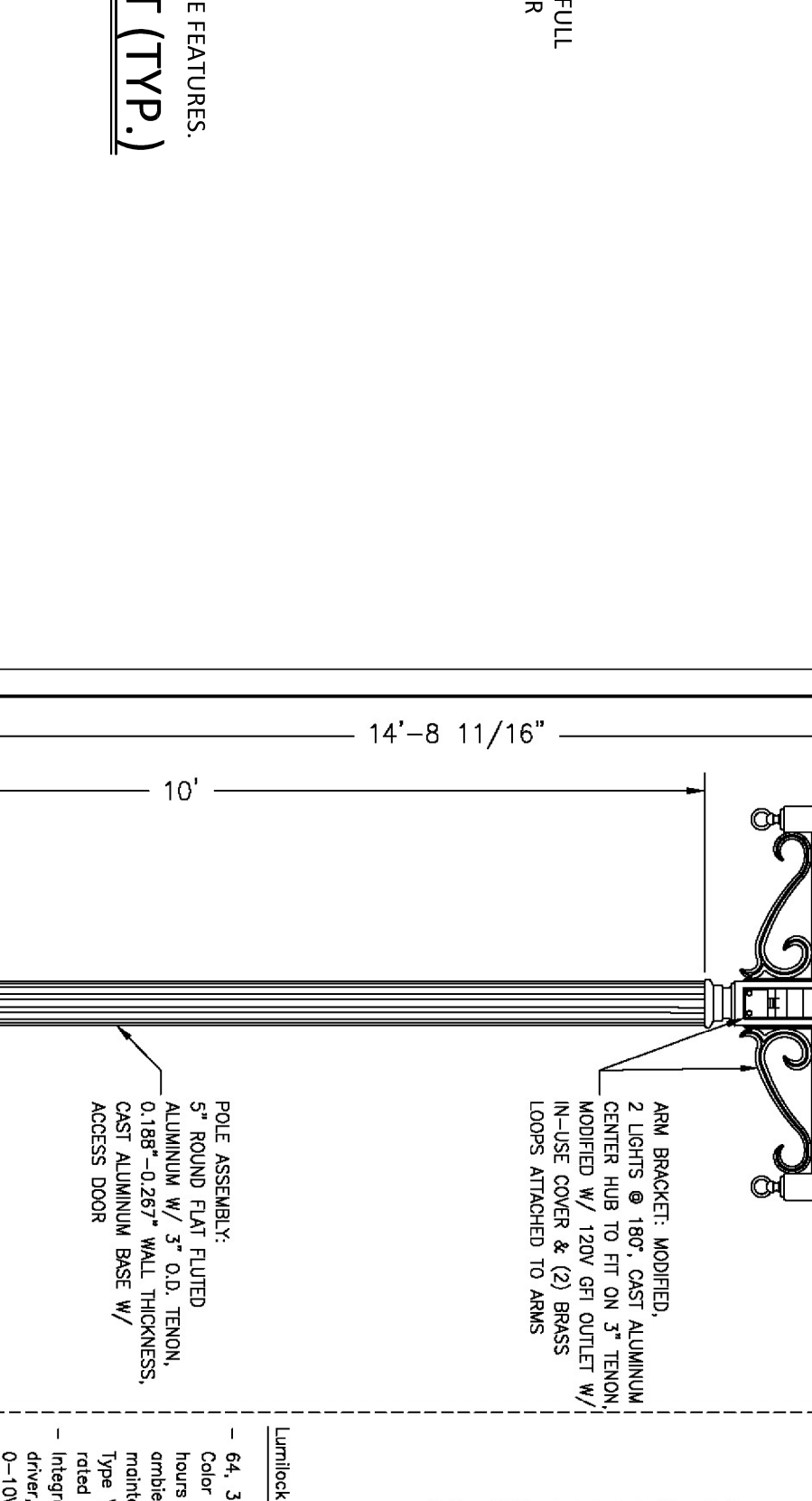
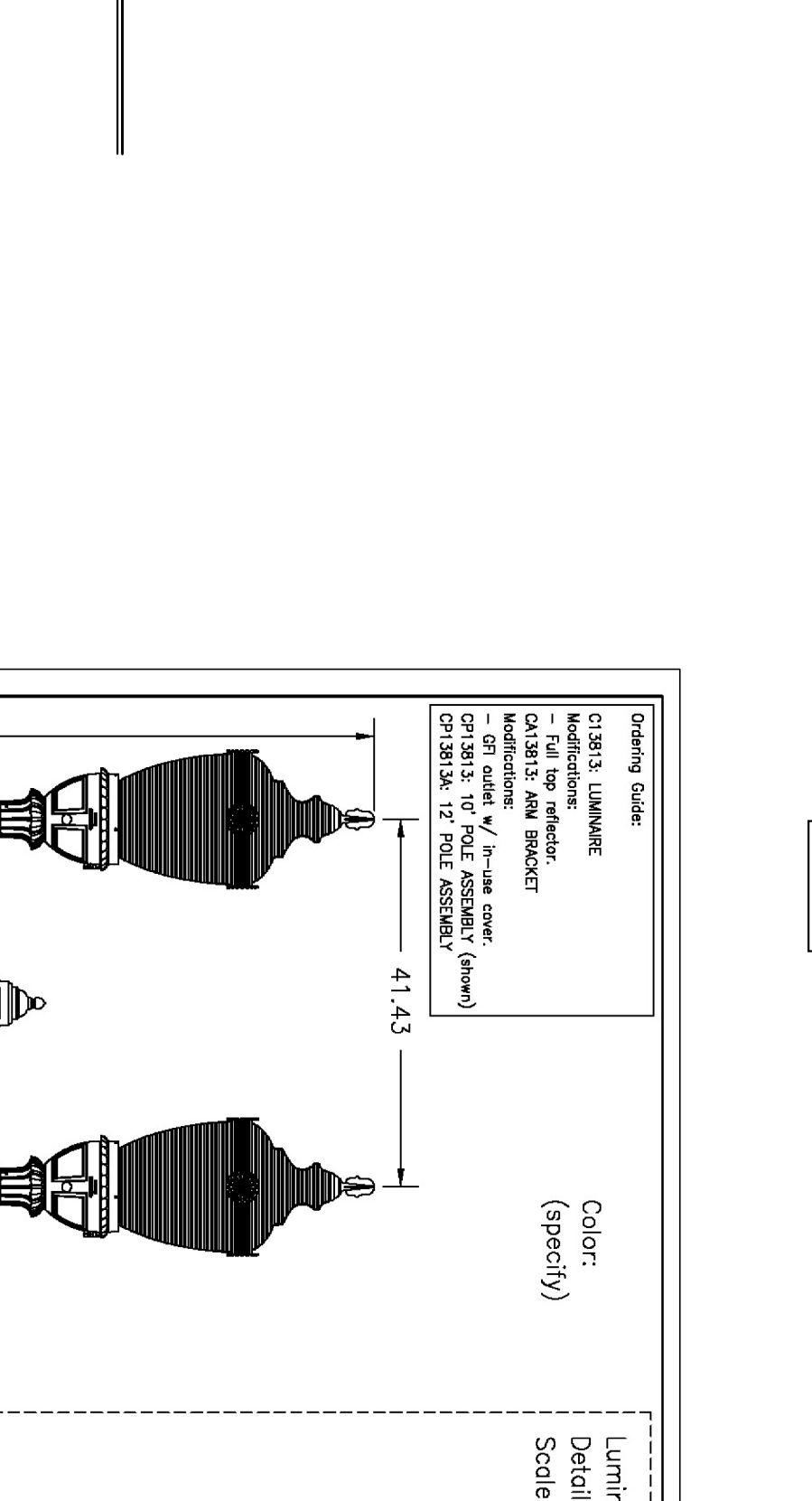
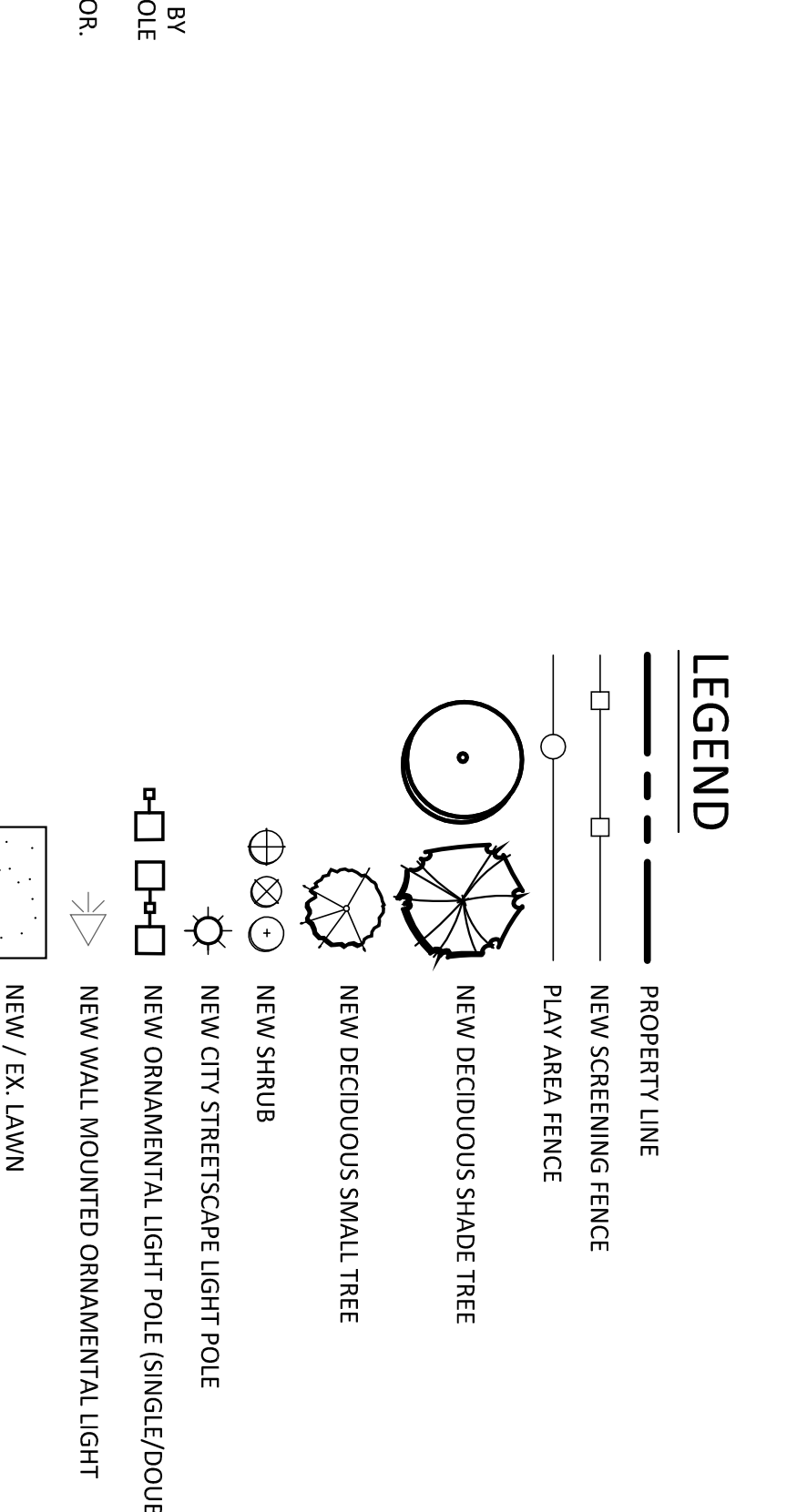
- ## GENERAL NOTES:
- EXISTING AND PROPOSED SITE INFORMATION TAKEN FROM A DIGITAL AUTOCADD SITE PLAN SUPPLIED BY REDNUS & MEAD, ENTITLED "SITE DEVELOPMENT PLAN", DATED 11/21/14.
 - CONTRACTOR SHALL BE RESPONSIBLE FOR OBTAINING ALL NECESSARY PERMITS PRIOR TO START OF ANY EXCAVATION WORK.
 - EXACT LOCATION OF PROPOSED PLANTINGS AND SPECIES SHALL BE INDICATED BY PLANTING SYMBOLS AND PLANT TAGS AND FIELD REVISIONS AND/OR ACTUAL FIELD CONDITIONS.
 - PLANT SPECIES SUBSTITUTIONS MAY BE MADE WITH THE APPROVAL OF THE PROJECT LANDSCAPE ARCHITECT PRIOR TO PLANTING. SUBSTITUTED PLANTS SHALL BE AT AN EQUAL OR GREATER SIZE AS NOTED USING A SIMILAR TYPE PLAN.
 - ALL PLANTING METHODS SHALL BE IN ACCORDANCE WITH THE LATEST EDITION OF THE 'NURSERY STANDARD', PUBLISHED BY THE AMERICAN NURSERY & LANDSCAPE ASSOCIATION.
 - THE CONTRACTOR SHALL VERIFY WITH THE PROJECT ENGINEER THAT THE NEW PLANTINGS DO NOT INTERFERE WITH EXISTING AND/OR PROPOSED UTILITIES, SIGHT LINES, AND/OR STRUCTURES.
 - THIS PLAN FOR PLANTING PURPOSES ONLY. SEE PLANS BY OTHERS FOR ADDITIONAL INFORMATION.



- ## LANDSCAPE LIGHTING NOTES:
- SITE LIGHTING INFORMATION AND LIGHTING PLANS PREPARED BY ENVIRONMENTAL LAND SOLUTIONS, LLC ARE DESIGNED FOR GENERAL LANDSCAPE AESTHETIC PURPOSES ONLY. LIGHTING INFORMATION SHOWN ON THIS PLAN SHALL NOT BE USED FOR SECURITY OR SAFETY PURPOSES.
 - LOCATION AND TYPE OF LIGHT FIXTURES ARE TYPICAL AND MAY VARY BASED ON ACTUAL FIELD CONDITIONS, SITE AND ACCESSIBILITY. ELECTRICAL WIRING SHALL BE IN ACCORDANCE WITH THE LATEST EDITION OF THE NATIONAL ELECTRICAL CODE (NEC) AND CONSULTATIONS WITH LIGHTING CONSULTANT AND/OR MANUFACTURER.
 - THIS PLAN ASSUMES THAT THE BUILDING WILL HAVE WALL MOUNTED FIXTURES (BY OTHERS) TO LIGHT THE FACADE AND ADJACENT LANDSCAPE AREAS (INCLUDING WALKS AND DOORS).
 - INSTALL LIGHT FIXTURES AS RECOMMENDED BY THE MANUFACTURER.

PLANT LIST

QTY	KEY	BOTANICAL NAME	COMMON NAME	SIZE	ROOT	NOTE
AR	AR	ACER RUBRUM 'ARMSTRONG'	ARMSTRONG RED MAPLE	2 1/2'-3" CAL.	B&B	14-15' HT. @ PLANTING, 50' MATURE HT.
1	QP	QUERCUS PALUSTRIS 'SPACIFIC BRILLIANCE'	SPRING FURRY SHAD	2 1/2'-3" CAL.	B&B	14-15' HT. @ PLANTING, 60' MATURE HT.
5	SP	AMELANCHIER LAEVIS 'SPRING FLURRY'	SPRING FURRY SHAD	2-2 1/2' CAL.	B&B	12-13' HT. @ PLANTING, 20' MATURE HT.
8	GG	THUJA GREEN GIANT	GREEN GIANT ARBORVITAE	5-6' HT.	B&B	5-6' HT. @ PLANTING, 25' MATURE HT.
40	TO	THUJA OCCIDENTALIS 'NIGRA'	THE ORIGINAL HYDRANGEA	2-3' HT.	B&B	6-7' HT. @ PLANTING, 25' MATURE HT.
6	HY	HYDRANGEA 'THE ORIGINAL'	CHESSPAK HOLLY	2-3' HT.	B&B	3-4' HT.
16	IC	ILEX CRENATA 'CHESSPAK'	HOOGENDOORN HOLLY	2-3' HT.	B&B	2-3' HT.
32	HO	ILEX GLABRA 'HOOGENDOORN'	COMPACT INKBERY	2-3' HT.	CONT.	2-3' HT.
30	IG	IUNIPERUS CHINENSIS VAR. 'SARGENTI'	BLUE PACIFIC JUNIPER	2-3' 9PR.	CONT.	2-3' 9PR.
20	J5	JUNIPERUS CHINENSIS VAR. 'SARGENTI'	BLUE PACIFIC JUNIPER	2-3' 9PR.	CONT.	2-3' 9PR.
46	BP	ROSA 'WHITE MEUNDLAND'	WHITE MEUNDLAND ROSE	2-3' HT.	CONT.	2-3' HT.
10	WR	TAXUS BACATA 'REPARANS'	REPARANS ENGLISH YEW	2-3' HT.	CONT.	2-3' HT.
15	TH	THUJA OCCIDENTALIS 'HOLMSTRUP'	HOLMSTRUP ARBORVITAE	2-3' HT.	B&B	2-3' HT.
11	TR	HEMICALICUS 'HAPPY RETURNS'	HAPPY RETURNS DAVILIAE	30-36" HT.	B&B	30-36" HT.
65	PH	PENISTEMON ALOPECUROIDES 'HAMMEL'	DWARF FOXTAIL HAMMEL GRASS	1 QT.	B&B	1 QT.
200	PH	PACHYSAANDA TERMINALIS	PACHYSAANDA	BR	B&B	BR



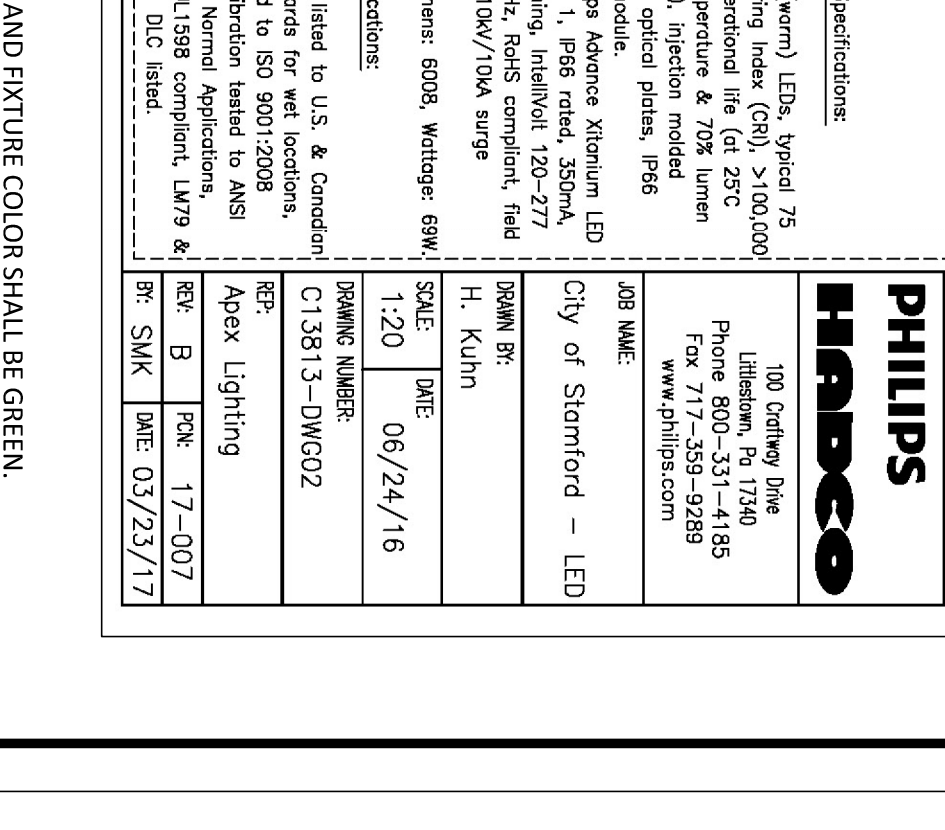
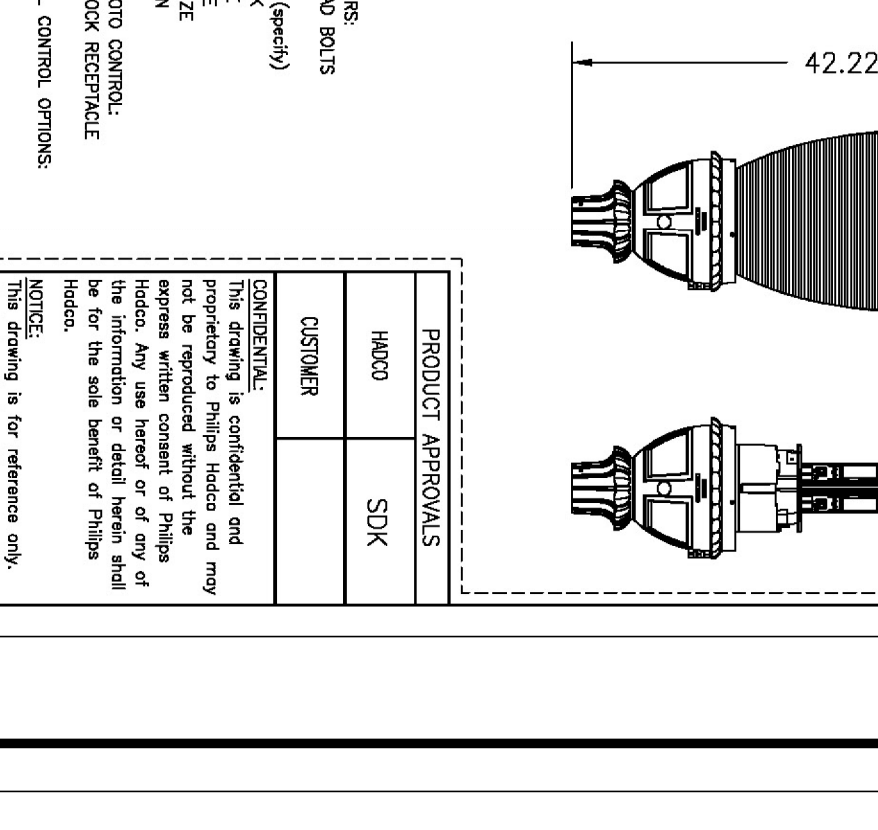
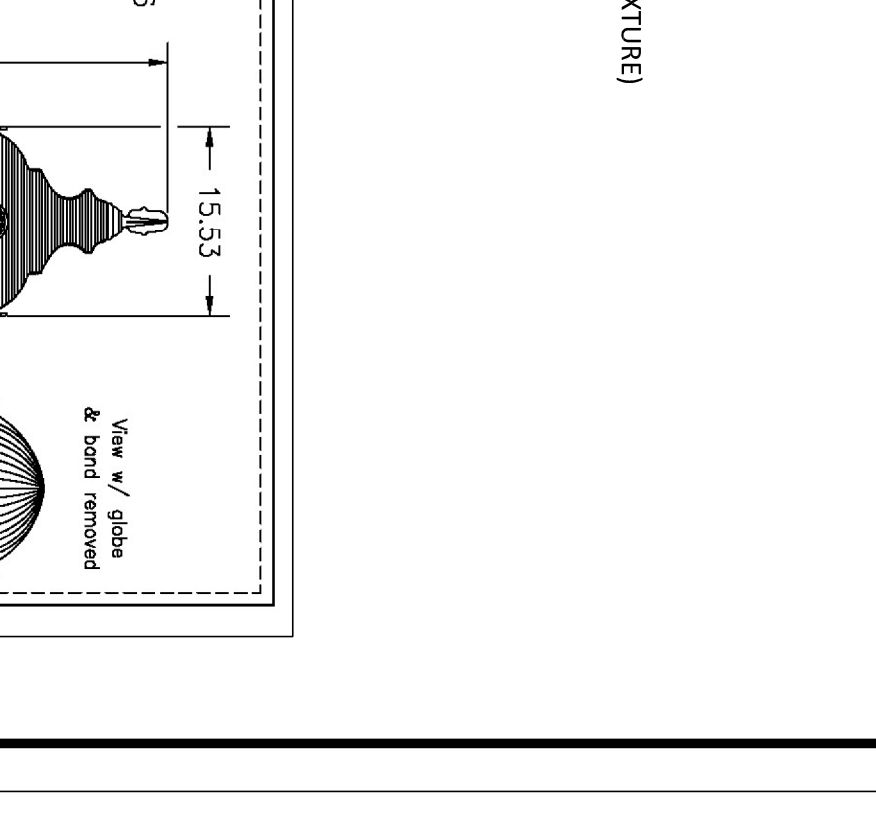
- ## LANDSCAPE LIGHTING NOTES:
- SITE LIGHTING INFORMATION AND LIGHTING PLANS PREPARED BY ENVIRONMENTAL LAND SOLUTIONS, LLC ARE DESIGNED FOR GENERAL LANDSCAPE AESTHETIC PURPOSES ONLY. LIGHTING INFORMATION SHOWN ON THIS PLAN SHALL NOT BE USED FOR SECURITY OR SAFETY PURPOSES.
 - LOCATION AND TYPE OF LIGHT FIXTURES ARE TYPICAL AND MAY VARY BASED ON ACTUAL FIELD CONDITIONS, SITE AND ACCESSIBILITY. ELECTRICAL WIRING SHALL BE IN ACCORDANCE WITH THE LATEST EDITION OF THE NATIONAL ELECTRICAL CODE (NEC) AND CONSULTATIONS WITH LIGHTING CONSULTANT AND/OR MANUFACTURER.
 - THIS PLAN ASSUMES THAT THE BUILDING WILL HAVE WALL MOUNTED FIXTURES (BY OTHERS) TO LIGHT THE FACADE AND ADJACENT LANDSCAPE AREAS (INCLUDING WALKS AND DOORS).
 - INSTALL LIGHT FIXTURES AS RECOMMENDED BY THE MANUFACTURER.

PLANT LIST

QTY	KEY	BOTANICAL NAME	COMMON NAME	SIZE	ROOT	NOTE
AR	AR	ACER RUBRUM 'ARMSTRONG'	ARMSTRONG RED MAPLE	2 1/2'-3" CAL.	B&B	14-15' HT. @ PLANTING, 50' MATURE HT.
1	QP	QUERCUS PALUSTRIS 'SPACIFIC BRILLIANCE'	SPRING FURRY SHAD	2 1/2'-3" CAL.	B&B	14-15' HT. @ PLANTING, 60' MATURE HT.
5	SP	AMELANCHIER LAEVIS 'SPRING FLURRY'	SPRING FURRY SHAD	2-2 1/2' CAL.	B&B	12-13' HT. @ PLANTING, 20' MATURE HT.
8	GG	THUJA GREEN GIANT	GREEN GIANT ARBORVITAE	5-6' HT.	B&B	5-6' HT. @ PLANTING, 25' MATURE HT.
40	TO	THUJA OCCIDENTALIS 'NIGRA'	THE ORIGINAL HYDRANGEA	2-3' HT.	B&B	6-7' HT. @ PLANTING, 25' MATURE HT.
6	HY	HYDRANGEA 'THE ORIGINAL'	CHESSPAK HOLLY	2-3' HT.	B&B	3-4' HT.
16	IC	ILEX CRENATA 'CHESSPAK'	HOOGENDOORN HOLLY	2-3' HT.	B&B	2-3' HT.
32	HO	ILEX GLABRA 'HOOGENDOORN'	COMPACT INKBERY	2-3' HT.	CONT.	2-3' HT.
30	IG	IUNIPERUS CHINENSIS VAR. 'SARGENTI'	BLUE PACIFIC JUNIPER	2-3' 9PR.	CONT.	2-3' 9PR.
20	J5	JUNIPERUS CHINENSIS VAR. 'SARGENTI'	BLUE PACIFIC JUNIPER	2-3' 9PR.	CONT.	2-3' 9PR.
46	BP	ROSA 'WHITE MEUNDLAND'	WHITE MEUNDLAND ROSE	2-3' HT.	CONT.	2-3' HT.
10	WR	TAXUS BACATA 'REPARANS'	REPARANS ENGLISH YEW	2-3' HT.	CONT.	2-3' HT.
15	TH	THUJA OCCIDENTALIS 'HOLMSTRUP'	HOLMSTRUP ARBORVITAE	2-3' HT.	B&B	2-3' HT.
11	TR	HEMICALICUS 'HAPPY RETURNS'	HAPPY RETURNS DAVILIAE	30-36" HT.	B&B	30-36" HT.
65	PH	PENISTEMON ALOPECUROIDES 'HAMMEL'	DWARF FOXTAIL HAMMEL GRASS	1 QT.	B&B	1 QT.
200	PH	PACHYSAANDA TERMINALIS	PACHYSAANDA	BR	B&B	BR

LEGEND

- PROPERTY LINE
- NEW SCREENING FENCE
- PLAY AREA FENCE
- NEW DECIDUOUS SHADE TREE
- NEW DECIDUOUS SMALL TREE
- NEW SHRUB
- NEW CITY STREETSCAPE LIGHT POLE
- NEW ORNAMENTAL LIGHT POLE (SINGLE/DOUBLE FIXTURE)
- NEW WALL MOUNTED ORNAMENTAL LIGHT
- NEW / EX. LAWN



- ## LANDSCAPE LIGHTING NOTES:
- SITE LIGHTING INFORMATION AND LIGHTING PLANS PREPARED BY ENVIRONMENTAL LAND SOLUTIONS, LLC ARE DESIGNED FOR GENERAL LANDSCAPE AESTHETIC PURPOSES ONLY. LIGHTING INFORMATION SHOWN ON THIS PLAN SHALL NOT BE USED FOR SECURITY OR SAFETY PURPOSES.
 - LOCATION AND TYPE OF LIGHT FIXTURES ARE TYPICAL AND MAY VARY BASED ON ACTUAL FIELD CONDITIONS, SITE AND ACCESSIBILITY. ELECTRICAL WIRING SHALL BE IN ACCORDANCE WITH THE LATEST EDITION OF THE NATIONAL ELECTRICAL CODE (NEC) AND CONSULTATIONS WITH LIGHTING CONSULTANT AND/OR MANUFACTURER.
 - THIS PLAN ASSUMES THAT THE BUILDING WILL HAVE WALL MOUNTED FIXTURES (BY OTHERS) TO LIGHT THE FACADE AND ADJACENT LANDSCAPE AREAS (INCLUDING WALKS AND DOORS).
 - INSTALL LIGHT FIXTURES AS RECOMMENDED BY THE MANUFACTURER.

REVISIONS

NO.	DESCRIPTION
1	ADD PLANTING HEIGHTS IN PLANT LIST
2	REVISED PARKING LAYOUT

ENVIRONMENTAL LAND SOLUTIONS, LLC

8 KNIGHT STREET SUITE 203
NORWALK, CONNECTICUT 06851

Tel: (203) 855-7879 Fax: (203) 855-7836
info@elcslc.net www.elcslc.net

DRIVING TITLE: LANDSCAPE PLAN

PROJECT: 819 EAST MAIN STREET STAMFORD, CONNECTICUT

SCALE: AS SHOWN

DATE: 4.23.21

DRAWING NO.: LP.1