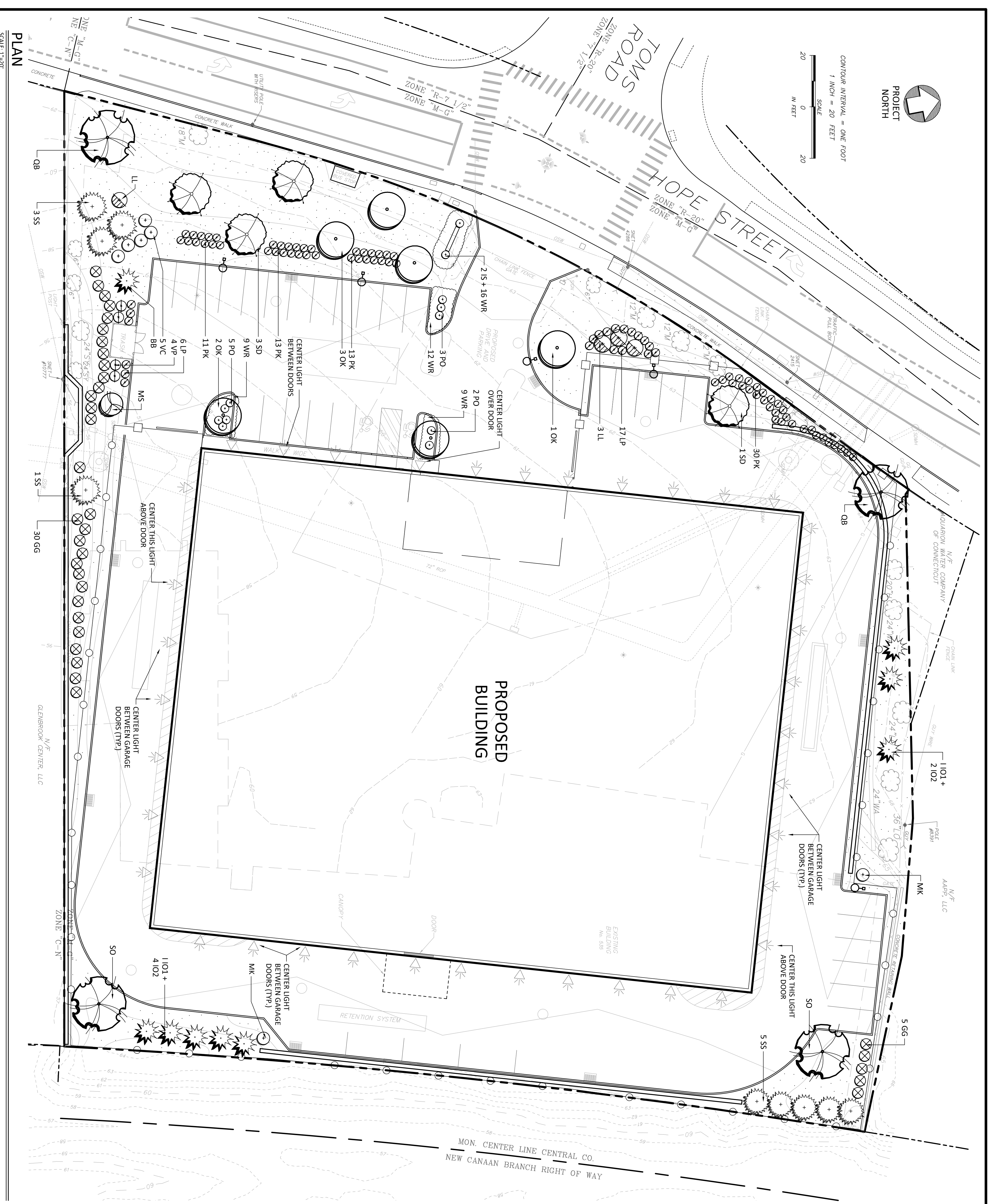


CANTOUR INTERVAL = ONE FOOT  
1 INCH = 20 FEET  
SCALE

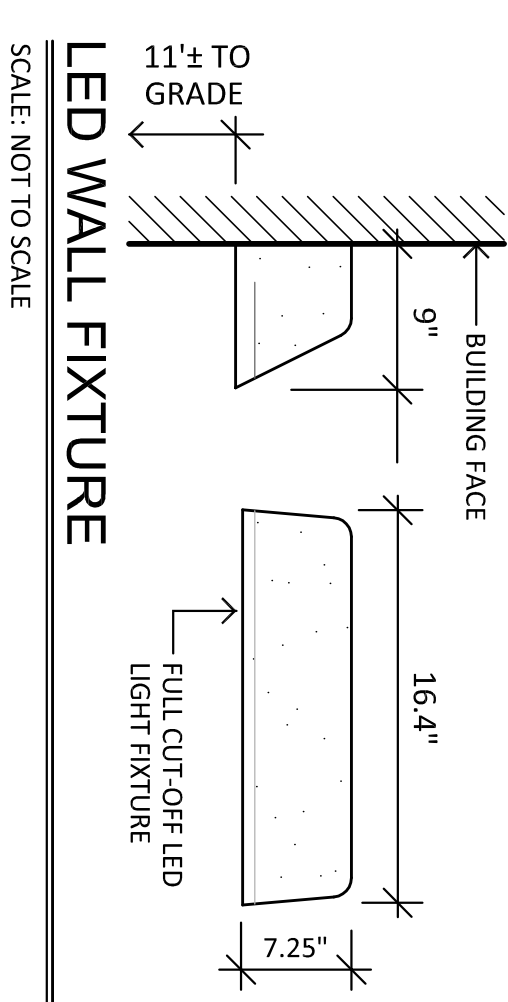


**GENERAL NOTES:**

- EXISTING AND PROPOSED SITE INFORMATION TAKEN FROM A DIGITAL AUTOCAD SITE PLAN SUPPLIED BY RICCIO V. BANDERA, INC.
- EXACT LOCATION OF PROPOSED PLANTINGS AND SPECIES TYPES MAY VARY FROM THIS PLAN BASED ON SITE PLAN REVISIONS AND/OR ACTUAL FIELD CONDITIONS.
- PLANT SPECIES SUBSTITUTIONS MAY BE MADE WITH THE APPROVAL OF THE PROJECT LANDSCAPE ARCHITECT PRIOR TO PLANTING. SUBSTITUTED PLANTS SHALL BE AT AN EQUAL OR GREATER SIZE AS NOTED USING A SIMILAR TYPE PLANT.
- PLANTING METHODS SHALL BE IN ACCORDANCE WITH THE AMERICAN STANDARDS FOR NURSERY STOCK, LATEST EDITION, AS PUBLISHED BY THE AMERICAN NURSERY & LANDSCAPE ASSOCIATION.

**LANDSCAPE LIGHTING NOTES:**

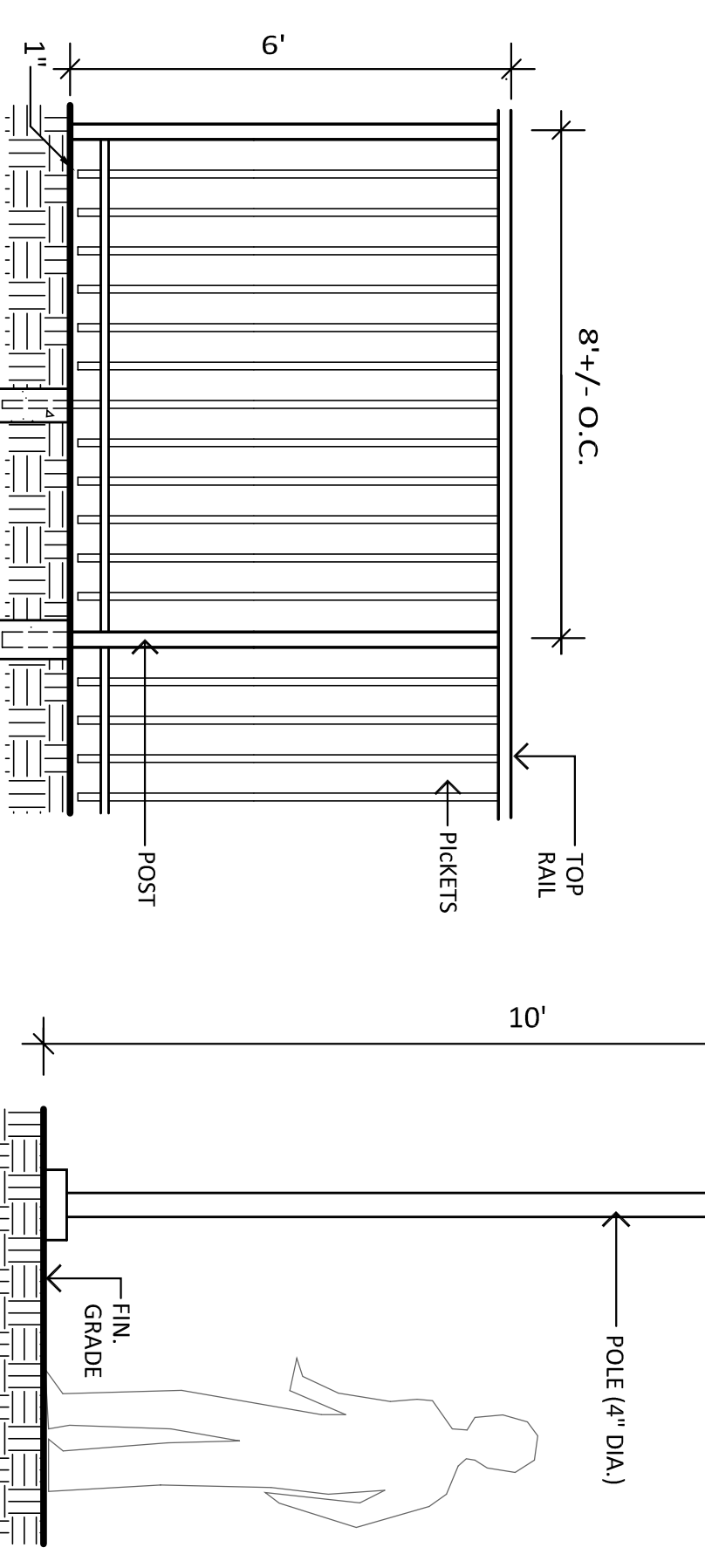
- LIGHTING INFORMATION AND LIGHTING PLANS PREPARED BY ENVIRONMENTAL LAND SOLUTIONS, INC. DESIGNED FOR GENERAL USE. LIGHTING INFORMATION SHOWN ON THIS PLAN SHALL NOT BE USED FOR SECURITY OR SAFETY PURPOSES.
- LOCATION AND TYPE OF LIGHT FIXTURES ARE TYPICAL AND MAY VARY BASED ON ACTUAL FIELD CONDITIONS, SITE AND ARCHITECTURAL PLAN REVISIONS, USE OF EXISTING LIGHTING (IF ANY), NEW BUILDING MOUNTED LIGHTING, AESTHETICS, AND CONSULTATIONS WITH LIGHTING CONSULTANT AND/OR MANUFACTURER.
- THIS PLAN ASSUMES THAT THE BUILDING WILL HAVE WALL MOUNTED FIXTURES (BY OTHERS) TO LIGHT THE FACADE AND ADJACENT LANDSCAPE AREAS (INCLUDING WALKS AND DOORS).



- NOTE:
- LIGHT FIXTURE (GARROCCO LED WALL SCENE 1011) BY PHILIPS. INSTALL LIGHT FIXTURE PER MANUFACTURER'S RECOMMENDATIONS. LED COLOR SHALL BE 4000K.
  - BUILDING COLOR.
  - ALIGN FIXTURE LOCATIONS WITH BUILDING ARCHITECTURE.

**LEGEND**

- PROPERTY LINE
- NEW ALUMINUM FENCE
- NEW CHAIN LINK FENCE
- NEW / EX. LAWN AREA
- LED WALL FIXTURE
- NEW LIGHT POLE
- NEW SMALL FLOWERING TREE
- NEW EVERGREEN TREE
- NEW SHRUB
- NEW SHADE TREE
- ECOFORM LED FIXTURE BY PHILIPS, 3000K



**ALUMINUM PICKET RAILING (TYP.)**

SCALE: NOT TO SCALE

**LIGHT POLE**

N.T.S.

**CHAIN LINK FENCE (TYP.)**

NOTE: CHAIN LINK FABRIC AND POSTS TO BE BLACK VINYL COATED (ALL SURFACES).

SCALE: NOT TO SCALE

**PLANT LIST**

QTY	KEY	BOTANICAL NAME	COMMON NAME	SIZE	ROOT	REMARKS
2	QB	QUERCUS BICOLOR	SWAMP WHITE OAK	2 1/2" CAL.	BBB	FULL
2	SO	QUERCUS IBERICANA	SHINGO OAK	2-2 1/2" CAL.	BBB	FULL
1	BB	MAGNOLIA GRANDIFLORA	BRACKEN'S BEAUTY	6-7 HT.	BBB	FULL
1	MS	MAGNOLIA STELLATA CENTENNIAL	STAR MAGNOLIA	4-5 HT.	BBB	FULL
4	SD	MALUS SNOWDRIFT	SNOWDRIFT CRABAPPLE	2-2 1/2" CAL.	BBB	WATCHING
6	OK	PRUNUS OKAME	OKAME CHERRY	2-2 1/2" CAL.	BBB	MALE
2	IO1	ILEX OPACA 'JERSEY KNIGHT'	JERSEY KNIGHT HOLLY	4-5 HT.	BBB	FEMALE
6	IO2	ILEX OPACA 'JERSEY PRINCESS'	JERSEY PRINCESS HOLLY	4-5 HT.	BBB	FEMALE
1	MG	MAGNOLIA SOULANGIANA 'BROZZONI'	BROZZONI SAUCER MAGNOLIA	6-7 HT.	BBB	FULL
9	PECA	OMORHA	SEBASTIAN SPRUCE	7-8 HT.	BBB	FULL
35	GG	THUJA GREEN GIANT	HYDRANGEA PANICULATA 'LIME LIGHT'	5-6 HT.	BBB	FULL
4	LS	HYDRANGEA PANICULATA 'LIME LIGHT'	HYDRANGEA PANICULATA 'LIME LIGHT'	5-6 HT.	BBB	FULL
2	IS	ILEX CRENATA 'STEEDES'	STEDES HOLY	3-4 HT.	BBB	FULL
10	PO	POTENTILLA 'VATHERINE DWYKS'	KATHERINE DWYKS CINQUEFOIL	3-4 HT.	BBB	FULL
46	WR	ROSA 'WHITE MEIDLAND'	WHITE MEIDLAND ROSE	2-3 HT.	BBB	FULL
67	PK	ROSA 'PINK KNOCKOUT'	PINK KNOCKOUT ROSE	2-3 HT.	BBB	FULL
23	LP	SPRINGE 'LITTLE PRINCESS'	LITTLE PRINCESS SPHERA	2-3 HT.	BBB	FULL
2	WC	SPRINGE 'LITTLE PRINCESS'	LITTLE PRINCESS SPHERA	2-3 HT.	BBB	FULL
5	VC	SPRINGE 'LITTLE PRINCESS'	LITTLE PRINCESS SPHERA	2-3 HT.	BBB	FULL
5	VP	VIBURNUM CARLESI	MAYTOWER VIBURNUM	3-4 HT.	BBB	FULL
4	VP	VIBURNUM PRAGENSE	PRAGUE VIBURNUM	3-4 HT.	BBB	FULL

REGIONS	DRAWING TITLE
1	LANDSCAPE PLAN

PROJECT	DATE
HOPE STREET, LLC 523-535 HOPE STREET STAMFORD, CONNECTICUT	4.15.21

ENVIRONMENTAL LAND SOLUTIONS, LLC  
8 KNIGHT STREET, SUITE 203  
NORWALK, CONNECTICUT 06851

ENVIRONMENTAL ARCHITECTURE AND ENVIRONMENTAL PLANNING  
TEL: (203) 855-8799 FAX: (203) 855-7836  
INFO@ELSLC.NET WWW.ELSLC.NET

SCALE: AS SHOWN  
DRAWING NO.: LP.1