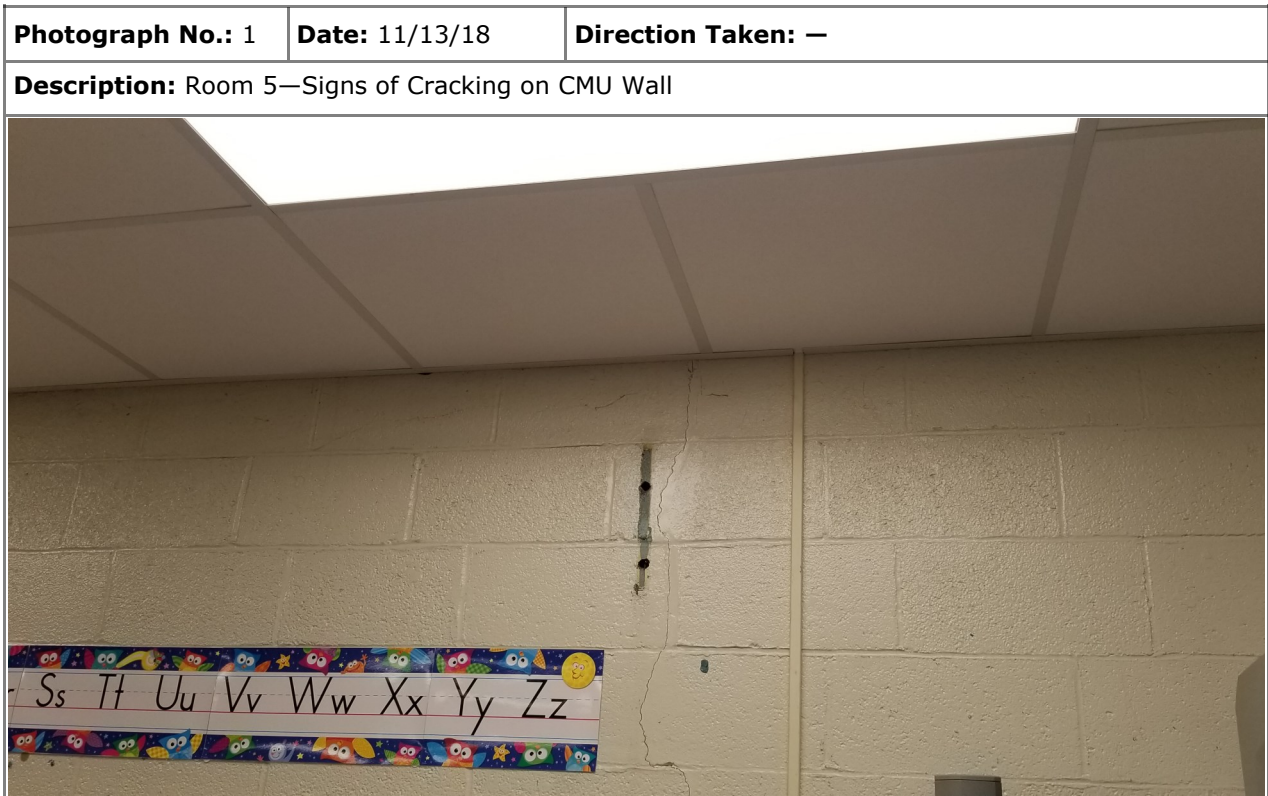


# Initial Assessment—Photographic Log

**Client:** City of Stamford Mold Task Force

**Job Number:** S-2087-033

**Site:** Springdale Elementary School

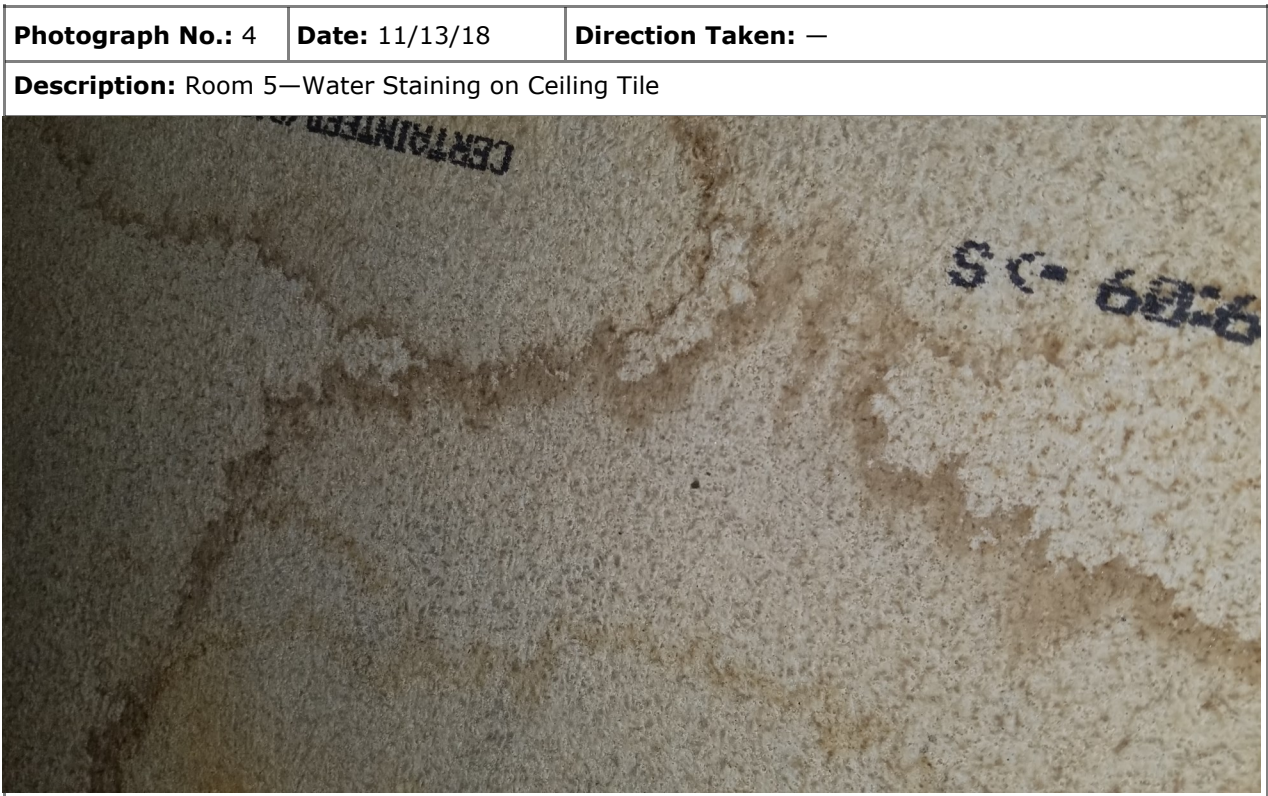


# Initial Assessment—Photographic Log

**Client:** City of Stamford Mold Task Force

**Job Number:** S-2087-033

**Site:** Springdale Elementary School

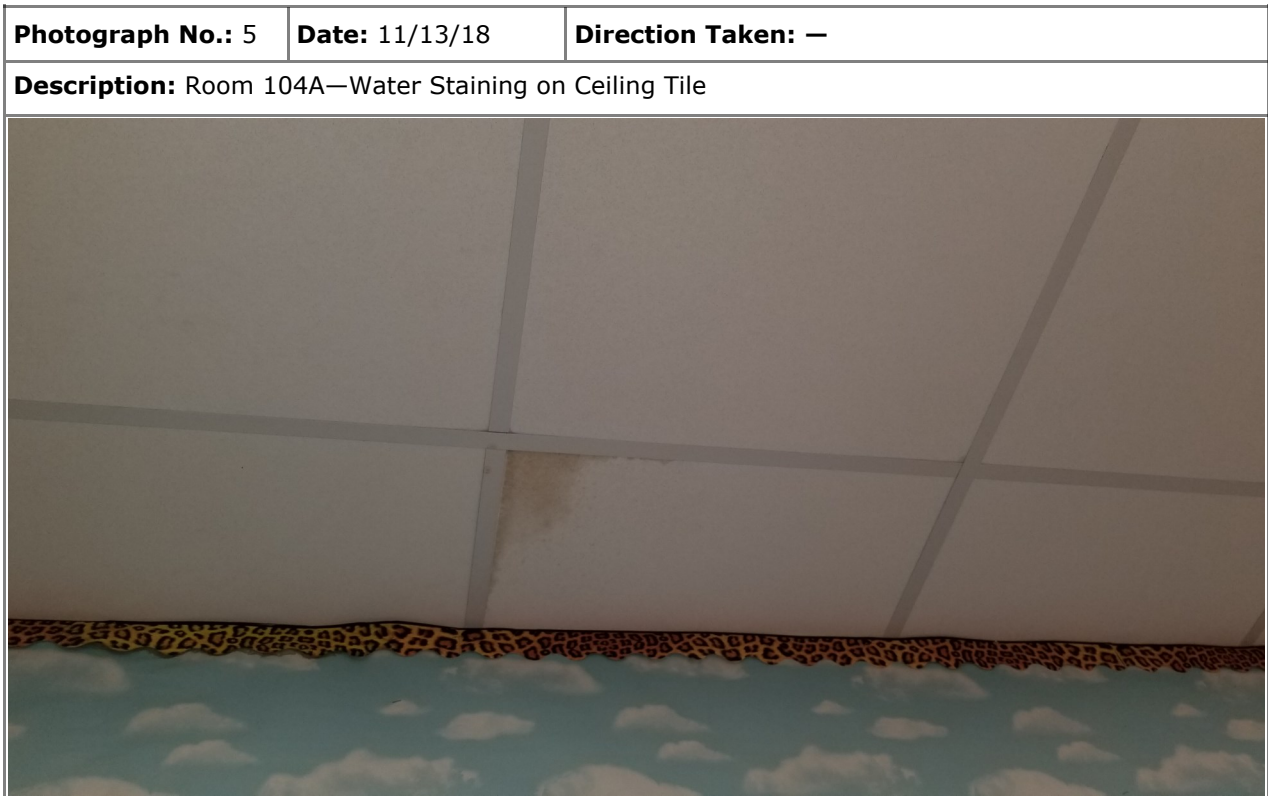


# Initial Assessment—Photographic Log

**Client:** City of Stamford Mold Task Force

**Job Number:** S-2087-033

**Site:** Springdale Elementary School



# Initial Assessment—Photographic Log

**Client:** City of Stamford Mold Task Force

**Job Number:** S-2087-033

**Site:** Springdale Elementary School

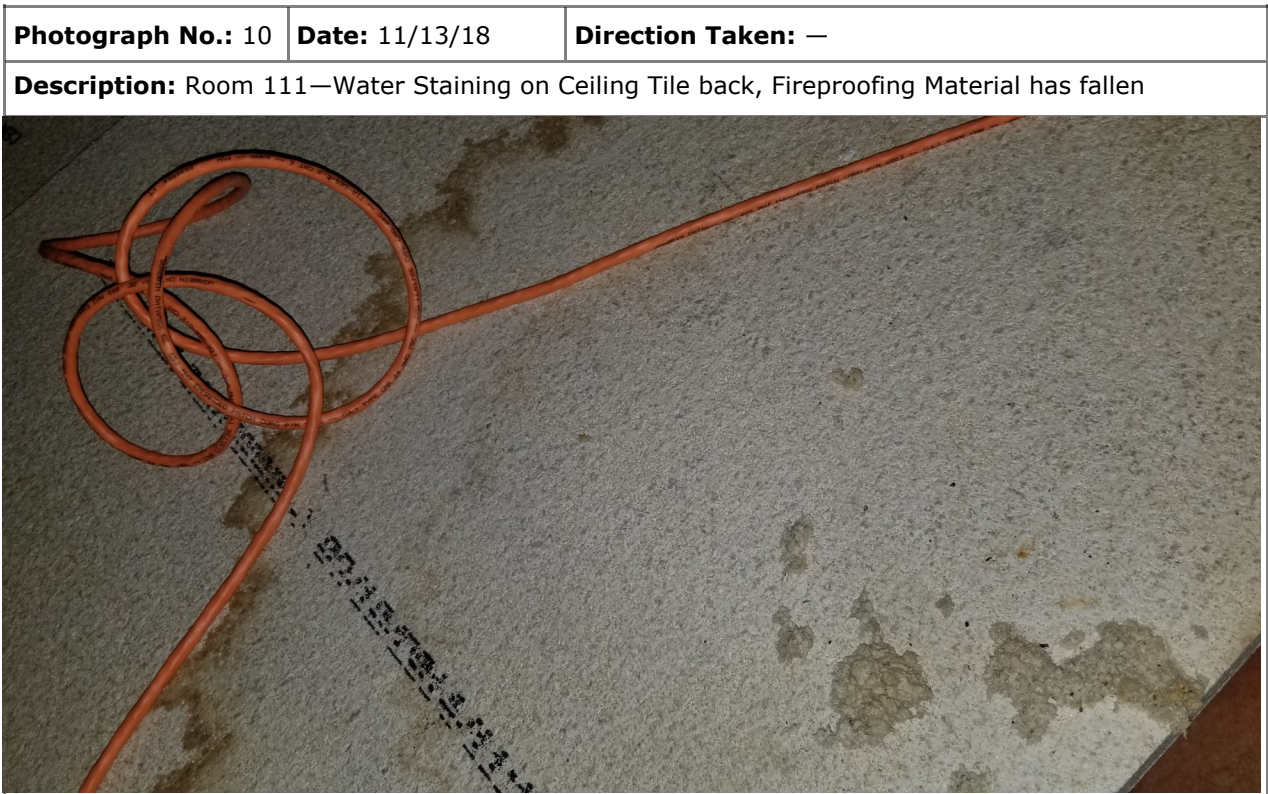


# Initial Assessment—Photographic Log

**Client:** City of Stamford Mold Task Force

**Job Number:** S-2087-033

**Site:** Springdale Elementary School

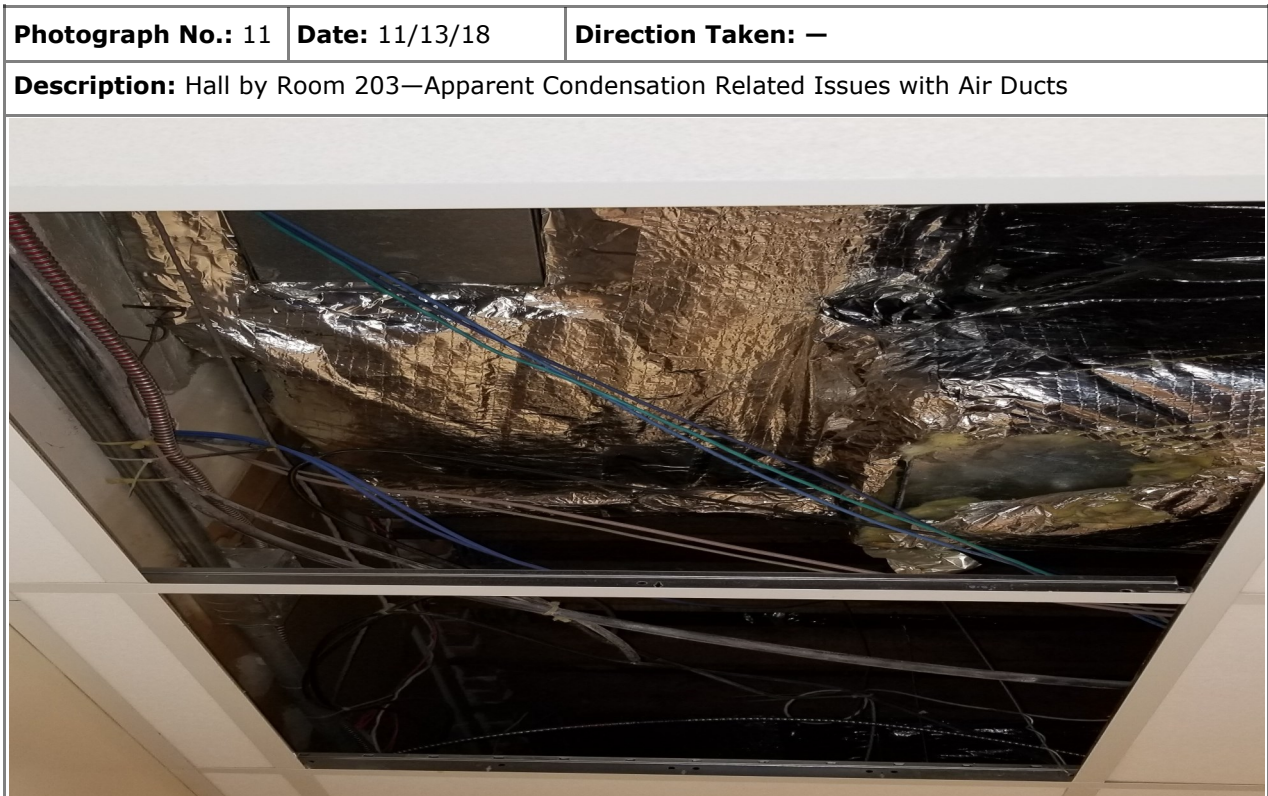


# Initial Assessment—Photographic Log

**Client:** City of Stamford Mold Task Force

**Job Number:** S-2087-033

**Site:** Springdale Elementary School




# Initial Assessment—Photographic Log

**Client:** City of Stamford Mold Task Force

**Job Number:** S-2087-033

**Site:** Springdale Elementary School

<b>Photograph No.:</b> 13	<b>Date:</b> 11/13/18	<b>Direction Taken:</b> —
<b>Description:</b> Hall by Room 203—Mold Growth on Ceiling Tile		
		

<b>Photograph No.:</b> 14	<b>Date:</b> 11/13/18	<b>Direction Taken:</b> —
<b>Description:</b> Hall by Room 203—Gaps in Duct Insulation		
		

# Initial Assessment—Photographic Log

**Client:** City of Stamford Mold Task Force

**Job Number:** S-2087-033

**Site:** Springdale Elementary School

<b>Photograph No.:</b> 15	<b>Date:</b> 11/13/18	<b>Direction Taken:</b> —
<b>Description:</b> Upper Level Hallway—Back of Supply Air Diffuser, Mold Growth		
		

The photograph shows the back of a white supply air diffuser in a hallway. The diffuser is partially covered with a dark, crinkled plastic sheet. There is significant mold growth on the white surface of the diffuser, appearing as dark, fuzzy patches. The surrounding wall is also white and shows some minor staining.

<b>Photograph No.:</b> 16	<b>Date:</b> 11/13/18	<b>Direction Taken:</b> —
<b>Description:</b> Art Storage Room—Gaps in Insulation		
		

The photograph shows the interior of an art storage room. The ceiling is made of white acoustic tiles, and there are several large, white, cylindrical pipes running across it. There are significant gaps and damage in the insulation between the ceiling and the walls, particularly around the pipes. The walls are made of light-colored brick or block. The floor is also visible, showing some debris and a yellow caution tape.