



Historic Preservation
& Improvements

648 & 670 Pacific Street and 171 Henry Street

November 30, 2021

171 Henry Street
Vernacular Cottage
(1885)



1970s photo

Proposed Improvements

1. Improve appearance of porch: Add period style porch posts, railings, lattice. Paint wood members of porch white.



Other porches
along Henry
Street



Existing porch (present day)



Example image of potential porch style

171 Henry Street
Vernacular Cottage
(1885)

Proposed Improvements

2. Add landscaping (low shrubbery) along porch lattice.



Existing porch (present day)

171 Henry Street
Vernacular Cottage
(1885)



Existing front doors

Proposed Improvements

3. Add new matching historic style double front entry doors in compatible color.



Potential front door example

171 Henry Street
Vernacular Cottage
(1885)



Existing Chain Link Fence

Proposed Improvements

4. Replace chain link fence with period style fencing.

Potential fence type



670 Pacific Street
Engine Company No. 2
(aka South End Fire Station)

Proposed Improvements

1. Restore windows to resemble historic configuration:
 - Remove applied window mullions building-wide
 - Apply one intermediate rail to resemble double hung windows

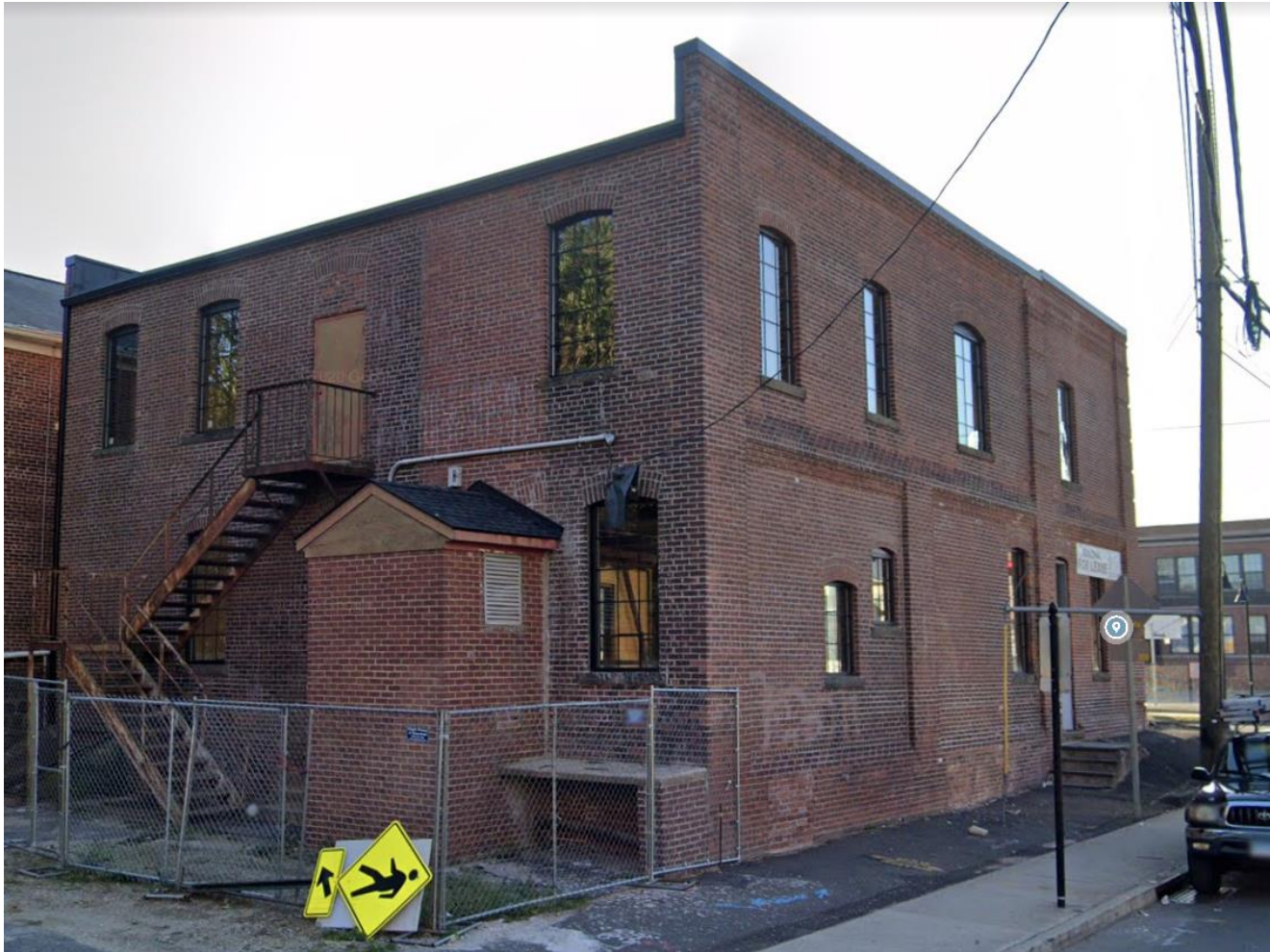


Existing Building
(Henry Street frontage)

670 Pacific Street
Engine Company No. 2
(aka South End Fire Station)

Proposed Improvements

2. Repoint brick, as needed, with similar masonry profile and composition



Existing Building

670 Pacific Street
Engine Company No. 2
(aka South End Fire Station)

Proposed Improvements

3. Make necessary modifications to meet building codes for new use(s) including grading of site and completion of outdoor platform and installing bathrooms.
4. Interior tenant fit-outs, as needed.



Existing building

670 Pacific Street
Engine Company No. 2
(aka South End Fire Station)

Proposed Improvements

5. Make all necessary structural improvements.



Basement photos

670 Pacific Street
Engine Company No. 2
(aka South End Fire Station)



Existing Building

Proposed Improvements

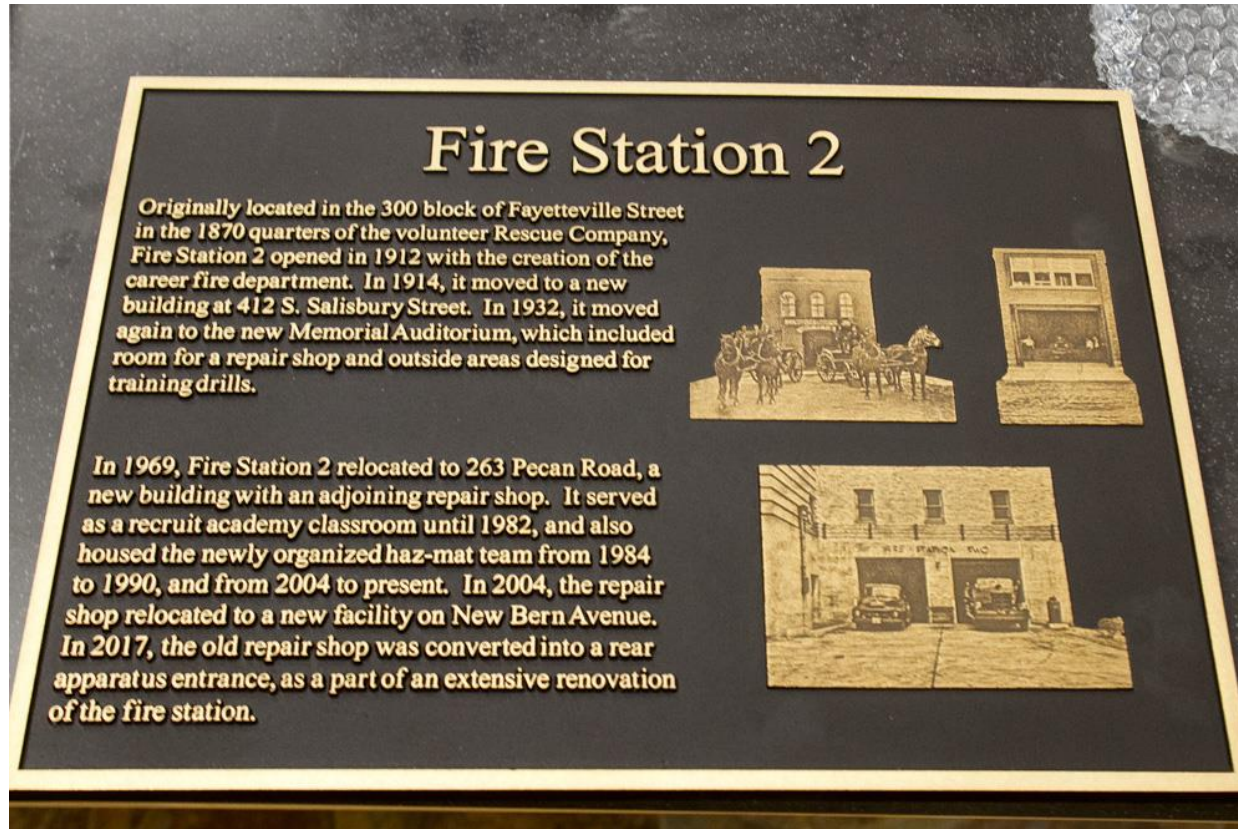
6. Clean keystones, and sills, as needed, with non-abrasive products recommended by the SHPO and approved by the National Park Service.



670 Pacific Street
Engine Company No. 2
(aka South End Fire Station)

Proposed Improvements

7. Add exterior historic interpretive plaque as required in the Preservation Easement



Example Plaque

670 Pacific Street
Engine Company No. 2
(aka South End Fire Station)

Proposed Improvements

8. Create artistic design or applique for required utility equipment
(pursuant to approval by utility company)

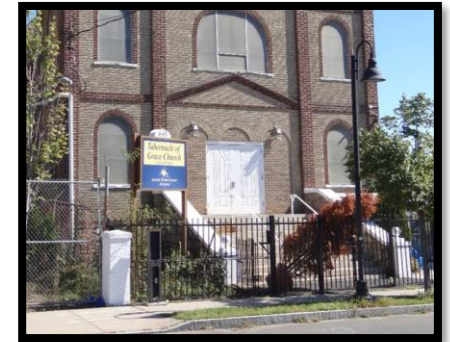
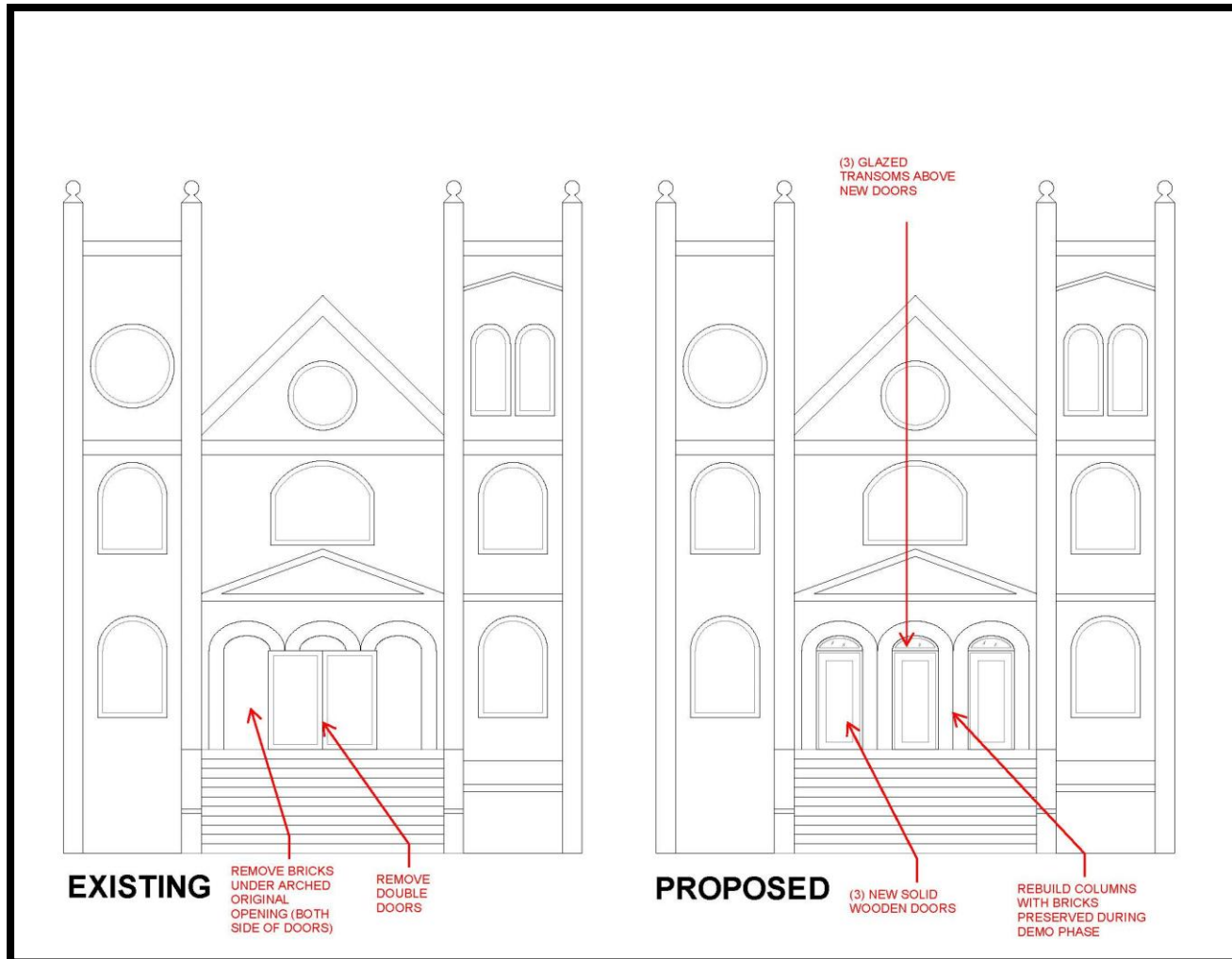
Inspiration Images



648 Pacific Street Annunciation Greek Orthodox Church

Proposed Improvements

1. Replace existing double doors with (3) single Wooden doors (with glass transom) and rebuild brick columns below arches



Existing Building

Proposed Improvements

648 Pacific Street
Annunciation Greek Orthodox Church

2. Remove paint and clean stone sills.



Proposed Improvements

648 Pacific Street
Annunciation Greek Orthodox Church

3. Paint large pvc pipes on façade to match brick color



648 Pacific Street
Annunciation Greek Orthodox Church

Proposed Improvements

4. Paint tower louvers and window trim/frames to match doors.



648 Pacific Street Annunciation Greek Orthodox Church

Proposed Improvements

5. Install compatible period style light fixtures at front entry.



No fixtures on historic building



Existing fixtures

648 Pacific Street
Annunciation Greek Orthodox Church

Proposed Improvements

6. Clean window polycarbonate protection



648 Pacific Street
Annunciation Greek Orthodox Church

Proposed Improvements

7. Paint handrails black.

