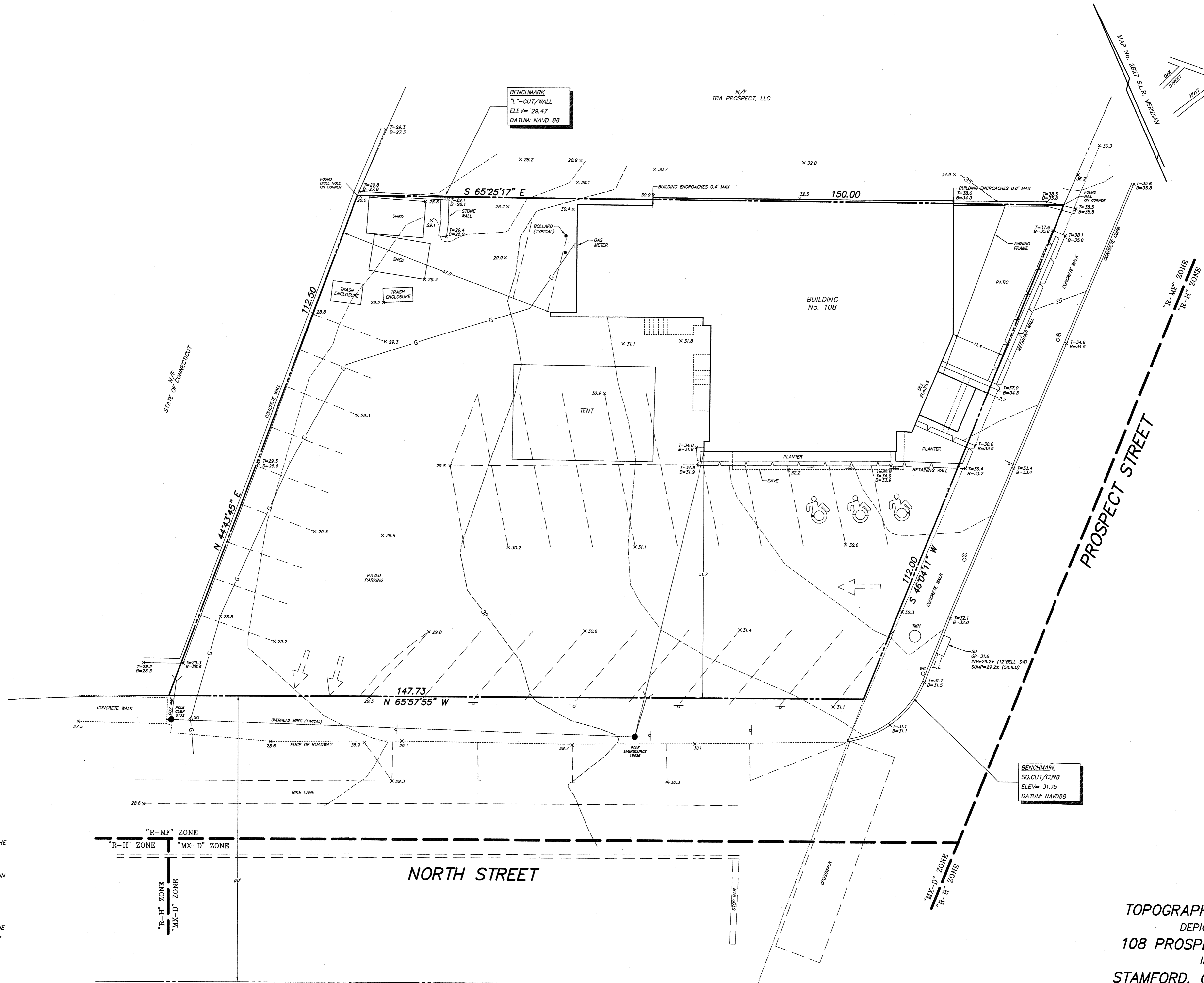


LOCATION MAP - 1" = 600'±



LEGEND:

- - - - - EXISTING CONTOUR
- x 30.2 EXISTING SPOT ELEVATION
- x T=32.5 B=31.0 TOP/BOTTOM OF WALL OR CURB
- - - - - SIGN
- UTILITY POLE
- GG GAS GATE
- WG WATER GATE
- SD STORM DRAIN
- TMH TELEPHONE MANHOLE
- - - - - APPROXIMATE LOCATION OF UNDERGROUND UTILITY SERVICE:  
G=GAS

UNDERGROUND UTILITIES HAVE BEEN PLOTTED FROM AVAILABLE INFORMATION INCLUDING PHYSICAL EVIDENCE AND UTILITY COMPANY SKETCHES. DEPICTED UTILITIES ARE APPROXIMATE AND ARE INCOMPLETE. SURVEY DECLARATION OF ACCURACY DOES NOT EXTEND TO THE PLOTTING OF UNDERGROUND UTILITIES. UNDERGROUND UTILITY LOCATION SHALL BE FIELD VERIFIED AND MARKED PRIOR TO COMMENCING ANY EXCAVATION ACTIVITIES. \*CALL BEFORE YOU DIG, 1-800-922-4455.

CONTOURS AND ELEVATIONS DEPICTED HEREON ARE BASED ON THE NORTH AMERICAN VERTICAL DATUM OF 1988 (NAVD 88).

THIS MAP IS A TOPOGRAPHIC SURVEY. TOPOGRAPHIC DATA IS IN ACCORDANCE WITH CLASS "T-2" TOPOGRAPHIC ACCURACY. BOUNDARY INFORMATION IS BASED ON A RESURVEY CONDUCTED IN ACCORDANCE WITH HORIZONTAL ACCURACY CLASS "A-2" AS DEFINED IN THE REGULATIONS OF CONNECTICUT STATE AGENCIES SECTIONS 20-300b-1 THROUGH SEC. 20-300b-20.

NEW MONUMENTATION HAS NOT BEEN SET IN THE COURSE OF MAKING THIS SURVEY.

ONLY COPIES OF THIS MAP, BEARING AN ORIGINAL IMPRINT OF THE SURVEYOR'S EMBOSSED SEAL SHALL BE CONSIDERED TO BE TRUE, VALID COPIES.

AREA = 15,590 S.F.

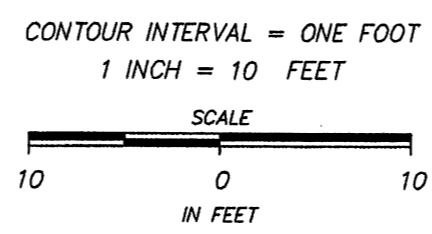
REFER TO VOL. 10035 PAGE 321 S.L.R.

LAND LIES IN "R-MF" ZONING DISTRICT

TO MY KNOWLEDGE AND BELIEF, THIS MAP IS SUBSTANTIALLY CORRECT AS NOTED HEREON.

D'ANDREA SURVEYING & ENGINEERING, P.C.

Edwin W. Rhodes, III, SURVEYOR  
EDWIN W. RHODES, III CT LS No. 70436  
RIVERSIDE, CONNECTICUT



#009-22

TOPOGRAPHIC SURVEY  
DEPICTING  
108 PROSPECT STREET  
IN  
STAMFORD, CONNECTICUT  
PREPARED FOR

108 PROSPECT STREET, LLC