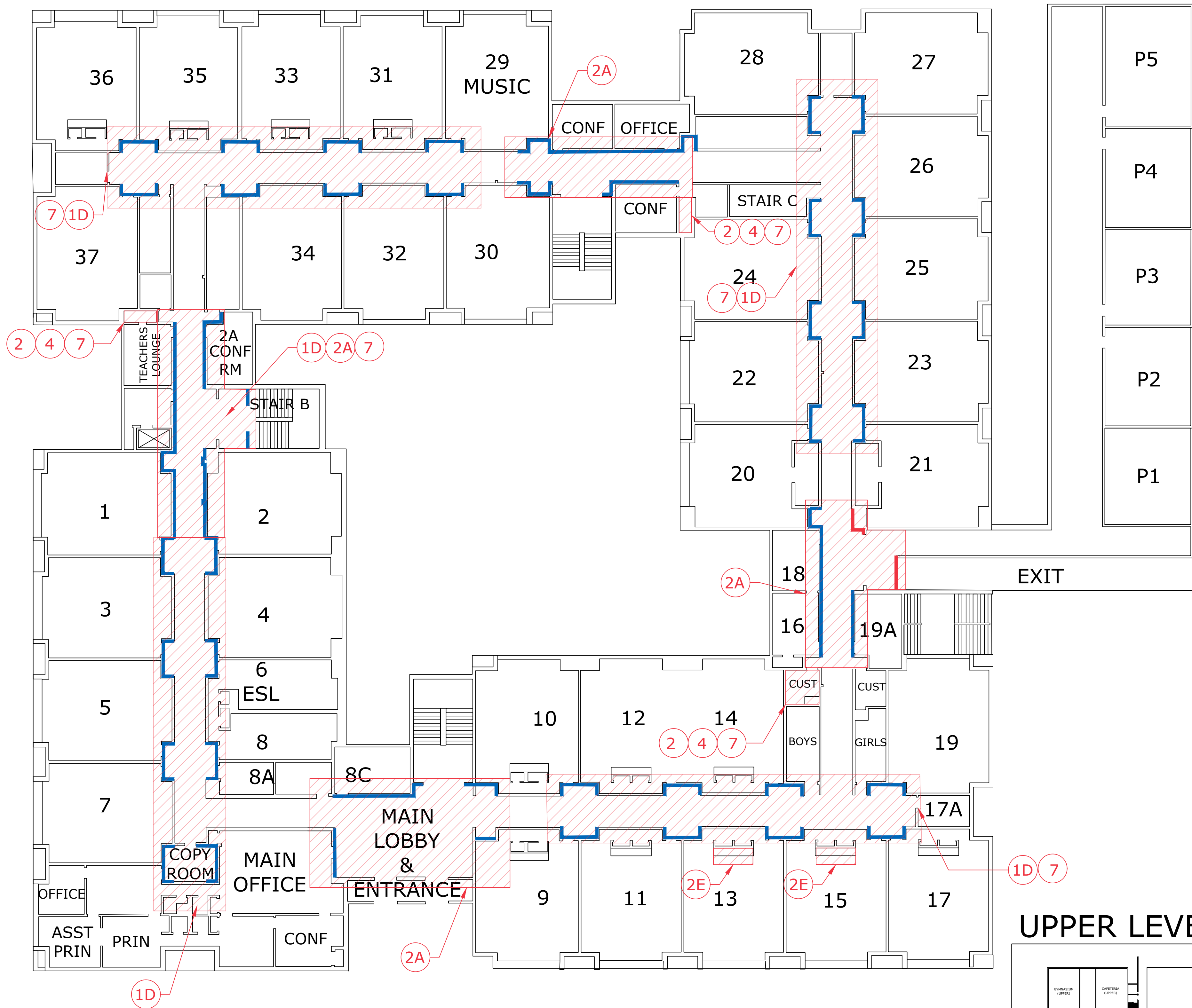
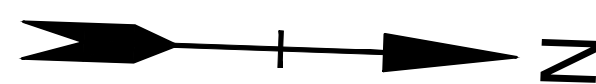
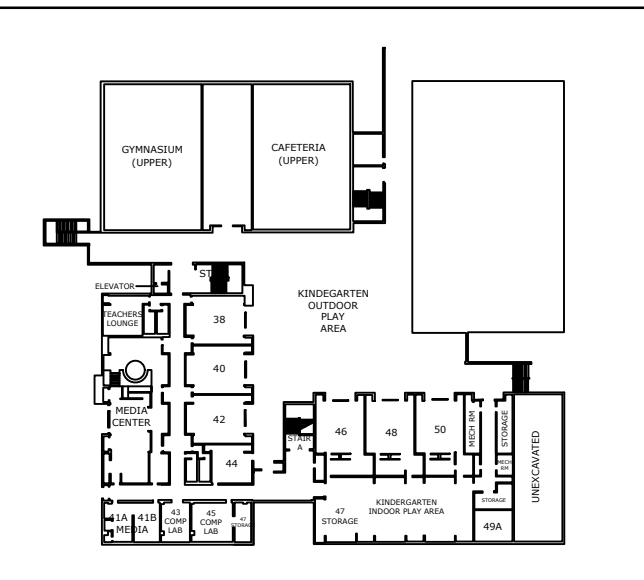



Lot 5 Area, 5/20/2019  
Printed On May 30, 2019 3:14pm By: BGautzetti  
Tighe & Bond: 115152087 Stamford1031 Mold Remediation Consulting Sites Toquam Magnet Drawings CAD Toquam Updated Floor Plan.dwg



## UPPER LEVEL



### LEGEND

- = REMOVE AND DISPOSE OF GYPSUM BOARD
-  = WORK AREA ENCLOSURE (ASBESTOS ABATEMENT)

### ABATEMENT NOTES

1. THE CONTRACTOR SHALL REMOVE, PACKAGE, AND TRANSPORT ASBESTOS-CONTAINING JOINT/TAPING COMPOUND AND ASSOCIATED GYPSUM BOARD AT INTERIOR MONITOR WINDOWS.  
**1A:** CAFETERIA AND GYMNASIUM - REMOVAL INCLUDES ALL GYPSUM WITHIN OPENING.  
**1B:** MIDDLE LEVEL CLASSROOM - REMOVAL INCLUDES VERTICAL WALL AT EXTERIOR TO FLOOR, VERTICAL WALL FACING EXTERIOR TO CEILING LINE, VERTICAL SIDE WALL TO FLOOR AND OUT TO CEILING LINE (13" OUT FROM EXTERIOR WALL).  
**1C:** MIDDLE LEVEL PLAY AREA - REMOVAL INCLUDES VERTICAL WALL AT EXTERIOR TO FLOOR, VERTICAL WALL FACING EXTERIOR TO CEILING LINE, AND VERTICAL SIDE WALLS AND CEILINGS TO STEEL COLUMN (35" OUT FROM EXTERIOR WALL).  
**1D:** UPPER LEVEL CORRIDORS - REMOVAL INCLUDES VERTICAL WALL AT CLASSROOM ENTRY TO FLOOR, VERTICAL SIDE WALLS TO CMU, VERTICAL WALL FACING ENTRY, AND SLANTED CEILING. REMOVAL TO INCLUDE ALL ASBESTOS CONTAINING COMPOUND DAUBS ON CMU LOCATED BEHIND GYPSUM WALLS.
2. THE CONTRACTOR SHALL REMOVE, PACKAGE, AND TRANSPORT ASBESTOS-CONTAINING JOINT/TAPING COMPOUND AND ASSOCIATED GYPSUM BOARD WALLS.  
**2A:** UPPER LEVEL CORRIDORS AND MIDDLE LEVEL CORRIDORS AND PLAY AREA - REMOVAL INCLUDES WALL LOCATIONS WITH VINYL COVERING.  
**2B:** MIDDLE LEVEL PLAY AREA OUTSIDE AT CLASSROOM ENTRIES - REMOVAL INCLUDES WALL LOCATIONS WITH VINYL COVERING. REMOVAL INCLUDES VERTICAL ENTRY WALLS TO BENCH, VERTICAL SIDE WALLS TO BENCH AND OUT TO STEEL COLUMNS (35" OUT FROM ENTRY WALL), AND CEILINGS TO STEEL COLUMN (35" OUT FROM ENTRY WALL).  
**2C:** LOWER LEVEL TEACHER'S LOUNGE - REMOVAL INCLUDES VERTICAL WALL ABOVE EXTERIOR DOOR SYSTEM.  
**2D:** UPPER LEVEL CLASSROOMS AND MIDDLE LEVEL TEACHER'S LOUNGE - REMOVAL INCLUDES VERTICAL WALL/SOFFIT ABOVE EXTERIOR WINDOW SYSTEMS.  
**2E:** UPPER LEVEL CLASSROOMS - REMOVAL INCLUDES WALLS/CEILING ISLAND SYSTEM.  
**2F:** MIDDLE LEVEL COMPUTER ROOM - REMOVAL INCLUDES 10 SQUARE FEET OF DAMAGED WALL AT ENTRY
3. THE CONTRACTOR SHALL REMOVE, PACKAGE, AND TRANSPORT ASBESTOS-CONTAINING JOINT/TAPING COMPOUND AND ASSOCIATED GYPSUM BOARD 6" SOFFIT BELOW SKYLIGHT OPENINGS IN CAFETERIA AND GYMNASIUM.
4. THE CONTRACTOR SHALL REMOVE, PACKAGE, AND TRANSPORT ASBESTOS-CONTAINING JOINT/TAPING COMPOUND AND ASSOCIATED GYPSUM BOARD CEILINGS (REMOVAL INCLUDES ASSOCIATED ASBESTOS MUDDER PIPE FITTING INSULATIONS).
5. THE CONTRACTOR SHALL REMOVE, PACKAGE, AND TRANSPORT ASBESTOS-CONTAINING JOINT/TAPING COMPOUND AND ASSOCIATED GYPSUM BOARD COLUMNS WITHIN LOWER LEVEL BOILER ROOM.
6. THE CONTRACTOR SHALL REMOVE MOLD IMPACTED AND/OR WATER-STAINED FIBERGLASS DUCT INSULATION WITHIN MIDDLE LEVEL STORAGE ROOM AND MECHANICAL ROOM.
7. THE CONTRACTOR SHALL REMOVE MOLD IMPACTED AND/OR WATER-STAINED FIBERGLASS PIPE INSULATION (REMOVAL INCLUDES ASSOCIATED ASBESTOS MUDDER PIPE FITTING INSULATIONS) AND MOLD IMPACTED AND/OR WATER STAINED CEILING TILES.

### GENERAL PROJECT NOTES

IF SUSPECT MOLD IS DISCOVERED WITHIN VOIDS AFTER GYPSUM BOARD REMOVAL, THE CONTRACTOR SHALL CONDUCT APPROVED MOLD REMEDIATION METHODS TO REMOVE THE SUSPECT MOLD.

THE CONTRACTOR SHALL ESTABLISH A REGULATED AREA ENCLOSURE IN ACCORDANCE WITH EPA AND CTDPH ASBESTOS ABATEMENT STANDARDS FOR ALL ASBESTOS REMOVAL WORK.

IF ENCOUNTERED DURING GYPSUM WALL DEMOLITION, THE CONTRACTOR IS RESPONSIBLE TO REMOVE ALL OTHER SUSPECT ASBESTOS-CONTAINING MATERIALS INCLUDING, BUT NOT LIMITED TO, PLUMBING INSULATIONS ASSOCIATED WITH PIPES, PIPE FITTINGS, AND ROOF DRAINS.

THIS PROJECT MAY REQUIRE MULTIPLE MOBILIZATIONS AND CONTAINMENTS. THE CONTRACTOR IS RESPONSIBLE FOR COORDINATING ABATEMENT WORK REQUIRED WITH THE BUILDING OWNER, OTHER TRADES, ARCHITECT, AND CONSULTANT.

THE CONTRACTOR IS RESPONSIBLE FOR PROVIDING TEMPORARY WATER, POWER, HEAT, LIFTS, STAGING, ETC. AS NEEDED AT THE SITE. TEMPORARY LIGHTING WITHIN THE WORK AREAS MUST BE CONNECTED TO GROUND FAULT CIRCUIT INTERRUPTER (GFCI) POWER PANELS INSTALLED BY A STATE OF CONNECTICUT LICENSED ELECTRICIAN, PERMITTED AS REQUIRED, AND LOCATED OUTSIDE OF THE WORK AREAS.

MARK	DATE	DESCRIPTION
PROJECT NO: S2087		
DATE: 05/30/2019		
FILE: Toquam Updated Floor Plan.dwg		
DRAWN BY: WAC & BG		
CHECKED: KM		
APPROVED: KM		

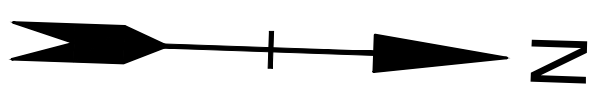
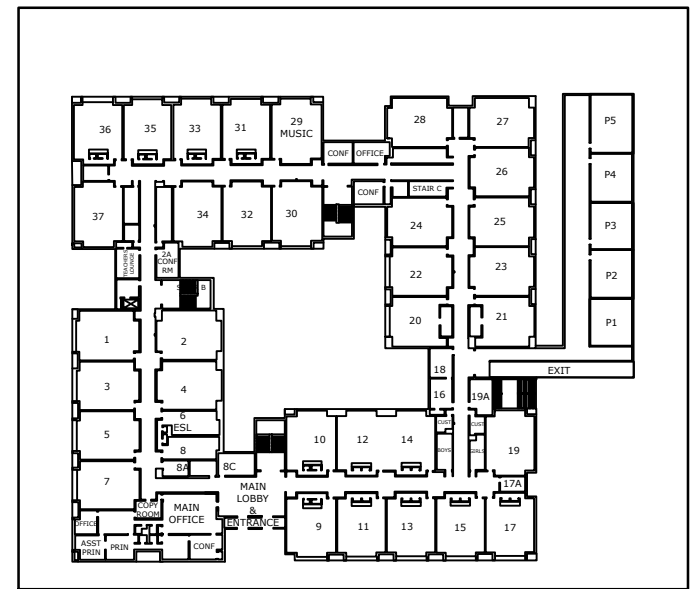
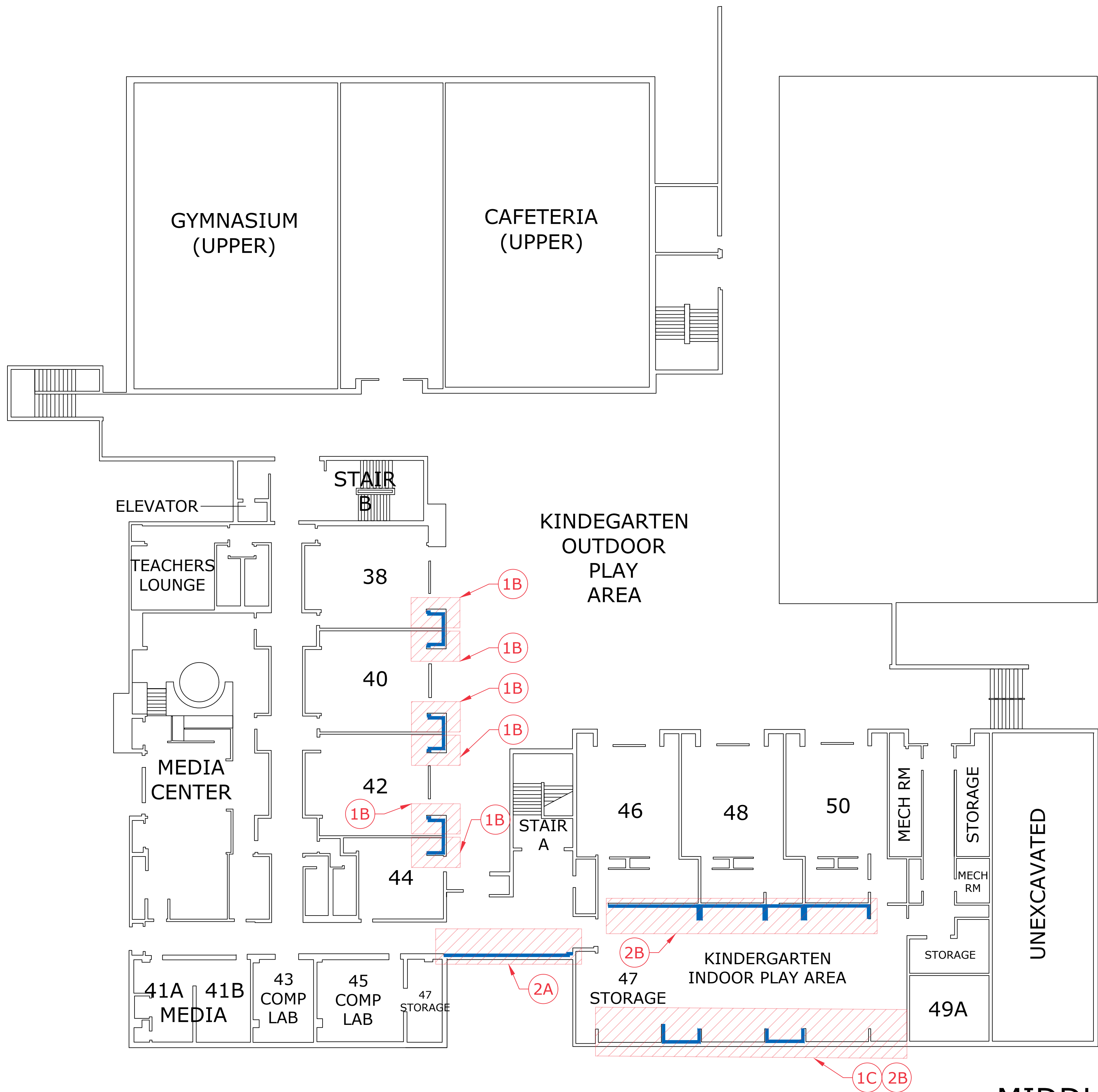
SUMMER 2019 WORK

SCALE: NOT TO SCALE



Figure 3.1



Lot 5 Area 5/20/2019  
Printed On May 30, 2019 3:13pm By: BGautzetti  
Tighe & Bond 115152087 Stamford1033 Mold Remediation Consulting\Sties\Toquam Magnet\Drawings\CAD\Toquam Magnet\Updated Floor Plan.dwg



LEGEND

-  = REMOVE AND DISPOSE OF GYPSUM BOARD
-  = WORK AREA ENCLOSURE (ASBESTOS ABATEMENT)

ABATEMENT NOTES

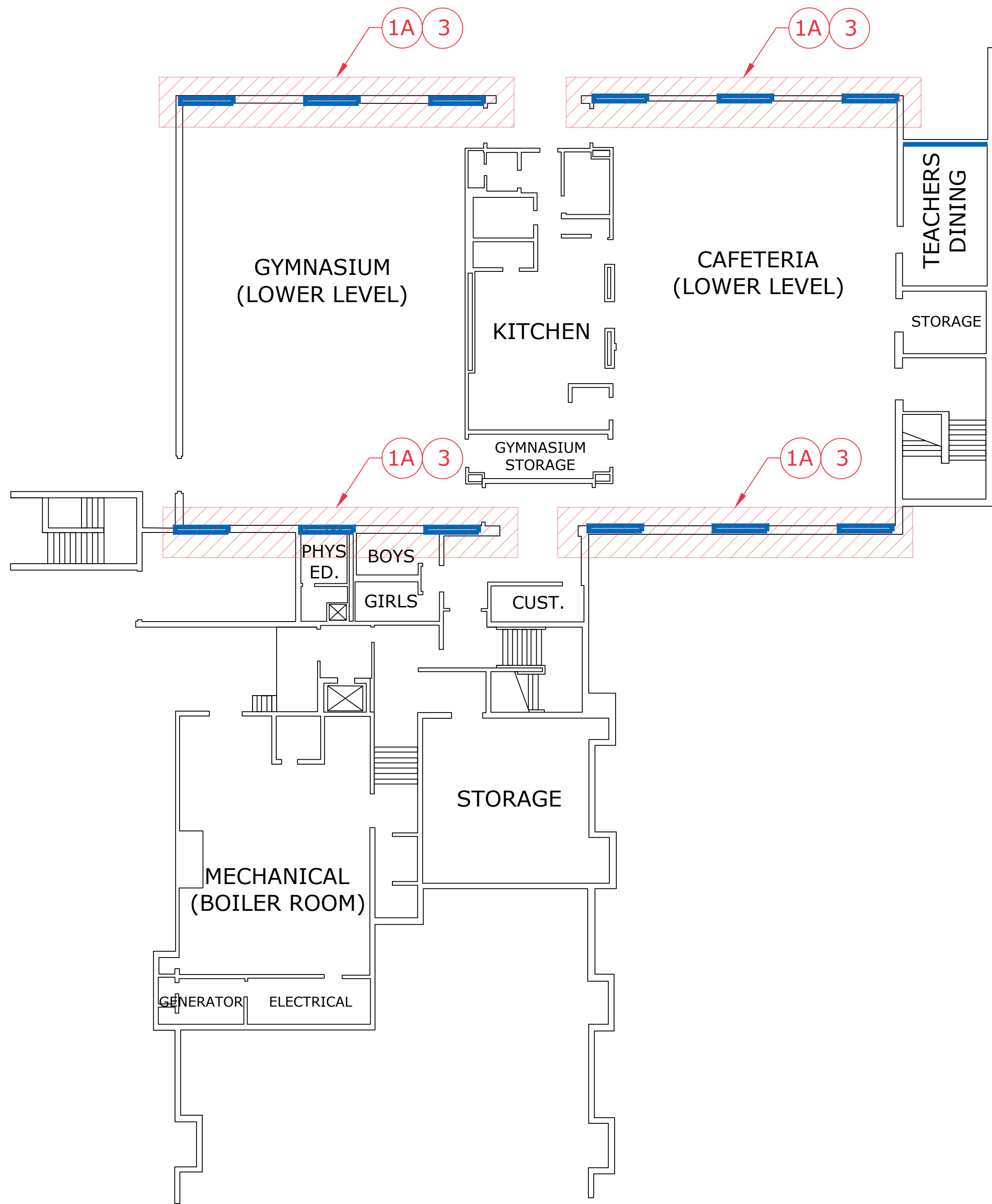
1. THE CONTRACTOR SHALL REMOVE, PACKAGE, AND TRANSPORT ASBESTOS-CONTAINING JOINT/TAPING COMPOUND AND ASSOCIATED GYPSUM BOARD AT INTERIOR MONITOR WINDOWS.  
**1A:** CAFETERIA AND GYMNASIUM - REMOVAL INCLUDES ALL GYPSUM WITHIN OPENING.  
**1B:** MIDDLE LEVEL CLASSROOM - REMOVAL INCLUDES VERTICAL WALL AT EXTERIOR TO FLOOR, VERTICAL WALL FACING EXTERIOR TO CEILING LINE, VERTICAL SIDE WALL TO FLOOR AND OUT TO CEILING LINE (13" OUT FROM EXTERIOR WALL).  
**1C:** MIDDLE LEVEL PLAY AREA - REMOVAL INCLUDES VERTICAL WALL AT EXTERIOR TO FLOOR, VERTICAL WALL FACING EXTERIOR TO CEILING LINE, AND VERTICAL SIDE WALLS AND CEILINGS TO STEEL COLUMN (35" OUT FROM EXTERIOR WALL).  
**1D:** UPPER LEVEL CORRIDORS - REMOVAL INCLUDES VERTICAL WALL AT CLASSROOM ENTRY TO FLOOR, VERTICAL SIDE WALLS TO CMU, VERTICAL WALL FACING ENTRY, AND SLANTED CEILING. REMOVAL TO INCLUDE ALL ASBESTOS CONTAINING COMPOUND DAUBS ON CMU LOCATED BEHIND GYPSUM WALLS.
2. THE CONTRACTOR SHALL REMOVE, PACKAGE, AND TRANSPORT ASBESTOS-CONTAINING JOINT/TAPING COMPOUND AND ASSOCIATED GYPSUM BOARD WALLS.  
**2A:** UPPER LEVEL CORRIDORS AND MIDDLE LEVEL CORRIDORS AND PLAY AREA - REMOVAL INCLUDES WALL LOCATIONS WITH VINYL COVERING.  
**2B:** MIDDLE LEVEL PLAY AREA OUTSIDE AT CLASSROOM ENTRIES - REMOVAL INCLUDES WALL LOCATIONS WITH VINYL COVERING. REMOVAL INCLUDES VERTICAL ENTRY WALLS TO BENCH, VERTICAL SIDE WALLS TO BENCH AND OUT TO STEEL COLUMNS (35" OUT FROM ENTRY WALL), AND CEILINGS TO STEEL COLUMN (35" OUT FROM ENTRY WALL).  
**2C:** LOWER LEVEL TEACHER'S LOUNGE - REMOVAL INCLUDES VERTICAL WALL ABOVE EXTERIOR DOOR SYSTEM.  
**2D:** UPPER LEVEL CLASSROOMS AND MIDDLE LEVEL TEACHER'S LOUNGE - REMOVAL INCLUDES VERTICAL WALL/SOFFIT ABOVE EXTERIOR WINDOW SYSTEMS.  
**2E:** UPPER LEVEL CLASSROOMS - REMOVAL INCLUDES WALLS/CEILING ISLAND SYSTEM.  
**2F:** MIDDLE LEVEL COMPUTER ROOM - REMOVAL INCLUDES 10 SQUARE FEET OF DAMAGED WALL AT ENTRY
3. THE CONTRACTOR SHALL REMOVE, PACKAGE, AND TRANSPORT ASBESTOS-CONTAINING JOINT/TAPING COMPOUND AND ASSOCIATED GYPSUM BOARD 6" SOFFIT BELOW SKYLIGHT OPENINGS IN CAFETERIA AND GYMNASIUM.
4. THE CONTRACTOR SHALL REMOVE, PACKAGE, AND TRANSPORT ASBESTOS-CONTAINING JOINT/TAPING COMPOUND AND ASSOCIATED GYPSUM BOARD CEILINGS (REMOVAL INCLUDES ASSOCIATED ASBESTOS MUDDIED PIPE FITTING INSULATIONS).
5. THE CONTRACTOR SHALL REMOVE, PACKAGE, AND TRANSPORT ASBESTOS-CONTAINING JOINT/TAPING COMPOUND AND ASSOCIATED GYPSUM BOARD COLUMNS WITHIN LOWER LEVEL BOILER ROOM.
6. THE CONTRACTOR SHALL REMOVE MOLD IMPACTED AND/OR WATER-STAINED FIBERGLASS DUCT INSULATION WITHIN MIDDLE LEVEL STORAGE ROOM AND MECHANICAL ROOM.
7. THE CONTRACTOR SHALL REMOVE MOLD IMPACTED AND/OR WATER-STAINED FIBERGLASS PIPE INSULATION (REMOVAL INCLUDES ASSOCIATED ASBESTOS MUDDIED PIPE FITTING INSULATIONS) AND MOLD IMPACTED AND/OR WATER STAINED CEILING TILES.

GENERAL PROJECT NOTES

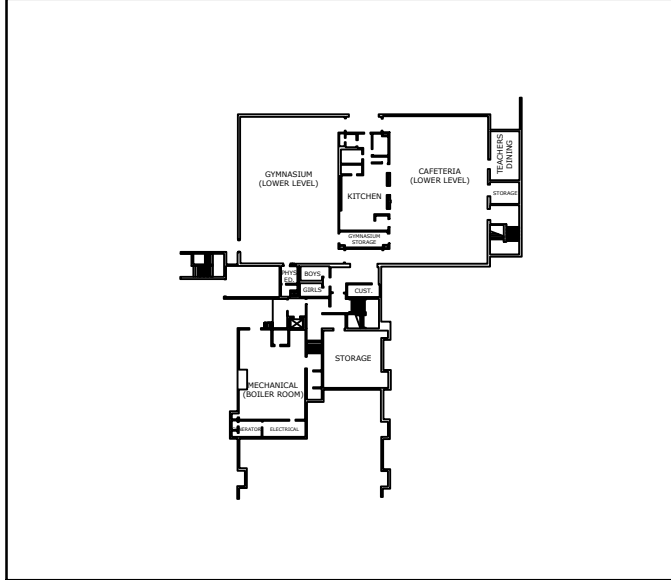
- IF SUSPECT MOLD IS DISCOVERED WITHIN VOIDS AFTER GYPSUM BOARD REMOVAL, THE CONTRACTOR SHALL CONDUCT APPROVED MOLD REMEDIATION METHODS TO REMOVE THE SUSPECT MOLD.
- THE CONTRACTOR SHALL ESTABLISH A REGULATED AREA ENCLOSURE IN ACCORDANCE WITH EPA AND CTDPH ASBESTOS ABATEMENT STANDARDS FOR ALL ASBESTOS REMOVAL WORK.
- IF ENCOUNTERED DURING GYPSUM WALL DEMOLITION, THE CONTRACTOR IS RESPONSIBLE TO REMOVE ALL OTHER SUSPECT ASBESTOS-CONTAINING MATERIALS INCLUDING, BUT NOT LIMITED TO, PLUMBING INSULATIONS ASSOCIATED WITH PIPES, PIPE FITTINGS, AND ROOF DRAINS.
- THIS PROJECT MAY REQUIRE MULTIPLE MOBILIZATIONS AND CONTAINMENTS. THE CONTRACTOR IS RESPONSIBLE FOR COORDINATING ABATEMENT WORK REQUIRED WITH THE BUILDING OWNER, OTHER TRADES, ARCHITECT, AND CONSULTANT.
- THE CONTRACTOR IS RESPONSIBLE FOR PROVIDING TEMPORARY WATER, POWER, HEAT, LIFTS, STAGING, ETC. AS NEEDED AT THE SITE. TEMPORARY LIGHTING WITHIN THE WORK AREAS MUST BE CONNECTED TO GROUND FAULT CIRCUIT INTERRUPTER (GFCI) POWER PANELS INSTALLED BY A STATE OF CONNECTICUT LICENSED ELECTRICIAN, PERMITTED AS REQUIRED, AND LOCATED OUTSIDE OF THE WORK AREAS.

MARK	DATE	DESCRIPTION
PROJECT NO: S2087		
DATE: 5/30/2019		
FILE: Toquam Updated Floor Plan.dwg		
DRAWN BY: WAC & BG		
CHECKED: KM		
APPROVED: KM		
SUMMER 2019 WORK		
SCALE: NOT TO SCALE		
Figure 3.2		



Lot: S2087, 5/30/2019  
Printed On: May 30, 2019 3:12pm By: BGautzetti  
Tighe & Bond: J:\S2087 Stamford\Drawings\CAD\Toquam Magnet\Drawings\CAD\Toquam Updated Floor Plan.dwg



## LOWER LEVEL



### LEGEND

-  = REMOVE AND DISPOSE OF GYPSUM BOARD
-  = WORK AREA ENCLOSURE (ASBESTOS ABATEMENT)

### ABATEMENT NOTES

1. THE CONTRACTOR SHALL REMOVE, PACKAGE, AND TRANSPORT ASBESTOS-CONTAINING JOINT/TAPING COMPOUND AND ASSOCIATED GYPSUM BOARD AT INTERIOR MONITOR WINDOWS.  
**1A:** CAFETERIA AND GYMNASIUM - REMOVAL INCLUDES ALL GYPSUM WITHIN OPENING.  
**1B:** MIDDLE LEVEL CLASSROOM - REMOVAL INCLUDES VERTICAL WALL AT EXTERIOR TO FLOOR, VERTICAL WALL FACING EXTERIOR TO CEILING LINE, VERTICAL SIDE WALL TO FLOOR AND OUT TO CEILING LINE (13" OUT FROM EXTERIOR WALL).  
**1C:** MIDDLE LEVEL PLAY AREA - REMOVAL INCLUDES VERTICAL WALL AT EXTERIOR TO FLOOR, VERTICAL WALL FACING EXTERIOR TO CEILING LINE, AND VERTICAL SIDE WALLS AND CEILINGS TO STEEL COLUMN (35" OUT FROM EXTERIOR WALL).  
**1D:** UPPER LEVEL CORRIDORS - REMOVAL INCLUDES VERTICAL WALL AT CLASSROOM ENTRY TO FLOOR, VERTICAL SIDE WALLS TO CMU, VERTICAL WALL FACING ENTRY, AND SLANTED CEILING. REMOVAL TO INCLUDE ALL ASBESTOS CONTAINING COMPOUND DAUBS ON CMU LOCATED BEHIND GYPSUM WALLS.
2. THE CONTRACTOR SHALL REMOVE, PACKAGE, AND TRANSPORT ASBESTOS-CONTAINING JOINT/TAPING COMPOUND AND ASSOCIATED GYPSUM BOARD WALLS.  
**2A:** UPPER LEVEL CORRIDORS AND MIDDLE LEVEL CORRIDORS AND PLAY AREA - REMOVAL INCLUDES WALL LOCATIONS WITH VINYL COVERING.  
**2B:** MIDDLE LEVEL PLAY AREA OUTSIDE AT CLASSROOM ENTRIES - REMOVAL INCLUDES WALL LOCATIONS WITH VINYL COVERING. REMOVAL INCLUDES VERTICAL ENTRY WALLS TO BENCH, VERTICAL SIDE WALLS TO BENCH AND OUT TO STEEL COLUMNS (35" OUT FROM ENTRY WALL), AND CEILINGS TO STEEL COLUMN (35" OUT FROM ENTRY WALL).  
**2C:** LOWER LEVEL TEACHER'S LOUNGE - REMOVAL INCLUDES VERTICAL WALL ABOVE EXTERIOR DOOR SYSTEM.  
**2D:** UPPER LEVEL CLASSROOMS AND MIDDLE LEVEL TEACHER'S LOUNGE - REMOVAL INCLUDES VERTICAL WALL/SOFFIT ABOVE EXTERIOR WINDOW SYSTEMS.  
**2E:** UPPER LEVEL CLASSROOMS - REMOVAL INCLUDES WALLS/CEILING ISLAND SYSTEM.  
**2F:** MIDDLE LEVEL COMPUTER ROOM - REMOVAL INCLUDES 10 SQUARE FEET OF DAMAGED WALL AT ENTRY
3. THE CONTRACTOR SHALL REMOVE, PACKAGE, AND TRANSPORT ASBESTOS-CONTAINING JOINT/TAPING COMPOUND AND ASSOCIATED GYPSUM BOARD 6" SOFFIT BELOW SKYLIGHT OPENINGS IN CAFETERIA AND GYMNASIUM.
4. THE CONTRACTOR SHALL REMOVE, PACKAGE, AND TRANSPORT ASBESTOS-CONTAINING JOINT/TAPING COMPOUND AND ASSOCIATED GYPSUM BOARD CEILINGS (REMOVAL INCLUDES ASSOCIATED ASBESTOS MUDDED PIPE FITTING INSULATIONS).
5. THE CONTRACTOR SHALL REMOVE, PACKAGE, AND TRANSPORT ASBESTOS-CONTAINING JOINT/TAPING COMPOUND AND ASSOCIATED GYPSUM BOARD COLUMNS WITHIN LOWER LEVEL BOILER ROOM.
6. THE CONTRACTOR SHALL REMOVE MOLD IMPACTED AND/OR WATER-STAINED FIBERGLASS DUCT INSULATION WITHIN MIDDLE LEVEL STORAGE ROOM AND MECHANICAL ROOM.
7. THE CONTRACTOR SHALL REMOVE MOLD IMPACTED AND/OR WATER-STAINED FIBERGLASS PIPE INSULATION (REMOVAL INCLUDES ASSOCIATED ASBESTOS MUDDED PIPE FITTING INSULATIONS) AND MOLD IMPACTED AND/OR WATER STAINED CEILING TILES.

### GENERAL PROJECT NOTES

IF SUSPECT MOLD IS DISCOVERED WITHIN VOIDS AFTER GYPSUM BOARD REMOVAL, THE CONTRACTOR SHALL CONDUCT APPROVED MOLD REMEDIATION METHODS TO REMOVE THE SUSPECT MOLD.

THE CONTRACTOR SHALL ESTABLISH A REGULATED AREA ENCLOSURE IN ACCORDANCE WITH EPA AND CTDPH ASBESTOS ABATEMENT STANDARDS FOR ALL ASBESTOS REMOVAL WORK.

IF ENCOUNTERED DURING GYPSUM WALL DEMOLITION, THE CONTRACTOR IS RESPONSIBLE TO REMOVE ALL OTHER SUSPECT ASBESTOS-CONTAINING MATERIALS INCLUDING, BUT NOT LIMITED TO, PLUMBING INSULATIONS ASSOCIATED WITH PIPES, PIPE FITTINGS, AND ROOF DRAINS.

THIS PROJECT MAY REQUIRE MULTIPLE MOBILIZATIONS AND CONTAINMENTS. THE CONTRACTOR IS RESPONSIBLE FOR COORDINATING ABATEMENT WORK REQUIRED WITH THE BUILDING OWNER, OTHER TRADES, ARCHITECT, AND CONSULTANT.

THE CONTRACTOR IS RESPONSIBLE FOR PROVIDING TEMPORARY WATER, POWER, HEAT, LIFTS, STAGING, ETC. AS NEEDED AT THE SITE. TEMPORARY LIGHTING WITHIN THE WORK AREAS MUST BE CONNECTED TO GROUND FAULT CIRCUIT INTERRUPTER (GFCI) POWER PANELS INSTALLED BY A STATE OF CONNECTICUT LICENSED ELECTRICIAN, PERMITTED AS REQUIRED, AND LOCATED OUTSIDE OF THE WORK AREAS.

MARK	DATE	DESCRIPTION
PROJECT NO: S2087		
DATE: 5/30/2019		
FILE: Toquam Updated Floor Plan.dwg		
DRAWN BY: WAC & BG		
CHECKED: KM		
APPROVED: KM		

SUMMER 2019 WORK

SCALE: NOT TO SCALE

Figure 3.3