



Imagery ©2019 Google, Map data ©2019 Google 100 ft

TESTPITS Feisdn 1/25/19

TP1 DEPTH 5 FT sandfill with cobbles
GW @ 4 FT ? brick debris

TP3 DEPTH 5 FT sandfill with cobbles
GW 4.5 FT wood debris

TP5 DEPTH 7'8" FT - sand fill w/ asphalt
GW 6'6" FT ? brick debris cobbles
- light brown material

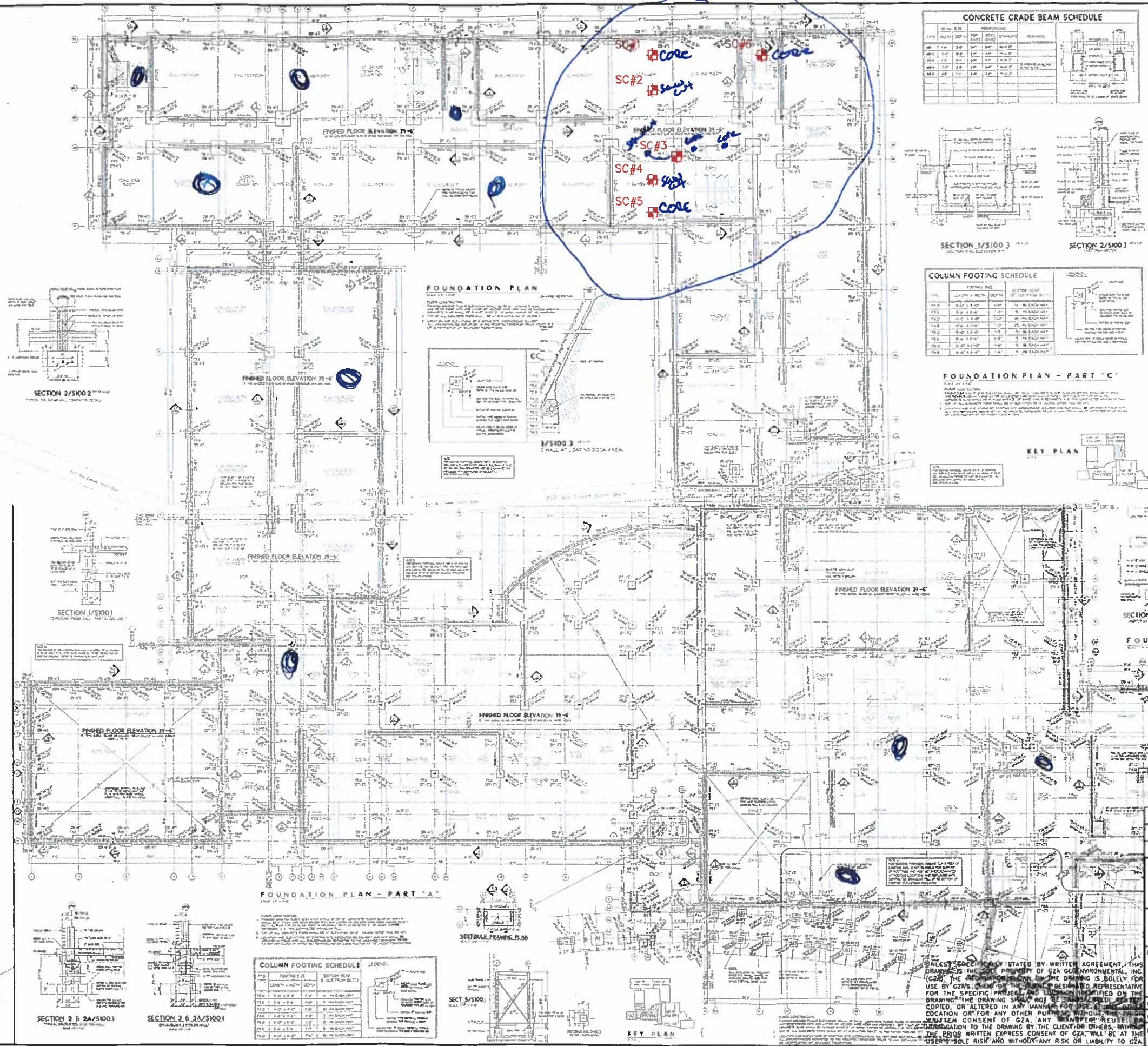
TP2 DEPTH 7 FT sandfill with cobbles
GW @ 6.5 FT wood debris

TP4 DEPTH 8 FT sandfill with cobbles
GW perched water 5'6" brick debris
6-8 FT peat

+ fine to medium sand
olive

GZA 1-24-19 saw cuts & core into slab

focused on the
be able to



CONCRETE GRADE BEAM SCHEDULE

BEAM NO.	TYPE	DEPTH	REINFORCEMENT	REMARKS
101	1-1/2"	12"	4#4	10' LONG
102	1-1/2"	12"	4#4	10' LONG
103	1-1/2"	12"	4#4	10' LONG
104	1-1/2"	12"	4#4	10' LONG
105	1-1/2"	12"	4#4	10' LONG
106	1-1/2"	12"	4#4	10' LONG

COLUMN FOOTING SCHEDULE

FOOTING NO.	TYPE	LENGTH	WIDTH	DEPTH	REINFORCEMENT	REMARKS
F101	1-1/2"	12"	12"	12"	4#4	10' LONG
F102	1-1/2"	12"	12"	12"	4#4	10' LONG
F103	1-1/2"	12"	12"	12"	4#4	10' LONG
F104	1-1/2"	12"	12"	12"	4#4	10' LONG
F105	1-1/2"	12"	12"	12"	4#4	10' LONG
F106	1-1/2"	12"	12"	12"	4#4	10' LONG

NEW WESTOVER ELEMENTARY SCHOOL
STAMFORD, CONNECTICUT

FOUNDATION PLAN - PART 'C'

FOUNDATION PLAN - PART 'D'

MECH. RM PIPE TRENCH DET.

NO.	ISSUE/DESCRIPTION	BY	DATE

WESTOVER MAGNET SCHOOL
STAMFORD, CONNECTICUT

PROPOSED SLAB INVESTIGATION LOCATIONS (FOUNDATION PLAN)

PREPARED BY: **GZA GeoEnvironmental, Inc. Engineers and Scientists**
1300 MAIN STREET, SUITE 1400
SPRINGFIELD, MA 01103
(413) 728-2100

PREPARED FOR: **CITY OF STAMFORD**
888 WASHINGTON BLVD
STAMFORD, CT 06901

PROJ MGR:	REVIEWED BY:	CHECKED BY:	FIGURE
NLR	TEJ	NLR	1

DESIGNED BY:	DRAWN BY:	SCALE:
NLR	EDM	AS SHOWN

DATE:	PROJECT NO.:	REVISION NO.:
JANUARY 2019		0

UNLESS SPECIFICALLY STATED BY WRITTEN AGREEMENT, THIS DRAWING IS THE PROPERTY OF GZA GEOENVIRONMENTAL, INC. (GZA). THE INFORMATION ON THIS DRAWING IS SOLELY FOR USE BY GZA'S CLIENT OR OTHER PURCHASER TO REPRESENTATIVE FOR THE SPECIFIC PROJECT AND LOCATION IDENTIFIED ON THE DRAWING. THE DRAWING SHALL NOT BE REPRODUCED, COPIED, OR ALTERED IN ANY MANNER FOR ANY OTHER LOCATION OR FOR ANY OTHER PURPOSE WITHOUT THE WRITTEN CONSENT OF GZA. ANY REPRODUCTION, REUSE, OR MODIFICATION TO THE DRAWING BY THE CLIENT OR OTHERS WITHOUT THE PRIOR WRITTEN EXPRESS CONSENT OF GZA, WILL BE AT THE USER'S SOLE RISK AND WITHOUT ANY RISK OR LIABILITY TO GZA.

GZA GeoEnvironmental, Inc. 1300 Main Street, Suite 1400, Springfield, MA 01103 (413) 728-2100