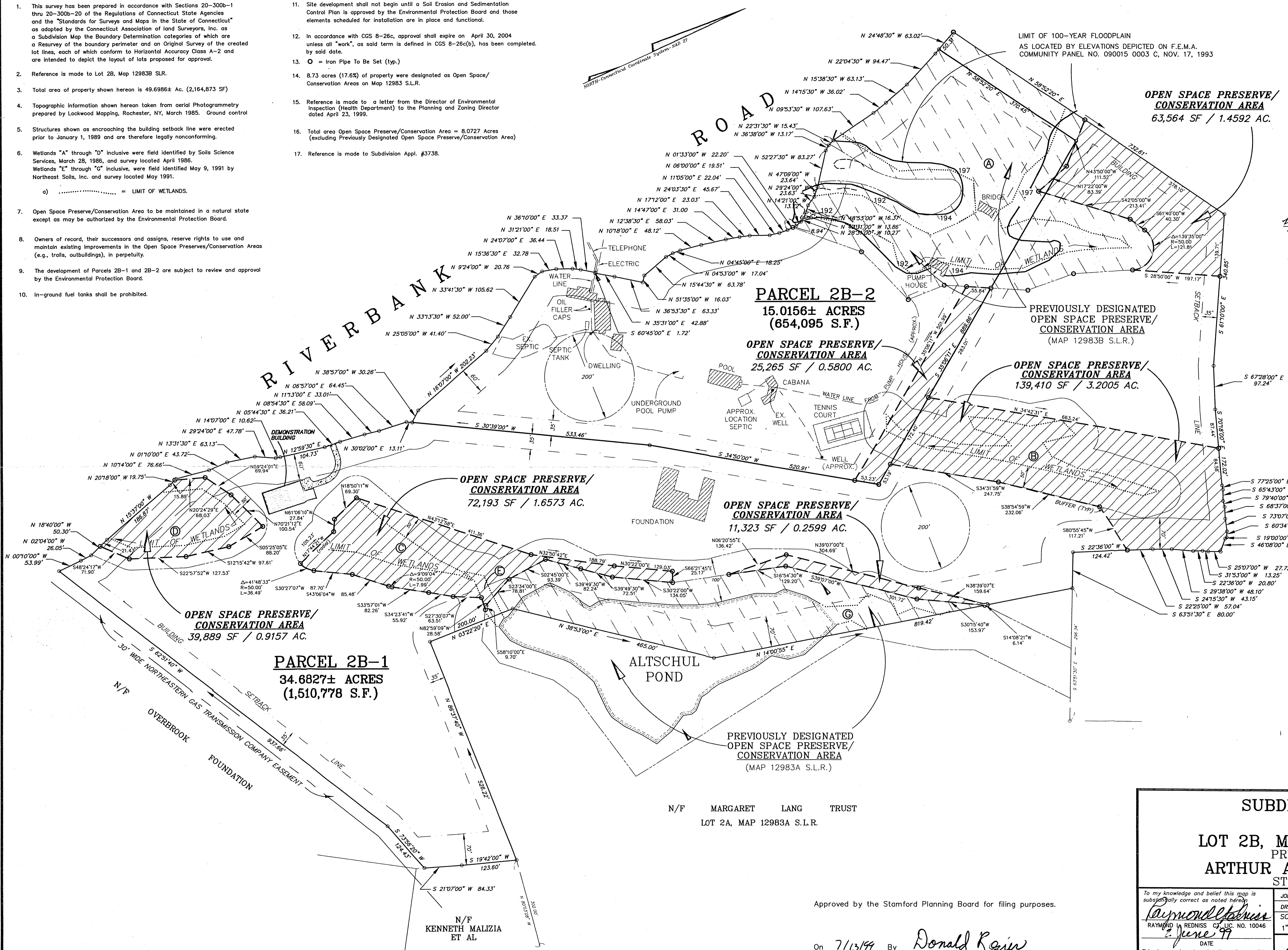
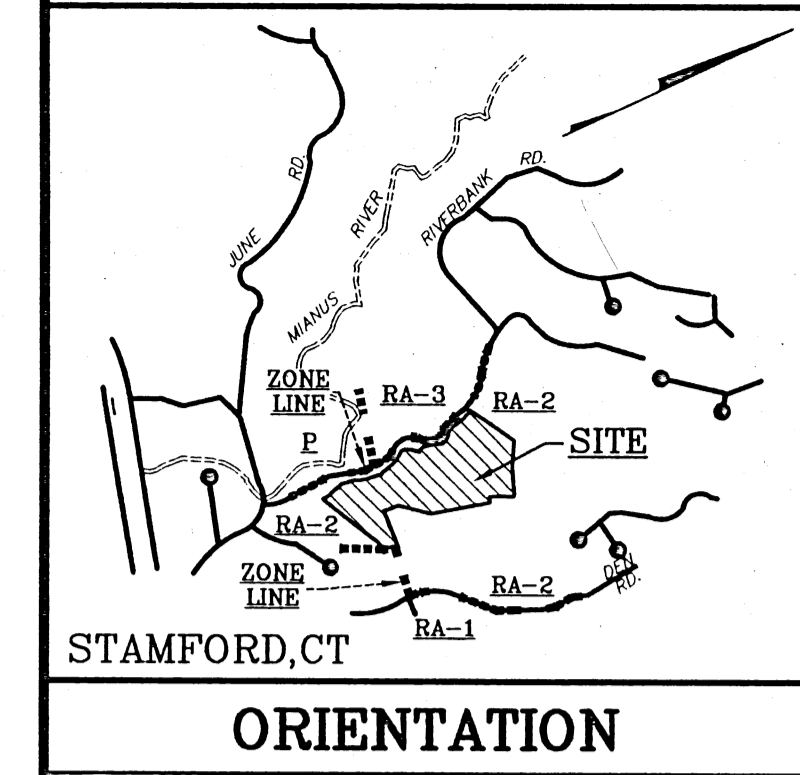


NOTES

- This survey has been prepared in accordance with Sections 20-300b-1 thru 20-300b-20 of the Regulations of Connecticut State Agencies and the "Standards for Surveys and Maps in the State of Connecticut" as adopted by the Connecticut Association of Land Surveyors, Inc. as a Subdivision Map the Boundary Determination categories of which are a Resurvey of the boundary perimeter and an Original Survey of the created lot lines, each of which conform to Horizontal Accuracy Class A-2 and are intended to depict the layout of lots proposed for approval.
- Reference is made to Lot 2B, Map 12983B S.L.R.
- Total area of property shown hereon is 49.6986± Ac. (2,164,873 SF)
- Topographic information shown hereon taken from aerial Photogrammetry prepared by Lockwood Mapping, Rochester, NY, March 1985. Ground control
- Structures shown as encroaching the building setback line were erected prior to January 1, 1989 and are therefore legally nonconforming.
- Wetlands "A" through "D" inclusive were field identified by Soils Science Services, March 28, 1986, and survey located April 1986. Wetlands "E" through "G" inclusive, were field identified May 9, 1991 by Northeast Soils, Inc. and survey located May 1991.
 - = LIMIT OF WETLANDS.
- Open Space Preserve/Conservation Area to be maintained in a natural state except as may be authorized by the Environmental Protection Board.
- Owners of record, their successors and assigns, reserve rights to use and maintain existing improvements in the Open Space Preserves/Conservation Areas (e.g., trails, outbuildings), in perpetuity.
- The development of Parcels 2B-1 and 2B-2 are subject to review and approval by the Environmental Protection Board.
- In-ground fuel tanks shall be prohibited.
- Site development shall not begin until a Soil Erosion and Sedimentation Control Plan is approved by the Environmental Protection Board and those elements scheduled for installation are in place and functional.
- In accordance with CGS 8-26c, approval shall expire on April 30, 2004 unless all "work", as said term is defined in CGS 8-26c(b), has been completed, by said date.
- O = Iron Pipe To Be Set (typ.)
- 8.73 acres (17.6%) of property were designated as Open Space/Conservation Areas on Map 12983 S.L.R.
- Reference is made to a letter from the Director of Environmental Inspection (Health Department) to the Planning and Zoning Director dated April 23, 1999.
- Total area Open Space Preserve/Conservation Area = 8.0727 Acres (excluding Previously Designated Open Space Preserve/Conservation Area)
- Reference is made to Subdivision Appl. #3738.



N/F MARGARET LANG TRUST
LOT 2A, MAP 12983A S.L.R.

N/F KENNETH MALIZIA ET AL

Approved by the Stamford Planning Board for filing purposes.

On 7/13/99 By *Donald Rejin*

SUBDIVISION MAP
OF
LOT 2B, MAP 12983B S.L.R.
PREPARED FOR
ARTHUR ALTSCHUL TRUST
STAMFORD, CT.

To my knowledge and belief this map is substantially correct as noted hereon.	JOB NO.: 3939A-6 DATE: MAY 27, 1999
DRAWN BY: EJ/RLR CHECKED BY:	SCALE: 0 100 200
RAYMOND L. REDNISS, C.E., NO. 10046	1" = 100'
DATE: June 99	3939P.SUBF.DWG

This document and copies thereof are valid only if they bear the signature and embossed seal of the designated licensed professional. Unauthorized alterations render any declaration hereon null & void.

Redniss & Mead
ENGINEERS - PLANNERS - SURVEYORS - ENVIRONMENTAL CONSULTANTS
22 FIRST STREET - STAMFORD, CONNECTICUT 06905 - TEL: 327-0500 FAX: 357-1118