

Westhill High School

AC – 1 Duct Cleaning

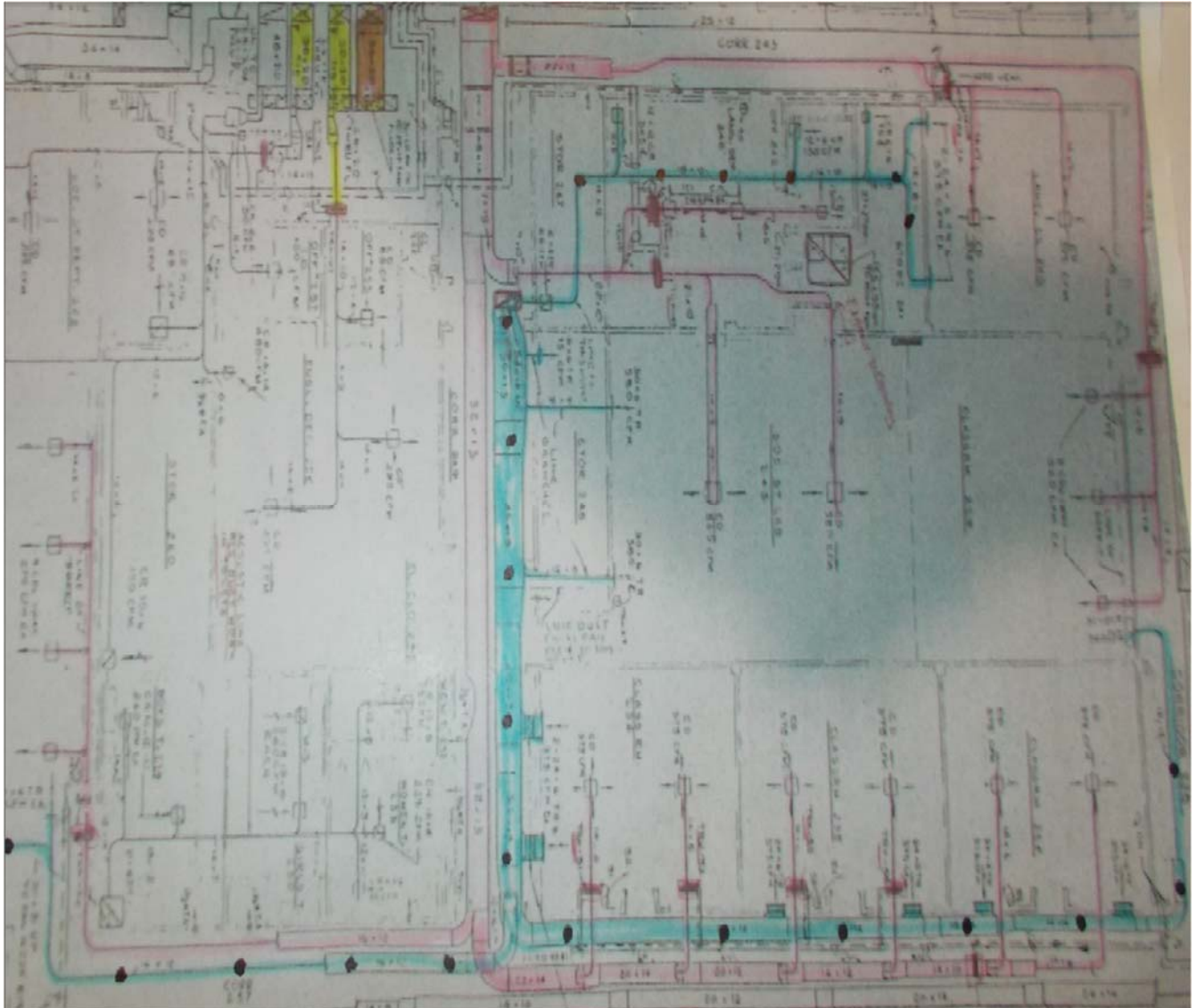
Return and Supply Ductwork

During the 4 days between Christmas and New Years Day, Bismark Construction began the cleaning of the duct work for AC – 1. AC – 1 services a majority of the second floor which is where we did our work. We began with the return duct work as it is typically dirtier than the supply because it is “sucking” air from the rooms back to the AC unit and dust and dirt gets pulled into the ducts. We found, however, that the supply side was just as bad and, in some cases, worse off than the return side.

We shut down the AC unit and the return fan and installed a negative air machine that would pull any loose dust particles away from the open ductwork to ensure the classrooms/corridors remained clean. We then cut penetrations into the ductwork in the hallways and began cleaning. Once the cleaning was done, we installed new sheetmetal over the holes and sealed them shut.

This report will show pictures taken before and after the cleaning began of both the return and supply ductwork. The following page shows the return duct work (blue) and the supply ductwork that has been/will be cleaned during the course of this scope of work. The black dots on the blue line represent where we cut into the duct work for access and resealed.

The largest areas of concern are the reheat coils located within the supply ductwork. Most of them are severely clogged with dust which greatly reduces air flow. It is Bismark’s recommendation that all ductwork within the school be cleaned every 3 to 5 years.





Return Duct work inside the Language Department Storage Closet





Return Ductwork in hallway by room 221







Return Duct work outside World Language Department Office (Room 246 on dwg A3 dated 12/11/95)





Return's inside classrooms 212 and 214





Supply duct – Reheat Coil





Supply Ductwork in Hallway







Supply Ductwork – Hallway





Supply duct work - Hallway

