

BLOCK 308 ZONE M-G, RM-1

FROM	TO	BEARING	DISTANCE
N	A	N27°20'55"E	34.50'
N	B	N21°46'18"E	56.42'
N	C	N19°18'38"E	78.54'
N	D	N17°58'25"E	100.49'
N	E	N16°59'23"E	127.71'
N	F	N16°16'01"E	153.30'
N	G	N15°49'27"E	174.76'
N	H	N15°28'42"E	196.23'
N	I	N15°12'02"E	217.71'
N	J	N14°58'22"E	239.19'
N	K	N3°47'37"E	242.31'
N	L	N2°55'28"W	248.82'
N	M	N3°32'52"W	227.17'
N	N	N5°12'35"W	206.61'
N	O	N7°14'12"W	186.26'
N	P	N9°45'24"W	166.20'
N	Q	N17°06'11"W	147.54'
N	R	N21°46'45"W	122.16'
N	S	N28°41'51"W	104.85'
N	T	N38°16'13"W	89.49'
N	U	N51°17'35"W	77.55'
N	V	N18°27'17"W	39.28'
N	W	N1°36'23"W	80.76'
N	X	N49°46'14"W	239.19'
N	Y	N54°37'31"W	228.97'
N	AA	N59°53'29"W	220.55'
N	BB	N65°31'26"W	214.12'
N	CC	N71°26'38"W	209.88'
N	DD	N77°32'47"W	207.96'
N	EE	S17°03'07"E	66.24'

FROM	TO	BEARING	DISTANCE
Z	P1	S4°09'00"W	142.61'
Z	P2	N8°03'00"E	72.00'
Z	P3	S18°02'55"E	158.44'
Z	P4	N08°03'00"E	90.00'
Z	P5	N21°27'00"E	45.00'
Z	P6	N30°52'00"E	119.55'
Z	P7	N14°45'00"E	42.67'
Z	P8	N9°32'00"W	114.37'
Z	P9	N24°31'00"W	20.24'
Z	Z	S25°43'18"W	283.27'

NOTES:

- REFER TO MAP 12246 S.L.R.
- AREA = 3.42± ACRES.
- ELEVATIONS SHOWN ARE BASED ON N.G.V.D. 1929.
- BASE ELEVATIONS FOR UNITS:
UNITS 1-21 = 28.5'
UNITS 22 AND 23 = 46.5' (STAIRWELL=28.5')
- DEVELOPMENT RIGHTS RESERVED THROUGHOUT ENTIRE PARCEL.
- UNIT 11 HAS NO LIMITED COMMON ELEMENT.
- UNIT SQUARE FOOTAGE AS SHOWN IS APPROXIMATE, THEREFORE VARIATIONS MAY OCCUR.
- CEILING HEIGHTS UNDER UNITS 22 AND 23 IS 16.5'.

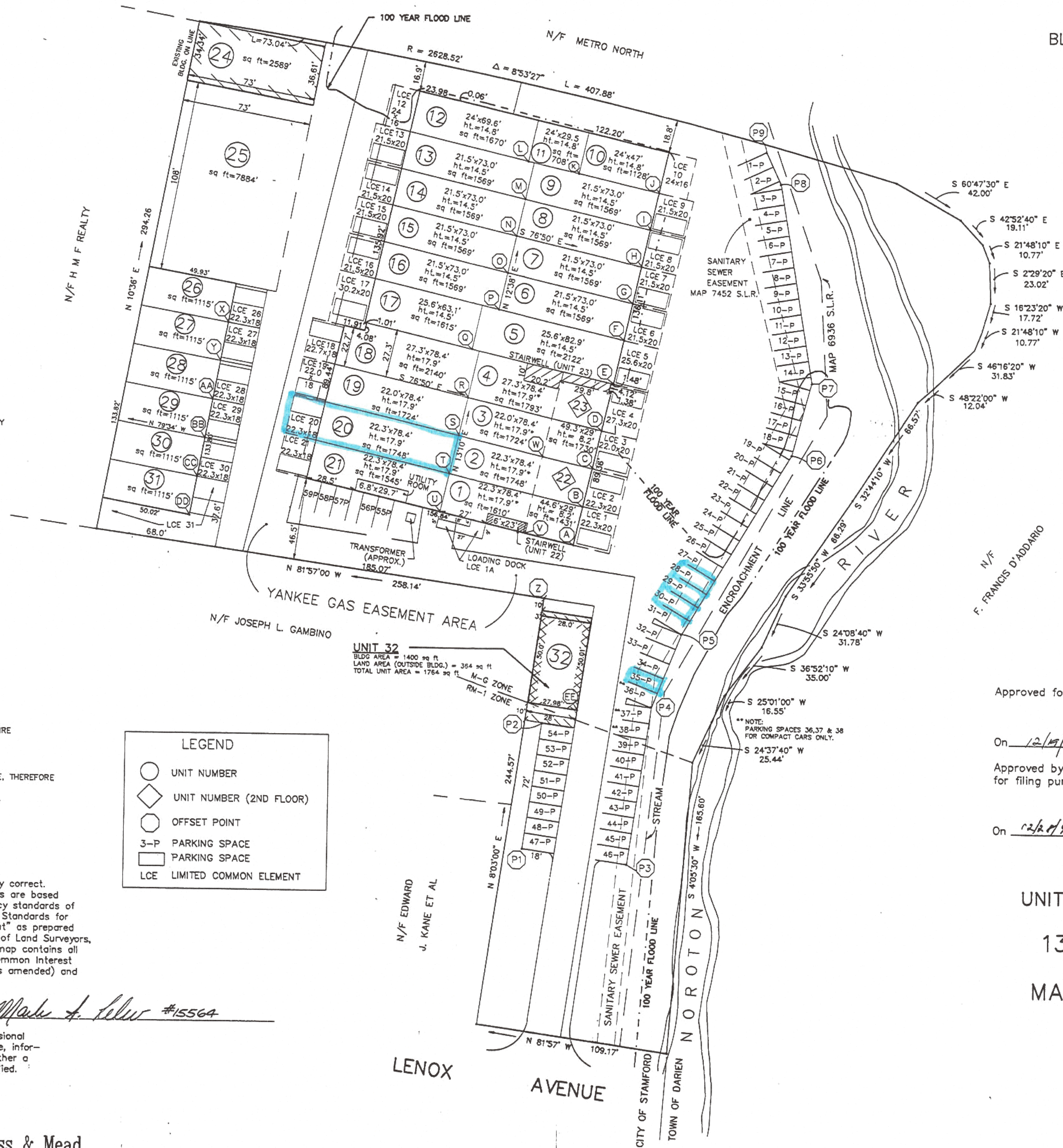
LEGEND

- UNIT NUMBER
- ◇ UNIT NUMBER (2ND FLOOR)
- OFFSET POINT
- 3-P PARKING SPACE
- PARKING SPACE
- LCE LIMITED COMMON ELEMENT

I hereby certify that this map is substantially correct. The boundary survey on which these locations are based was prepared in accordance with the accuracy standards of Class A-2 as defined in the "Recommended Standards for Surveys and Maps in the State of Connecticut" as prepared and adopted by the Connecticut Association of Land Surveyors, Inc., on September 13, 1984, and that this map contains all information required by Section 29 of the Common Interest Ownership Act (C.G.S. Section 47-228(b), as amended) and not otherwise shown on the plans.

ON 18 DEC., 1990 BY Mark A. Selig #15564

The word "certify" is an expression of professional opinion, which is based on his best knowledge, information and belief. As such it constitutes neither a guarantee nor a warranty, expressed or implied.



NORTH
MAP 6356 S.L.R.

Map # 12264
RECEIVED ON FILE
IN TOWN CLERK'S OFFICE
STAMFORD, CONN.
12/31/90
Attest: Ethel K. Fellman
ASST. TOWN CLERK

Approved for submission and filing.
On 12/15/90 By [Signature]
Approved by the Stamford Planning Board
for filing purposes - Not a subdivision.
On 12/21/90 By [Signature]
SECRETARY

UNIT AND PARKING PLAN
AT
130 LENOX PARK
PREPARED FOR
MARBLE PARTNERS
STAMFORD, CT

#024-22