

# Initial Assessment—Photographic Log

**Client:** City of Stamford Mold Task Force

**Job Number:** S-2087-033

**Site:** Westhill High School

<b>Photograph No.:</b> 1	<b>Date:</b> 12/03/18	<b>Direction Taken:</b> —
<b>Description:</b> Black Growth on Diffuser—Room 606		



<b>Photograph No.:</b> 2	<b>Date:</b> 12/03/18	<b>Direction Taken:</b> —
<b>Description:</b> Black Growth on Diffuser—Room 607		

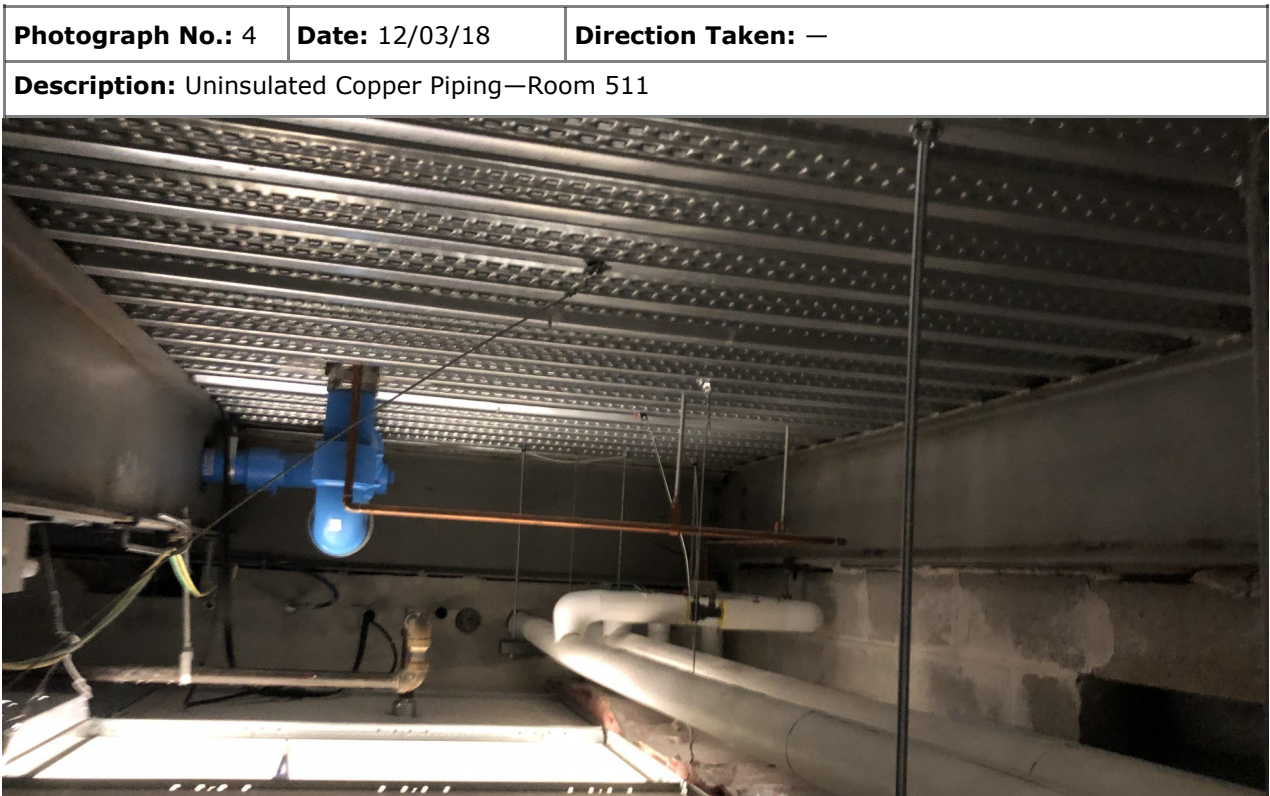


# Initial Assessment—Photographic Log

**Client:** City of Stamford Mold Task Force

**Job Number:** S-2087-033

**Site:** Westhill High School

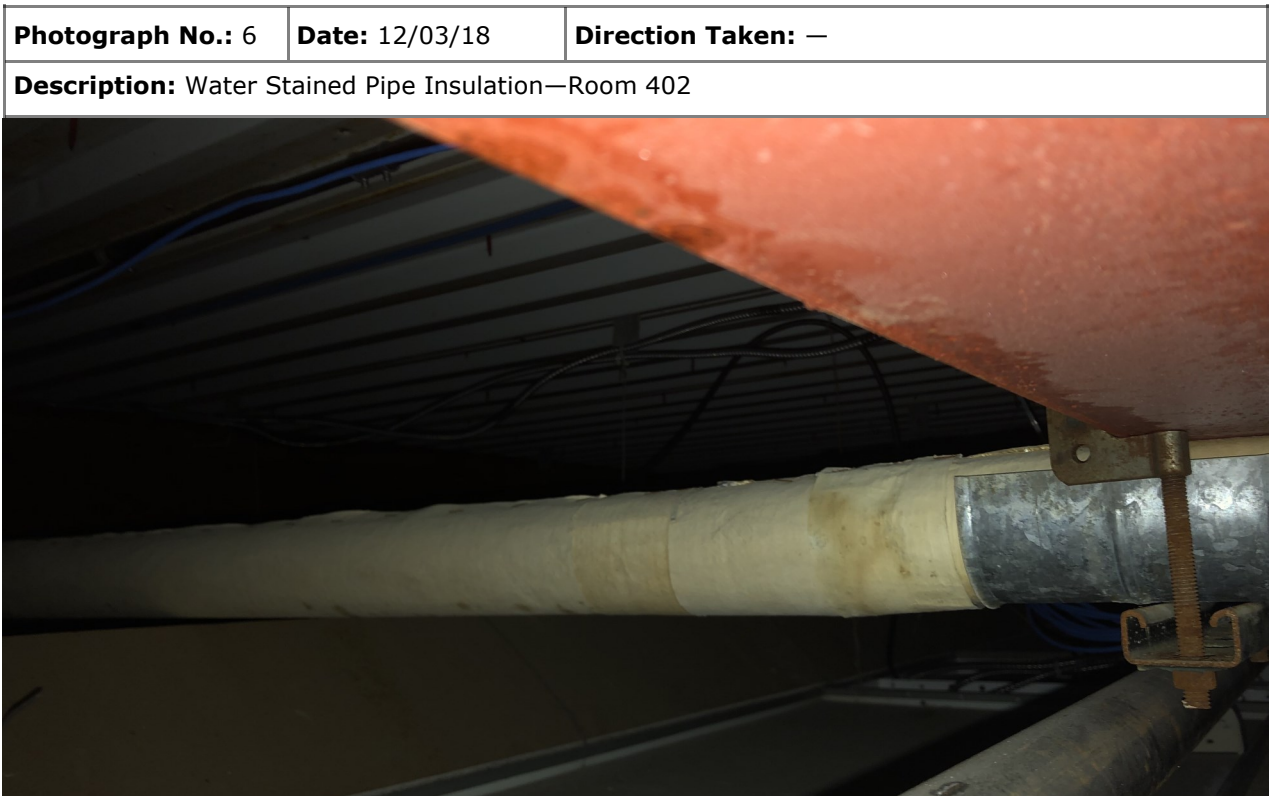


# Initial Assessment—Photographic Log

**Client:** City of Stamford Mold Task Force

**Job Number:** S-2087-033

**Site:** Westhill High School

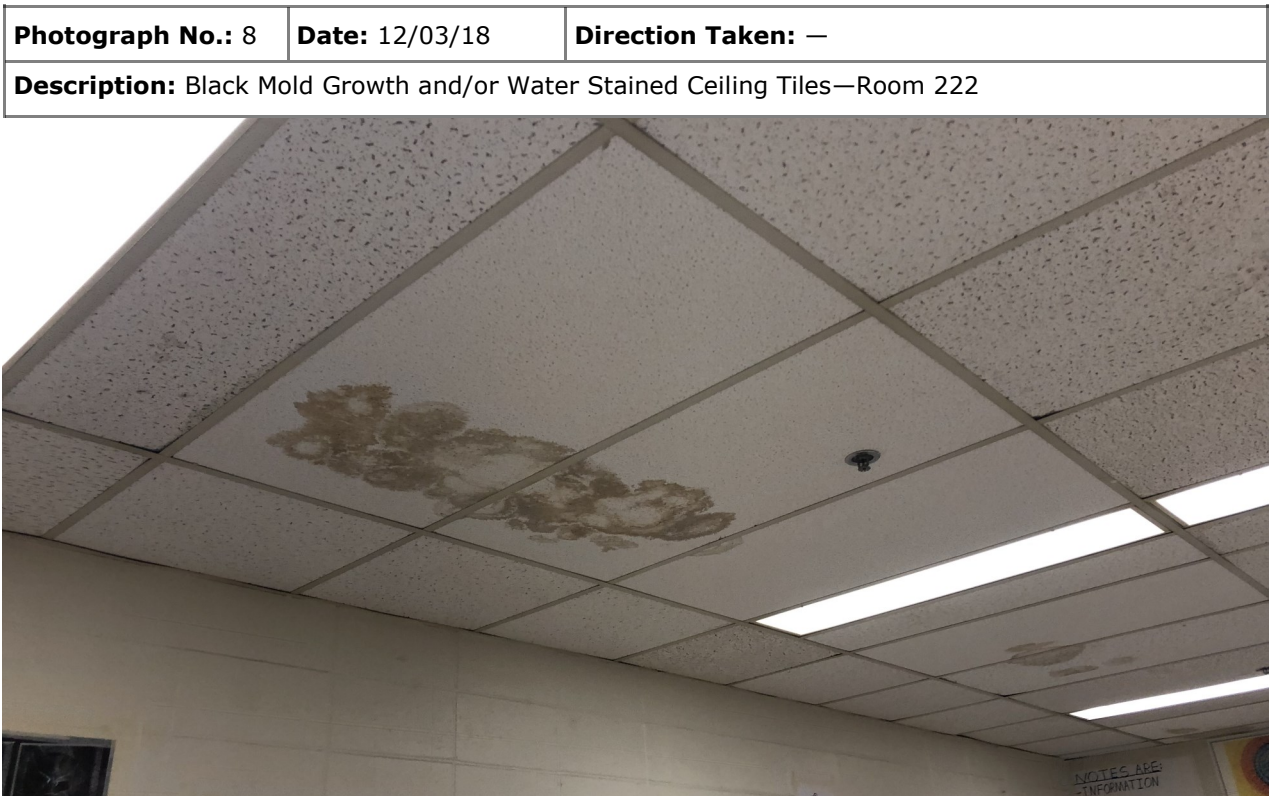
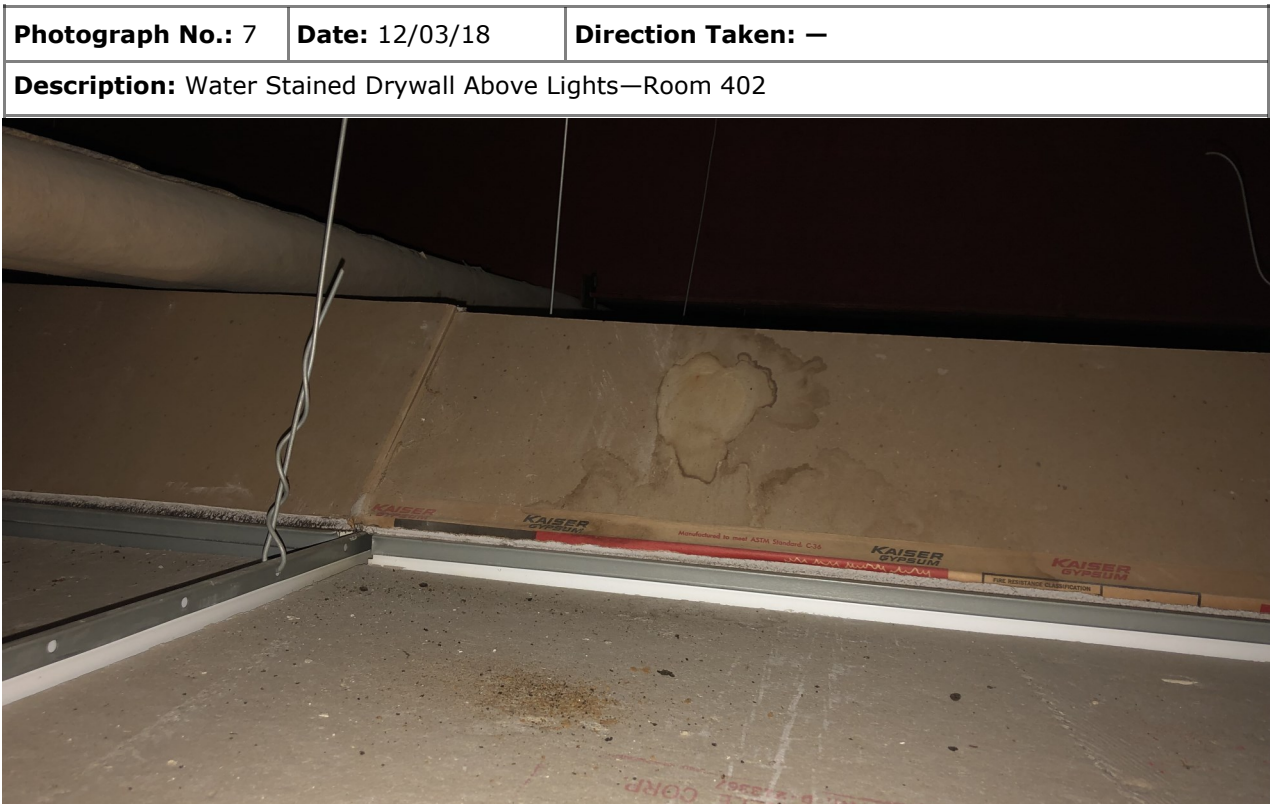


# Initial Assessment—Photographic Log

**Client:** City of Stamford Mold Task Force

**Job Number:** S-2087-033

**Site:** Westhill High School



# Initial Assessment—Photographic Log

**Client:** City of Stamford Mold Task Force

**Job Number:** S-2087-033

**Site:** Westhill High School

