

SSMH #1
RIM EL. = 30.95
8" DUCTILE PIPE INV. IN = 23.25 NW
8" DUCTILE PIPE INV. IN = 23.25 NE
8" DUCTILE PIPE INV. OUT = 22.95 SW

SSMH #2
RIM EL. = 31.06
12" DUCTILE PIPE INV. IN = 22.86 NE
12" DUCTILE PIPE INV. IN = 22.86 W
12" DUCTILE PIPE INV. IN = 22.76 NW
12" DUCTILE PIPE INV. OUT = 22.76 SW

SSMH #3
RIM EL. = 30.82
12" PIPE INV. IN = 21.92 NE
12" DUCTILE F.L. = 21.72 NW TO SE

DMH #1
RIM EL. = 30.80
12" PVC INV. IN = 27.20 NW
18" PVC INV. IN = 25.00 NE
36" RCP INV. IN = 18.40 NE
36" RCP INV. OUT = 18.20 SW

MH #1
RIM EL. = 32.53

MH #2
RIM EL. = 32.36

BENCH MARK
TELEPHONE MANHOLE
TOP OF COVER
EL. = 31.04
(REMOVE COVER)

DMH #2
RIM EL. = 30.87
4" PVC INV. IN = 23.27
18" RCP INV. IN = 21.67 NW
18" RCP INV. OUT = 21.76 SE

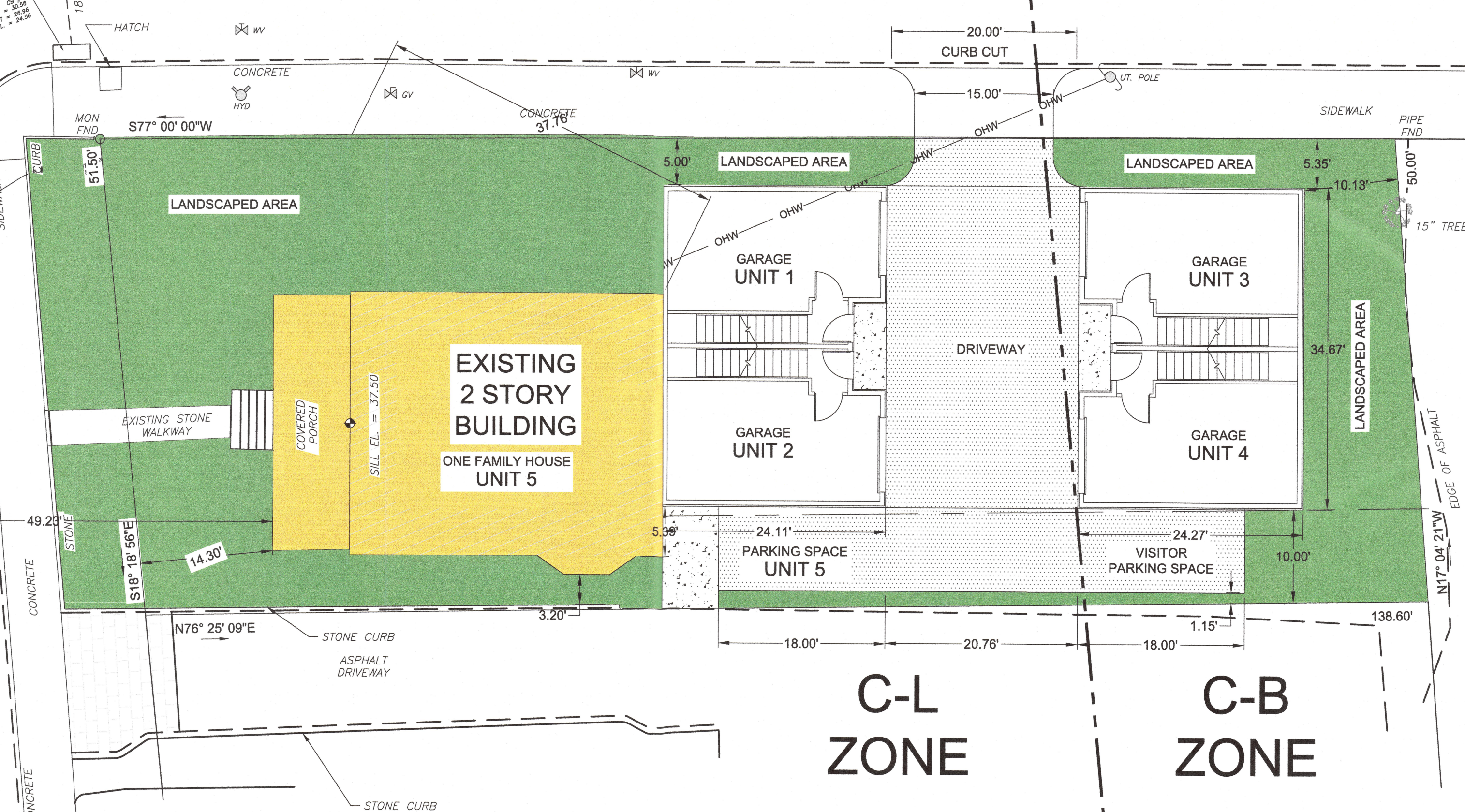
MH #4
RIM EL. = 30.71

MH #5
RIM EL. = 31.39

MH #12
RIM EL. = 31.10

5TH STREET
(50 FT. R.O.W. WIDTH)

SUMMER STREET
(60 FT. R.O.W. WIDTH)



C-L ZONE

C-B ZONE

R-MF ZONE

#004-23

NOTE:
ALL IDEAS, DESIGNS, ARRANGEMENTS AND PLANS INDICATED OR REPRESENTED BY THIS DRAWING ARE OWNED BY, AND ARE THE PROPERTY OF ELENA KALMAN ARCHITECT. NONE OF SUCH IDEAS, DESIGNS, ARRANGEMENTS OR PLANS SHALL BE USED BY OR DISCLOSED TO ANY PURPOSE WHATSOEVER WITHOUT THE WRITTEN PERMISSION OF ELENA KALMAN ARCHITECT.

WRITTEN DIMENSIONS ON THIS DRAWING SHALL HAVE PRECEDENCE OVER SCALED DIMENSIONS. CONTRACTORS SHALL VERIFY AND BE RESPONSIBLE FOR ALL DIMENSIONS AND CONDITIONS ON THE JOB AND THIS OFFICE MUST BE NOTIFIED OF ANY VARIATIONS FROM THE DIMENSIONS AND CONDITIONS SHOWN BY THESE DRAWINGS. SHOP DETAILS MUST BE SUBMITTED TO THIS OFFICE FOR REVIEW BEFORE PROCEEDING WITH FABRICATION.

Date	Issue	
No.	Date	Revision

1911 SUMMER STREET,
STAMFORD, CT

EK
ELENA KALMAN
ARCHITECT

AIA

99 WILD DUCK ROAD
STAMFORD, CT. 06903
TEL. (203) 329-3074
FAX (203) 329-7149

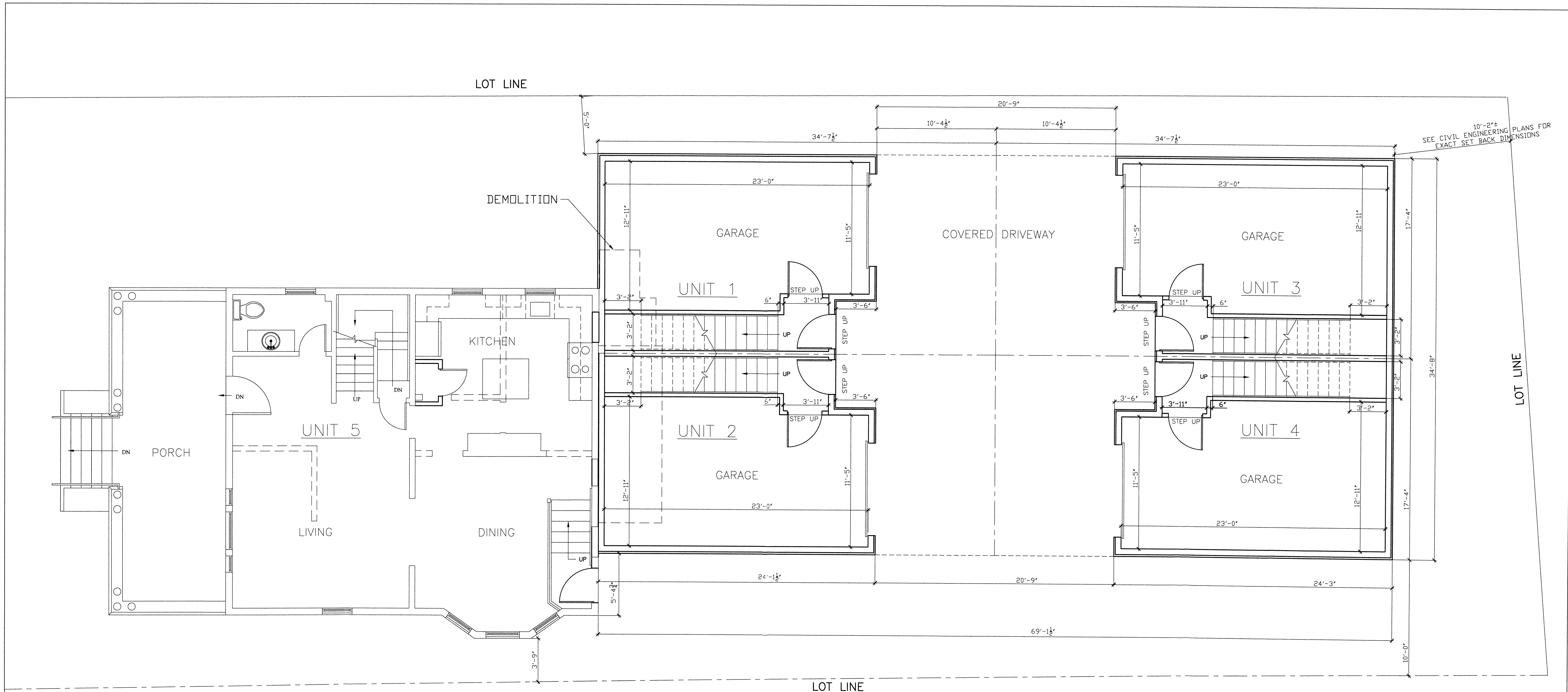
DRAWING TITLE

SITE PLAN

DRAWN BY	EK
CHECKED BY	EK
DATE	10-27-22
SCALE	1"=20'
PROJECT NAME	EK 1911 SITE
DRAWING NUMBER	DRAWING NUMBER

NOTE:
Final development subject to Zoning Board review and approval, and any modifications required by said Zoning Board.

A-01



NOTE:
Final development subject to Zoning Board review and approval, and any modifications required by said Zoning Board.

NOTE:
ALL IDEAS, DESIGNS, ARRANGEMENTS AND PLANS INDICATED OR REPRESENTED BY THIS DRAWING ARE OWNED BY, AND ARE THE PROPERTY OF ELENA KALMAN ARCHITECT AND WERE CREATED, EVOLVED AND DEVELOPED FOR USE ON, AND IN CONNECTION WITH THE SPECIFIED PROJECT, NONE OF SUCH IDEAS, DESIGNS, ARRANGEMENTS OR PLANS SHALL BE USED BY OR DISCLOSED TO ANY PURPOSE WHATSOEVER WITHOUT THE WRITTEN PERMISSION OF ELENA KALMAN ARCHITECT

WRITTEN DIMENSIONS ON THIS DRAWING SHALL HAVE PRECEDENCE OVER SCALED DIMENSIONS. CONTRACTORS SHALL VERIFY AND BE RESPONSIBLE FOR ALL DIMENSIONS AND CONDITIONS ON THE JOB AND THIS OFFICE MUST BE NOTIFIED OF ANY VARIATIONS FROM THE DIMENSIONS AND CONDITIONS SHOWN BY THESE DRAWINGS. SHOP DETAILS MUST BE SUBMITTED TO THIS OFFICE FOR REVIEW BEFORE PROCEEDING WITH FABRICATION.

Date		Issue
No.	Date	Revision

1911 SUMMER STREET, STAMFORD, CT

EK
ELENA KALMAN ARCHITECT

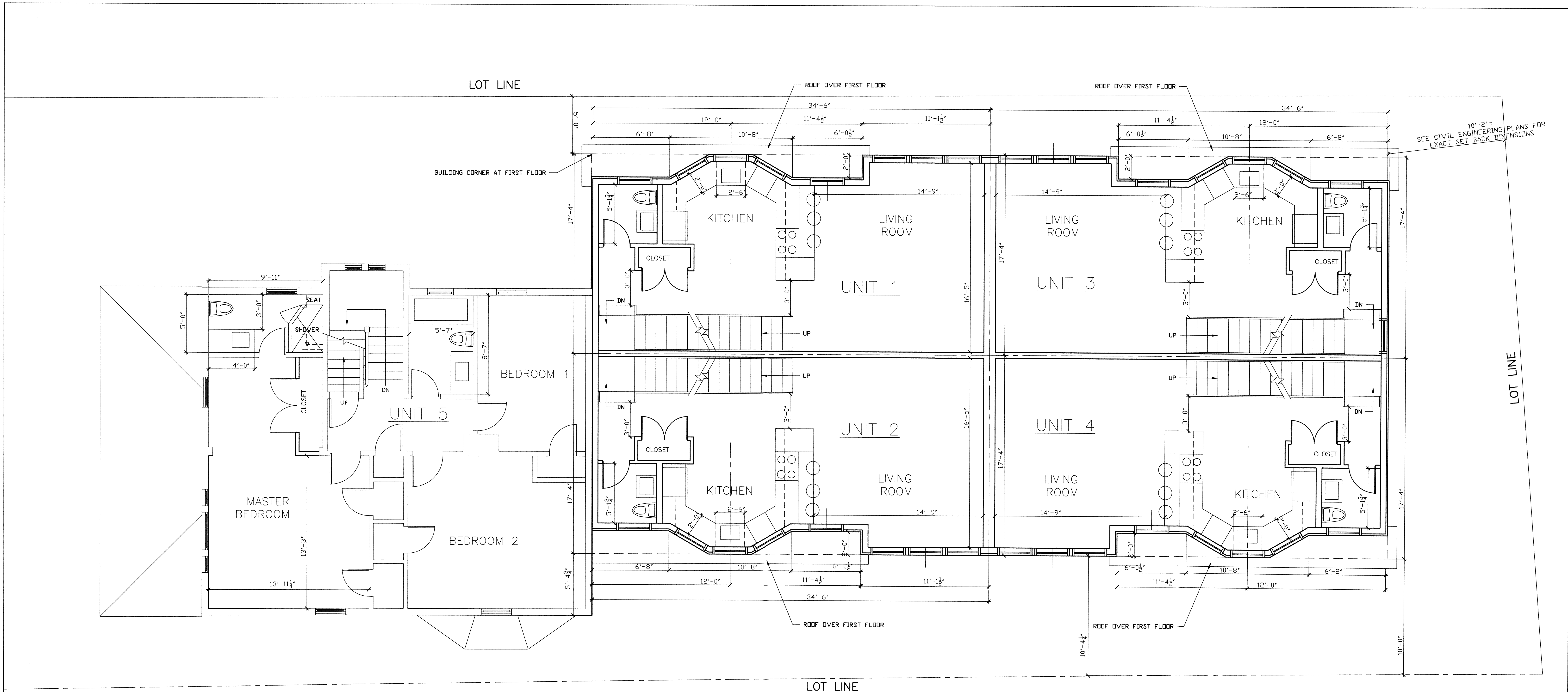
AIA

99 WILD DUCK ROAD
STAMFORD, CT, 06903
TEL. (203) 329-3074
FAX (203) 329-7149

DRAWING TITLE

FIRST FLOOR PLAN

DRAWN BY: EK
CHECKED BY: EK
DATE: 10-27-22
SCALE: 1/4" = 1'-0"
PROJECT NAME: 11911 SUMMER ST
DRAWING NUMBER: **A-101**



10'-2"±
SEE CIVIL ENGINEERING PLANS FOR
EXACT SET BACK DIMENSIONS

NOTE:
Final development subject to Zoning Board
review and approval, and any modifications
required by said Zoning Board.

NOTE:
ALL IDEAS, DESIGNS, ARRANGEMENTS AND PLANS INDICATED
OR REPRESENTED BY THIS DRAWING ARE OWNED BY, AND ARE
THE PROPERTY OF ELENA KALMAN ARCHITECT
WERE CREATED, EVOLVED AND DEVELOPED FOR USE ON, AND
IN CONNECTION WITH THE SPECIFIED PROJECT, NONE OF SUCH
IDEAS, DESIGNS, ARRANGEMENTS OR PLANS SHALL BE USED
BY OR DISCLOSED TO ANY PURPOSE WHATSOEVER WITHOUT
THE WRITTEN PERMISSION OF ELENA KALMAN ARCHITECT

WRITTEN DIMENSIONS ON THIS DRAWING SHALL HAVE
PRECEDENCE OVER SCALED DIMENSIONS. CONTRACTORS SHALL
VERIFY AND BE RESPONSIBLE FOR ALL DIMENSIONS AND
CONDITIONS ON THE JOB AND THIS OFFICE MUST BE NOTIFIED
OF ANY VARIATIONS FROM THE DIMENSIONS AND CONDITIONS
SHOWN BY THESE DRAWINGS. SHOP DETAILS MUST BE
SUBMITTED TO THIS OFFICE FOR REVIEW BEFORE PROCEEDING
WITH FABRICATION.

Date	Issue	
No.	Date	Revision

1911 SUMMER
STREET,
STAMFORD, CT

EK
ELENA
KALMAN
ARCHITECT

AIA

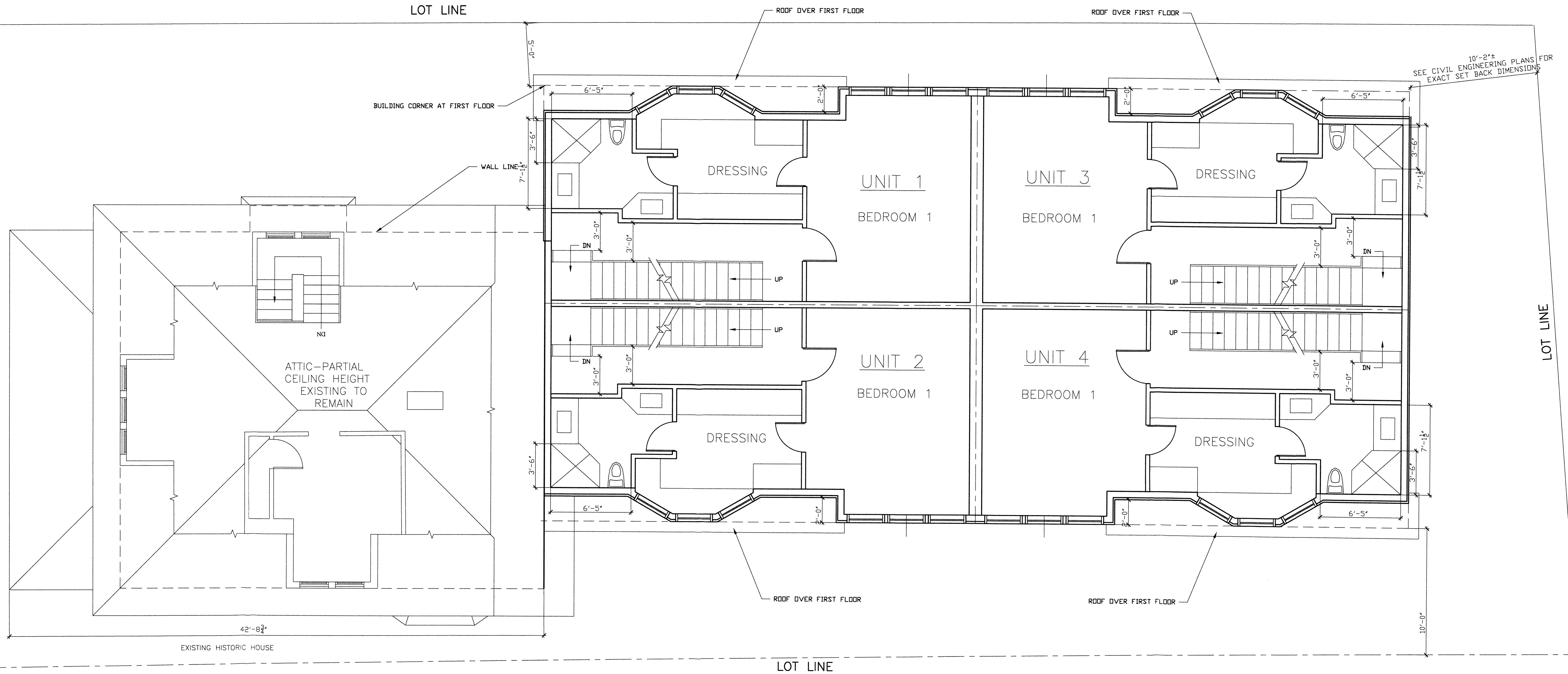
99 WILD DUCK ROAD
STAMFORD, CT. 06903
TEL. (203) 329-3074
FAX (203) 329-7149

DRAWING TITLE

**SECOND FLOOR
PLAN**

DRAWN BY: EK
CHECKED BY: EK
DATE: 10-27-22
SCALE: 1/4" = 1'-0"
PROJECT NAME: 1911 SUMMER ST
DRAWING NUMBER:

A-102



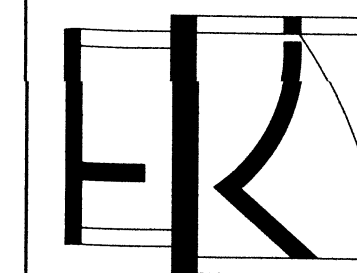
NOTE:
Final development subject to Zoning Board review and approval, and any modifications required by said Zoning Board.

NOTE:
ALL IDEAS, DESIGNS, ARRANGEMENTS AND PLANS INDICATED OR REPRESENTED BY THIS DRAWING ARE OWNED BY, AND ARE THE PROPERTY OF ELENA KALMAN ARCHITECT. IF ANY OTHER IDEAS, DESIGNS, ARRANGEMENTS OR PLANS WERE CREATED, EVOLVED AND DEVELOPED FOR USE ON, AND IN CONNECTION WITH THE SPECIFIED PROJECT, NONE OF SUCH IDEAS, DESIGNS, ARRANGEMENTS OR PLANS SHALL BE USED BY OR DISCLOSED TO ANY PURPOSE WHATSOEVER WITHOUT THE WRITTEN PERMISSION OF ELENA KALMAN ARCHITECT.

WRITTEN DIMENSIONS ON THIS DRAWING SHALL HAVE PRECEDENCE OVER SCALED DIMENSIONS. CONTRACTORS SHALL VERIFY AND BE RESPONSIBLE FOR ALL DIMENSIONS AND CONDITIONS ON THE JOB AND THIS OFFICE MUST BE NOTIFIED OF ANY VARIATIONS FROM THE DIMENSIONS AND CONDITIONS SHOWN BY THESE DRAWINGS. SHOP DETAILS MUST BE SUBMITTED TO THIS OFFICE FOR REVIEW BEFORE PROCEEDING WITH FABRICATION.

Date	Issue	
No.	Date	Revision

1911 SUMMER STREET, STAMFORD, CT



ELENA KALMAN ARCHITECT

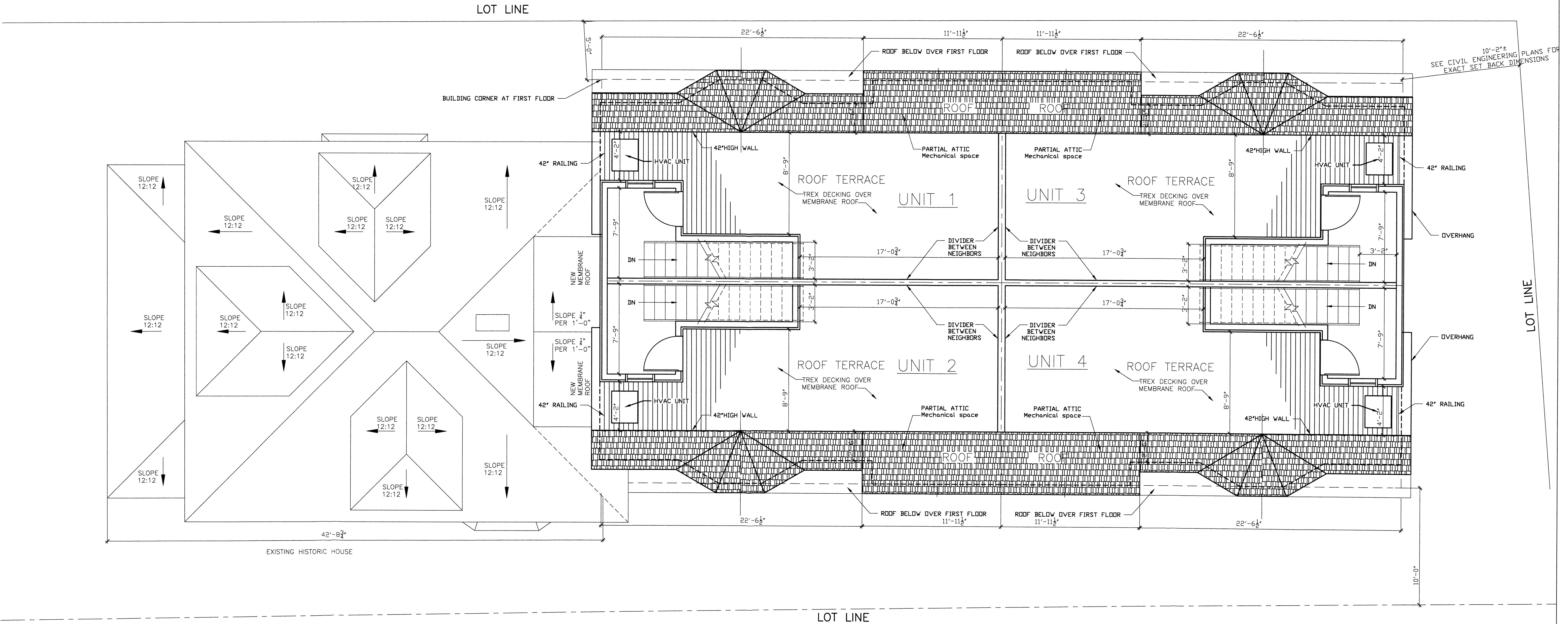
AIA
99 WILD DUCK ROAD
STAMFORD, CT, 06903
TEL: (203) 329-3074
FAX: (203) 329-7149



DRAWING TITLE
THIRD FLOOR PLAN

DRAWN BY: EK
CHECKED BY: EK
DATE: 10-27-22
SCALE: 1/4" = 1'-0"
PROJECT NAME: 11911 SUMMER ST
DRAWING NUMBER:

A-103



NOTE:
Final development subject to Zoning Board review and approval, and any modifications required by said Zoning Board.

NOTE:
ALL IDEAS, DESIGNS, ARRANGEMENTS AND PLANS INDICATED OR REPRESENTED BY THIS DRAWING ARE OWNED BY, AND ARE THE PROPERTY OF ELENA KALMAN ARCHITECT. ANY REUSE, REPRODUCTION, OR DISCLOSURE OF ANY PART OF THIS DRAWING FOR ANY PURPOSE WITHOUT THE WRITTEN PERMISSION OF ELENA KALMAN ARCHITECT IS STRICTLY PROHIBITED.

WRITTEN DIMENSIONS ON THIS DRAWING SHALL HAVE PRECEDENCE OVER SCALED DIMENSIONS. CONTRACTORS SHALL VERIFY AND BE RESPONSIBLE FOR ALL DIMENSIONS AND CONDITIONS ON THE JOB AND THIS OFFICE MUST BE NOTIFIED OF ANY VARIATIONS FROM THE DIMENSIONS AND CONDITIONS SHOWN BY THESE DRAWINGS. SHOP DETAILS MUST BE SUBMITTED TO THIS OFFICE FOR REVIEW BEFORE PROCEEDING WITH FABRICATION.

Date	Issue	
No.	Date	Revision

1911 SUMMER STREET, STAMFORD, CT

EK
ELENA KALMAN ARCHITECT

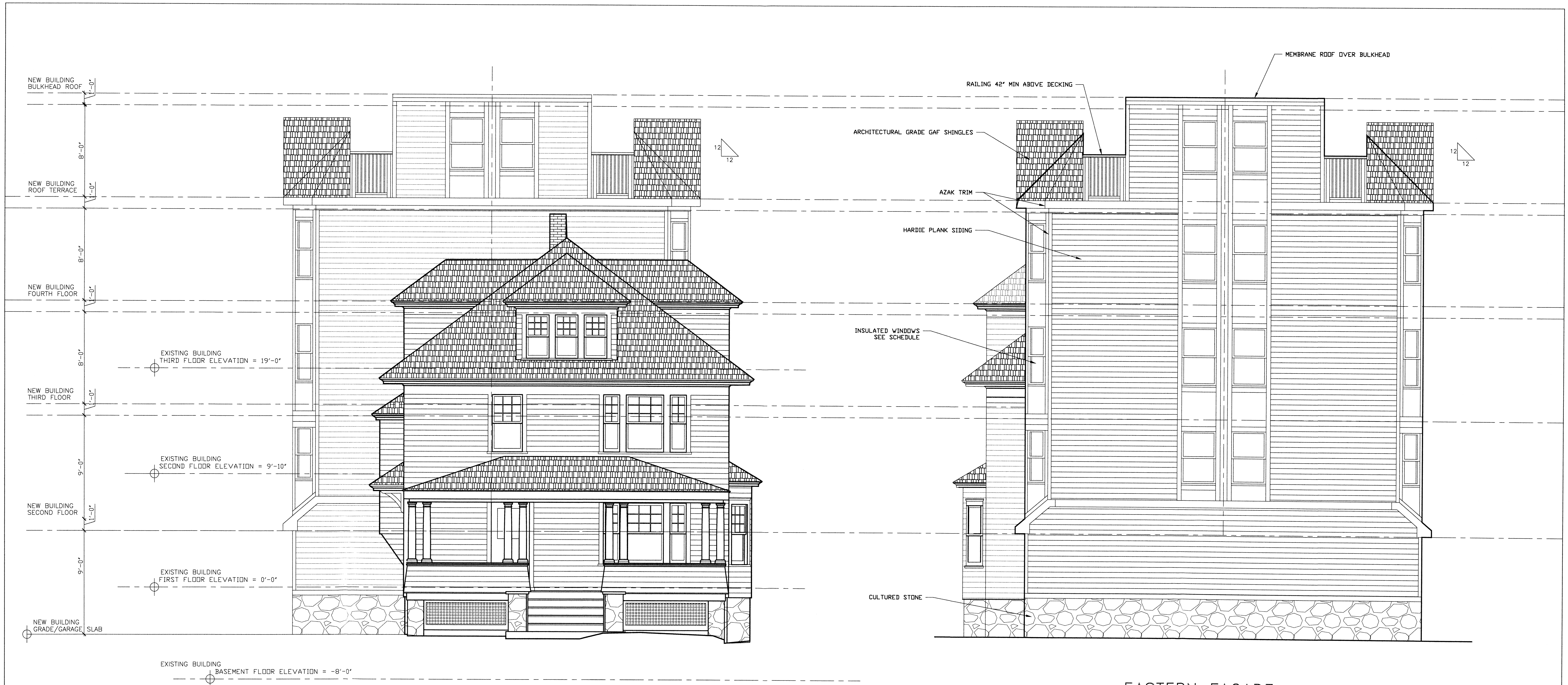
AIA

99 WILD DUCK ROAD
STAMFORD, CT 06903
TEL. (203) 329-3074
FAX (203) 329-7149

DRAWING TITLE

ROOF PLAN

DRAWN BY: EK
CHECKED BY: EK
DATE: 10-27-22
SCALE: 1/4" = 1'-0"
PROJECT NAME: 11911 SUMMER ST
DRAWING NUMBER: A-105



SUMMER STREET FACADE
(WESTERN)

EASTERN FACADE

NOTE:
Final development subject to Zoning Board review and approval, and any modifications required by said Zoning Board.

NOTE:
ALL IDEAS, DESIGNS, ARRANGEMENTS AND PLANS INDICATED OR REPRESENTED BY THIS DRAWING ARE OWNED BY, AND ARE THE PROPERTY OF ELENA KALMAN ARCHITECT. NONE OF SUCH IDEAS, DESIGNS, ARRANGEMENTS OR PLANS SHALL BE USED BY OR DISCLOSED TO ANY PURPOSE WHATSOEVER WITHOUT THE WRITTEN PERMISSION OF ELENA KALMAN ARCHITECT.

WRITTEN DIMENSIONS ON THIS DRAWING SHALL HAVE PRECEDENCE OVER SCALED DIMENSIONS. CONTRACTORS SHALL VERIFY AND BE RESPONSIBLE FOR ALL DIMENSIONS AND CONDITIONS ON THE JOB AND THIS OFFICE MUST BE NOTIFIED OF ANY VARIATIONS FROM THE DIMENSIONS AND CONDITIONS SHOWN BY THESE DRAWINGS. SHOP DETAILS MUST BE SUBMITTED TO THIS OFFICE FOR REVIEW BEFORE PROCEEDING WITH FABRICATION.

Date	Issue	
No.	Date	Revision

EK
ELENA KALMAN
ARCHITECT

AIA

99 WILD DUCK ROAD
STAMFORD, CT. 06902
TEL. (203) 329-3074
WWW.KALMANDESIGN.CO

PROJECT NAME

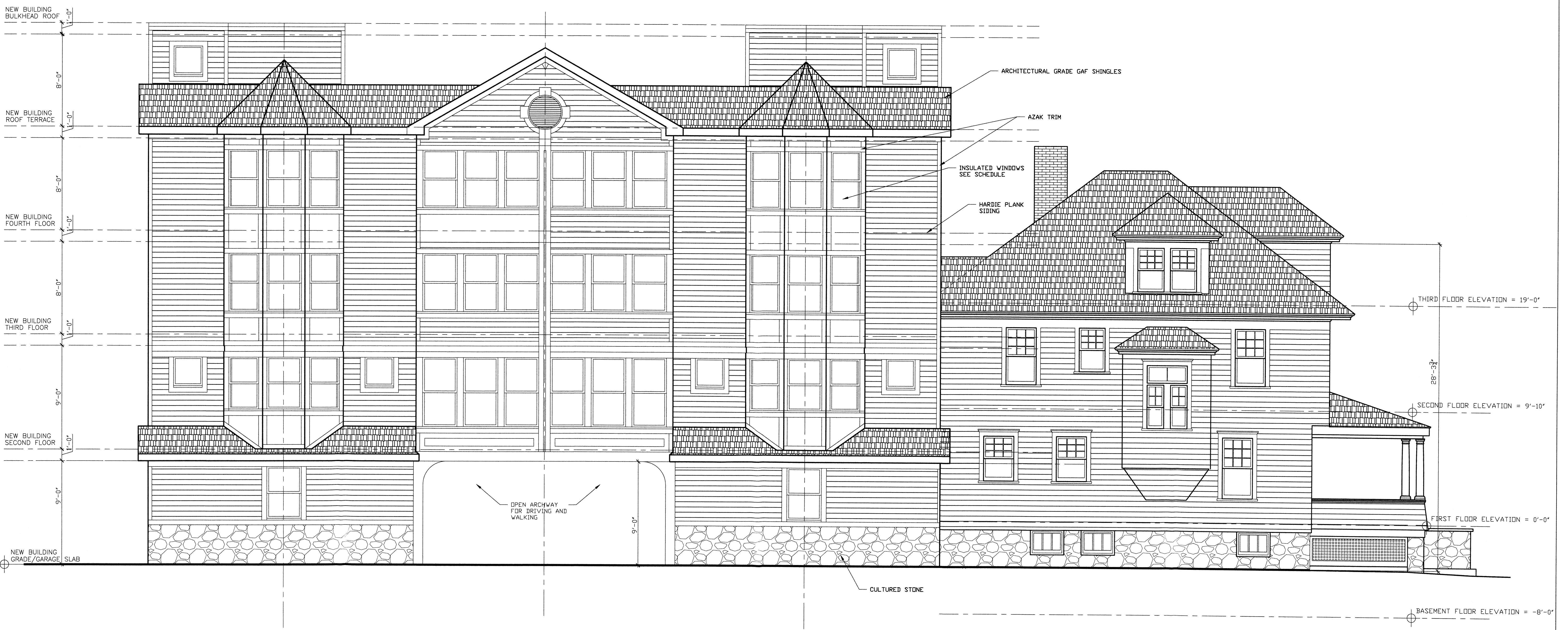
1911 SUMMER STREET,
STAMFORD, CT

DRAWING TITLE

SUMMER STREET FACADE
(WESTERN)
AND EASTERN FACADE

DRAWN BY: EK
CHECKED BY: EK
DATE: 10-27-22
SCALE: 1/4" = 1'-0"
PROJECT NAME: 1911 SUMMER ST
DRAWING NUMBER

A-201



FIFTH STREET ELEVATION

NOTE:
Final development subject to Zoning Board review and approval, and any modifications required by said Zoning Board.

NOTE:
ALL IDEAS, DESIGNS, ARRANGEMENTS AND PLANS INDICATED OR REPRESENTED BY THIS DRAWING ARE OWNED BY, AND ARE THE PROPERTY OF ELENA KALMAN ARCHITECT. ANY REUSE, REPRODUCTION, OR DISSEMINATION OF ANY PART OF THIS DRAWING WITHOUT THE WRITTEN PERMISSION OF ELENA KALMAN ARCHITECT IS STRICTLY PROHIBITED.

WRITTEN DIMENSIONS ON THIS DRAWING SHALL HAVE PRECEDENCE OVER SCALED DIMENSIONS. CONTRACTORS SHALL VERIFY AND BE RESPONSIBLE FOR ALL DIMENSIONS AND CONDITIONS ON THE JOB AND THIS OFFICE MUST BE NOTIFIED OF ANY VARIATIONS FROM THE DIMENSIONS AND CONDITIONS SHOWN BY THESE DRAWINGS. SHOP DETAILS MUST BE SUBMITTED TO THIS OFFICE FOR REVIEW BEFORE PROCEEDING WITH FABRICATION.

No.	Date	Issue	Revision

EK
ELENA KALMAN
ARCHITECT

AIA

99 WILD DUCK ROAD
STAMFORD, CT 06901
TEL. (203) 329-3074
WWW.KALMANDSIGN.COM

PROJECT NAME

1911 SUMMER STREET, STAMFORD, CT

DRAWING TITLE

FIFTH STREET FACADE (NORTHERN)

DRAWN BY: EK
CHECKED BY: EK
DATE: 10-27-22
SCALE: 1/4" = 1'-0"
PROJECT NAME: 11911 SUMMER ST
DRAWING NUMBER: A-202



SOUTHERN ELEVATION

NOTE:
Final development subject to Zoning Board review and approval, and any modifications required by said Zoning Board.

NOTE:
ALL IDEAS, DESIGNS, ARRANGEMENTS AND PLANS INDICATED OR REPRESENTED BY THIS DRAWING ARE OWNED BY, AND ARE THE PROPERTY OF ELENA KALMAN ARCHITECT. NONE OF SUCH IDEAS, DESIGNS, ARRANGEMENTS OR PLANS SHALL BE USED BY OR DISCLOSED TO ANY PURPOSE WHATSOEVER WITHOUT THE WRITTEN PERMISSION OF ELENA KALMAN ARCHITECT.

WRITTEN DIMENSIONS ON THIS DRAWING SHALL HAVE PRECEDENCE OVER SCALED DIMENSIONS. CONTRACTORS SHALL VERIFY AND BE RESPONSIBLE FOR ALL DIMENSIONS AND CONDITIONS ON THE JOB AND THIS OFFICE MUST BE NOTIFIED OF ANY VARIATIONS FROM THE DIMENSIONS AND CONDITIONS SHOWN BY THESE DRAWINGS. SHOP DETAILS MUST BE SUBMITTED TO THIS OFFICE FOR REVIEW BEFORE PROCEEDING WITH FABRICATION.

Date	Issue	
No.	Date	Revision

PROJECT NAME
1911 SUMMER STREET, STAMFORD, CT

DRAWING TITLE
SOUTHERN FACADE

DRAWN BY: EK
CHECKED BY: EK
DATE: 10-27-22
SCALE: 1/4" = 1'-0"
PROJECT NAME: 1911 SUMMER ST
DRAWING NUMBER: **A-203**