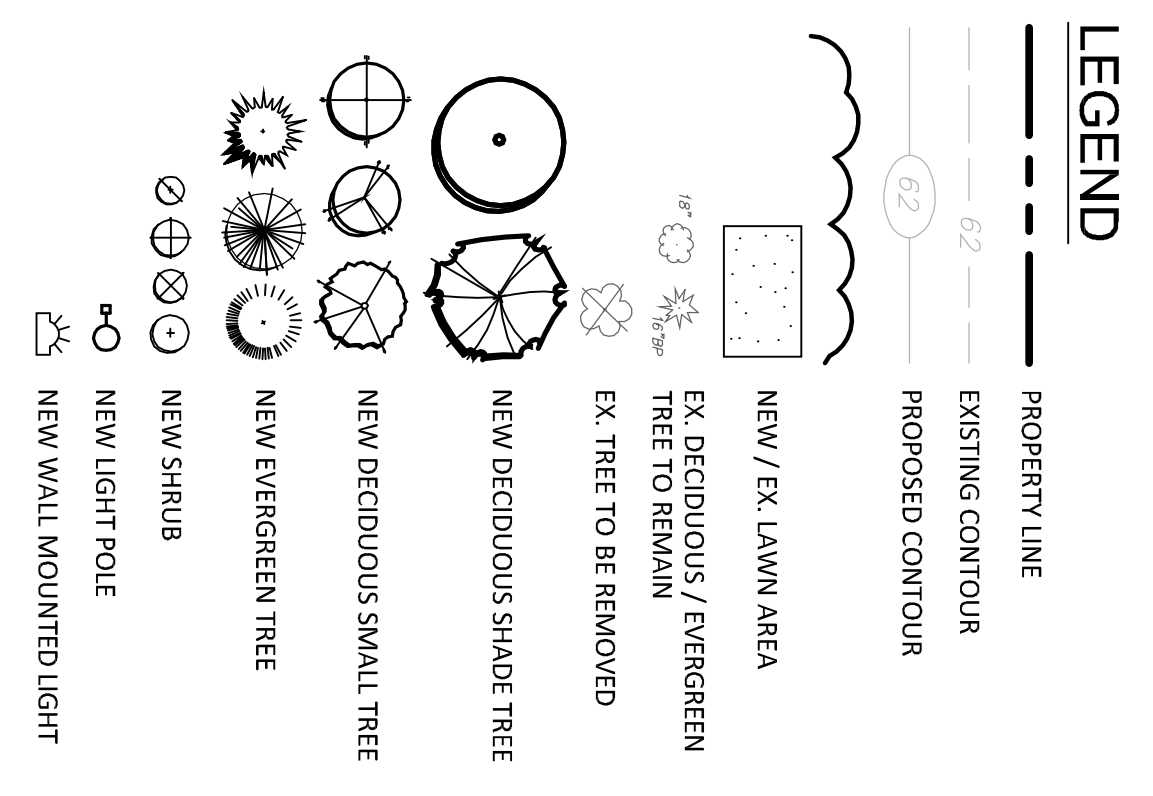


- NOTES:
1. LIGHT POLE AND BOLLARD LIGHT BY PHILIPS LIGHTING.
 2. FIXTURES SHALL BE BLACK IN COLOR.
 3. INSTALL PER THE MANUFACTURER'S RECOMMENDATIONS.

POLE AND BOLLARD LIGHTS

N.T.S.



LANDSCAPE LIGHTING NOTES:

1. SITE LIGHTING INFORMATION AND LIGHTING PLANS PREPARED BY ENVIRONMENTAL LAND SOLUTIONS, LLC ARE DESIGNED FOR GENERAL LANDSCAPE AESTHETIC PURPOSES ONLY. LIGHTING INFORMATION SHOWN ON THIS PLAN SHALL NOT BE USED FOR SECURITY OR SAFETY PURPOSES.
2. LOCATION AND TYPE OF LIGHT FIXTURES ARE TYPICAL AND MAY VARY BASED ON ACTUAL FIELD CONDITIONS, SITE AND ARCHITECTURAL PLAN REVISIONS, USE OF EXISTING LIGHTING (IF ANY), NEW AND/OR MANUFACTURER'S, AESTHETICS, AND CONSULTATIONS WITH LIGHTING CONSULTANT AND/OR MANUFACTURER.
3. THIS PLAN ASSUMES THAT THE BUILDING WILL HAVE WALL MOUNTED FIXTURES (BY OTHERS) TO LIGHT EXTERIOR DOORS.
4. INSTALL LIGHT FIXTURES AS RECOMMENDED BY THE MANUFACTURER.
5. LIGHT POLES LOCATED WITHIN LANDSCAPE AND PEDESTRIAN AREAS SHALL BE ON A BASE FLUSH WITH GRADE LOCATED A MINIMUM OF 3' FROM THE EDGE OF VEHICLE PAVEMENT IF FEASIBLE.

REVISIONS:	DRAWING TITLE: LANDSCAPE PLAN
	PROJECT: 23 BARRY PLACE STAMFORD, CONNECTICUT
	SCALE: DATE: 12.14.22
<p>ENVIRONMENTAL LAND SOLUTIONS, LLC Landscape Architecture and Environmental Planning 8 KNIGHT STREET, SUITE 203 NORWALK, CONNECTICUT 06851 Tel: (203) 855-7879 Fax: (203) 855-7836 info@elslinc.net www.elslinc.net</p>	
<p>ENVIRONMENTAL ARCHITECTURE ARCHITECTURE EIS PLANNING</p>	
<p>SCALE: 1"=20' DRAWING NO.: LP.2</p>	

