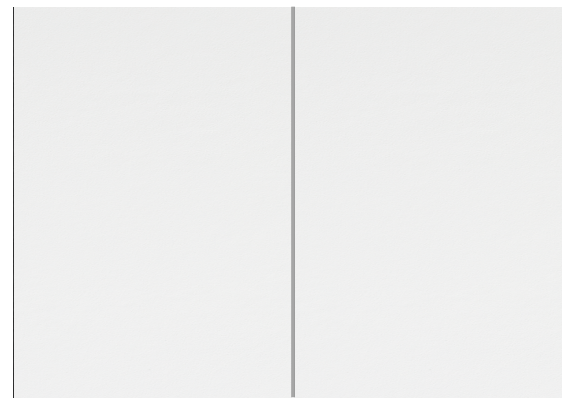
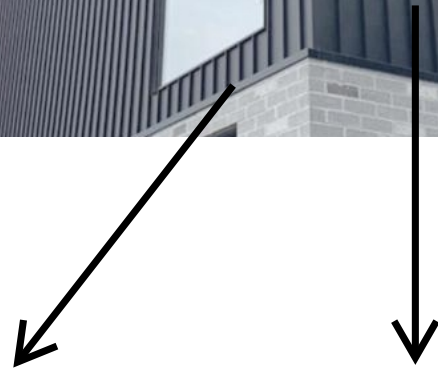


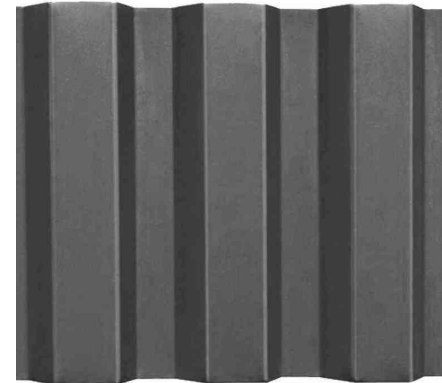
# EXTERIOR MATERIALS - RESIDENTIAL



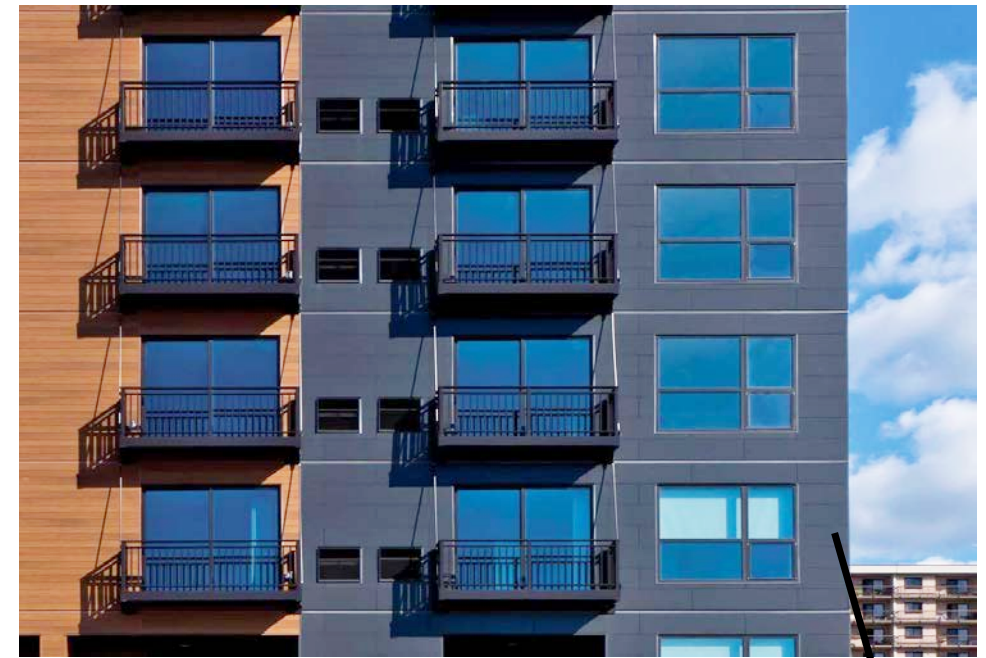
1 - FIBER CEMENT PANEL



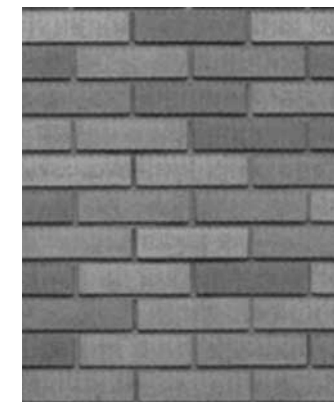
2 - DARK GRAY METAL TRIM



3 - DARK GRAY METAL CORRUGATED SIDING



7 - GRAY FIBER CEMENT SIDING



4 - GRAY CMU VENEER BLEND

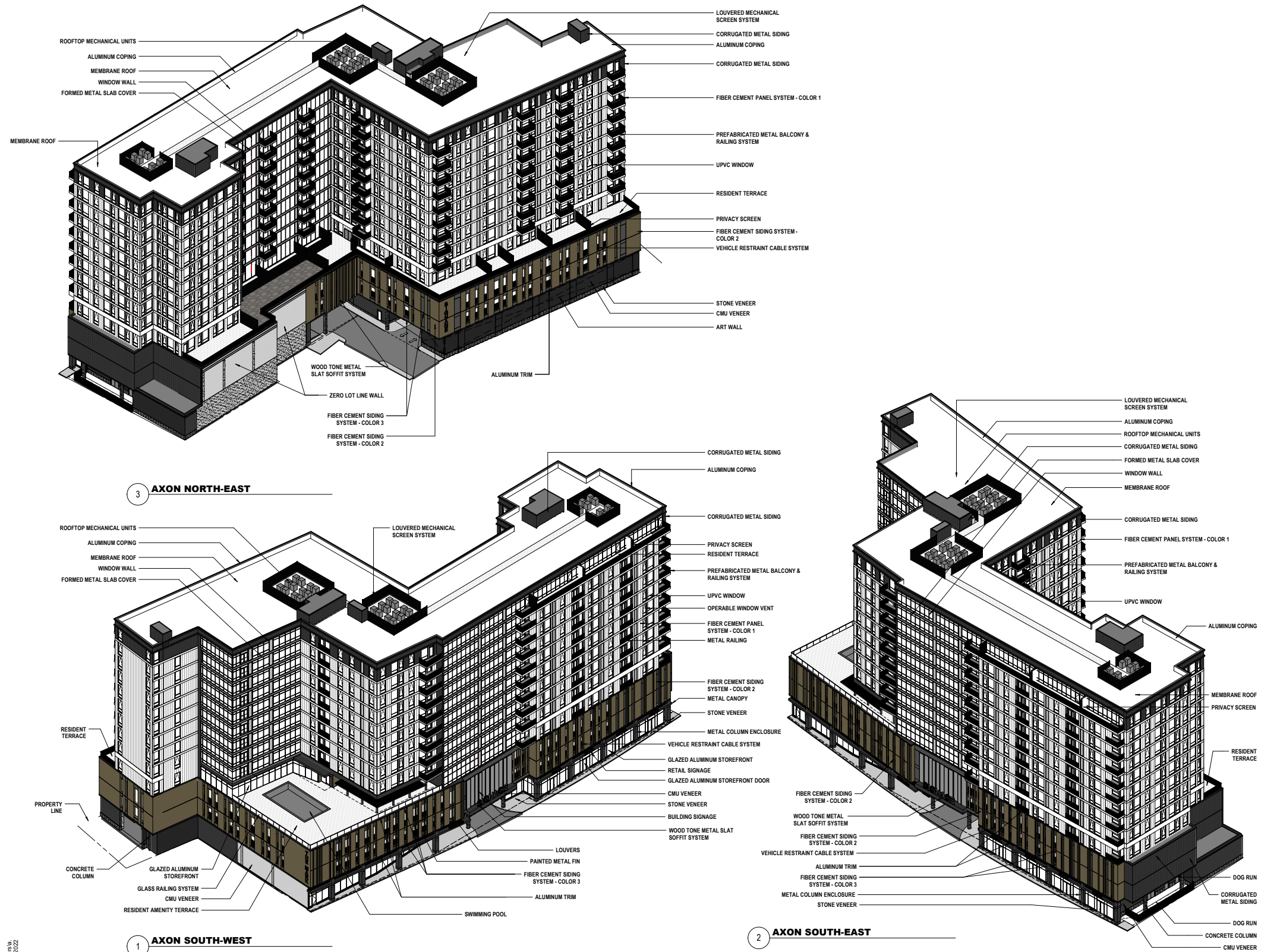


5 - GRAY STONE VENEER

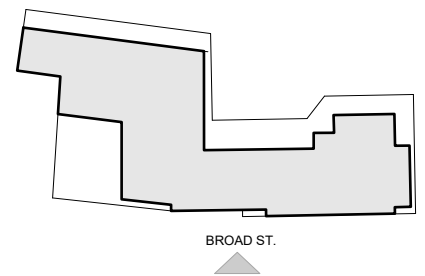
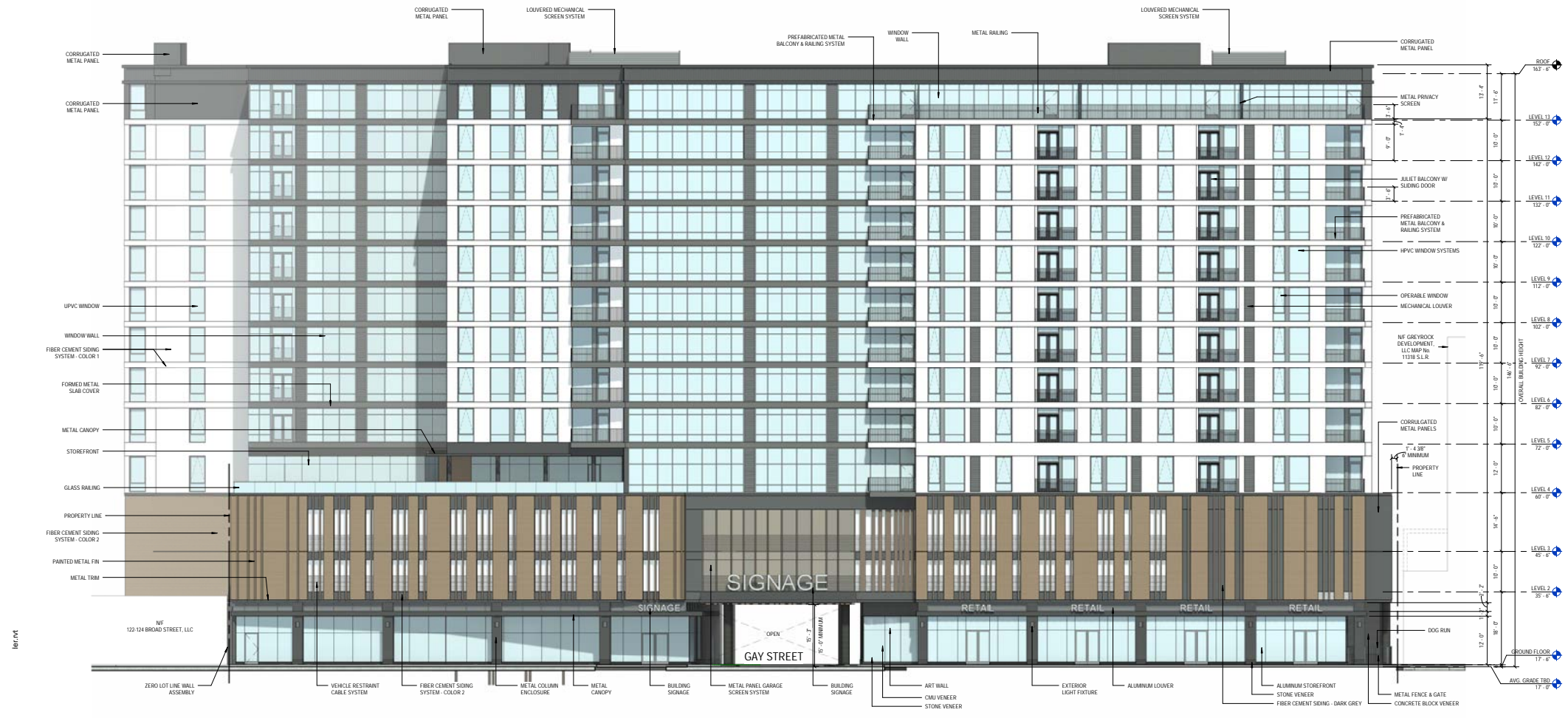


6 - WOOD LOOK FIBER CEMENT SIDING

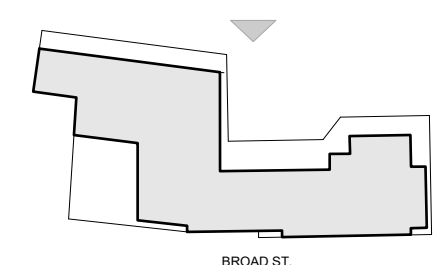
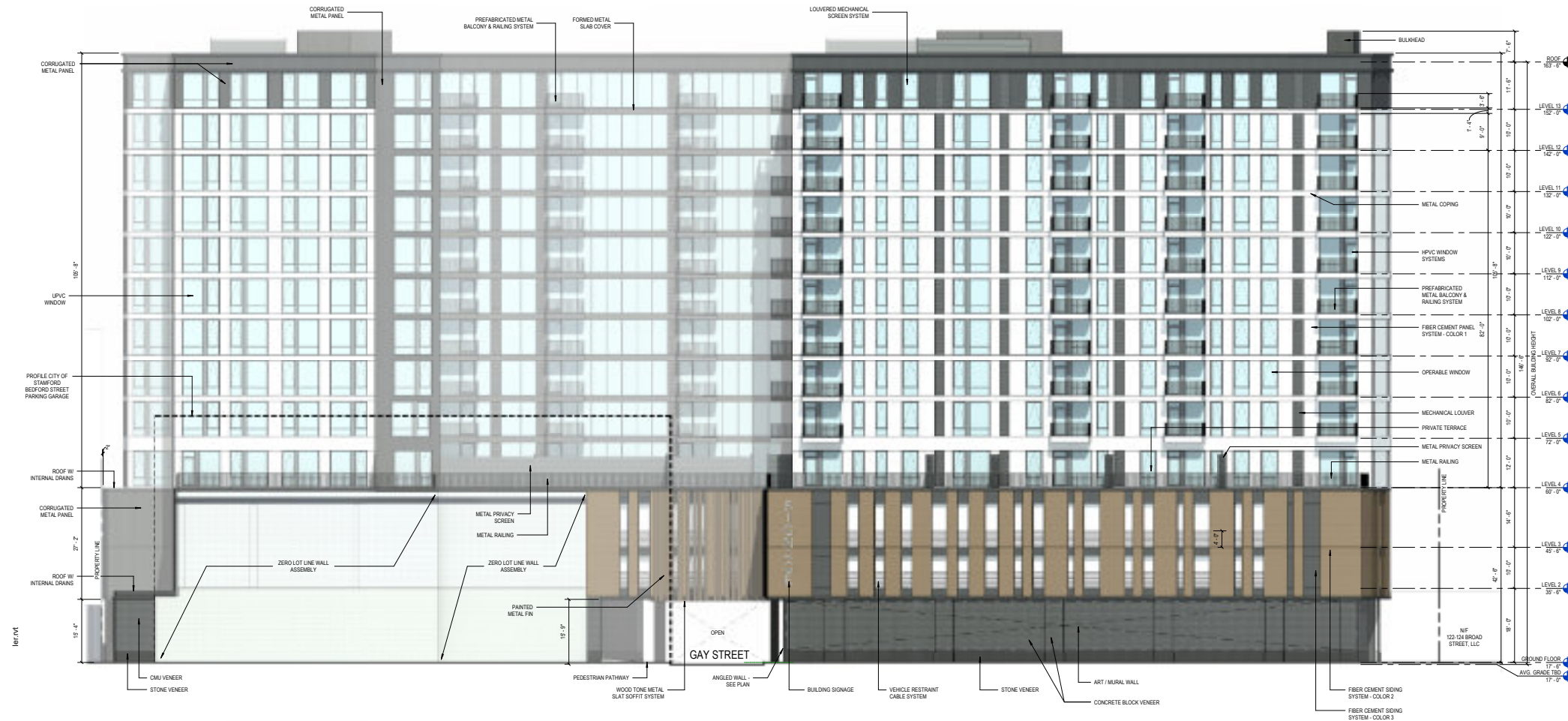
# Building Elevations



# Building Elevations



# Building Elevations



# Building Elevations

