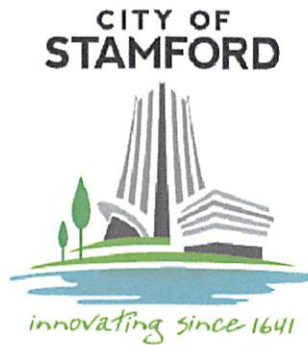


MAYOR
CAROLINE SIMMONS

DIRECTOR OF OPERATIONS
MATTHEW QUINONES
Email:
mquinone@stamfordct.gov



ACTING BUREAU CHIEF
FRANK W. PETISE, P.E.
Email: fpetise@stamfordct.gov

March 25, 2022

Mr. Mark Vertucci
Fuss & O'Neill
146 Hartford Road
Manchester, CT 06040

RE: **SAFE ROUTES TO SCHOOLS AND
ACCESS TO PUBLIC TRANSIT FACILITIES
RFQ # 846**

Dear Mr. Vertucci:

The selection Committee would like to express its appreciation to your team for their efforts in preparing a response to the SAFE ROUTES TO SCHOOLS AND ACCESS TO PUBLIC TRANSIT FACILITIES, RFQ # 846, and for the presentation of March 10, 2022.

We are pleased to inform you that the selection committee unanimously recommended that your team to perform and complete the tasks related to and designated as school areas outlined in in the RFQ # 846 as Figure 1. West Hill High School and Roxbury School and Figure 3. Newfield Elementary and AITE High School.

You shall use existing aerial maps for design purposes. The filed survey shall be done only where aerial information is not adequate to develop the design. Intent is to use available information rather than expending available finds in collecting information.

It is suggested that you conduct a field visit prior to preparing a detailed scope of work related to these school areas in developing a meaningful estimate of and man-hours required to complete the project successfully. A two-week field review period and a week to justify your task efforts is provided in developing a task based man hours, and estimates to complete the tasks detailed in the RFQ. All documentation shall be submitted to my attention by 11:00 A.M on April 18, 2022.

RFQ # 846 FUSS and O'Neill

Also, you should be aware of that this Project shall comply with Federal and State grants for implementing the project.

Should you have any questions, please feel free to contact me at (203) 977-4124.

Thank you.

Sincerely,

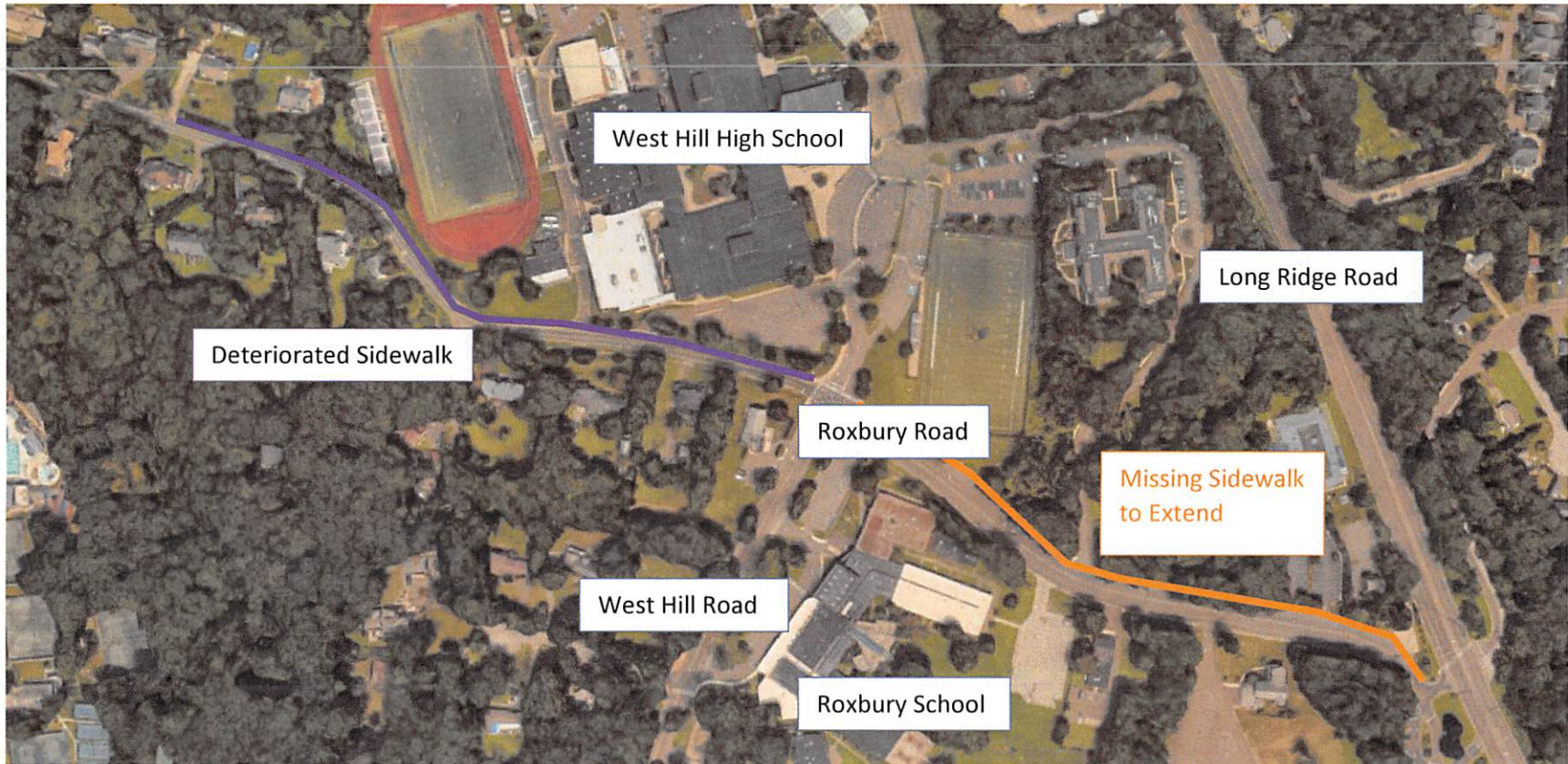
A handwritten signature in blue ink, appearing to read 'Frank Petise', with a stylized flourish at the end.

Frank Petise, P.E.,
Bureau Chief

Cc: Erik Larson, Purchasing Manager
Domenick Tramontozzi, Sr. Construction Manager
Mani Poola, Traffic Engineer

Encl: Figure 1. West Hill High School and Roxbury School
Figure 3. Newfield Elementary and AITE High School

Figure 1: West Hill High School and Roxbury School Pedestrian Access Improvements Concept Plan



Color Key

- Missing Sidewalk to Extend
- Deteriorated Sidewalk

Figure 3: Newfield Elementary and AITE High School Pedestrian Access Improvements Concept Plan

