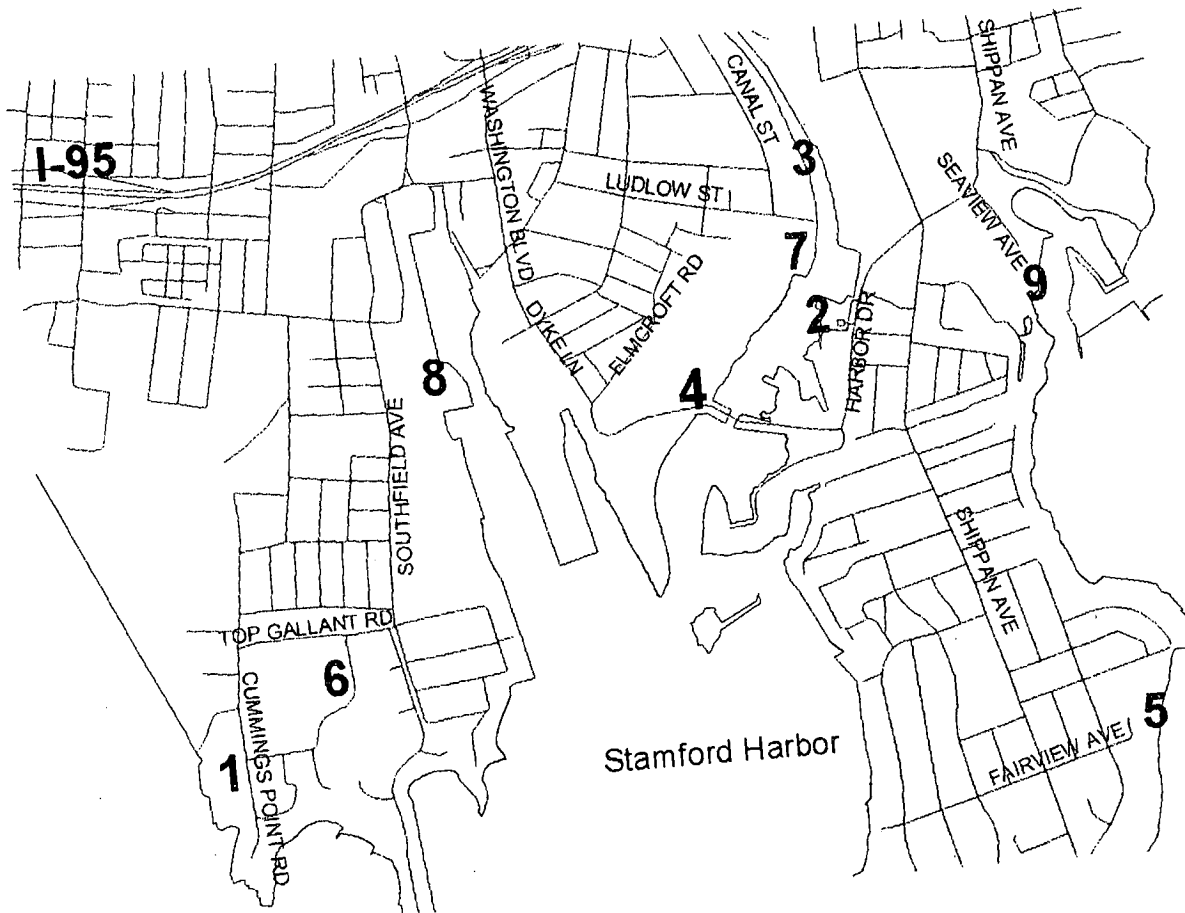


Public Access Easements

Within the Stamford Coastal Management Area

Acquired as Part of

Land Use Board Approvals



1. Conair Corporation – Cummings Point Road
2. Harbor House – Harbor Drive
3. Harbor Square – Canal Street
4. Pitney Bowes – Elmcroft Road and Dyke Lane
5. St Davids Bluff – eastern terminus of Fairview Avenue
6. Soundview Farms – Top Gallant and Gatehouse Roads
7. Stamford Harbor Park – Ludlow Street
8. Village at Stamford Landing & Chocolate Factory- Southfield Avenue
9. Westcott Office Plaza – Seaview Avenue

PUBLIC ACCESS EASEMENTS

IN STAMFORD, CONNECTICUT

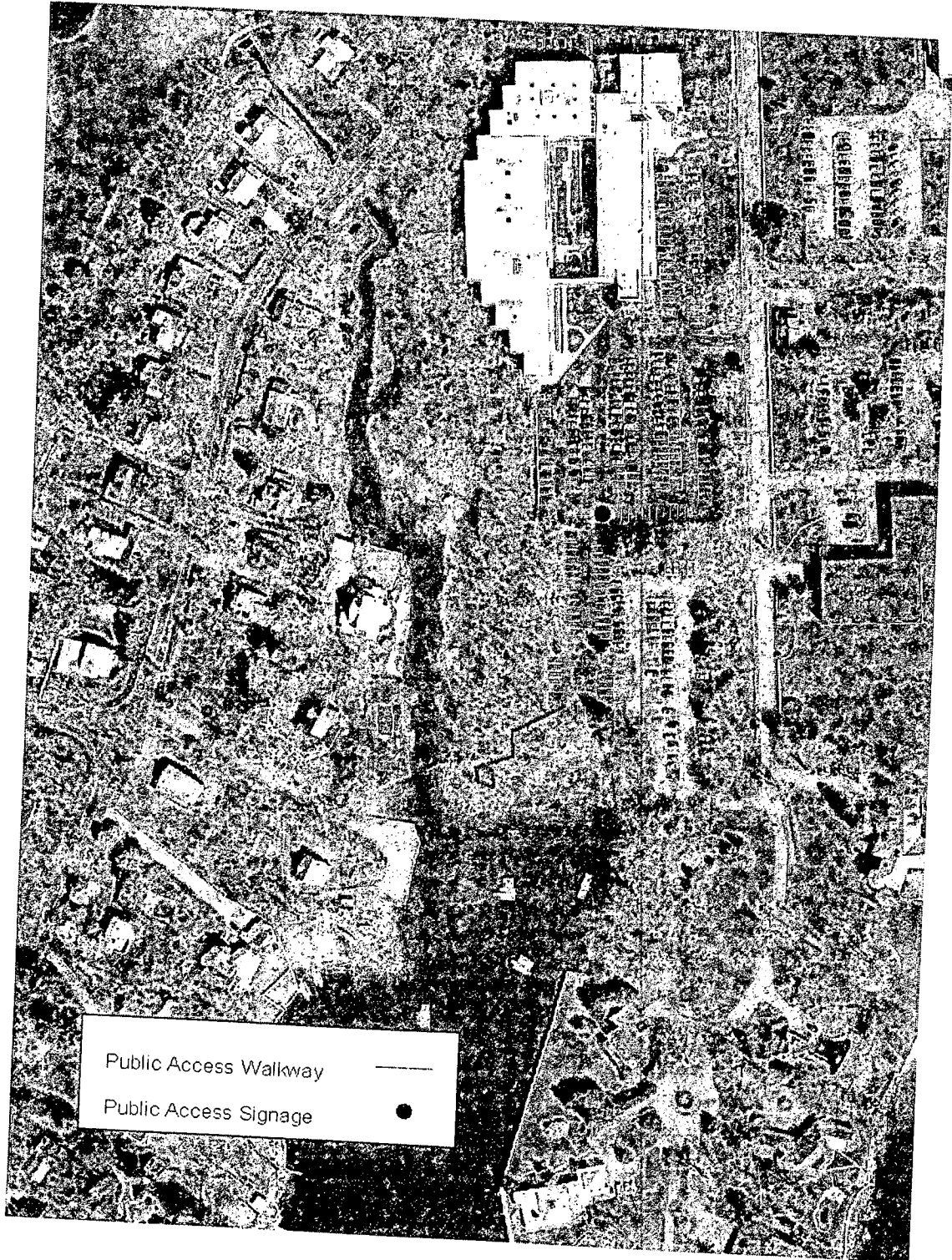
July 2001

Public Access Easements are of two types: 1) those that were required as a condition of subdivision or zoning site plan approval for projects located within the coastal area and 2) public plazas downtown which received bonus floor area as a result of Section 7S, subsection 2 of the zoning regulations.

In response to questions raised about enforcement in public access areas, the Land Use Bureau initiated a review of all public access easements it has acquired for the City. The following pages are the result of this review. It should be noted that maps are provided for locational purposes only and do not pretend to accurately depict the easement areas.

Conair Corporation – Cummings Point Road

Public Access Overlook Trail 130 linear feet established by Zoning
Application #86-028



CONAIR



Sign at entrance

CONAIR



Sign in parking lot. Public access area is in the distance.

CONAIR



Entrance to public access area

CONAIR



Public access outlook

Conair



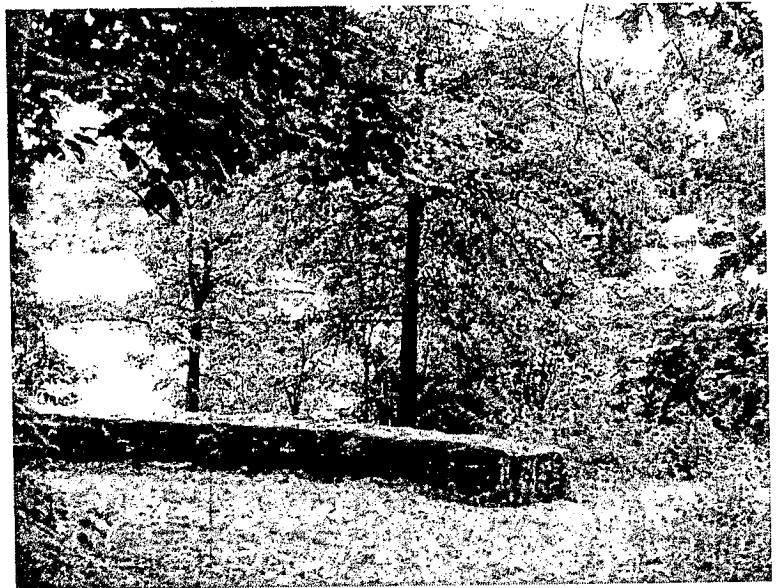
Public Access sign at Cummings Point Road



Public Access sign within parking lot



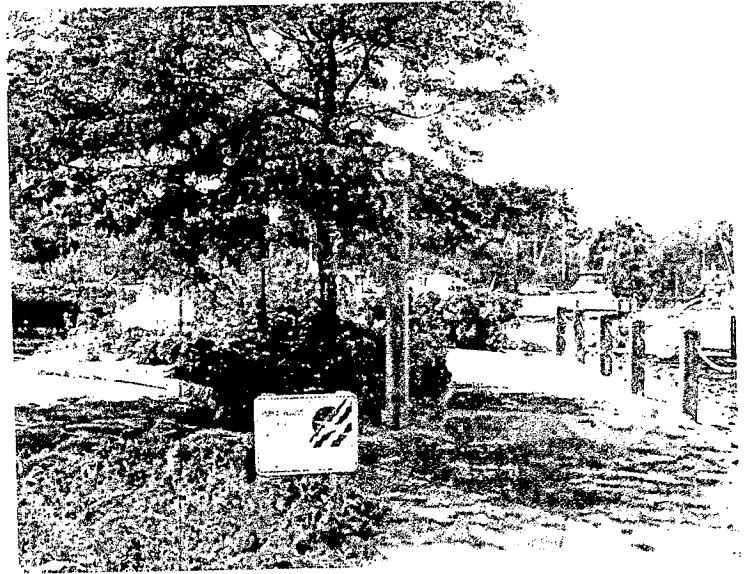
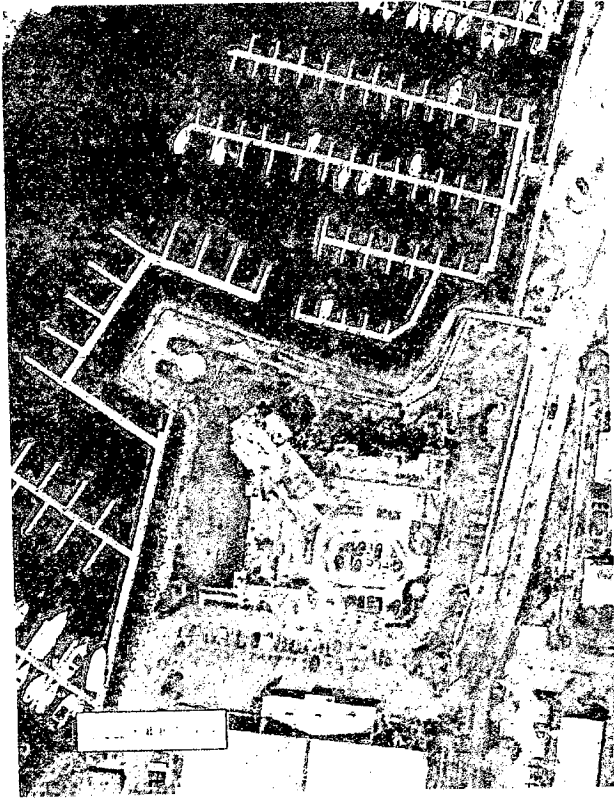
Entrance to overlook trail



Overlook

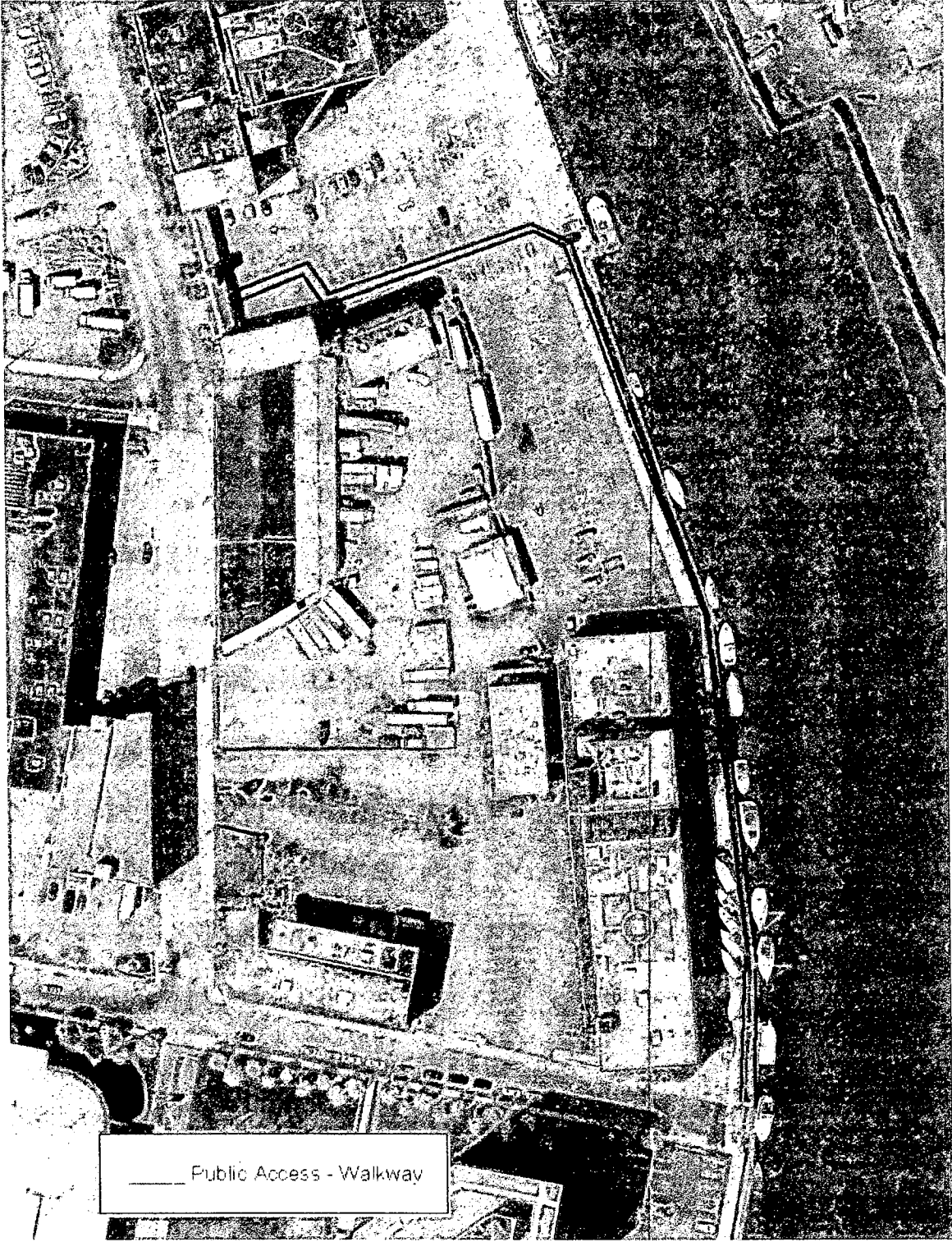
Harbor House - Harbor Drive

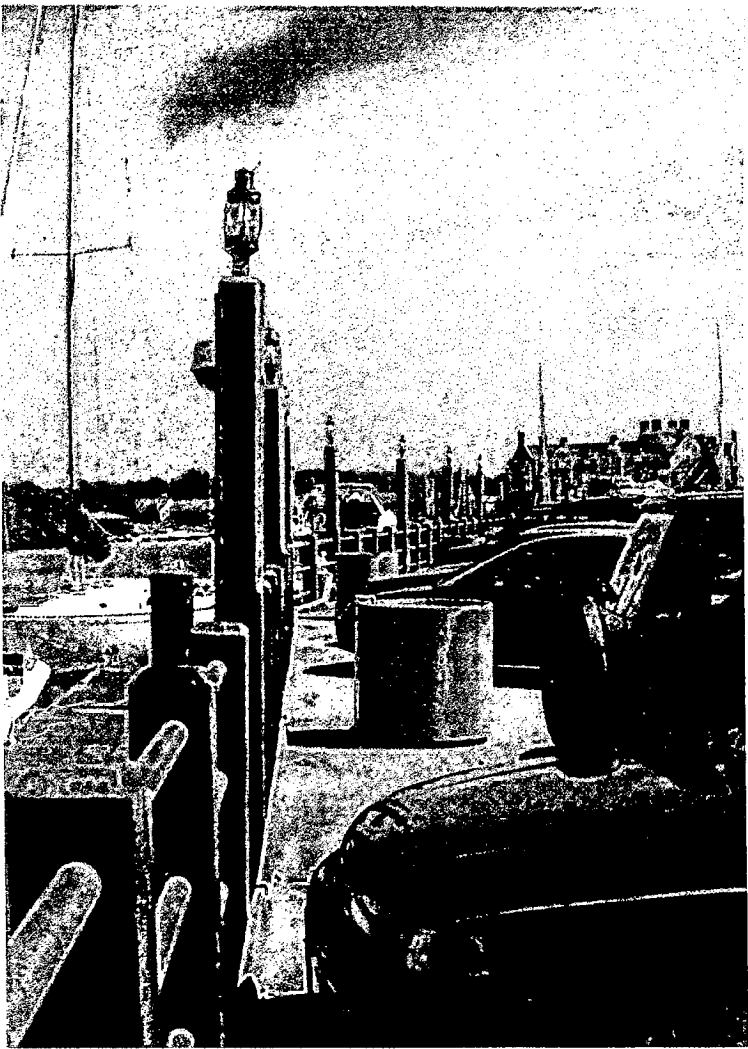
Public Access trail and boardwalk
32,670 sq. ft. (1,060 linear feet)
established by Zoning Application
#86-042.



Harbor Square – Canal Street

Public Access walkway 9,500 sq. ft. (740 linear feet) as established by Zoning Application #86-046.





Harbor Square Public Access Walkway

