

City of Stamford Parks + Recreation Commission



Conceptual Plan Review for a Dog Park at Scofieldtown Park + Yard

ARIS LAND STUDIO

Sustainability + Land Architecture

78 Elm Street
Bridgeport, CT 06604
www.arisls.com
203.606.3130

October 18, 2023



2014



2013



History

Scofieldtown Park Dog Park
10/18/2023



Scofieldtown Park Dog Park
10/18/2023

2010 Aerial
UCONN Air Photo Archive



CAPPING PLAN AS PREPARED BY TRC OF WINDSOR, CT

CITY OF STAMFORD, CONNECTICUT

SCOFIELDTOWN PARK + YARD

END-USE PLAN DESIGN
CITY OF STAMFORD, CONNECTICUT

FINAL END-USE PLAN
OVERALL SITE PLAN

DATE:
December 4, 2013

Aris Land Studio
1450 Barnum Avenue
Suite 201
Bridgeport, CT 06610
203.466.3130
www.AriLS.com

PRE-view Landscape Architects
Landscape Architecture
Urban Design and Site Planning

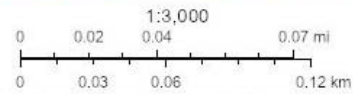


Scofieldtown Park Dog Park
10/18/2023

ARIS LAND STUDIO
Sustainability + Land Architecture



10/13/2023



Westchester County GIS, Esri, HERE, Garmin, IPC, New York State, Maxar, Microsoft

Scofieldtown Park Dog Park
10/18/2023

ARIS LAND STUDIO
Sustainability + Land Architecture



Scofieldtown Park Dog Park
10/18/2023

July 2020

Success

ARIS LAND STUDIO
Sustainability + Land Architecture



Scofieldtown Park Dog Park
10/18/2023

July 2023

Success

ARIS LAND STUDIO
Sustainability + Land Architecture

Dog Park Needs

- Separate Areas for small / large dogs
- Fencing – minimum height 4', with double gate system
- Water – drinking, as well as play
- Seating
- Shade
- Waste Control
- Signage
- Visitor stimulation – dog challenges, obstacle course



Scofieldtown Park Dog Park
10/18/2023

LOCATION

ARIS LAND STUDIO
Sustainability + Land Architecture



Scofieldtown Park Dog Park
10/18/2023

LOCATION

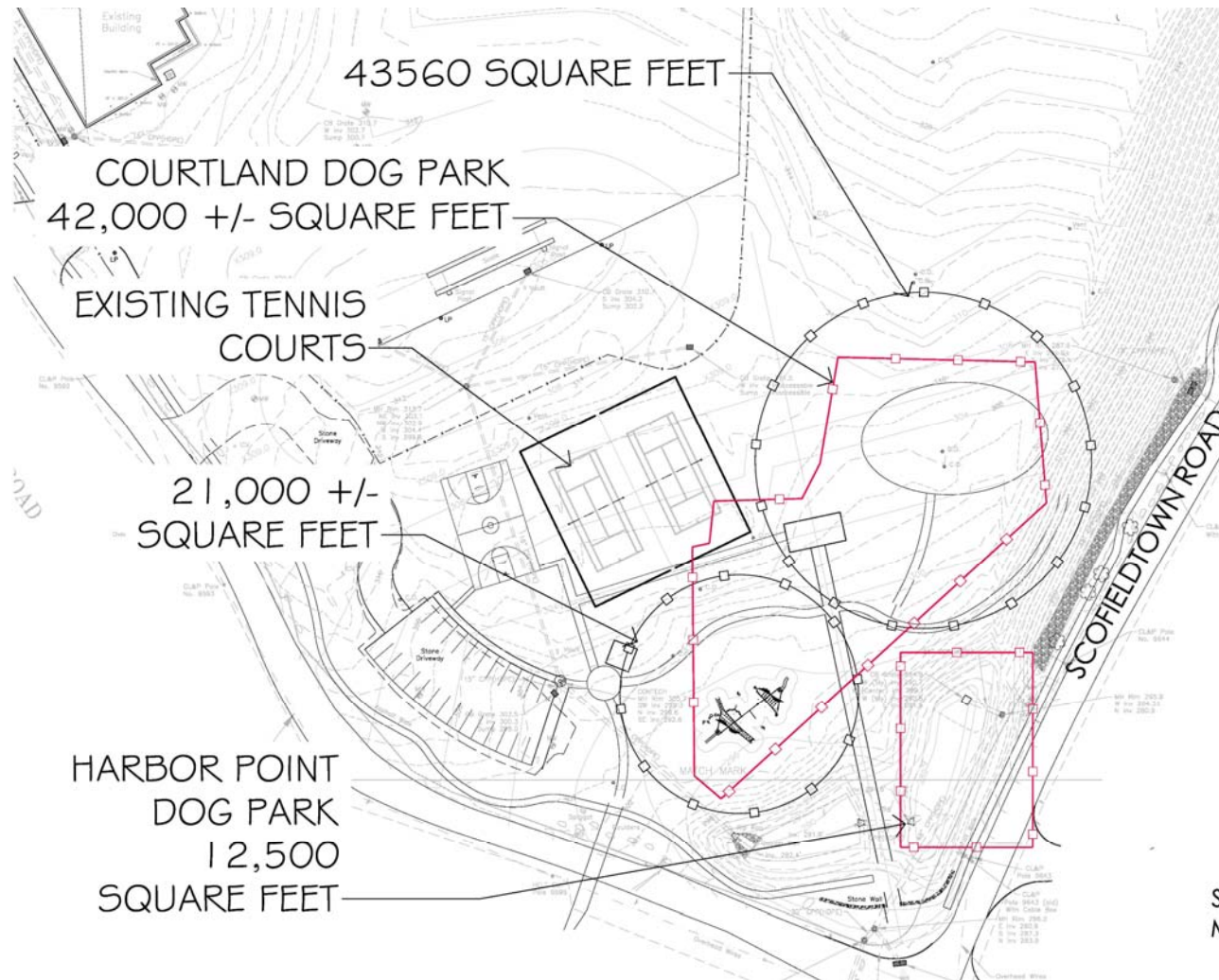
ARIS LAND STUDIO
Sustainability + Land Architecture



Scofieldtown Park Dog Park
10/18/2023

LOCATION

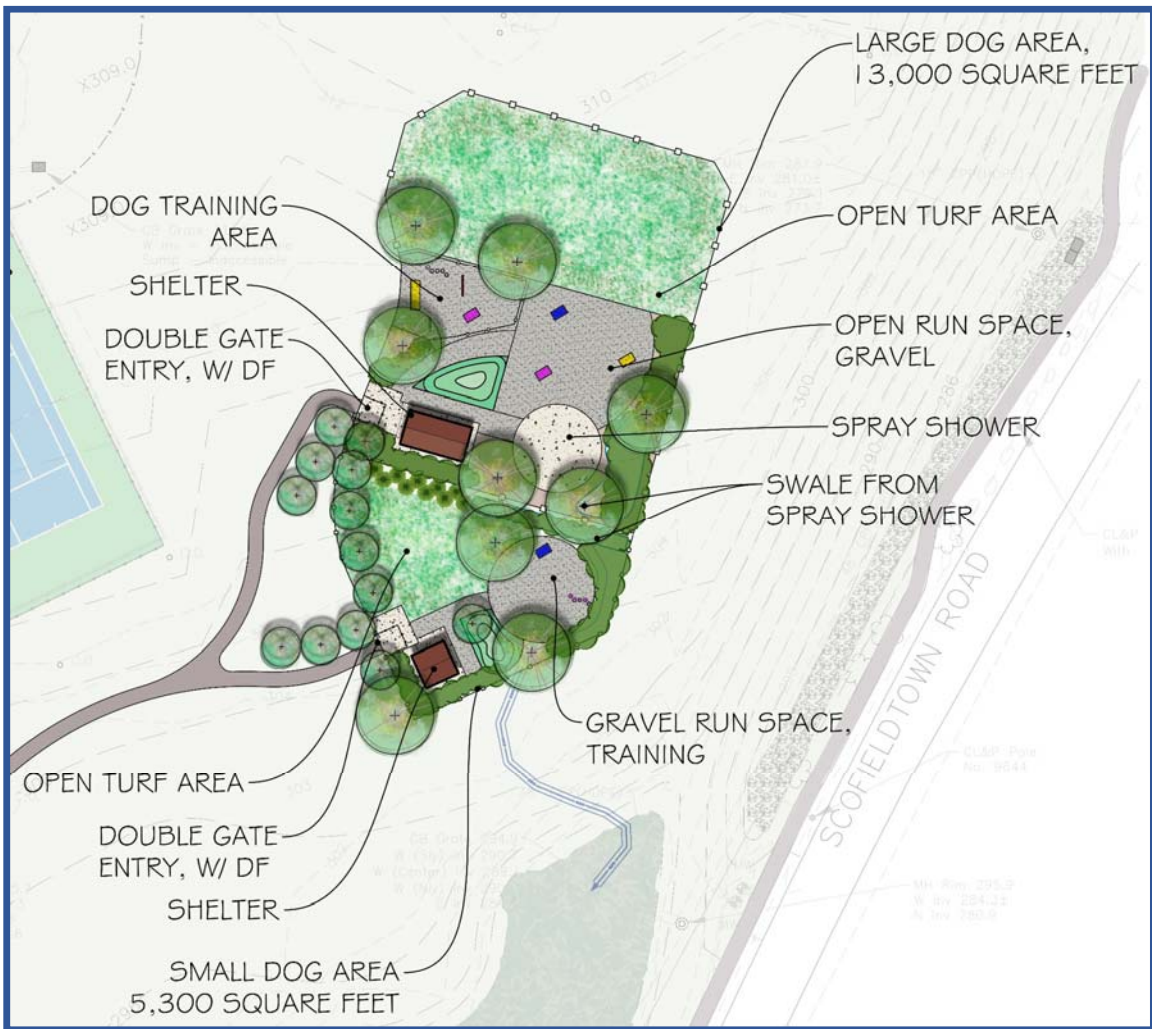
ARIS LAND STUDIO
Sustainability + Land Architecture



Space Needs + Comparisons



Scofieldtown Park Dog Park
 10/18/2023



Scofieldtown Park Dog Park
10/18/2023

Large Dog Park

13,000 Square Feet: 18 – 24 dogs

Small Dog Park

5,000 Square Feet: 7 – 10 dogs

*500 – 700 square foot per dog
(per Fairfax County Dog Park Study, 2021)*

Dog Park Capacity



Small Dog Area:
12' Square



Large Dog Area: 22' x 12'
(16' x 24' shown)

Shade Elements



Drinking bowl
with Hose



Hydrant
- for general service

Water

Scofieldtown Park Dog Park
10/18/2023

ARIS LAND STUDIO
Sustainability + Land Architecture



Spray Shower - Newtown, CT



Tompkins Square Dog
Park, NYC

Water

Scofieldtown Park Dog Park
10/18/2023

ARIS LAND STUDIO
Sustainability + Land Architecture



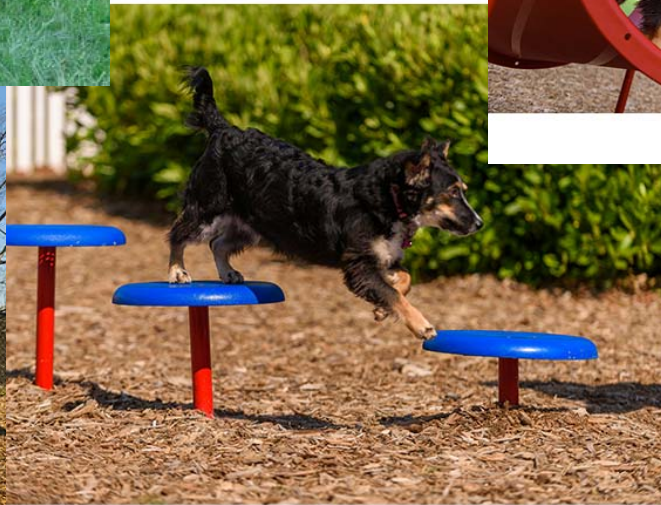
Hoop Jump



Crawl Tube / Tunnel



Ramp



Stepping Pods

Stimulation / Activities

Scofieldtown Park Dog Park
10/18/2023

ARIS LAND STUDIO
Sustainability + Land Architecture



Freedom Park, NJ

Stimulation / Activities

Scofieldtown Park Dog Park
10/18/2023

ARIS LAND STUDIO
Sustainability + Land Architecture

Surfacing	Pros	Cons	Cost	Typical Use
Natural Turf	Soft / Clean	Wears Quickly, High Maintenance	Medium	Dog Parks larger than 3 acres
Gravel (Fine Stone / Stone Dust)	Drains Well / Longevity	Can erode if not on level surface	Medium	Preferred choice for all dog parks *
Wood Mulch	Easy to replace	Hold dog waste / poor drainage	Low	Not recommended for use in dog parks *
Synthetic Turf	Less Maintenance	Requires frequent cleaning	High	Small dog parks and dog runs if coupled with irrigation system.

Table from Fairfax County Dog Parks Study, 2021

Surface Materials



Scofieldtown Park Dog Park
10/18/2023

On-Site Materials

ARIS LAND STUDIO
Sustainability + Land Architecture



April 2018

November 2022

- Public Input for the Design Process
- Phasing of park elements
- Realistic expectations for implementation of park elements

Schedule / Expectations

Scofieldtown Park Dog Park
10/18/2023

ARIS LAND STUDIO
Sustainability + Land Architecture



Scofieldtown Park Dog Park
10/18/2023

Discussion