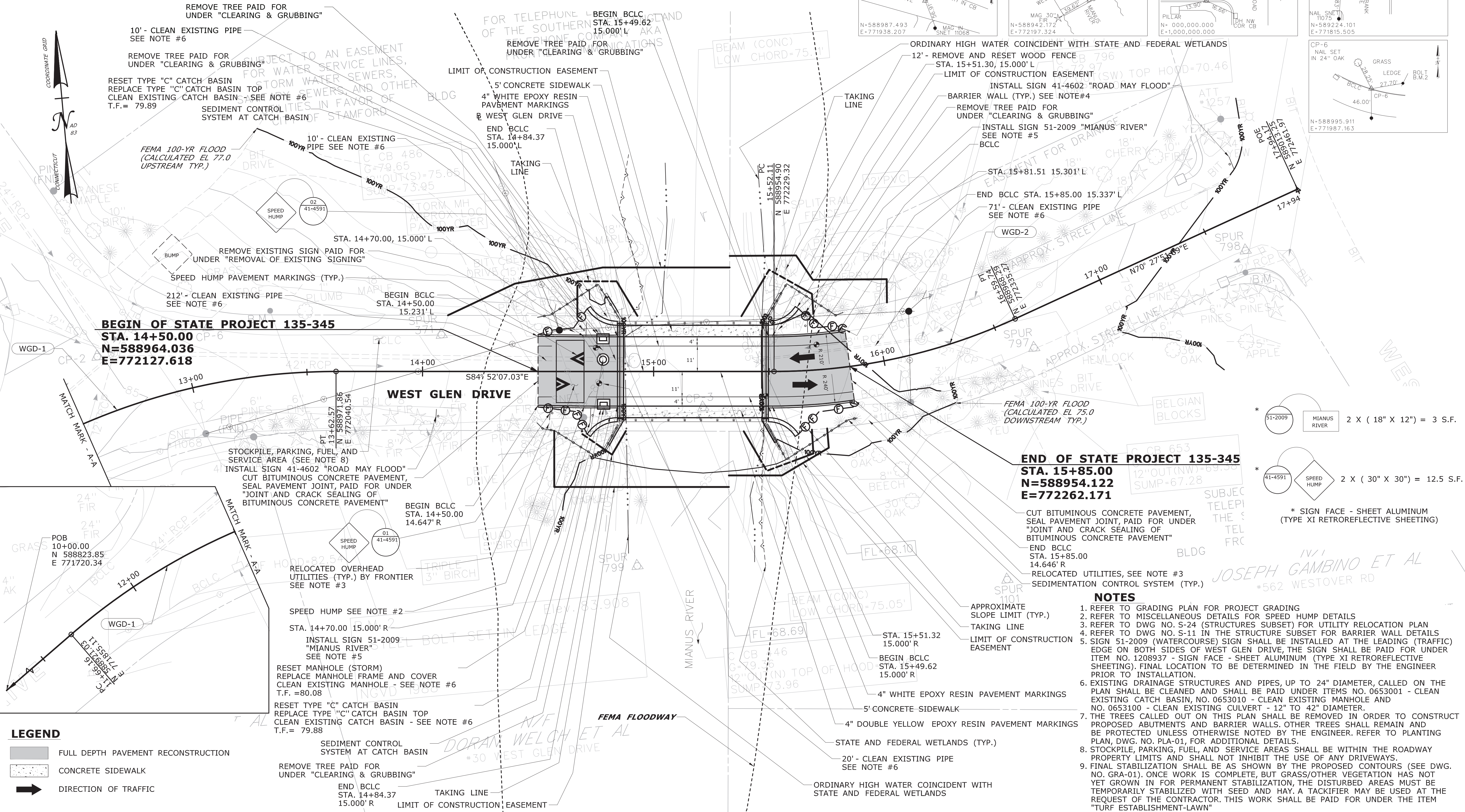
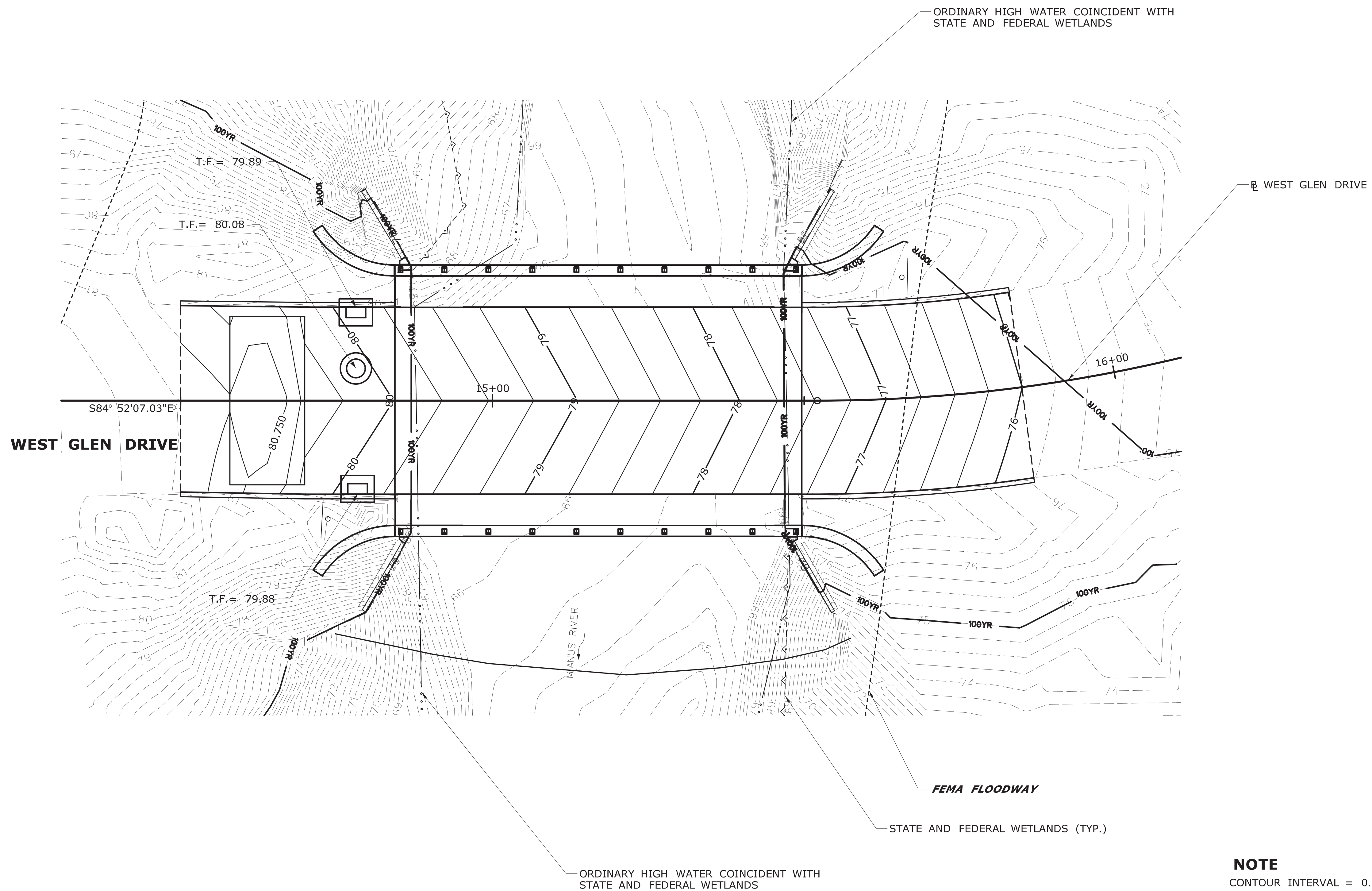


CURVE DATA - WEST GLEN DRIVE										
CURVE	PC			PI			PT			
	STA.	NORTHING	EASTING	STA.	NORTHING	EASTING	STA.	NORTHING	EASTING	
WGD-1	11+66.16	588921.025	771855.113	12+68.76	588981.033	771938.342	13+62.57	588971.856	772040.538	40°55'21.5" 102.607' 196.415' 275.000'
WGD-2	15+52.11	588954.904	772229.316	16+06.77	588950.015	772283.759	16+59.74	588968.293	772335.274	24°40'01.3" 54.662' 107.630' 250.000'



THE INFORMATION, INCLUDING ESTIMATED QUANTITIES OF WORK, SHOWN ON THESE SHEETS IS BASED ON LIMITED INVESTIGATIONS BY THE STATE AND IS IN NO WAY WARRANTED TO INDICATE THE CONDITIONS OF ACTUAL QUANTITIES OF WORK WHICH WILL BE REQUIRED.				DESIGNER/DRAFTER: L. AL-ATTAR/B. VALENZUELA CHECKED BY: J. KOERNER SCALE IN FEET 0 20 40 SCALE 1"=20'		SIGNATURE/ BLOCK: 		PROJECT TITLE: <b>REHABILITATION OF BRIDGE NO. 05010 - WEST GLEN DRIVE OVER MIANUS RIVER</b>		CITY: <b>STAMFORD</b>		PROJECT NO. <b>135-345</b>	
DRAWING TITLE: <b>HIGHWAY PLAN</b>				DRAWING NO. <b>PLN-01</b>		SHEET NO. <b>03.04</b>							

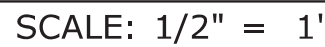
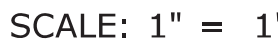




**NOTE**  
CONTOUR INTERVAL = 0.25'

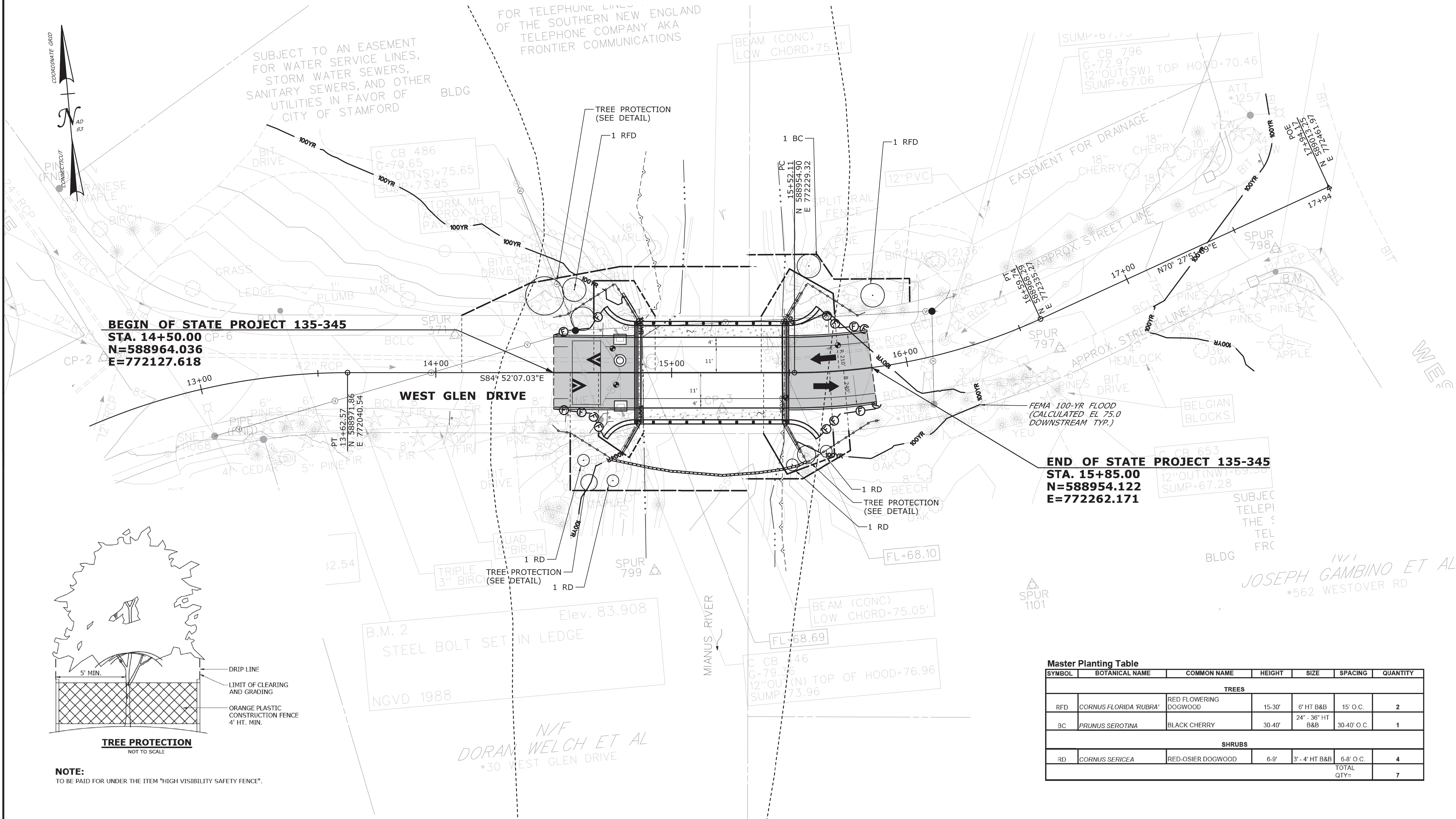
**LEGEND**  
—70— PROPOSED CONTOURS  
- -70- - EXISTING CONTOURS

				THE INFORMATION, INCLUDING ESTIMATED QUANTITIES OF WORK, SHOWN ON THESE SHEETS IS BASED ON LIMITED INVESTIGATIONS BY THE STATE AND IS IN NO WAY WARRANTED TO INDICATE THE CONDITIONS OF ACTUAL QUANTITIES OF WORK WHICH WILL BE REQUIRED.		DESIGNER/DRAFTER: L. AL-ATTAR CHECKED BY: J. KOERNER SCALE IN FEET 0 10 20 SCALE 1"=10'	CITY OF STAMFORD	SIGNATURE/ BLOCK:  Alfred Benesch & Company 120 Hebron Avenue 2nd Floor Glastonbury, CT	PROJECT TITLE: <b>REHABILITATION OF BRIDGE NO. 05010 - WEST GLEN DRIVE OVER MIANUS RIVER</b>	CITY: <b>STAMFORD</b> DRAWING TITLE: <b>GRADING PLAN</b>	PROJECT NO. <b>135-345</b>
REV.	DATE	REVISION DESCRIPTION	SHEET NO.	Plotted Date: 4/12/2023	Filename: ...\\Plan\\HW_MSH_135-345_GRA-01.dgn						DRAWING NO. <b>GRA-01</b> SHEET NO. <b>03.06</b>



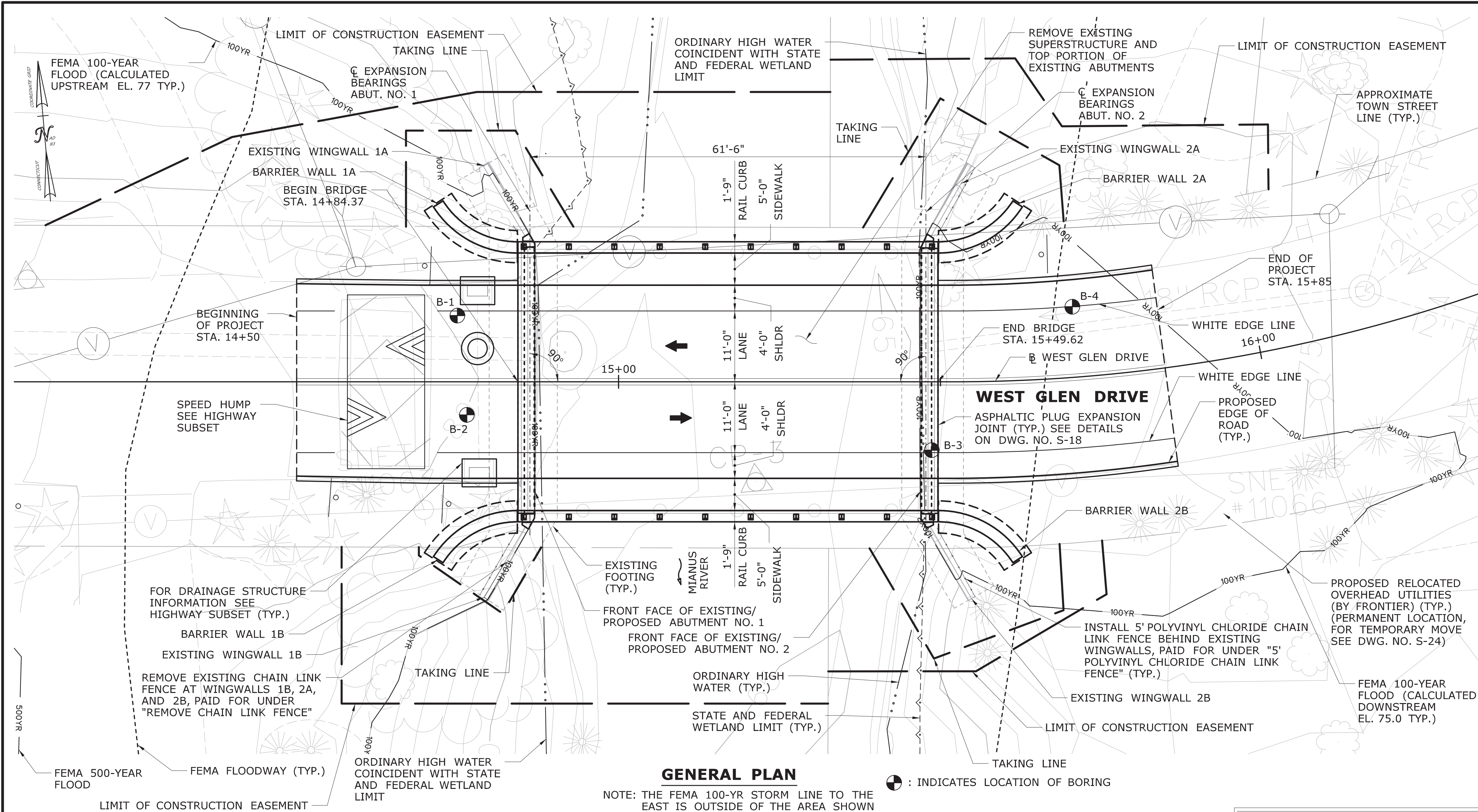
				THE INFORMATION, INCLUDING ESTIMATED QUANTITIES OF WORK, SHOWN ON THESE SHEETS IS BASED ON LIMITED INVESTIGATIONS BY THE STATE AND IS IN NO WAY WARRANTED TO INDICATE THE CONDITIONS OF ACTUAL QUANTITIES OF WORK WHICH WILL BE REQUIRED.		DESIGNER/DRAFTER: B.VALENZUELA CHECKED BY: J.KOERNER  SCALE AS NOTED		CITY OF STAMFORD		SIGNATURE/ BLOCK: <div><div>Alfred Benesch &amp; Company 120 Hebron Avenue 2nd Floor Glastonbury, CT</div></div>		PROJECT TITLE:  REHABILITATION OF BRIDGE NO. 05010 - WEST GLEN DRIVE OVER MIANUS RIVER		CITY:  STAMFORD		PROJECT NO. 135-345	
												DRAWING NO. MDS-01		SHEET NO. 03.11			
REV.	DATE	REVISION DESCRIPTION		SHEET NO.	Plotted Date: 4/12/2023								DRAWING TITLE:  MISC. DETAILS SHEET				





Master Planting Table						
SYMBOL	BOTANICAL NAME	COMMON NAME	HEIGHT	SIZE	SPACING	QUANTITY
TREES						
RFD	CORNUS FLORIDA 'RUBRA'	RED FLOWERING DOGWOOD	15-30'	6' HT B&B	15' O.C.	2
BC	PRUNUS SEROTINA	BLACK CHERRY	30-40'	24" - 36" HT B&B	30-40' O.C.	1
SHRUBS						
RD	CORNUS SERICEA	RED-OSIER DOGWOOD	6-9'	3' - 4' HT B&B	6-8' O.C.	4
TOTAL QTY=						7

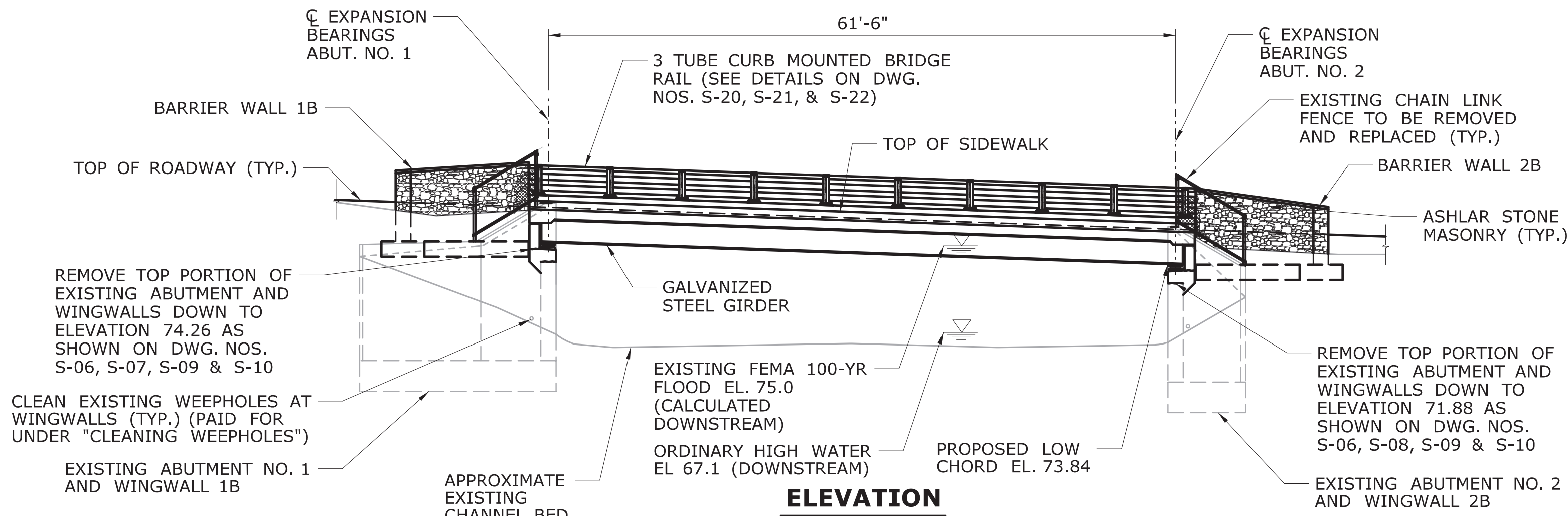




GENERAL PLAN

NOTE: THE FEMA 100-YR STORM LINE TO THE EAST IS OUTSIDE OF THE AREA SHOWN

⊙ : INDICATES LOCATION OF BORING



ELEVATION

GENERAL NOTES:

SPECIFICATIONS: CONNECTICUT DEPARTMENT OF TRANSPORTATION FORM 818 (2020), SUPPLEMENTAL SPECIFICATIONS DATED JANUARY 2023 AND SPECIAL PROVISIONS.

DESIGN SPECIFICATIONS: ALL NEW ELEMENTS TO BE DESIGNED ACCORDING TO AASHTO LRFD BRIDGE DESIGN SPECIFICATIONS, 2020, 9TH EDITION, AS SUPPLEMENTED BY THE CONNECTICUT DEPARTMENT OF TRANSPORTATION BRIDGE DESIGN MANUAL (2003).

MATERIAL STRENGTHS:  
CONCRETE:  
CLASS PCC 03340  $f_c = 3,000$  PSI  
CLASS PCC 04462  $f_c = 4,000$  PSI  
CLASS PCC 04481  $f_c = 4,000$  PSI

THE CONCRETE STRENGTH  $f_c$ , USED IN DESIGN OF THE CONCRETE COMPONENTS IS NOTED ABOVE. THE COMPRESSIVE STRENGTH OF THE CONCRETE IN THE CONSTRUCTED COMPONENTS SHALL CONFORM TO THE REQUIREMENTS OF 6.01 - CONCRETE FOR STRUCTURES, AND M.03 - PORTLAND CEMENT CONCRETE.

REINFORCEMENT:  
(ASTM A615 GRADE 60)  $F_y = 60,000$  PSI (GALVANIZED SEE DWG. NO. S-03 FOR DETAILS)

STRUCTURAL STEEL:  
(AASHTO M270, GRADE 50)  $F_y = 50,000$  psi

LIVE LOAD: HL-93, LEGAL AND PERMIT VEHICLES

FUTURE PAVING ALLOWANCE: NONE

STRUCTURAL STEEL: SEE STRUCTURAL STEEL NOTES ON DWG. NO. S-14 FOR DESIGNATIONS AND REQUIREMENTS.

BITUMINOUS CONCRETE OVERLAY: THE 3" LAYER OF HMA SHALL CONSIST OF TWO LIFTS. THE FIRST SHALL BE HMA S 0.25 (1 INCH THICK). THE SECOND SHALL BE HMA S 0.5 (2 INCHES THICK). MIXES SHALL BE TRAFFIC LEVEL 2.

DIMENSIONS: WHEN DECIMAL DIMENSIONS ARE GIVEN TO LESS THAN THREE DECIMAL PLACES, THE OMITTED DIGITS SHALL BE ASSUMED TO BE ZEROS.

EXISTING DIMENSIONS: DIMENSIONS OF THE EXISTING STRUCTURE SHOWN ON THESE PLANS ARE FOR GENERAL REFERENCE ONLY. THEY HAVE BEEN TAKEN FROM THE ORIGINAL DESIGN DRAWINGS AND ARE NOT GUARANTEED. THE CONTRACTOR SHALL TAKE ALL FIELD MEASUREMENTS NECESSARY TO ASSURE PROPER FIT OF THE FINISHED WORK AND SHALL ASSUME FULL RESPONSIBILITY FOR THEIR ACCURACY. WHEN SHOP DRAWINGS BASED ON FIELD MEASUREMENTS ARE SUBMITTED FOR REVIEW, THE FIELD MEASUREMENTS SHALL ALSO BE SUBMITTED FOR REFERENCE BY THE REVIEWER.

BRIDGE IDENTIFICATION PLACARDS: THE CONTRACTOR SHALL PROVIDE AND INSTALL NEW BRIDGE IDENTIFICATION SIGNS AT EACH LEADING END BARRIER WALL ON THE TRAFFIC SIDE. THE SIGNS SHALL BE FABRICATED WITH 40 GAUGE ALUMINUM SHEET METAL. THE SIGNS SHALL BE 4" BY 12" WITH 3" WHITE REFLECTIVE BLOCK LETTERS ON GREEN REFLECTIVE SHEETING. EACH SIGN SHALL READ: 05010, THE FINAL LOCATION AND ATTACHMENT METHOD FOR THE SIGNS SHALL BE APPROVED BY THE ENGINEER PRIOR TO INSTALLATION. THE BRIDGE SIGNS SHALL BE PAID UNDER ITEM "SIGN FACE SHEET ALUMINUM (TYPE XI RETROREFLECTIVE SHEETING)".

UTILITIES: THE CONTRACTOR SHALL TAKE NECESSARY PRECAUTIONS WHEN WORKING NEAR UTILITIES SO AS NOT TO DISTURB THEM OR PLACE ANY LOAD OR EQUIPMENT ON THEM. ALL UTILITY COMPANIES SHALL BE NOTIFIED 48 HOURS PRIOR TO ANY WORK AFFECTING CABLES, CONDUITS, OR OTHER UTILITIES. SEE "NOTICE TO CONTRACTOR - UTILITY WORK SCHEDULE" AND DWG. NO. S-24 FOR UTILITIES AFFECTED BY THE PROJECT.

MASH TEST LEVEL: THE 3-TUBE CURB MOUNTED BRIDGE RAIL MEETS TL-3 CRITERIA FOR MASH 2016

HYDRAULIC SUMMARY TABLE

DRAINAGE AREA [SQ. MI.]	29.1
DESIGN FREQUENCY [YEAR]	100
DESIGN DISCHARGE [CFS]	4020
AVERAGE DAILY FLOW ELEVATION [FT]	66.6 (ESTIMATED)
DESIGN WATER SURFACE EL. - UPSTREAM [FT]	75.4
DESIGN WATER SURFACE EL. - DOWNSTREAM [FT]	75.0
MAXIMUM SCOUR ELEVATION [FT]	64.9
FREQUENCY [YEAR]	500
DISCHARGE [CFS]	5230
WORST CASE SCOUR SUBSTRUCTURE UNIT	ABUTMENTS

ESTIMATED TRANSPORTATION DIMENSIONS AND WEIGHT

MEMBER	LENGTH (FT)	HEIGHT (FT)	WIDTH (FT)	WEIGHT (LBS)
GALVANIZED STEEL GIRDER	63'-0"	2'-4"	1'-3"	10,600

NOTICE TO BRIDGE INSPECTORS

THE DEPARTMENT'S BRIDGE SAFETY PROCEDURES REQUIRE THIS BRIDGE TO BE INSPECTED FOR, BUT NOT LIMITED TO, ALL APPROPRIATE COMPONENTS INDICATED IN THE GOVERNING MANUALS FOR BRIDGE INSPECTION. ATTENTION MUST BE GIVEN TO INSPECTING THE FOLLOWING SPECIAL COMPONENTS AND DETAILS. (THE LISTING FOR COMPONENTS FOR SPECIFIC ATTENTION SHALL NOT BE CONSTRUED TO REDUCE THE IMPORTANCE OF INSPECTION OF ANY OTHER COMPONENT OF THE STRUCTURE.) THE FREQUENCY OF INSPECTION OF THIS STRUCTURE SHALL BE IN ACCORDANCE WITH THE GOVERNING MANUALS FOR BRIDGE INSPECTION, UNLESS OTHERWISE DIRECTED BY THE MANAGER OF BRIDGE SAFETY AND EVALUATION.

COMPONENT OR DETAIL	STRUCTURE SHEET REFERENCE
N/A	N/A

CONCRETE DISTRIBUTION

SUPERSTRUCTURE	C.Y.	114
SUBSTRUCTURE	C.Y.	50
FOOTINGS	C.Y.	12
TOTAL	C.Y.	186

REV.	DATE	REVISION DESCRIPTION	SHEET NO.	Plotted Date: 4/20/2023

DESIGNER/DRAFTER:	M. HABEK
CHECKED BY:	R. MEARS
SCALE:	1" = 10'

CITY OF STAMFORD

Filename: ...\\SB\_MSH-GPN\_0135-0345.dgn

SIGNATURE/  
BLOCK:



Alfred Benesch  
& Company  
120 Hebron Avenue  
2nd Floor  
Glastonbury, CT

PROJECT TITLE:

REHABILITATION OF BRIDGE  
NO. 05010 - WEST GLEN DRIVE  
OVER MIANUS RIVER

CITY:

STAMFORD

DRAWING TITLE:

GENERAL PLAN  
AND ELEVATION

PROJECT NO.

135-345

DRAWING NO.

S-02

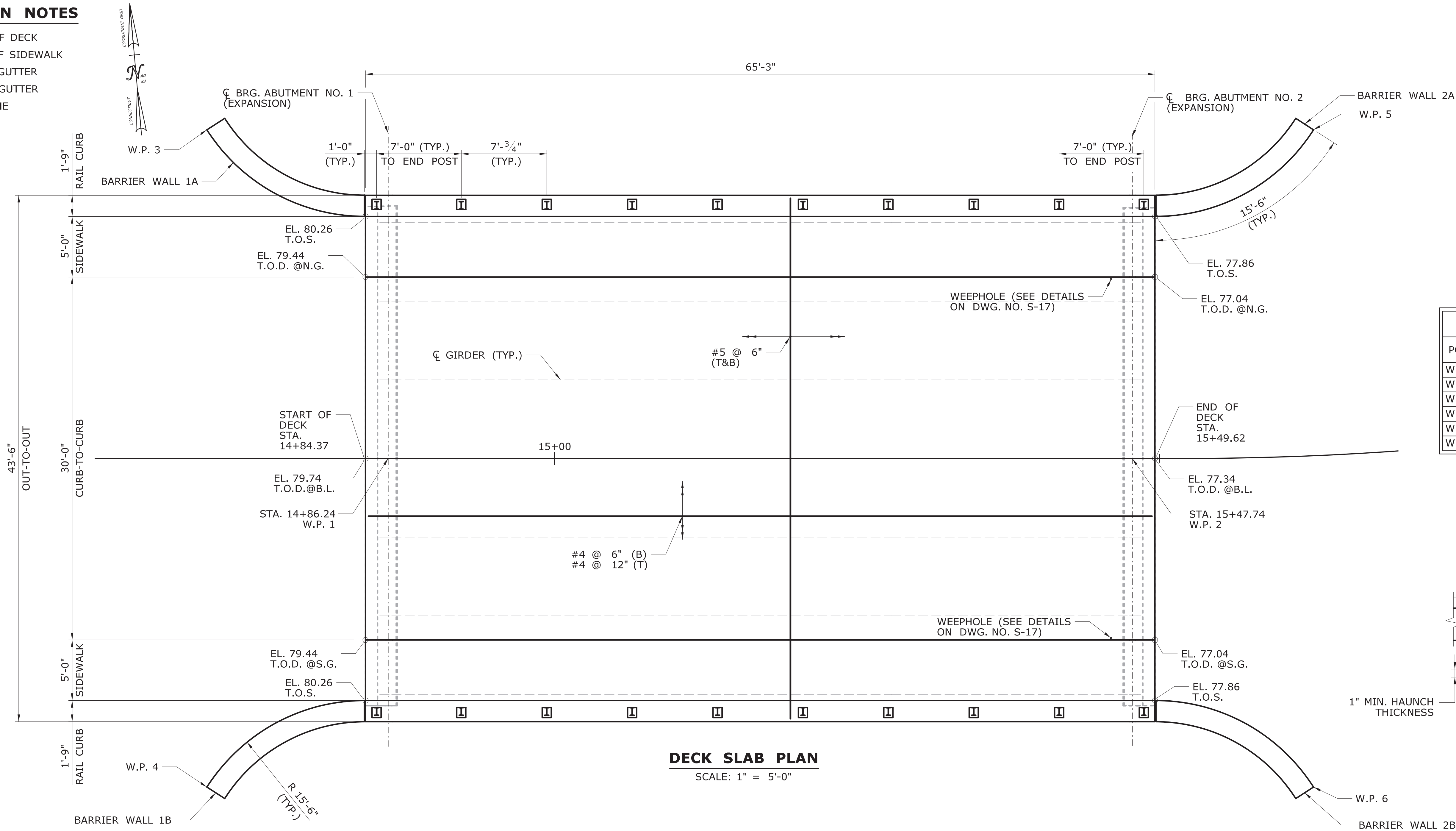
SHEET NO.

04.02



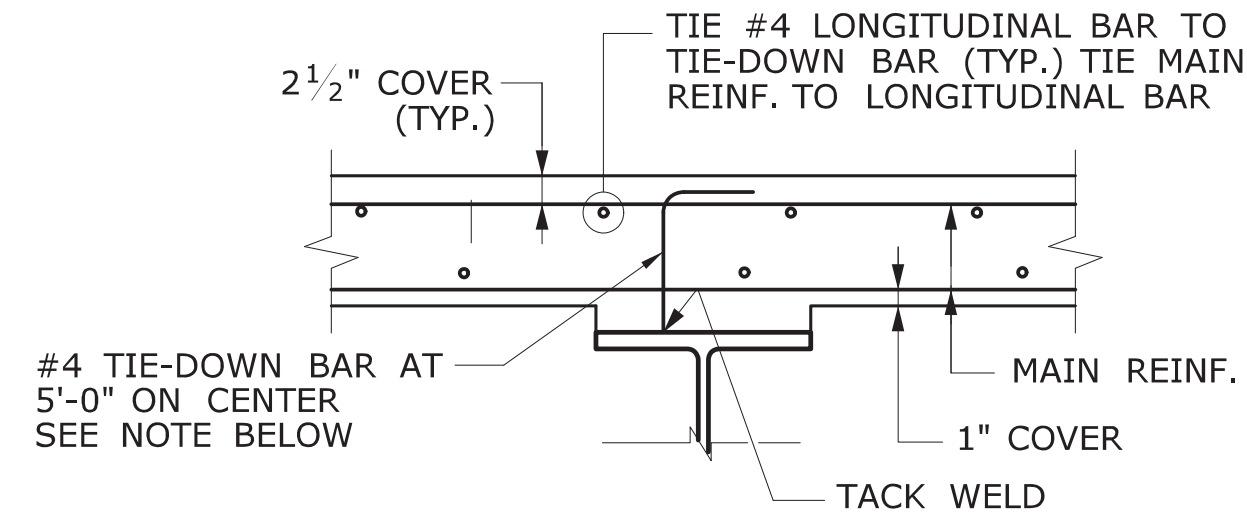
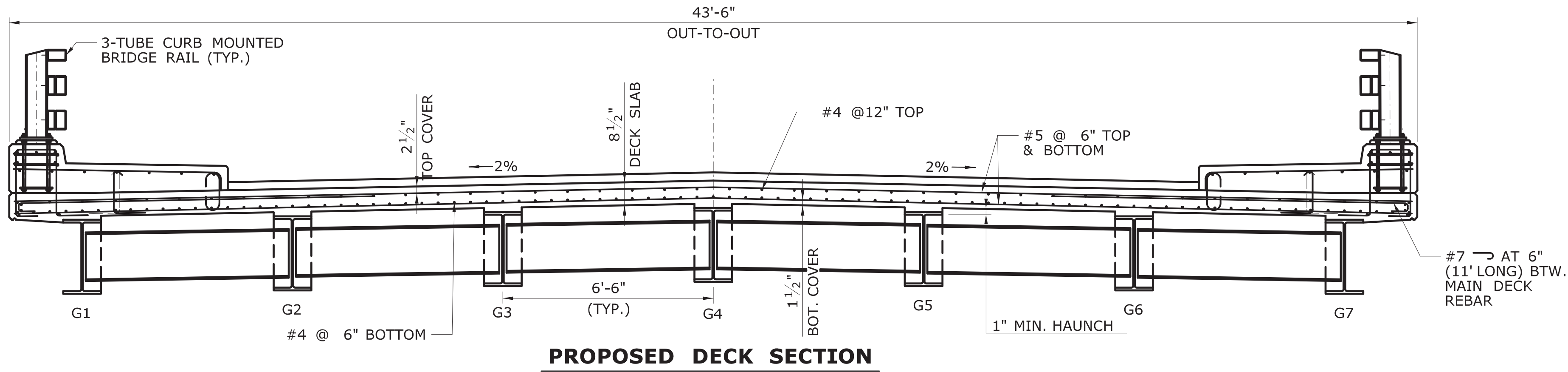
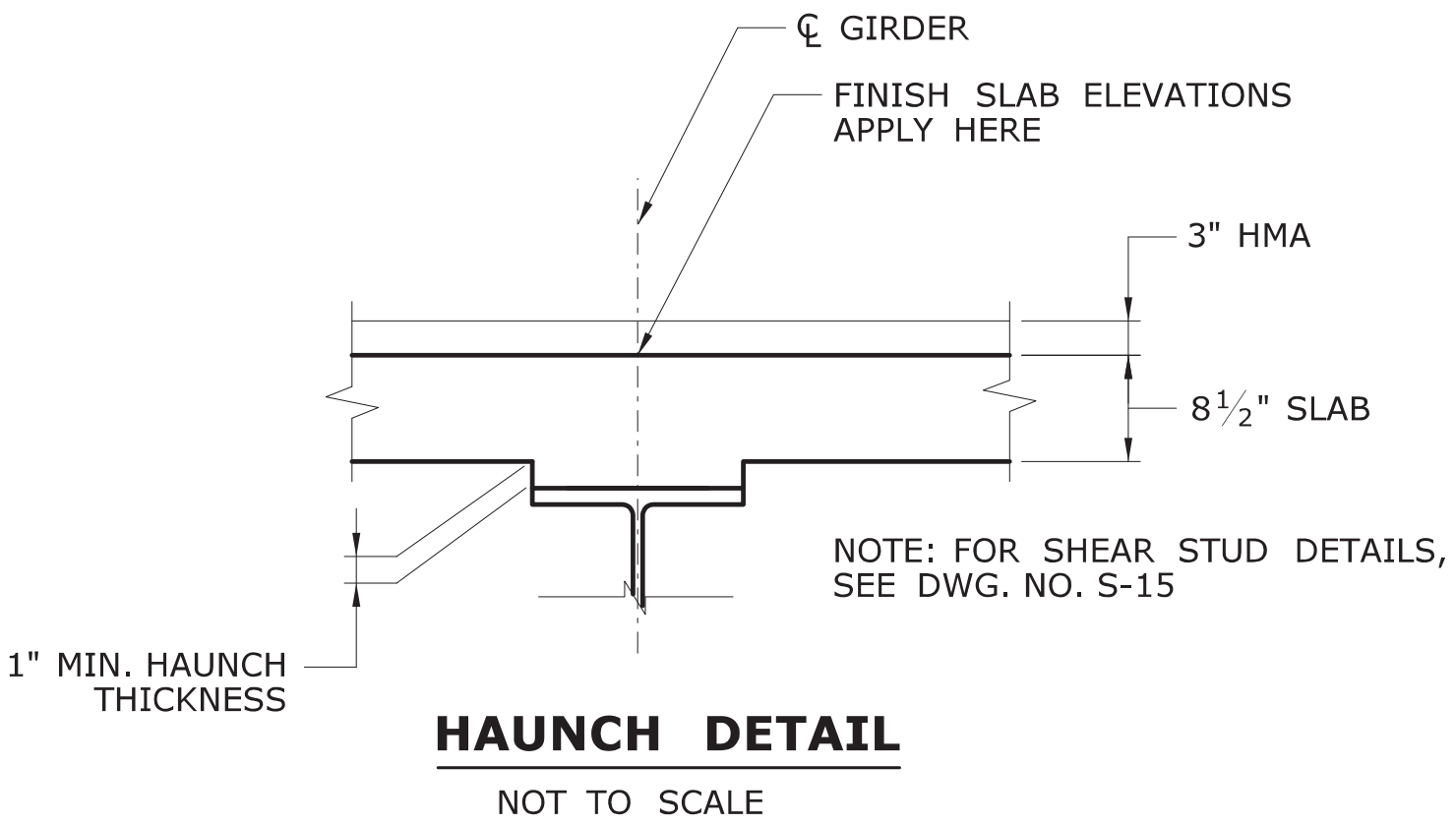
DECK PLAN NOTES

T.O.D. = TOP OF DECK  
T.O.S. = TOP OF SIDEWALK  
S.G. = SOUTH GUTTER  
N.G. = NORTH GUTTER  
B.L. = BASE LINE



TOP OF DECK ELEVATIONS							
BEAM NO.	CL BRG ABUT. 1	1/4L	3/4L	1/2L	3/4L	1/4L	CL BRG ABUT. 2
1	79.29	78.96	78.60	78.24	77.85	77.45	77.02
2	79.42	79.09	78.74	78.37	77.98	77.58	77.16
3	79.55	79.22	78.87	78.50	78.11	77.71	77.29
4	79.68	79.35	79.00	78.63	78.24	77.84	77.42
5	79.55	79.22	78.87	78.50	78.11	77.71	77.29
6	79.42	79.09	78.74	78.37	77.98	77.58	77.16
7	79.29	78.96	78.60	78.24	77.85	77.45	77.02

WORKING POINTS COORDINATES			
POINT	NORTHING	EASTING	LOCATION
W.P. 1	588960.79	772163.72	CL BRG. ABUT. NO. 1 & 2
W.P. 2	588955.29	772224.97	CL BRG. ABUT. NO. 2 & 1
W.P. 3	588989.18	772151.22	END OF BW 1A INSIDE FACE
W.P. 4	588935.09	772146.36	END OF BW 1B INSIDE FACE
W.P. 5	588981.00	772242.32	END OF BW 2A INSIDE FACE
W.P. 6	588926.91	772237.46	END OF BW 2B INSIDE FACE



**TIE-DOWN FOR SLAB REINFORCEMENT**  
NOTE: TIE-DOWN BARS DO NOT EXCLUDE THE USE OF CHAIRS FOR SUPPORTING THE REINFORCEMENT MAT. THE COST OF FURNISHING AND PLACING TIE-DOWN BARS TO BE INCLUDED IN THE CONTRACT ITEM "DEFORMED STEEL BARS-GALVANIZED". TIE-DOWN BARS AND LONGITUDINAL BARS SHALL CLEAR SHEAR CONNECTORS.

				DESIGNER/DRAFTER: C. SORENSEN		CITY OF STAMFORD	SIGNATURE/ BLOCK:  Alfred Benesch & Company 120 Hebron Avenue 2nd Floor Glastonbury, CT	PROJECT TITLE: <b>REHABILITATION OF BRIDGE NO. 05010 - WEST GLEN DRIVE OVER MIANUS RIVER</b>	CITY: <b>STAMFORD</b>	PROJECT NO. <b>135-345</b>	
				CHECKED BY: R. MEARS							DRAWING NO. <b>S-16</b>
				SCALE AS NOTED							
REV.	DATE	REVISION DESCRIPTION	SHEET NO.	Plotted Date: 4/11/2023		Filename: ...\\SB_MSH-Bro5010-0135-0345-DECK PLAN.dgn	DRAWING TITLE: <b>DECK PLAN, SECTION, AND ELEVATIONS</b>				