

Stamford  
**VISION**  
**ZERO**

**Stamford Parks and Recreation Commission  
Vision Zero and Parks in Stamford  
4.17.24**

# Transportation, Traffic & Parking Department

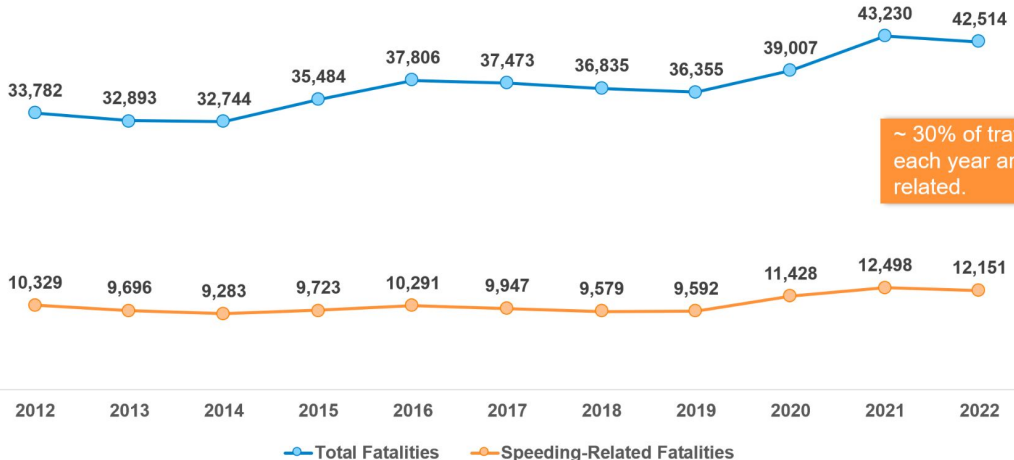
Mission:

Ensure the safe and efficient movement of people and goods in the City of Stamford.



# ROAD DEATHS: A NATIONAL ISSUE

## US Traffic Fatalities Total & Speeding-Related, 2012-2022



Source: NHTSA's Fatality Analysis Reporting System (FARS) 2012-2020 Final File, 2021 Annual Report File

What is Vision Zero?

**A fundamental rethinking  
of street safety**

# How is Vision Zero Different

## Traditional Road safety Thinking

- Traffic deaths are inevitable
- Perfect human behavior
- Prevent collisions
- Individual responsibility
- Saving lives is expensive

## Vision Zero Thinking

- Traffic deaths are preventable
- Integrate human failing in approach
- Prevent fatal and severe crashes
- Systems approach
- Saving lives is not expensive

# Focus on the System, not the Individual

The roadway system should be designed to prevent fatalities

Layered and redundant safety system

## Safe Streets and Safe Speeds

Design roads to

- Reduce speeds
- Physically separate users
- Improve visibility



# STAMFORD VISION ZERO

A comprehensive Citywide effort to eliminate serious and fatal roadway crashes by 2032

Launched in 2022

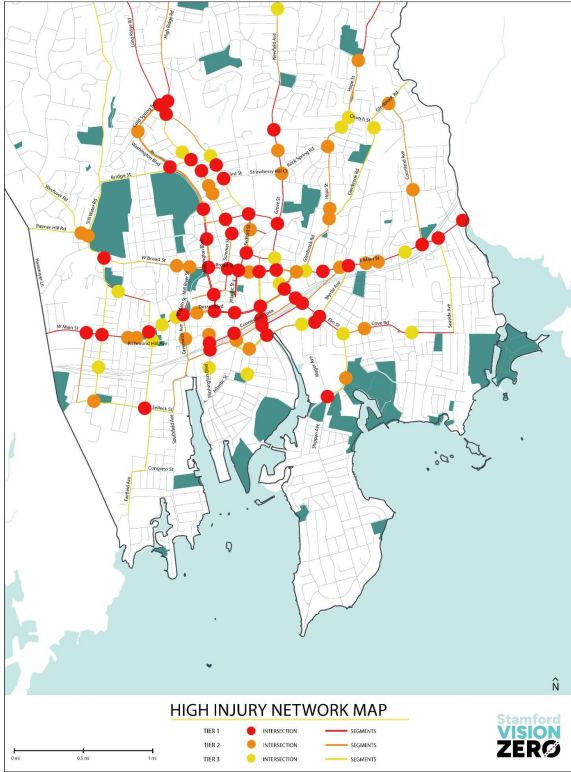
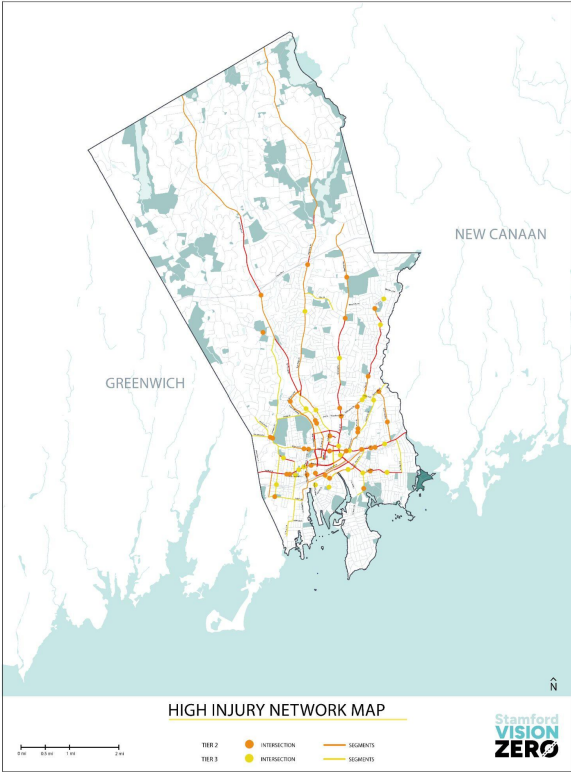
Broad group of stakeholders

This is a plan for Stamford

*We are inspired by the belief that even one fatality is too many.*



# DATA ANALYSIS: HIGH INJURY NETWORK



Tier 1 captures 41% of KSI on just 3% of intersections and 4% of roadway miles.

Tiers 1-3 capture 59% of KSI on just 6% of intersections and 15% of roadway miles.



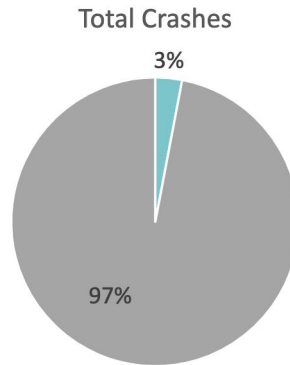
# VISION ZERO ACTION PLAN

Citywide plan to guide us to zero

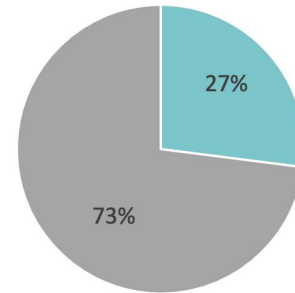
- Policy
- Procedure
- Projects
- Plans

Work with the community

Data backed approach



Severe & Fatal Crashes (KSI)



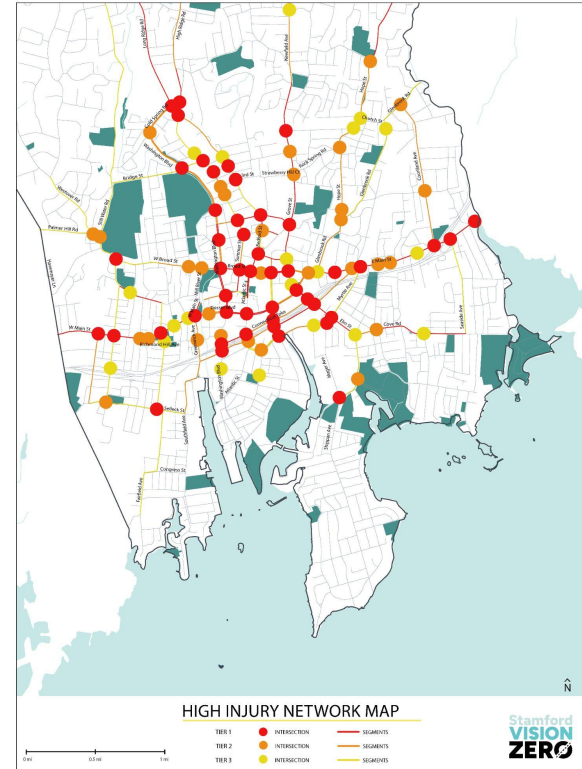
■ Bicycle & Pedestrian ■ Motor Vehicle

# VISION ZERO AND PARKS AND RECREATION

Mayor Caroline Simmons Park Goal:

“Ensure every resident has access to a quality park within a 10-minute walk of where they live.”

**How do we ensure people can safely walk to our parks?**



# WHAT WE'RE ALREADY DOING

## Quick Build Projects



## Capital Construction



# HOW YOU CAN HELP

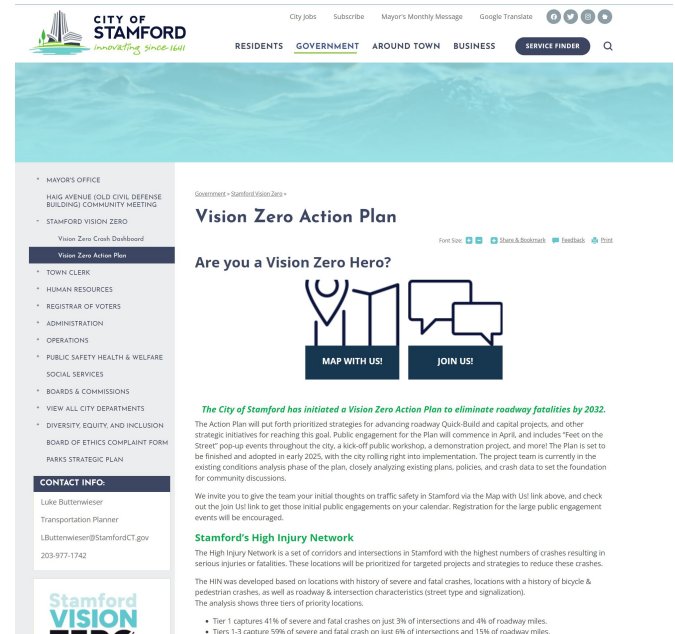
## Map with Us!



## Join us!

### Kick-off workshop

- Mill River Park  
Whittingham  
Center
- Tuesday, May 7  
(6:00–7:30 PM)



The screenshot shows the City of Stamford website for the Vision Zero Action Plan. The header includes the City of Stamford logo and navigation links for City Jobs, Subscribe, Mayor's Monthly Message, Google Translate, and a Service Finder. The main content area features a navigation menu on the left with links to Mayor's Office, Town Clerk, Human Resources, Registrar of Voters, Administration, Operations, Public Safety Health & Welfare, Social Services, Boards & Commissions, and City Departments. The main content area is titled "Vision Zero Action Plan" and includes a "Are you a Vision Zero Hero?" section with "MAP WITH US!" and "JOIN US!" buttons. Below this is a section titled "Stamford's High Injury Network" which provides details about the network's purpose and the analysis used to identify high-risk locations.

City Jobs   Subscribe   Mayor's Monthly Message   Google Translate

RESIDENTS   GOVERNMENT   AROUND TOWN   BUSINESS   SERVICE FINDER

Government - Stamford Vision Zero

### Vision Zero Action Plan

Are you a Vision Zero Hero?

**MAP WITH US!**   **JOIN US!**

*The City of Stamford has initiated a Vision Zero Action Plan to eliminate roadway fatalities by 2032.*

The Action Plan will set forth prioritized strategies for advancing roadway Quick-Builds and capital projects, and other strategic initiatives for reaching this goal. Public engagement for the Plan will commence in April, and includes "Meet on the Street" pop-up events throughout the city, a kick-off public workshop, a demonstration project, and more! The Plan is set to be finished and adopted in early 2025, with the city rolling it into implementation. The project team is currently in the existing conditions analysis phase of the plan, closely analyzing existing plans, policies, and crash data to set the foundation for community discussions.

We invite you to give the team your initial thoughts on traffic safety in Stamford via the Map with Us! link above, and check out the Join Us! link to get those initial public engagements on your calendar. Registration for the large public engagement events will be encouraged.

#### Stamford's High Injury Network

The High Injury Network is a set of corridors and intersections in Stamford with the highest numbers of crashes resulting in serious injuries or fatalities. These locations will be prioritized for targeted projects and strategies to reduce these crashes.

The HIN was developed based on locations with history of severe and fatal crashes, locations with a history of bicycle & pedestrian crashes, as well as roadway & intersection characteristics (street type and signalization). The analysis shows three tiers of priority locations.

- Tier 1 captures 41% of severe and fatal crashes on just 3% of intersections and 4% of roadway miles.
- Tiers 1-3 capture 99% of severe and fatal crash on just 8% of intersections and 15% of roadway miles.