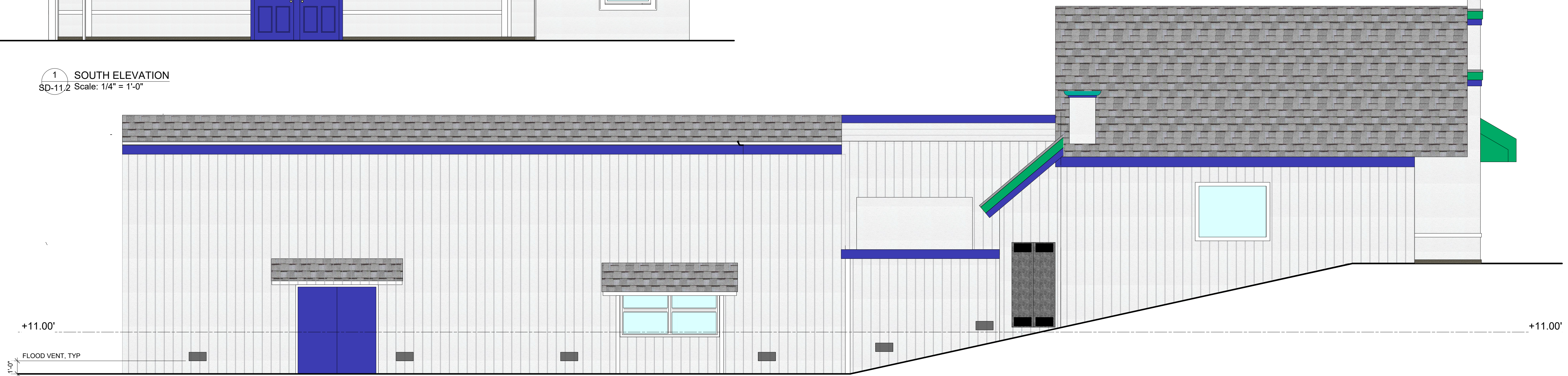


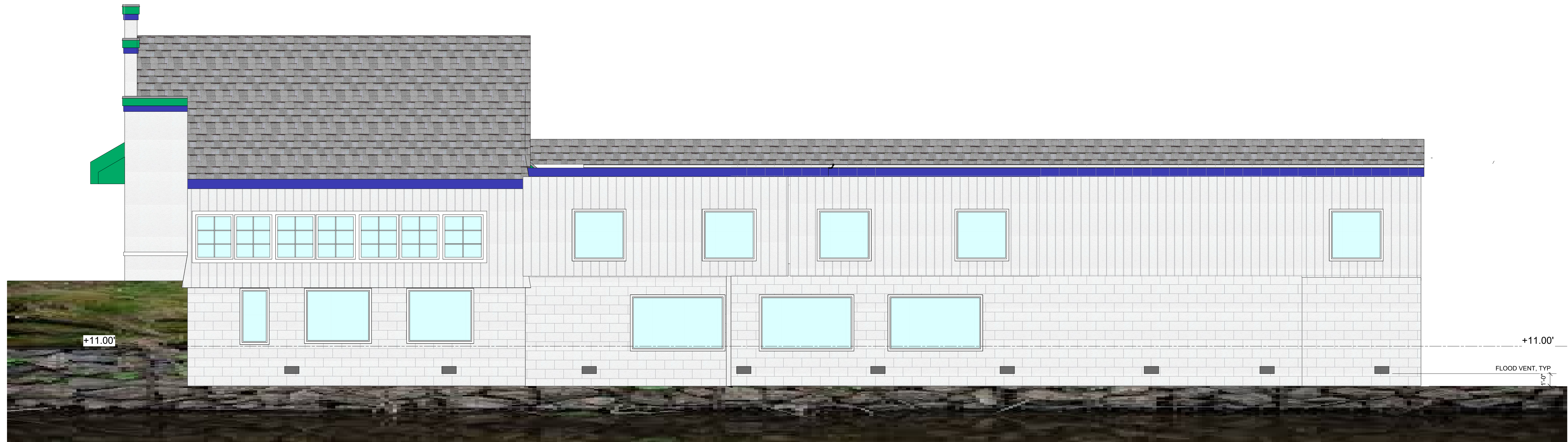
NOTE:
 Flood damage resistant finish materials shall be installed at all floors, walls, etc. below the minimum design elevation of +11.00'.
 All utilities such as electrical outlets, breaker boxes, electrical meters, HVAC equipment, water heaters, shall be located above the minimum design elevation of +11.00'.



1 SOUTH ELEVATION
 SD-11.2 Scale: 1/4" = 1'-0"



2 WEST ELEVATION
 SD-11.2 Scale: 1/4" = 1'-0"



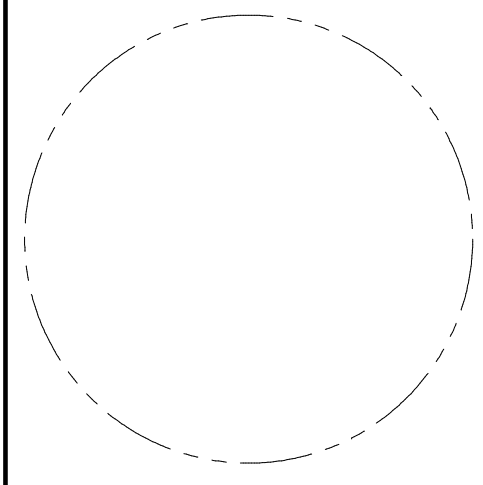
32 EAST ELEVATION
 SD-11.2 Scale: 1/4" = 1'-0"

ARCHITECT:
 LARC ARCHITECTS
 14 COLTON STREET
 WASHINGTON, PA 15360
 PH: 724.224.1407
 SHELDO@LARCARCHITECTS.COM
 HILARY@LARCARCHITECTS.COM

**NAUTILUS BOTANICALS
 EJV1 LLC**
 1308 EAST MAIN STREET,
 STAMFORD, CT

SD: 4/1/24
 DD:
 CD:
 BID:
 PERMIT:
 CONTRACT:
 CONST:

REVISION	



**EXTERIOR
 ELEVATIONS**

SD-11.2