

# Stamford Speed Safety Camera 4/24/24 BOR Meeting

CITY OF  
STAMFORD



Luke Buttenwieser

Transportation  
Planner

Transportation,  
Traffic & Parking  
Bureau

Stamford  
**VISION**  
**ZERO**

# Agenda

- Ordinance Passing
- Where we are in the process
- Federal Highways Administration Speed Safety Camera Peer Exchange
- Site Selection Criteria
- Recommended sites
- Resolution
- Next steps and schedule

# Ordinance Passed

# Thank you!

# Schedule

Subject to change

## Safety Camera Program Timeline

Task	Task Name	Status	Task Description	Nov	Dec	Jan	Feb	Mar	Apr	May	Jun	Jul	Aug	Sep	Oct	Nov	Dec	Jan	Feb	Mar	Apr	May	Jun	Jul	Aug	Sep
				2023	2023	2024	2024	2024	2024	2024	2024	2024	2024	2024	2024	2024	2024	2024	2024	2025	2025	2025	2025	2025	2025	2025
Task 1.1	Best Practice Review	Complete	Review of best practices	█	█																					
Task 1.2	Program Structure Development	Complete	Develop internal framework for camera program		█	█																				
Task 1.3	Internal/External Coordination	Complete				█																				
Task 2.1	DOT Guidance Review	Complete	Review CTDOT Camera Guidance		█	█																				
Task 2.2	Location Planning Analysis	On going	Develop recommended locations for Phase 1 Cameras			█	█																			
Task 2.3	Guidelines and Program Development	On going	Develop and formalize program guidelines			█	█	█																		
Task 2.4	Internal/External Coordination	On going				█	█	█																		
Task 3.1	Legislative	On going	Enabling Ordinance for speed cameras				█	█	█																	
Task 3.2	Operatons Plan Development		Speed Camera Operations Plan						█	█																
Task 3.3	Operations Plan Approval		Review and approval of operations plan							█	█															
Task 3.4	DOT Application		Submit approved plan to DOT								█	█	█													
Task 3.5	Request for Proposals		Advertise a RFP for cameras								█	█														
Task 3.6	Budgeting		Develop budget base don RFP submissions									█	█	█	█	█	█	█	█	█	█	█	█	█	█	
Task 3.7	Procurement/Contracts		Develop and execute vendor contract										█	█	█	█	█	█	█	█	█	█	█	█	█	
Task 3.8	Internal/External Coordination																									
Task 4.1	Equipment Planning, Design, and Installation		Aquire, plan, and install cameras and associated materials																							
Task 4.2	Program Rollout		Go live time																							
Task 4.3	Performance Review, Evaluation, and Reporting		Review and monitoring of program once live																							
Task 4.4	Internal/External Coordination																									

# FHWA Speed Safety Camera Peer Exchange

- 2 day long peer exchange conference
- Expert practitioners from
  - FHWA
  - Colorado DOT
  - Maryland DOT
  - D.C DOT
  - NHTSA
  - MASS DOT
  - Chicago DOT
  - NYCDOT
  - NYS DOT
- Topics discussed
  - Speed management
  - Proven Safety Countermeasures
  - Vendor procurement
  - Violation administration
  - Lessons learned
  - Best practices
  - Latest research and studies
  - Equity
  - Data privacy
  - Site selection
  - Public education
  - Signage



# Site Selection Criteria

## State Criteria

- Crash History
- Average Daily Traffic (ADT)
- Traffic Stop History
- Municipal Poverty Rate
- Roadway Geometry

## City of Stamford Criteria

- Percentage of Students who walk to school
  - Majority of Students walk
- Located on High Injury Network Road
- Demonstrated Speeding issue
  - 85<sup>th</sup> Percentile Speed 6 MPH or greater than posted speed limit

# Proposed Speed Safety Camera Locations

School	Road	Direction	Start	End	Speed Limit	% Students walking	On High Injury Network?	85th Percentile Speed
Cloonan	West North St	West	W. Washington Ave	Anderson St	25 MPH	50	No	31 MPH
Cloonan	West North St	East	Anderson St	W. Washington Ave	25 MPH	50	No	31 MPH
Springdale	Hope St	North	Mulberry St	Mead St	25 MPH	58	Yes	33 MPH
Springdale	Hope St	South	Mead St	Mulberry St	25 MPH	58	Yes	33 MPH
Dolan/Toquam	Toms Rd	West	Hope St	Overbrook Dr	25 MPH	50	No	34 MPH
Dolan/Toquam	Toms Rd	East	Overbrook Dr	Hope St	25 MPH	50	No	34 MPH
Stamford High	Strawberry Hill Ave	North	Hillandale Ave	Holcomb Ave	25 MPH	67	Yes	38 MPH
Stamford High	Strawberry Hill Ave	South	Holcomb Ave	Hillandale Ave	25 MPH	67	Yes	38 MPH
Stark	Glenbrook Road	North	Ely Pl	Crescent St	25 MPH	80	Yes	35 MPH
Stark	Glenbrook Road	South	Crescent St	Ely Pl	25 MPH	80	Yes	35 MPH
K.T Murphy	Cove Road	East	Hobbie St	Avery St	25 MPH	62	Yes	31 MPH
K.T Murphy	Cove Road	West	Avery St	Hobbie St	25 MPH	62	Yes	31 MPH

# Operations Plan

Speed Safety Camera



MAYOR  
**CAROLINE SIMMONS**

DIRECTOR OF OPERATIONS  
**MATT QUIÑONES**  
Email: [mquinones@stamfordct.gov](mailto:mquinones@stamfordct.gov)



TRANSPORTATION BUREAU CHIEF  
**FRANK W. PETISE, P.E.**  
Email: [fpetise@stamfordct.gov](mailto:fpetise@stamfordct.gov)

**OFFICE OF OPERATIONS**  
**TRANSPORTATION, TRAFFIC & PARKING**

Tel: (203) 977-5466/Fax: (203) 977-4004  
Government Center, 888 Washington Blvd., 7<sup>TH</sup> Floor, Stamford, CT 06901

### City of Stamford Automated Traffic Enforcement Safety Device Operations Plan

Date:	Prepared by:	Approved By: <i>Frank W. Petise</i>		
<b>Location Info</b>				
Road	Direction	From	To	Speed Limit
<b>Location type</b>				
School Zone	Pedestrian Safety Zone	Other Area		
<b>Crash History</b>				
On High Injury Network?				
	2021	2022	2023	
Crashes				
<b>Traffic Data</b>				
85 <sup>th</sup> Percentile Speed	Average Daily Traffic		Pedestrian Activity	
<b>Traffic Stop Data</b>				
	2021	2022	2023	
Citywide				
Location				
<b>Census Tract Info. Tract:</b>				
Qualified Census Tract?				
	Poverty Rate		Households with vehicles	
Citywide				
Census tract				
<b>Roadway Geometry</b>				

**Written Justification**

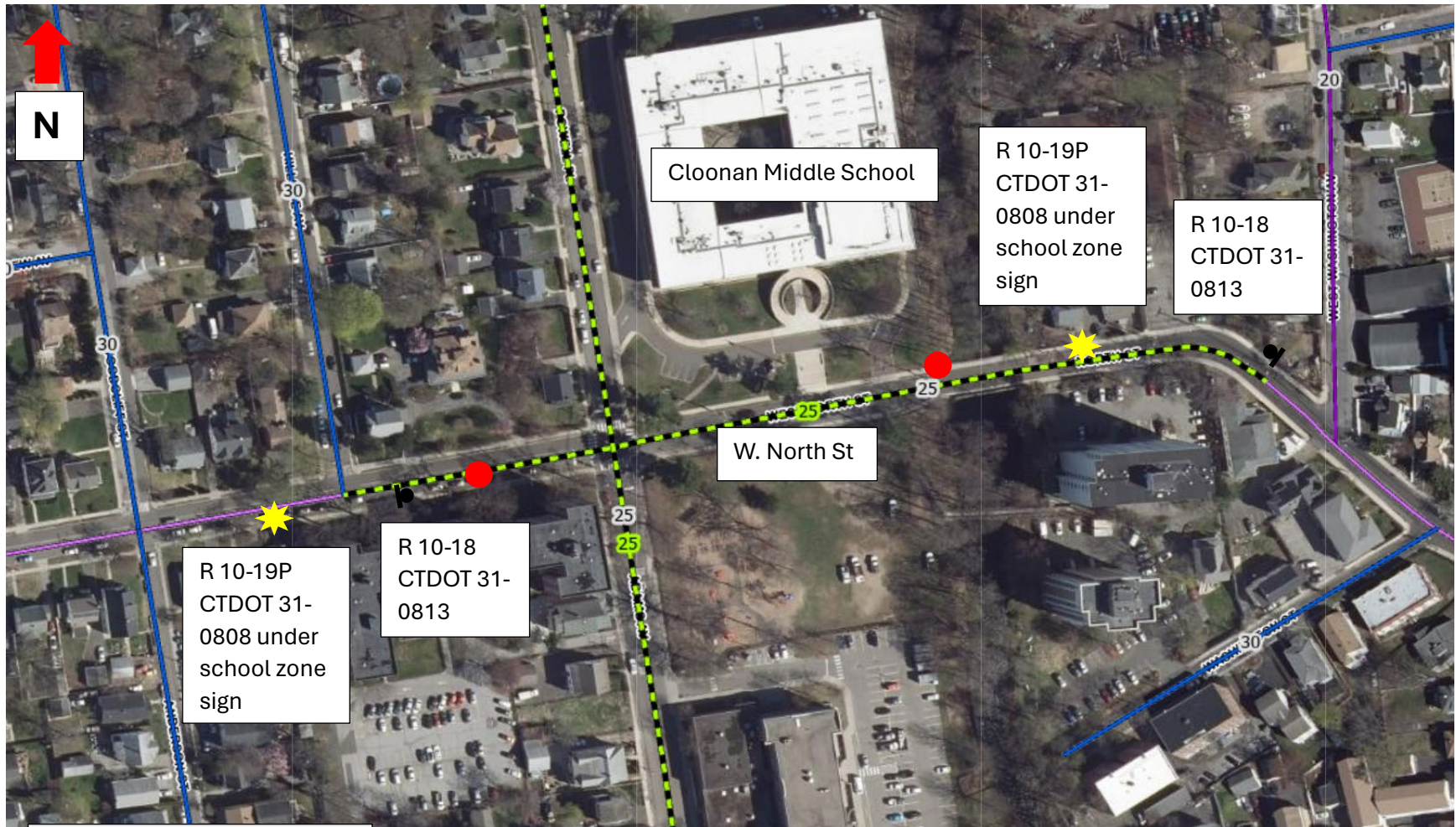
--

**Board of Representatives Approval**




<b>Submitted Date</b>	<b>Transportation Committee Approval</b>	<b>Full Board Approval</b>

<b>Enabling Ordinance</b>	<b>Public Hearing Notice</b>	<b>Approval Minutes</b>	<b>Safety Action Plan</b>

West North Street ATESD Location Map



Key:

-  Sign
-  Approximate ATESD Device Location
-  School Zone Flasher

MAYOR  
**CAROLINE SIMMONS**

DIRECTOR OF OPERATIONS  
**MATT QUIÑONES**  
Email: [mquinones@stamfordct.gov](mailto:mquinones@stamfordct.gov)



TRANSPORTATION BUREAU CHIEF  
**FRANK W. PETISE, P.E.**  
Email: [fpetise@stamfordct.gov](mailto:fpetise@stamfordct.gov)

**OFFICE OF OPERATIONS**  
**TRANSPORTATION, TRAFFIC & PARKING**

Tel: (203) 977-5466/Fax: (203) 977-4004  
Government Center, 888 Washington Blvd., 7<sup>TH</sup> Floor, Stamford, CT 06901

### City of Stamford Automated Traffic Enforcement Safety Device Operations Plan

Date:	Prepared by:	Approved By: <i>Frank W. Petise</i>		
<b>Location Info</b>				
Road	Direction	From	To	Speed Limit
<b>Location type</b>				
School Zone	Pedestrian Safety Zone	Other Area		
<b>Crash History</b>				
On High Injury Network?				
	2021	2022	2023	
Crashes				
<b>Traffic Data</b>				
85 <sup>th</sup> Percentile Speed	Average Daily Traffic		Pedestrian Activity	
<b>Traffic Stop Data</b>				
	2021	2022	2023	
Citywide				
Location				
<b>Census Tract Info. Tract:</b>				
Qualified Census Tract?				
	Poverty Rate		Households with vehicles	
Citywide				
Census tract				
<b>Roadway Geometry</b>				

**Written Justification**

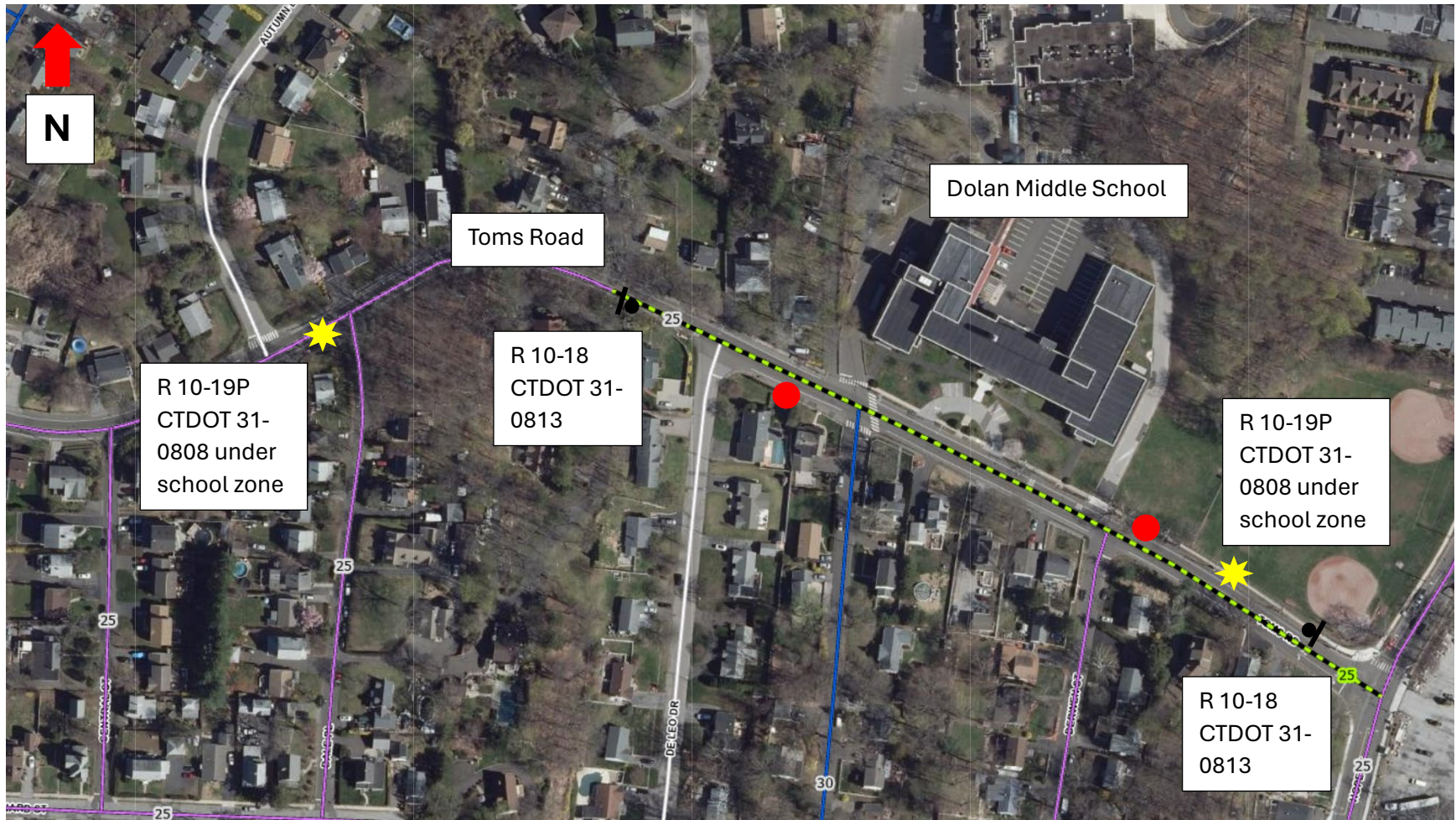
--

**Board of Representatives Approval**




<b>Submitted Date</b>	<b>Transportation Committee Approval</b>	<b>Full Board Approval</b>

<b>Enabling Ordinance</b>	<b>Public Hearing Notice</b>	<b>Approval Minutes</b>	<b>Safety Action Plan</b>

# Toms Road ATESD Location Map



Key:

-  Sign
-  Approximate ATESD Device Location
-  School Zone Flasher

MAYOR  
**CAROLINE SIMMONS**

**CITY OF  
STAMFORD**

TRANSPORTATION BUREAU CHIEF  
**FRANK W. PETISE, P.E.**  
Email: [fpetise@stamfordct.gov](mailto:fpetise@stamfordct.gov)

DIRECTOR OF OPERATIONS  
**MATT QUIÑONES**  
Email: [mquinones@stamfordct.gov](mailto:mquinones@stamfordct.gov)



**OFFICE OF OPERATIONS  
TRANSPORTATION, TRAFFIC & PARKING**

Tel: (203) 977-5466/Fax: (203) 977-4004  
Government Center, 888 Washington Blvd., 7<sup>TH</sup> Floor, Stamford, CT 06901

**City of Stamford Automated Traffic Enforcement Safety Device Operations Plan**

Date:	Prepared by:	Approved By: <i>Frank W. Petise</i>		
<b>Location Info</b>				
Road	Direction	From	To	Speed Limit
<b>Location type</b>				
School Zone	Pedestrian Safety Zone	Other Area		
<b>Crash History</b>				
On High Injury Network?				
	2021	2022	2023	
Crashes				
<b>Traffic Data</b>				
85 <sup>th</sup> Percentile Speed	Average Daily Traffic	Pedestrian Activity		
<b>Traffic Stop Data</b>				
	2021	2022	2023	
Citywide				
Location				
<b>Census Tract Info. Tract:</b>				
Qualified Census Tract?				
	Poverty Rate	Households with vehicles		
Citywide				
Census tract				
<b>Roadway Geometry</b>				

**Written Justification**

--

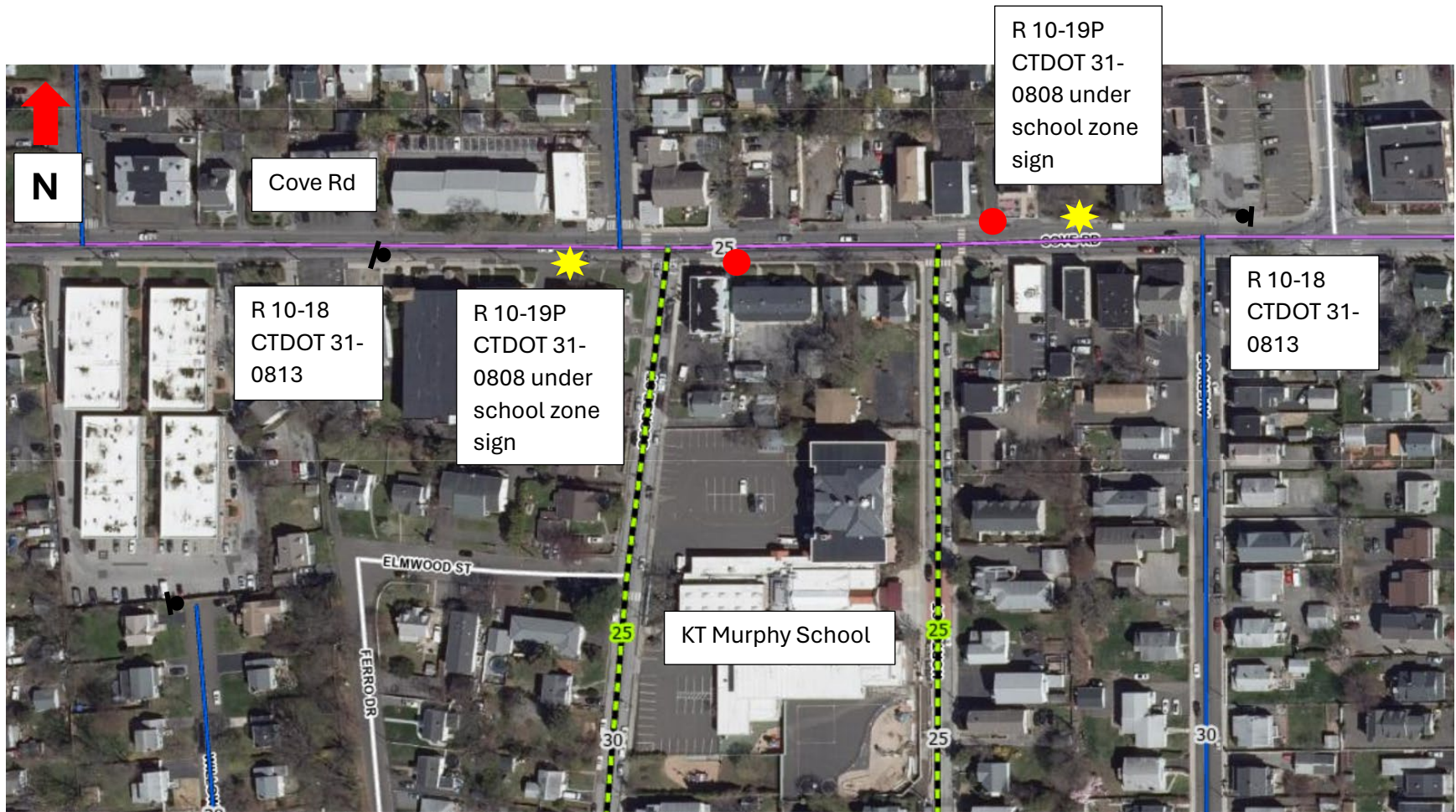
**Board of Representatives Approval**

<b>Submitted Date</b>	<b>Transportation Committee Approval</b>	<b>Full Board Approval</b>




<b>Enabling Ordinance</b>	<b>Public Hearing Notice</b>	<b>Approval Minutes</b>	<b>Safety Action Plan</b>



Cove Road ATESD Location Map



Key:

-  Sign
-  Approximate ATESD Device Location
-  School Zone Flasher

MAYOR  
**CAROLINE SIMMONS**

DIRECTOR OF OPERATIONS  
**MATT QUIÑONES**  
Email: [mquinones@stamfordct.gov](mailto:mquinones@stamfordct.gov)



TRANSPORTATION BUREAU CHIEF  
**FRANK W. PETISE, P.E.**  
Email: [fpetise@stamfordct.gov](mailto:fpetise@stamfordct.gov)

**OFFICE OF OPERATIONS**  
**TRANSPORTATION, TRAFFIC & PARKING**

Tel: (203) 977-5466/Fax: (203) 977-4004  
Government Center, 888 Washington Blvd., 7<sup>TH</sup> Floor, Stamford, CT 06901

### City of Stamford Automated Traffic Enforcement Safety Device Operations Plan

Date:	Prepared by:	Approved By: <i>Frank W. Petise</i>		
<b>Location Info</b>				
Road	Direction	From	To	Speed Limit
<b>Location type</b>				
School Zone	Pedestrian Safety Zone	Other Area		
<b>Crash History</b>				
On High Injury Network?				
	2021	2022	2023	
Crashes				
<b>Traffic Data</b>				
85 <sup>th</sup> Percentile Speed	Average Daily Traffic		Pedestrian Activity	
<b>Traffic Stop Data</b>				
	2021	2022	2023	
Citywide				
Location				
<b>Census Tract Info. Tract:</b>				
Qualified Census Tract?				
	Poverty Rate	Households with vehicles		
Citywide				
Census tract				
<b>Roadway Geometry</b>				

**Written Justification**

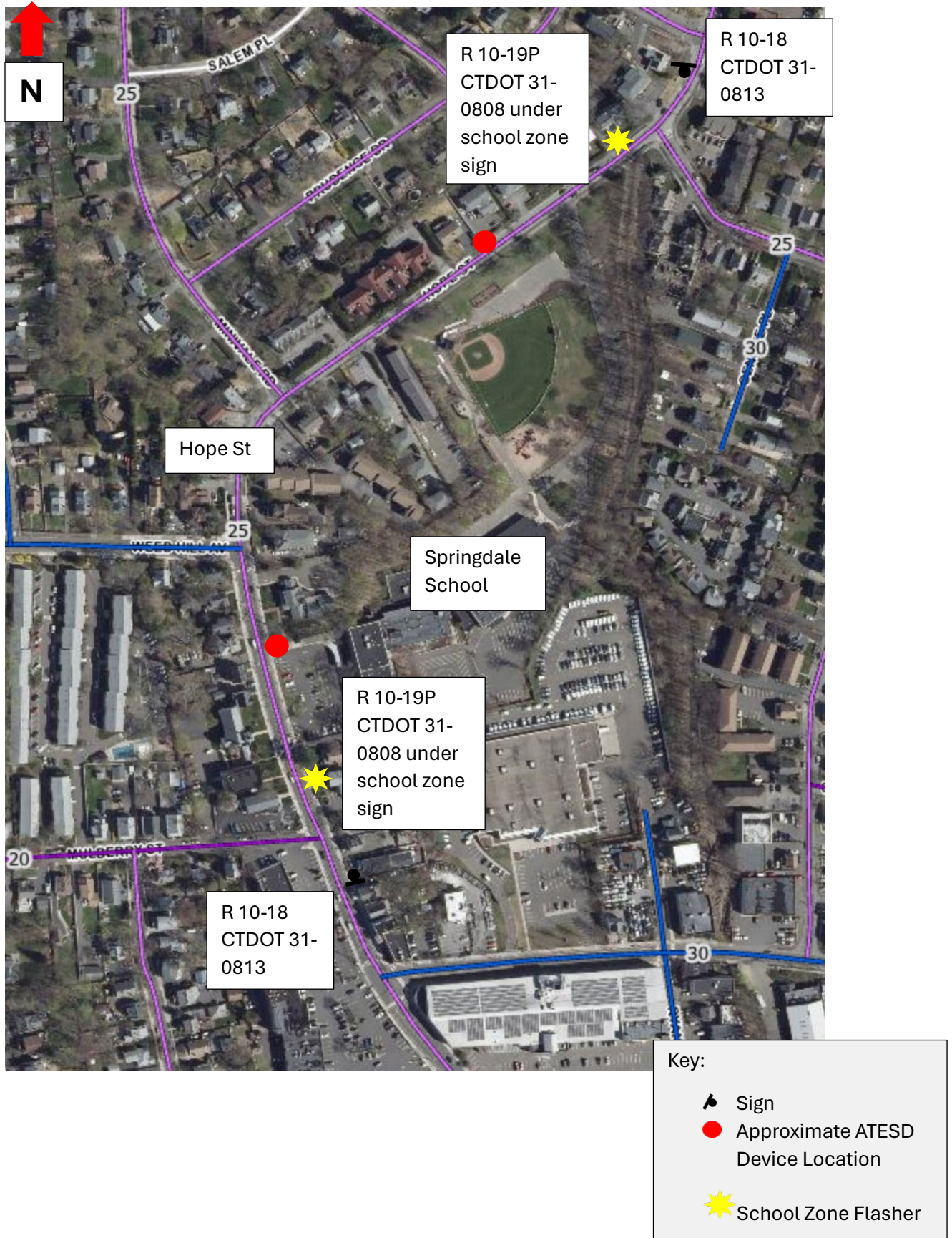
--

**Board of Representatives Approval**

<b>Submitted Date</b>	<b>Transportation Committee Approval</b>	<b>Full Board Approval</b>

<b>Enabling Ordinance</b>	<b>Public Hearing Notice</b>	<b>Approval Minutes</b>	<b>Safety Action Plan</b>

Hope Street ATESD Location Map



MAYOR  
**CAROLINE SIMMONS**

DIRECTOR OF OPERATIONS  
**MATT QUIÑONES**  
Email: [mquinones@stamfordct.gov](mailto:mquinones@stamfordct.gov)



TRANSPORTATION BUREAU CHIEF  
**FRANK W. PETISE, P.E.**  
Email: [fpetise@stamfordct.gov](mailto:fpetise@stamfordct.gov)

**OFFICE OF OPERATIONS**  
**TRANSPORTATION, TRAFFIC & PARKING**

Tel: (203) 977-5466/Fax: (203) 977-4004  
Government Center, 888 Washington Blvd., 7<sup>TH</sup> Floor, Stamford, CT 06901

### City of Stamford Automated Traffic Enforcement Safety Device Operations Plan

Date:	Prepared by:	Approved By: <i>Frank W. Petise</i>		
<b>Location Info</b>				
Road	Direction	From	To	Speed Limit
<b>Location type</b>				
School Zone	Pedestrian Safety Zone	Other Area		
<b>Crash History</b>				
On High Injury Network?				
	2021	2022	2023	
Crashes				
<b>Traffic Data</b>				
85 <sup>th</sup> Percentile Speed	Average Daily Traffic		Pedestrian Activity	
<b>Traffic Stop Data</b>				
	2021	2022	2023	
Citywide				
Location				
<b>Census Tract Info. Tract:</b>				
Qualified Census Tract?				
	Poverty Rate		Households with vehicles	
Citywide				
Census tract				
<b>Roadway Geometry</b>				

**Written Justification**

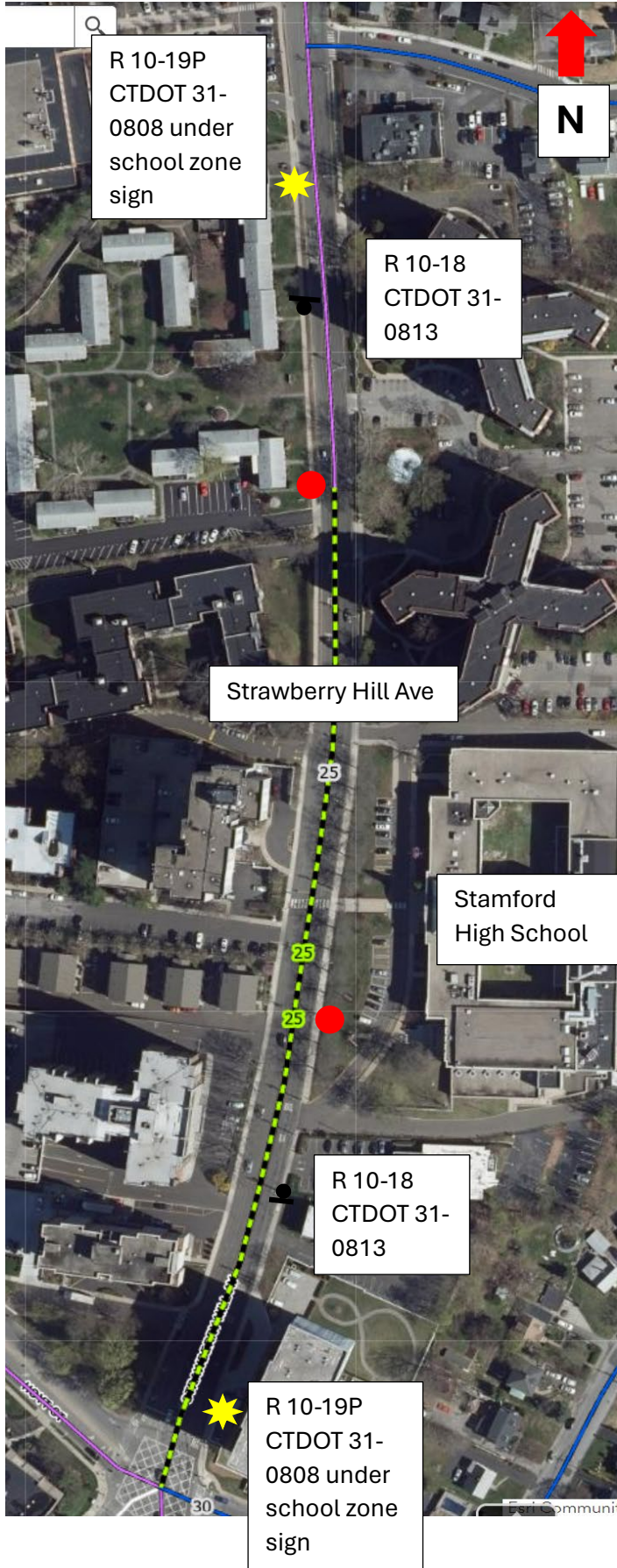
--

**Board of Representatives Approval**




<b>Submitted Date</b>	<b>Transportation Committee Approval</b>	<b>Full Board Approval</b>

<b>Enabling Ordinance</b>	<b>Public Hearing Notice</b>	<b>Approval Minutes</b>	<b>Safety Action Plan</b>

Strawberry Hill Ave ATESD Location Map



Key:

-  Sign
-  Approximate ATESD Device Location
-  School Zone Flasher

MAYOR  
**CAROLINE SIMMONS**

DIRECTOR OF OPERATIONS  
**MATT QUIÑONES**  
Email: [mquinones@stamfordct.gov](mailto:mquinones@stamfordct.gov)



TRANSPORTATION BUREAU CHIEF  
**FRANK W. PETISE, P.E.**  
Email: [fpetise@stamfordct.gov](mailto:fpetise@stamfordct.gov)

**OFFICE OF OPERATIONS**  
**TRANSPORTATION, TRAFFIC & PARKING**

Tel: (203) 977-5466/Fax: (203) 977-4004  
Government Center, 888 Washington Blvd., 7<sup>TH</sup> Floor, Stamford, CT 06901

### City of Stamford Automated Traffic Enforcement Safety Device Operations Plan

Date:	Prepared by:	Approved By: <i>Frank W. Petise</i>		
<b>Location Info</b>				
Road	Direction	From	To	Speed Limit
<b>Location type</b>				
School Zone	Pedestrian Safety Zone	Other Area		
<b>Crash History</b>				
On High Injury Network?				
	2021	2022	2023	
Crashes				
<b>Traffic Data</b>				
85 <sup>th</sup> Percentile Speed	Average Daily Traffic		Pedestrian Activity	
<b>Traffic Stop Data</b>				
	2021	2022	2023	
Citywide				
Location				
<b>Census Tract Info. Tract:</b>				
Qualified Census Tract?				
	Poverty Rate		Households with vehicles	
Citywide				
Census tract				
<b>Roadway Geometry</b>				



**Written Justification**

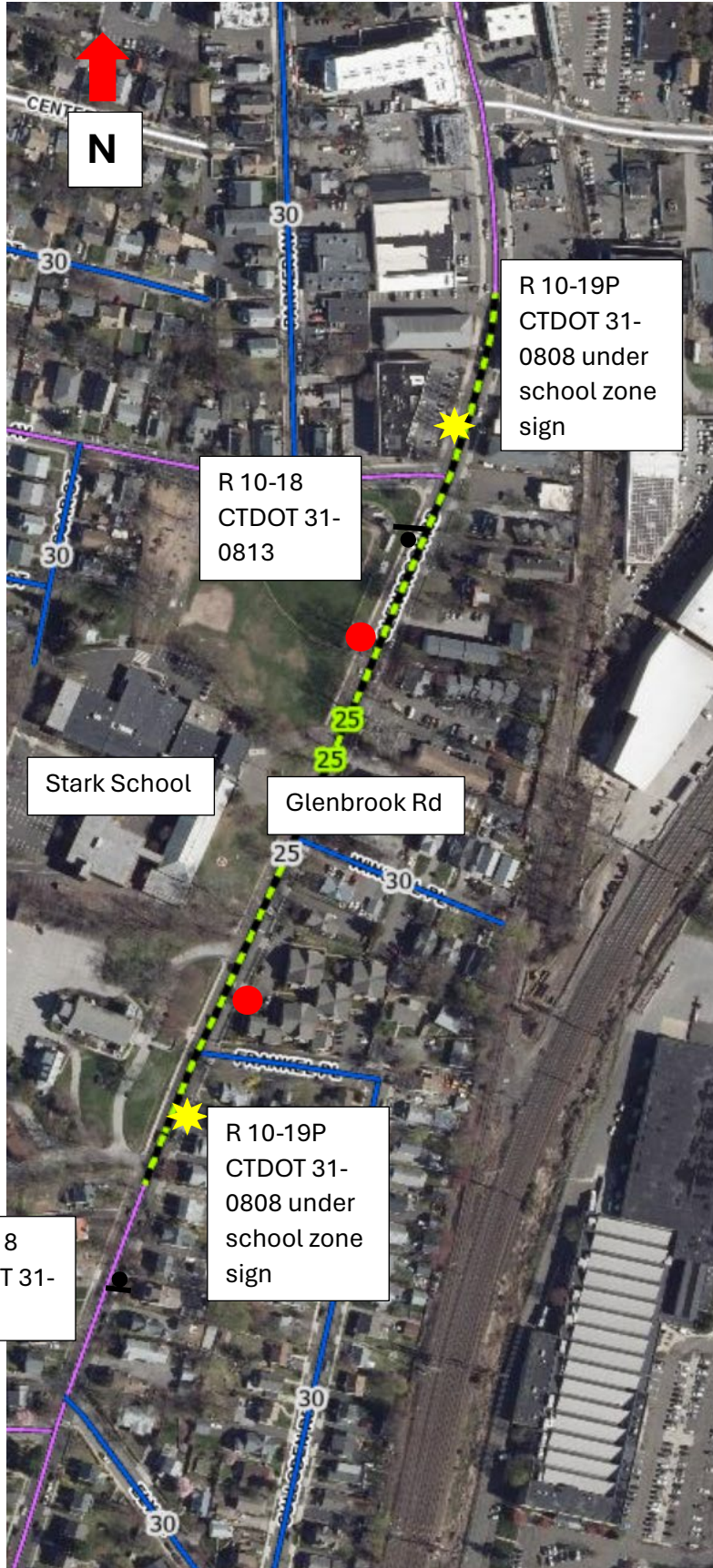
--

**Board of Representatives Approval**




<b>Submitted Date</b>	<b>Transportation Committee Approval</b>	<b>Full Board Approval</b>

<b>Enabling Ordinance</b>	<b>Public Hearing Notice</b>	<b>Approval Minutes</b>	<b>Safety Action Plan</b>

# Glenbrook Road ATESD Location Map



Key:

-  Sign
-  Approximate ATESD Device Location
-  School Zone Flasher

## Attachment A (Required Signage)

Sign detail options for "Photo Enforced" to be installed *below a speed limit sign*

**SIGN DETAIL**  
1:15

**NOTES:**  
- OSTA APPROVAL REQUIRED  
- MOUNT BELOW REGULATORY SPEED LIMIT SIGN 31-5505 (24"x30")  
FOR SINGLE LANE OR 31-5504 (30"x36") FOR MULTI-LANE ROADS

SIGN NUMBER	31-0808				
PANEL SIZE	2'-0" x 2'-0"				
TOTAL AREA	4.0 Sq.Ft.				
MUTCD	R10-19P (CT)				
BDR INSET/WIDTH	0.38"/0.63"				
CORNER RADIUS	1.5"				
BACKGROUND	TYPE: XI COLOR: White				
LEGEND/BORDER	TYPE: XI COLOR: Black/Black				
REFER TO CATALOG OF SIGNS FOR SHEETING TYPE WHEN COLOR IS BLACK TYPE IS "PLAIN".					
SYMBOL	ROTATION	X	Y	WID	HT
Camera	0	7.9	12.5	8.3	9

Dimensions are in Inches  
Material : 0,080" Thick Sheet Aluminum  
Ground Mounted

**REV'D /**

File name: 31-0808 Printed: 10/3/2023

LETTER POSITIONS (X)										LENGTH	SERIES/SIZE
P	H	O	T	O							D 2000
6	8.5	11.1	13.7	15.9						12	3
E	N	F	O	R	C	E	D				D 2000
2.2	4.5	7.3	9.5	12.3	14.8	17.4	19.8			19.7	3

**SIGN DETAIL**  
1:15

**NOTES:**  
- OSTA APPROVAL REQUIRED  
- MOUNT BELOW REGULATORY SPEED LIMIT SIGN 31-5506 (36"x48")  
FOR EXPRESSWAYS

SIGN NUMBER	31-0814				
PANEL SIZE	3'-0" x 2'-6"				
TOTAL AREA	7.5 Sq.Ft.				
MUTCD	R10-19P				
BDR INSET/WIDTH	0.38"/0.63"				
CORNER RADIUS	1.5"				
BACKGROUND	TYPE: XI COLOR: White				
LEGEND/BORDER	TYPE: XI COLOR: Black/Black				
REFER TO CATALOG OF SIGNS FOR SHEETING TYPE WHEN COLOR IS BLACK TYPE IS "PLAIN".					
SYMBOL	ROTATION	X	Y	WID	HT
Camera	0	12.5	15.5	11	12

Dimensions are in Inches  
Material : 0,080" Thick Sheet Aluminum  
Ground Mounted

**REV'D /**

File name: 31-0814 Printed: 10/3/2023

LETTER POSITIONS (X)										LENGTH	SERIES/SIZE
P	H	O	T	O							D 2000
9.9	13.3	16.9	20.2	23.2						16.1	4
E	N	F	O	R	C	E	D				D 2000
4.8	8	11.7	14.7	18.4	21.7	25.3	28.5			26.4	4

# Sign detail options for “Speed Limit –Photo Enforced” *stand alone sign*

**SIGN DETAIL**  
1:15

NOTES:  
- OSTA APPROVAL REQUIRED  
- FOR USE ON SINGLE LANE AND MULTI-LANE ROADS

Dimensions are in Inches  
Material : 0.080" Thick Sheet Aluminum  
Ground Mounted

REV'D /

SIGN NUMBER	31-0813				
PANEL SIZE	3'-0" x 2'-0"				
TOTAL AREA	6.0 Sq.Ft.				
MUTCD	R10-18				
BDR INSET/WIDTH	0.38"/0.63"				
CORNER RADIUS	1.5"				
BACKGROUND	TYPE: XI COLOR: White				
LEGEND/BORDER	TYPE: XI COLOR: Black/Black				
* REFER TO CATALOG OF SIGNS FOR SHEETING TYPE WHEN COLOR IS BLACK TYPE IS "PLAIN".					
SYMBOL	ROTATION	X	Y	WID	HT
Camera	0	13.9	12.5	8.3	9

LETTER POSITIONS (X)															LENGTH	SERIES/SIZE			
S	P	E	E	D		L	I	M	I	T							C 2000		
7.4	9.6	11.8	13.9	15.9	17.6	20.6	22.5	23.6	26.3	27.1							21.3	3	
P	H	O	T	O		E	N	F	O	R	C	E	D					C 2000	
3	5.3	7.5	9.7	11.6	13.3	16.3	18.3	20.6	22.5	24.9	27	29.3	31.3					30	3

**SIGN DETAIL**  
1:20

NOTES:  
- OSTA APPROVAL REQUIRED  
- FOR USE ON EXPRESSWAYS

Dimensions are in Inches  
Material : 0.100" Thick Sheet Aluminum  
Ground Mounted

REV'D /

SIGN NUMBER	31-0820				
PANEL SIZE	4'-0" x 2'-6"				
TOTAL AREA	10.0 Sq.Ft.				
MUTCD	R10-18				
BDR INSET/WIDTH	0.63"/0.75"				
CORNER RADIUS	1.88"				
BACKGROUND	TYPE: XI COLOR: White				
LEGEND/BORDER	TYPE: XI COLOR: Black/Black				
* REFER TO CATALOG OF SIGNS FOR SHEETING TYPE WHEN COLOR IS BLACK TYPE IS "PLAIN".					
SYMBOL	ROTATION	X	Y	WID	HT
Camera	0	18.5	15.5	11	12

LETTER POSITIONS (X)																LENGTH	SERIES/SIZE		
S	P	E	E	D		L	I	M	I	T								C 2000	
9.9	12.8	15.8	18.5	21.3	23.5	27.5	30.1	31.5	35.1	36.2								28.4	4
P	H	O	T	O		E	N	F	O	R	C	E	D						C 2000
4	7.1	10.1	12.9	15.4	17.8	21.7	24.5	27.6	30.1	33.2	36.1	39.1	41.8					40	4

# Next Steps

- BOR
  - Discuss draft plans and locations resolution
  - If approved, go to public hearing
- City
  - Develop RFP Scope and go out to Bid
  - Build out webpage
  - Set up meetings with other municipalities
  - Refine internal guidelines



# Stamford VISION ZERO

## Thank You

Luke Bittenwieser

(203) 977-1742

[Lbittenwieser@StamfordCT.gov](mailto:Lbittenwieser@StamfordCT.gov)

[stamfordct.gov/government/vision-zero-927](http://stamfordct.gov/government/vision-zero-927)

