

Capital Project Appropriation Request

4/23/2024

FY 23/24			Oracle Date	2024-04-22
			Commitments	\$0.00
Project:	CP4000011	Julia Stark - LTFP DM/AR	Obligations	\$63,090.00
Agency:	0900	Board of Education: Capital	YTD Balance	\$12,722,145.00
Total Request: \$4,158,249.00			Amount Available	\$17,145.00
			Unfunded	\$12,705,000.00

Part A - Description of Request

The City is seeking a grant for Asset Renewal and Improvements to Julia A. Stark Elementary School, the project cost of \$14,347,081 of which the City is seeking reimbursement of 60%. This requires an adjustment to the grant authorized portion of CP4000011.


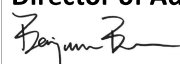


Part B - Appropriation Request Detail

Fund Source	FY 23/24	Capital Forecast						Total
	Amount	FY 24/25	FY 25/26	FY 26/27	FY 27/28	FY 28/29	FY 29/30	
State Grant	4,158,249.00	0	0	0	0	0	0	4,158,249.00
Total	\$4,158,249.00	\$0	\$0	\$0	\$0	\$0	\$0	\$4,158,249.00

Part C - Project History

Fiscal Year	Authorizations	Encumbered	Expenditure	Balance
2024	12,800,000.00	63,090.00	14,765.00	12,722,145.00
Total	\$12,800,000.00	\$63,090.00	\$14,765.00	\$12,722,145.00

Part D - Approvals

Preparer <i>OPM Dept</i>	Date 04/23/24	OPM Director/OPM Asst Director  <small>Eida Sinani (Apr 25, 2024 17:08 EDT)</small>	Date Apr 25, 2024
Department Head <i>Katherine LoBalbo</i>	Date Apr 25, 2024	Director of Administration 	Date Apr 29, 2024
Director  <small>Matt Quiñones (Apr 25, 2024 16:52 EDT)</small>	Date Apr 25, 2024	Mayor 	Date Apr 30, 2024

JULIA STARK ELEMENTARY SCHOOL

398 GLENBROOK ROAD, STAMFORD, CT
STAMFORD PUBLIC SCHOOLS

ALTERATIONS PROJECT
 ABATEMENT, ACCESSIBILITY, ROOF, WINDOW & EXTERIOR DOOR REPLACEMENT
 CT STATE PROJECT #: TBD

DRAWING SCHEDULE

D-010	GENERAL NOTES
D-020	GROUND FLOOR DEMOLITION
D-030	GROUND FLOOR CONSTRUCTION
A-100	GROUND FLOOR PLAN - CONSTRUCTION
A-200	BUILDING ELEVATIONS
A-300	BUILDING ELEVATIONS
A-305	BUILDING ELEVATIONS
A-350	BUILDING ELEVATIONS



GENERAL NOTES - COVER

1. REFER TO THE FOLLOWING REPORT FOR ADDITIONAL INFORMATION ON EXISTING CONDITIONS:
 JULIA STARK ELEMENTARY SCHOOL, EXISTING CONDITIONS REPORT AND EDUCATIONAL SPECIFICATION
 REPORT, PREPARED BY PERKINS EASTMAN ARCHITECTS, 677 WASHINGTON BLVD., STAMFORD, CT 06901
 DATED 10/20/2020. THE REPORT IS AVAILABLE AT: <https://www.perkins-eastman.com/projects/education/julia-stark-elementary-school>
 2. THE ARCHITECT HAS CONDUCTED VISUAL INSPECTIONS OF THE EXISTING BUILDING AND HAS OBSERVED THE EXISTING CONDITIONS AS NOTED IN THE REPORT.
 3. THE ARCHITECT HAS CONDUCTED VISUAL INSPECTIONS OF THE EXISTING BUILDING AND HAS OBSERVED THE EXISTING CONDITIONS AS NOTED IN THE REPORT.
 4. THE ARCHITECT HAS CONDUCTED VISUAL INSPECTIONS OF THE EXISTING BUILDING AND HAS OBSERVED THE EXISTING CONDITIONS AS NOTED IN THE REPORT.
 5. THE ARCHITECT HAS CONDUCTED VISUAL INSPECTIONS OF THE EXISTING BUILDING AND HAS OBSERVED THE EXISTING CONDITIONS AS NOTED IN THE REPORT.
 6. THE ARCHITECT HAS CONDUCTED VISUAL INSPECTIONS OF THE EXISTING BUILDING AND HAS OBSERVED THE EXISTING CONDITIONS AS NOTED IN THE REPORT.
 7. THE ARCHITECT HAS CONDUCTED VISUAL INSPECTIONS OF THE EXISTING BUILDING AND HAS OBSERVED THE EXISTING CONDITIONS AS NOTED IN THE REPORT.
 8. THE ARCHITECT HAS CONDUCTED VISUAL INSPECTIONS OF THE EXISTING BUILDING AND HAS OBSERVED THE EXISTING CONDITIONS AS NOTED IN THE REPORT.

draft



NO.	DESCRIPTION	QTY
1
2
3
4
5
6
7
8
9
10
11
12
13
14
15
16
17
18
19
20
21
22
23
24
25
26
27
28
29
30
31
32
33
34
35
36
37
38
39
40
41
42
43
44
45
46
47
48
49
50
51
52
53
54
55
56
57
58
59
60
61
62
63
64
65
66
67
68
69
70
71
72
73
74
75
76
77
78
79
80
81
82
83
84
85
86
87
88
89
90
91
92
93
94
95
96
97
98
99
100

SECOND FLOOR PLUMBING FIXTURES

CAMPUS	LAVATER CLOSETS & URINALS		LAVATORIES	
	SEX	QUANTITY	SEX	QUANTITY
CAMPUS 1	MALE	2	MALE	2
	FEMALE	2	FEMALE	2
CAMPUS 2	MALE	2	MALE	2
	FEMALE	2	FEMALE	2
CAMPUS 3	MALE	2	MALE	2
	FEMALE	2	FEMALE	2
CAMPUS 4	MALE	2	MALE	2
	FEMALE	2	FEMALE	2
CAMPUS 5	MALE	2	MALE	2
	FEMALE	2	FEMALE	2
CAMPUS 6	MALE	2	MALE	2
	FEMALE	2	FEMALE	2
CAMPUS 7	MALE	2	MALE	2
	FEMALE	2	FEMALE	2
CAMPUS 8	MALE	2	MALE	2
	FEMALE	2	FEMALE	2
CAMPUS 9	MALE	2	MALE	2
	FEMALE	2	FEMALE	2
CAMPUS 10	MALE	2	MALE	2
	FEMALE	2	FEMALE	2
CAMPUS 11	MALE	2	MALE	2
	FEMALE	2	FEMALE	2
CAMPUS 12	MALE	2	MALE	2
	FEMALE	2	FEMALE	2
CAMPUS 13	MALE	2	MALE	2
	FEMALE	2	FEMALE	2
CAMPUS 14	MALE	2	MALE	2
	FEMALE	2	FEMALE	2
CAMPUS 15	MALE	2	MALE	2
	FEMALE	2	FEMALE	2
CAMPUS 16	MALE	2	MALE	2
	FEMALE	2	FEMALE	2
CAMPUS 17	MALE	2	MALE	2
	FEMALE	2	FEMALE	2
CAMPUS 18	MALE	2	MALE	2
	FEMALE	2	FEMALE	2
CAMPUS 19	MALE	2	MALE	2
	FEMALE	2	FEMALE	2
CAMPUS 20	MALE	2	MALE	2
	FEMALE	2	FEMALE	2
CAMPUS 21	MALE	2	MALE	2
	FEMALE	2	FEMALE	2
CAMPUS 22	MALE	2	MALE	2
	FEMALE	2	FEMALE	2
CAMPUS 23	MALE	2	MALE	2
	FEMALE	2	FEMALE	2
CAMPUS 24	MALE	2	MALE	2
	FEMALE	2	FEMALE	2
CAMPUS 25	MALE	2	MALE	2
	FEMALE	2	FEMALE	2
CAMPUS 26	MALE	2	MALE	2
	FEMALE	2	FEMALE	2
CAMPUS 27	MALE	2	MALE	2
	FEMALE	2	FEMALE	2
CAMPUS 28	MALE	2	MALE	2
	FEMALE	2	FEMALE	2
CAMPUS 29	MALE	2	MALE	2
	FEMALE	2	FEMALE	2
CAMPUS 30	MALE	2	MALE	2
	FEMALE	2	FEMALE	2
CAMPUS 31	MALE	2	MALE	2
	FEMALE	2	FEMALE	2
CAMPUS 32	MALE	2	MALE	2
	FEMALE	2	FEMALE	2
CAMPUS 33	MALE	2	MALE	2
	FEMALE	2	FEMALE	2
CAMPUS 34	MALE	2	MALE	2
	FEMALE	2	FEMALE	2
CAMPUS 35	MALE	2	MALE	2
	FEMALE	2	FEMALE	2
CAMPUS 36	MALE	2	MALE	2
	FEMALE	2	FEMALE	2
CAMPUS 37	MALE	2	MALE	2
	FEMALE	2	FEMALE	2
CAMPUS 38	MALE	2	MALE	2
	FEMALE	2	FEMALE	2
CAMPUS 39	MALE	2	MALE	2
	FEMALE	2	FEMALE	2
CAMPUS 40	MALE	2	MALE	2
	FEMALE	2	FEMALE	2
CAMPUS 41	MALE	2	MALE	2
	FEMALE	2	FEMALE	2
CAMPUS 42	MALE	2	MALE	2
	FEMALE	2	FEMALE	2
CAMPUS 43	MALE	2	MALE	2
	FEMALE	2	FEMALE	2
CAMPUS 44	MALE	2	MALE	2
	FEMALE	2	FEMALE	2
CAMPUS 45	MALE	2	MALE	2
	FEMALE	2	FEMALE	2
CAMPUS 46	MALE	2	MALE	2
	FEMALE	2	FEMALE	2
CAMPUS 47	MALE	2	MALE	2
	FEMALE	2	FEMALE	2
CAMPUS 48	MALE	2	MALE	2
	FEMALE	2	FEMALE	2
CAMPUS 49	MALE	2	MALE	2
	FEMALE	2	FEMALE	2
CAMPUS 50	MALE	2	MALE	2
	FEMALE	2	FEMALE	2
CAMPUS 51	MALE	2	MALE	2
	FEMALE	2	FEMALE	2
CAMPUS 52	MALE	2	MALE	2
	FEMALE	2	FEMALE	2
CAMPUS 53	MALE	2	MALE	2
	FEMALE	2	FEMALE	2
CAMPUS 54	MALE	2	MALE	2
	FEMALE	2	FEMALE	2
CAMPUS 55	MALE	2	MALE	2
	FEMALE	2	FEMALE	2
CAMPUS 56	MALE	2	MALE	2
	FEMALE	2	FEMALE	2
CAMPUS 57	MALE	2	MALE	2
	FEMALE	2	FEMALE	2
CAMPUS 58	MALE	2	MALE	2
	FEMALE	2	FEMALE	2
CAMPUS 59	MALE	2	MALE	2
	FEMALE	2	FEMALE	2
CAMPUS 60	MALE	2	MALE	2
	FEMALE	2	FEMALE	2
CAMPUS 61	MALE	2	MALE	2
	FEMALE	2	FEMALE	2
CAMPUS 62	MALE	2	MALE	2
	FEMALE	2	FEMALE	2
CAMPUS 63	MALE	2	MALE	2
	FEMALE	2	FEMALE	2
CAMPUS 64	MALE	2	MALE	2
	FEMALE	2	FEMALE	2
CAMPUS 65	MALE	2	MALE	2
	FEMALE	2	FEMALE	2
CAMPUS 66	MALE	2	MALE	2
	FEMALE	2	FEMALE	2
CAMPUS 67	MALE	2	MALE	2
	FEMALE	2	FEMALE	2
CAMPUS 68	MALE	2	MALE	2
	FEMALE	2	FEMALE	2
CAMPUS 69	MALE	2	MALE	2
	FEMALE	2	FEMALE	2
CAMPUS 70	MALE	2	MALE	2
	FEMALE	2	FEMALE	2
CAMPUS 71	MALE	2	MALE	2
	FEMALE	2	FEMALE	2
CAMPUS 72	MALE	2	MALE	2
	FEMALE	2	FEMALE	2
CAMPUS 73	MALE	2	MALE	2
	FEMALE	2	FEMALE	2
CAMPUS 74	MALE	2	MALE	2
	FEMALE	2	FEMALE	2
CAMPUS 75	MALE	2	MALE	2
	FEMALE	2	FEMALE	2
CAMPUS 76	MALE	2	MALE	2
	FEMALE	2	FEMALE	2
CAMPUS 77	MALE	2	MALE	2
	FEMALE	2	FEMALE	2
CAMPUS 78	MALE	2	MALE	2
	FEMALE	2	FEMALE	2
CAMPUS 79	MALE	2	MALE	2
	FEMALE	2	FEMALE	2
CAMPUS 80	MALE	2	MALE	2
	FEMALE	2	FEMALE	2
CAMPUS 81	MALE	2	MALE	2
	FEMALE	2	FEMALE	2
CAMPUS 82	MALE	2	MALE	2
	FEMALE	2	FEMALE	2
CAMPUS 83	MALE	2	MALE	2
	FEMALE	2	FEMALE	2
CAMPUS 84	MALE	2	MALE	2
	FEMALE	2	FEMALE	2
CAMPUS 85	MALE	2	MALE	2
	FEMALE	2	FEMALE	2
CAMPUS 86	MALE	2	MALE	2
	FEMALE	2	FEMALE	2
CAMPUS 87	MALE	2	MALE	2
	FEMALE	2	FEMALE	2
CAMPUS 88	MALE	2	MALE	2
	FEMALE	2	FEMALE	2
CAMPUS 89	MALE	2	MALE	2
	FEMALE	2	FEMALE	2
CAMPUS 90	MALE	2	MALE	2
	FEMALE	2	FEMALE	2
CAMPUS 91	MALE	2	MALE	2
	FEMALE	2	FEMALE	2
CAMPUS 92	MALE	2	MALE	2
	FEMALE	2	FEMALE	2
CAMPUS 93	MALE	2	MALE	2
	FEMALE	2	FEMALE	2
CAMPUS 94	MALE	2	MALE	2
	FEMALE	2	FEMALE	2
CAMPUS 95	MALE	2	MALE	2
	FEMALE	2	FEMALE	2
CAMPUS 96	MALE	2	MALE	2
	FEMALE	2	FEMALE	2
CAMPUS 97	MALE	2	MALE	2
	FEMALE	2	FEMALE	2
CAMPUS 98	MALE	2	MALE	2
	FEMALE	2	FEMALE	2
CAMPUS 99	MALE	2	MALE	2
	FEMALE	2	FEMALE	2
CAMPUS 100	MALE	2	MALE	2
	FEMALE	2	FEMALE	2

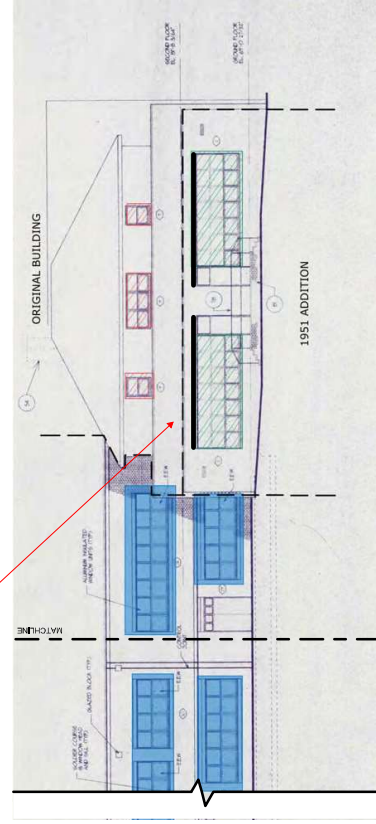
GENERAL NOTES - CONSTRUCTION

- ALL FINISHES TO BE AS SHOWN ON THE FINISH SCHEDULE.
- ALL WORK TO BE IN ACCORDANCE WITH THE 2018 INTERNATIONAL RESIDENTIAL CODE BOOK (IRC) AND THE 2018 INTERNATIONAL BUILDING CODE (IBC).
- ALL WORK TO BE IN ACCORDANCE WITH THE 2018 INTERNATIONAL PLUMBING CODE (IPC).
- ALL WORK TO BE IN ACCORDANCE WITH THE 2018 INTERNATIONAL MECHANICAL AND ELECTRICAL CODE (IMC/IEC).
- ALL WORK TO BE IN ACCORDANCE WITH THE 2018 INTERNATIONAL FIRE AND SAFETY CODE (IFSC).
- ALL WORK TO BE IN ACCORDANCE WITH THE 2018 INTERNATIONAL ENERGY CONSERVATION CODE (IECC).
- ALL WORK TO BE IN ACCORDANCE WITH THE 2018 INTERNATIONAL SMOKE AND ALARM CODE (ISAC).
- ALL WORK TO BE IN ACCORDANCE WITH THE 2018 INTERNATIONAL ACCESSIBILITY AND MOBILITY ACT (ADA).
- ALL WORK TO BE IN ACCORDANCE WITH THE 2018 INTERNATIONAL GREEN BUILDING CONSTRUCTION CODE (IGBC).
- ALL WORK TO BE IN ACCORDANCE WITH THE 2018 INTERNATIONAL SUSTAINABLE DESIGN AND CONSTRUCTION CODE (ISDCC).
- ALL WORK TO BE IN ACCORDANCE WITH THE 2018 INTERNATIONAL WELL-BEING AND PRODUCTIVITY CODE (IWPC).
- ALL WORK TO BE IN ACCORDANCE WITH THE 2018 INTERNATIONAL CYBER SECURITY AND PRIVACY CODE (ISPC).
- ALL WORK TO BE IN ACCORDANCE WITH THE 2018 INTERNATIONAL DATA PROTECTION AND PRIVACY CODE (IDPPC).
- ALL WORK TO BE IN ACCORDANCE WITH THE 2018 INTERNATIONAL ARTIFICIAL INTELLIGENCE AND AUTOMATION CODE (IAAC).
- ALL WORK TO BE IN ACCORDANCE WITH THE 2018 INTERNATIONAL BIOTECHNOLOGY AND NANOTECHNOLOGY CODE (IBNCC).
- ALL WORK TO BE IN ACCORDANCE WITH THE 2018 INTERNATIONAL SPACE AND AEROSPACE CODE (ISACC).
- ALL WORK TO BE IN ACCORDANCE WITH THE 2018 INTERNATIONAL MARITIME AND AVIATION CODE (IMAVCC).
- ALL WORK TO BE IN ACCORDANCE WITH THE 2018 INTERNATIONAL TRANSPORTATION AND LOGISTICS CODE (ITLCC).
- ALL WORK TO BE IN ACCORDANCE WITH THE 2018 INTERNATIONAL ENERGY AND UTILITIES CODE (IEUCC).
- ALL WORK TO BE IN ACCORDANCE WITH THE 2018 INTERNATIONAL TELECOMMUNICATIONS AND INFORMATION TECHNOLOGY CODE (ITCITCC).
- ALL WORK TO BE IN ACCORDANCE WITH THE 2018 INTERNATIONAL MEDIA AND ENTERTAINMENT CODE (IMECC).
- ALL WORK TO BE IN ACCORDANCE WITH THE 2018 INTERNATIONAL HEALTHC

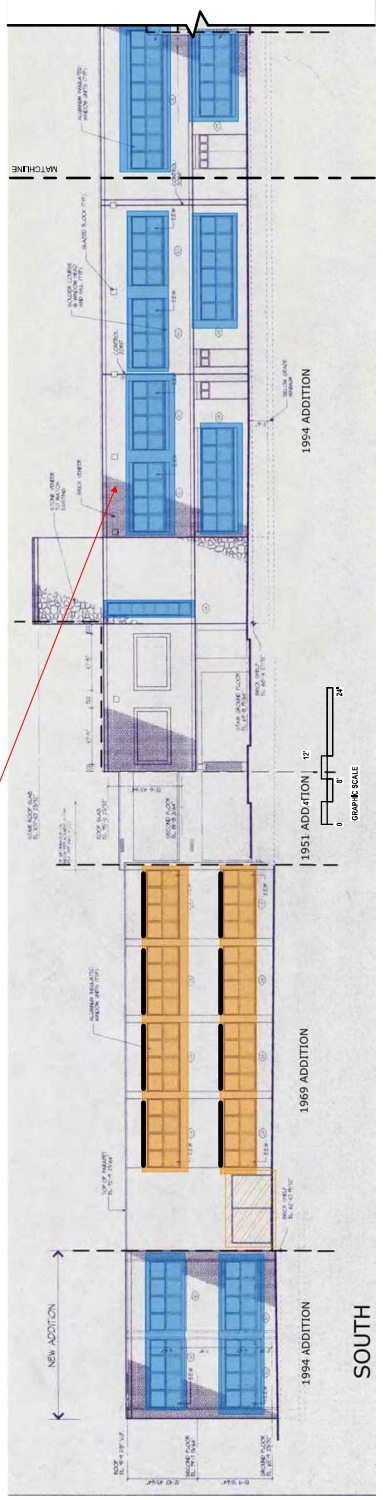
ELEVATION LEGEND

- LEGEND
NEW ADDITION
1994 ADDITION
1969 ADDITION
1951 ADDITION
ORIGINAL BUILDING

- GENERAL NOTES
1. GENERAL NOTES
2. GENERAL NOTES
3. GENERAL NOTES
4. GENERAL NOTES
5. GENERAL NOTES
6. GENERAL NOTES
7. GENERAL NOTES
8. GENERAL NOTES
9. GENERAL NOTES
10. GENERAL NOTES
11. GENERAL NOTES
12. GENERAL NOTES
13. GENERAL NOTES
14. GENERAL NOTES
15. GENERAL NOTES
16. GENERAL NOTES
17. GENERAL NOTES
18. GENERAL NOTES
19. GENERAL NOTES
20. GENERAL NOTES
21. GENERAL NOTES
22. GENERAL NOTES
23. GENERAL NOTES
24. GENERAL NOTES
25. GENERAL NOTES
26. GENERAL NOTES
27. GENERAL NOTES
28. GENERAL NOTES
29. GENERAL NOTES
30. GENERAL NOTES
31. GENERAL NOTES
32. GENERAL NOTES
33. GENERAL NOTES
34. GENERAL NOTES
35. GENERAL NOTES
36. GENERAL NOTES
37. GENERAL NOTES
38. GENERAL NOTES
39. GENERAL NOTES
40. GENERAL NOTES
41. GENERAL NOTES
42. GENERAL NOTES
43. GENERAL NOTES
44. GENERAL NOTES
45. GENERAL NOTES
46. GENERAL NOTES
47. GENERAL NOTES
48. GENERAL NOTES
49. GENERAL NOTES
50. GENERAL NOTES
51. GENERAL NOTES
52. GENERAL NOTES
53. GENERAL NOTES
54. GENERAL NOTES
55. GENERAL NOTES
56. GENERAL NOTES
57. GENERAL NOTES
58. GENERAL NOTES
59. GENERAL NOTES
60. GENERAL NOTES
61. GENERAL NOTES
62. GENERAL NOTES
63. GENERAL NOTES
64. GENERAL NOTES
65. GENERAL NOTES
66. GENERAL NOTES
67. GENERAL NOTES
68. GENERAL NOTES
69. GENERAL NOTES
70. GENERAL NOTES
71. GENERAL NOTES
72. GENERAL NOTES
73. GENERAL NOTES
74. GENERAL NOTES
75. GENERAL NOTES
76. GENERAL NOTES
77. GENERAL NOTES
78. GENERAL NOTES
79. GENERAL NOTES
80. GENERAL NOTES
81. GENERAL NOTES
82. GENERAL NOTES
83. GENERAL NOTES
84. GENERAL NOTES
85. GENERAL NOTES
86. GENERAL NOTES
87. GENERAL NOTES
88. GENERAL NOTES
89. GENERAL NOTES
90. GENERAL NOTES
91. GENERAL NOTES
92. GENERAL NOTES
93. GENERAL NOTES
94. GENERAL NOTES
95. GENERAL NOTES
96. GENERAL NOTES
97. GENERAL NOTES
98. GENERAL NOTES
99. GENERAL NOTES
100. GENERAL NOTES



ELEVATION 4 - CONT.



ELEVATION 4

Table with columns for sheet numbers and titles, including a 'Draft' watermark.



Overton Middle Schools
388 CLERMONT RD. STAMFORD, CT 06906

PROJECT TITLE
JULIA STARK ELEMENTARY SCHOOL
388 CLERMONT RD. STAMFORD, CT 06906

A-204

GRANT APPLICATION
9/30/2024

