

Town of Darien
City of Stamford

Approximate Corporate Limit

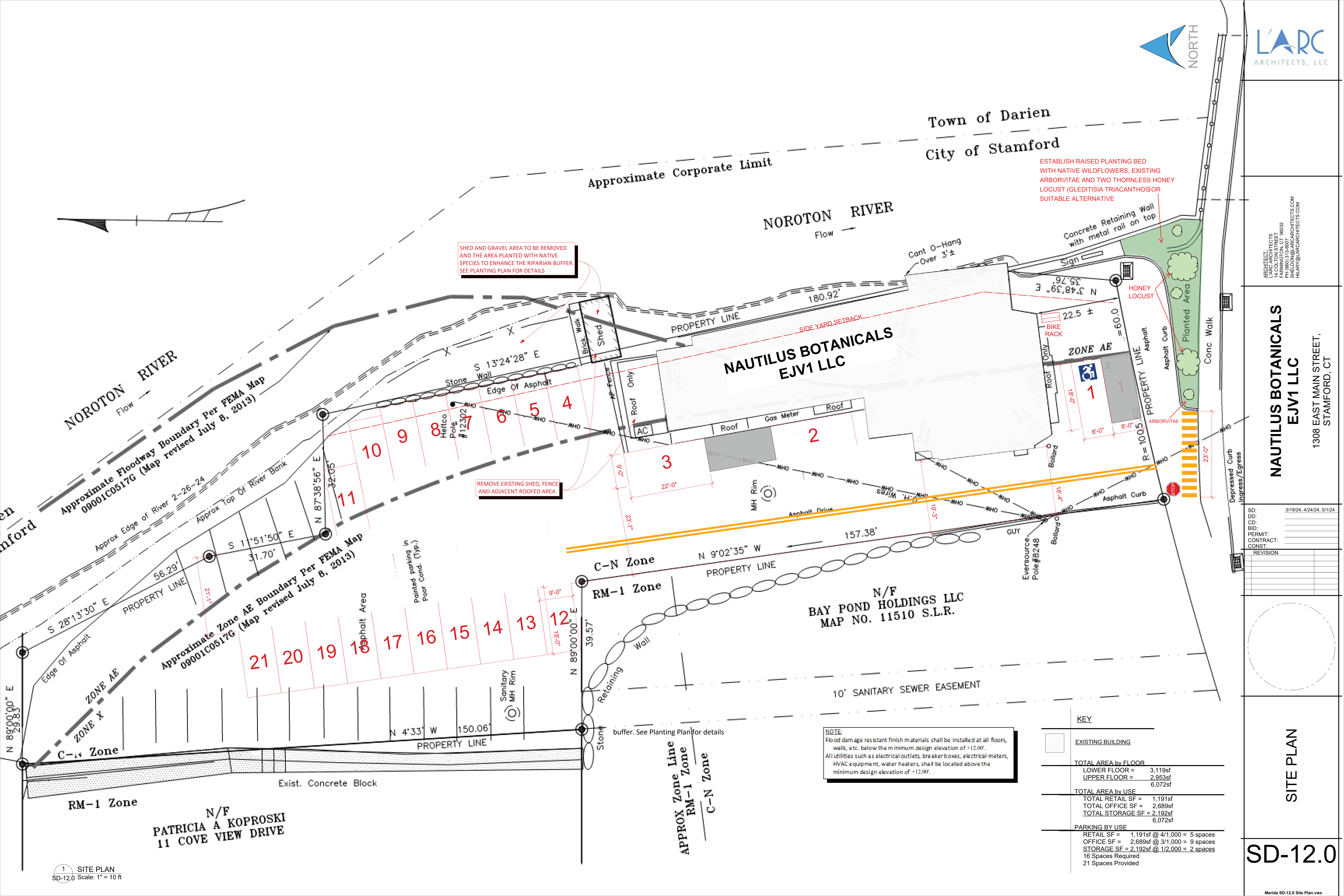
ESTABLISH RAISED PLANTING BED WITH NATIVE WILDFLOWERS, EXISTING ARBORVITAE AND TWO THORNLESS HONEY LOCUST (GLEDITISIA TRIACANTHOS) OR SUITABLE ALTERNATIVE

SHED AND GRAVEL AREA TO BE REMOVED AND THE AREA PLANTED WITH NATIVE SPECIES TO ENHANCE THE RIPARIAN BUFFER. SEE PLANTING PLAN FOR DETAILS

REMOVE EXISTING SHED, FENCE AND ADJACENT ROOFED AREA

buffer. See Planting Plan for details

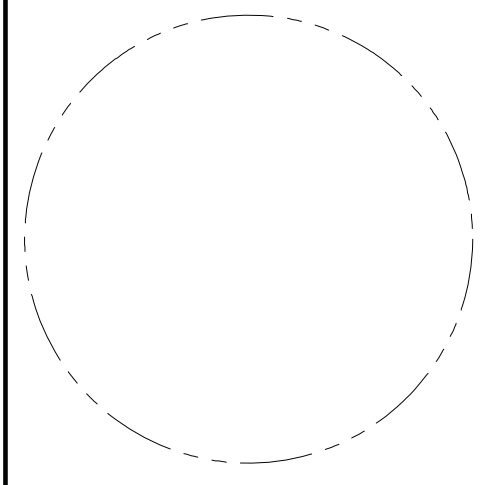
NOTE:
Flood damage resistant finish materials shall be installed at all floors, walls, etc. below the minimum design elevation of +12.00'.
All utilities such as electrical outlets, breaker boxes, electrical meters, HVAC equipment, water heaters, shall be located above the minimum design elevation of +12.00'.



ARCHITECT:
LARC ARCHITECTS
14 COLTON STREET
WILMINGTON, CT 06332
PH: 203.786.1407
SHeldon@LARCARCHITECTS.COM
HILARY@LARCARCHITECTS.COM

**NAUTILUS BOTANICALS
EJV1 LLC**
1308 EAST MAIN STREET,
STAMFORD, CT

SD: 3/19/24, 4/24/24, 5/1/24
DD:
CD:
BID:
PERMIT:
CONTRACT:
CONST:
REVISION:



SITE PLAN

SD-12.0