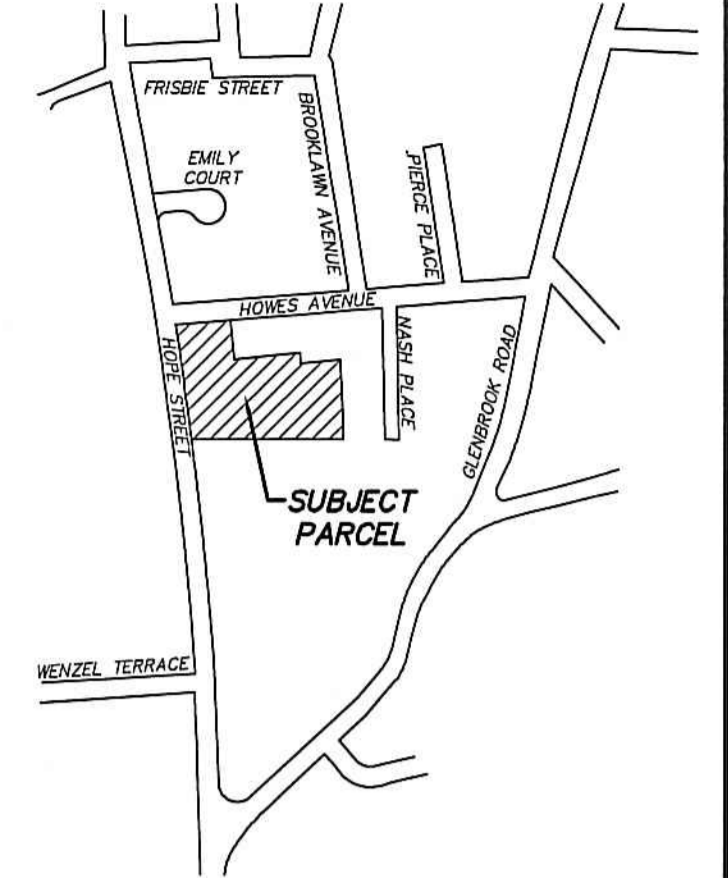


**BLOCK No. 295**  
 AREA = 2.331 ACRES  
 "R-7 1/2" ZONING DISTRICT (EXISTING)  
 "RM-1" ZONING DISTRICT (PROPOSED)

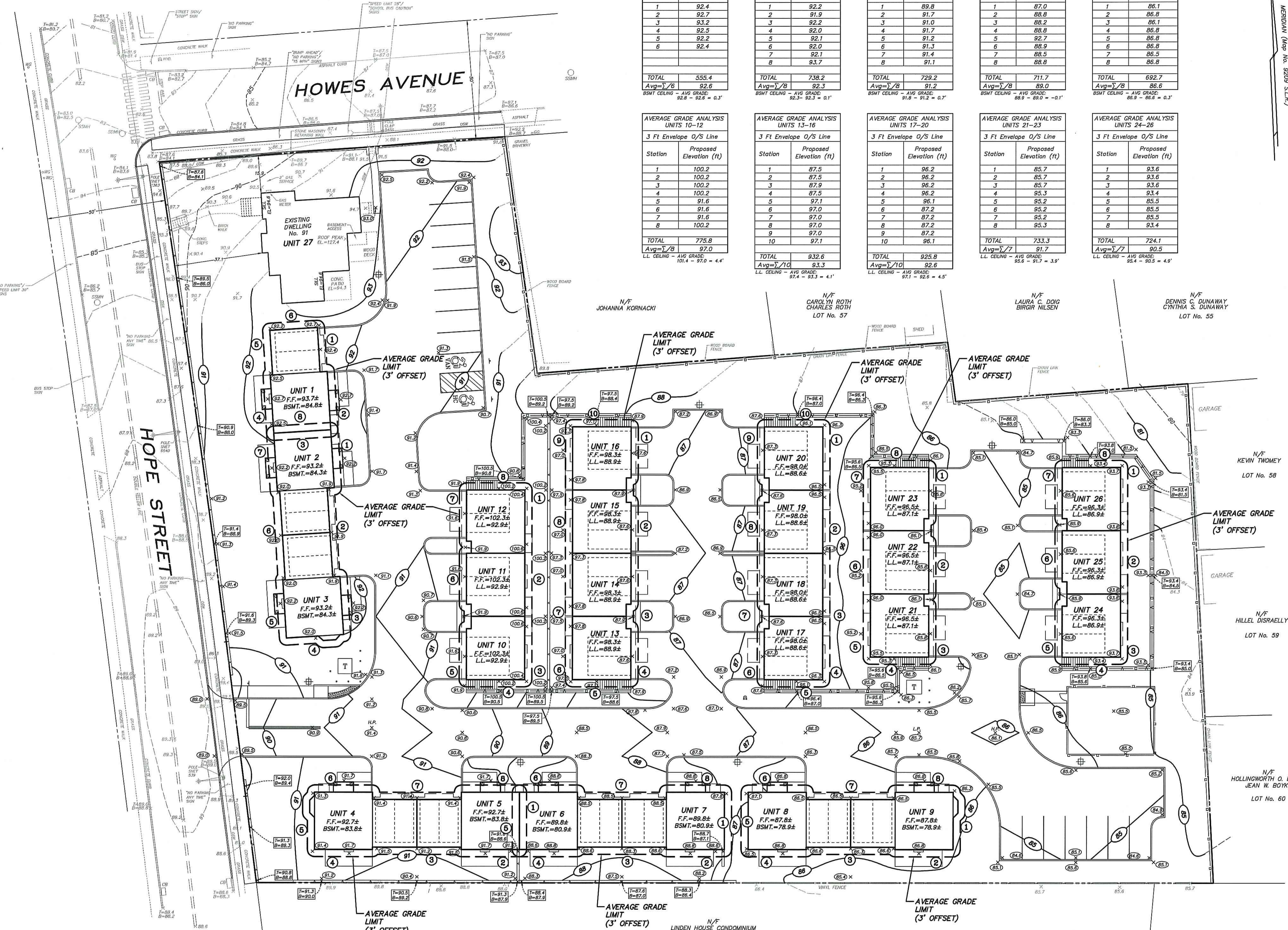


LOCATION MAP - 1"=500'

AVERAGE GRADE ANALYSIS UNIT 1		AVERAGE GRADE ANALYSIS UNITS 2-3		AVERAGE GRADE ANALYSIS UNITS 4-5		AVERAGE GRADE ANALYSIS UNITS 6-7		AVERAGE GRADE ANALYSIS UNITS 8-9	
Station	Proposed Elevation (ft)	Station	Proposed Elevation (ft)	Station	Proposed Elevation (ft)	Station	Proposed Elevation (ft)	Station	Proposed Elevation (ft)
1	92.4	1	92.2	1	89.8	1	85.0	1	86.1
2	92.7	2	91.9	2	91.7	2	88.8	2	86.8
3	93.2	3	92.2	3	91.0	3	88.2	3	86.1
4	92.5	4	92.0	4	91.7	4	88.8	4	86.8
5	92.2	5	92.1	5	91.2	5	92.7	5	86.8
6	92.4	6	92.0	6	91.3	6	88.9	6	86.9
		7	92.1	7	91.4	7	88.5	7	86.5
		8	93.7	8	91.1	8	88.8	8	86.8
TOTAL	555.4	TOTAL	738.2	TOTAL	728.2	TOTAL	711.7	TOTAL	692.7
Avg= $\sum Y/B$	92.3	Avg= $\sum Y/B$	92.3	Avg= $\sum Y/B$	91.2	Avg= $\sum Y/B$	89.0	Avg= $\sum Y/B$	86.6
BSMT CEILING - AVG GRADE:	92.8 - 92.6 = 0.2'	BSMT CEILING - AVG GRADE:	92.3 - 92.3 = 0.0'	BSMT CEILING - AVG GRADE:	91.8 - 91.2 = 0.6'	BSMT CEILING - AVG GRADE:	88.9 - 89.0 = -0.1'	BSMT CEILING - AVG GRADE:	86.9 - 86.6 = 0.3'

AVERAGE GRADE ANALYSIS UNITS 10-12		AVERAGE GRADE ANALYSIS UNITS 13-16		AVERAGE GRADE ANALYSIS UNITS 17-20		AVERAGE GRADE ANALYSIS UNITS 21-23		AVERAGE GRADE ANALYSIS UNITS 24-26	
Station	Proposed Elevation (ft)	Station	Proposed Elevation (ft)	Station	Proposed Elevation (ft)	Station	Proposed Elevation (ft)	Station	Proposed Elevation (ft)
1	100.2	1	87.5	1	96.2	1	85.7	1	93.6
2	100.2	2	87.5	2	96.2	2	85.7	2	93.6
3	100.2	3	87.9	3	96.2	3	96.2	3	93.6
4	100.2	4	87.5	4	96.2	4	95.3	4	93.4
5	91.6	5	97.1	5	96.1	5	95.2	5	95.5
6	91.6	6	97.0	6	87.2	6	95.2	6	85.5
7	91.6	7	97.0	7	87.2	7	95.2	7	85.5
8	100.2	8	97.0	8	87.2	8	95.3	8	93.4
		9	97.0						
		10	97.1						
TOTAL	775.8	TOTAL	932.6	TOTAL	925.8	TOTAL	733.3	TOTAL	724.1
Avg= $\sum Y/B$	92.0	Avg= $\sum Y/B$	93.3	Avg= $\sum Y/B$	92.6	Avg= $\sum Y/B$	91.7	Avg= $\sum Y/B$	90.5
LL CEILING - AVG GRADE:	101.4 - 92.0 = 4.4'	LL CEILING - AVG GRADE:	97.4 - 93.3 = 4.1'	LL CEILING - AVG GRADE:	92.6 - 91.7 = 0.9'	LL CEILING - AVG GRADE:	95.6 - 91.7 = 3.9'	LL CEILING - AVG GRADE:	95.4 - 90.5 = 4.9'



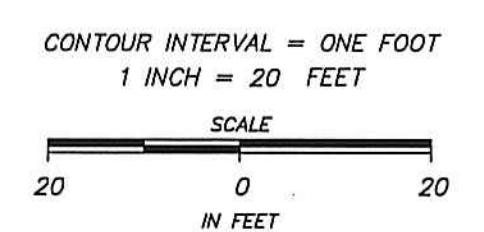
**LEGEND**

- - - - - EXISTING CONTOUR
- x 30.0 EXISTING SPOT ELEVATION
- x 30.0 EXISTING TOP/BOTTOM SPOT ELEVATION
- 30.0 PROPOSED CONTOUR
- x 30.0 PROPOSED SPOT ELEVATION
- x 30.0 PROPOSED TOP/BOTTOM SPOT ELEVATION
- — — — — PROPERTY LINE
- ⊕ PROPOSED LIGHT POLE

**D'ANDREA SURVEYING & ENGINEERING, P.C.**  
 LAND PLANNERS  
 ENGINEERS  
 SURVEYORS  
 P.O. BOX 549 RIVERSIDE, CT 06878  
 6 NEIL LANE TEL. 637-1779

PROJECT	"HOPE STREET TOWNHOUSES"
PREPARED FOR	RRIT, LLC
REVISION	DATE DESCRIPTION
0	12-12-23 ZONING SUBMISSION
1	12-12-23 DEBEK E. DAUNAS, CT PE No. 22861
2	12-12-23 DEBEK E. DAUNAS, CT PE No. 22861
3	12-12-23 DEBEK E. DAUNAS, CT PE No. 22861
4	12-12-23 DEBEK E. DAUNAS, CT PE No. 22861
5	12-12-23 DEBEK E. DAUNAS, CT PE No. 22861
6	12-12-23 DEBEK E. DAUNAS, CT PE No. 22861
7	12-12-23 DEBEK E. DAUNAS, CT PE No. 22861
8	12-12-23 DEBEK E. DAUNAS, CT PE No. 22861
9	12-12-23 DEBEK E. DAUNAS, CT PE No. 22861
10	12-12-23 DEBEK E. DAUNAS, CT PE No. 22861
11	12-12-23 DEBEK E. DAUNAS, CT PE No. 22861
12	12-12-23 DEBEK E. DAUNAS, CT PE No. 22861
13	12-12-23 DEBEK E. DAUNAS, CT PE No. 22861
14	12-12-23 DEBEK E. DAUNAS, CT PE No. 22861
15	12-12-23 DEBEK E. DAUNAS, CT PE No. 22861
16	12-12-23 DEBEK E. DAUNAS, CT PE No. 22861
17	12-12-23 DEBEK E. DAUNAS, CT PE No. 22861
18	12-12-23 DEBEK E. DAUNAS, CT PE No. 22861
19	12-12-23 DEBEK E. DAUNAS, CT PE No. 22861
20	12-12-23 DEBEK E. DAUNAS, CT PE No. 22861
21	12-12-23 DEBEK E. DAUNAS, CT PE No. 22861
22	12-12-23 DEBEK E. DAUNAS, CT PE No. 22861
23	12-12-23 DEBEK E. DAUNAS, CT PE No. 22861
24	12-12-23 DEBEK E. DAUNAS, CT PE No. 22861
25	12-12-23 DEBEK E. DAUNAS, CT PE No. 22861
26	12-12-23 DEBEK E. DAUNAS, CT PE No. 22861
27	12-12-23 DEBEK E. DAUNAS, CT PE No. 22861
28	12-12-23 DEBEK E. DAUNAS, CT PE No. 22861
29	12-12-23 DEBEK E. DAUNAS, CT PE No. 22861
30	12-12-23 DEBEK E. DAUNAS, CT PE No. 22861
31	12-12-23 DEBEK E. DAUNAS, CT PE No. 22861
32	12-12-23 DEBEK E. DAUNAS, CT PE No. 22861
33	12-12-23 DEBEK E. DAUNAS, CT PE No. 22861
34	12-12-23 DEBEK E. DAUNAS, CT PE No. 22861
35	12-12-23 DEBEK E. DAUNAS, CT PE No. 22861
36	12-12-23 DEBEK E. DAUNAS, CT PE No. 22861
37	12-12-23 DEBEK E. DAUNAS, CT PE No. 22861
38	12-12-23 DEBEK E. DAUNAS, CT PE No. 22861
39	12-12-23 DEBEK E. DAUNAS, CT PE No. 22861
40	12-12-23 DEBEK E. DAUNAS, CT PE No. 22861
41	12-12-23 DEBEK E. DAUNAS, CT PE No. 22861
42	12-12-23 DEBEK E. DAUNAS, CT PE No. 22861
43	12-12-23 DEBEK E. DAUNAS, CT PE No. 22861
44	12-12-23 DEBEK E. DAUNAS, CT PE No. 22861
45	12-12-23 DEBEK E. DAUNAS, CT PE No. 22861
46	12-12-23 DEBEK E. DAUNAS, CT PE No. 22861
47	12-12-23 DEBEK E. DAUNAS, CT PE No. 22861
48	12-12-23 DEBEK E. DAUNAS, CT PE No. 22861
49	12-12-23 DEBEK E. DAUNAS, CT PE No. 22861
50	12-12-23 DEBEK E. DAUNAS, CT PE No. 22861
51	12-12-23 DEBEK E. DAUNAS, CT PE No. 22861
52	12-12-23 DEBEK E. DAUNAS, CT PE No. 22861
53	12-12-23 DEBEK E. DAUNAS, CT PE No. 22861
54	12-12-23 DEBEK E. DAUNAS, CT PE No. 22861
55	12-12-23 DEBEK E. DAUNAS, CT PE No. 22861
56	12-12-23 DEBEK E. DAUNAS, CT PE No. 22861
57	12-12-23 DEBEK E. DAUNAS, CT PE No. 22861
58	12-12-23 DEBEK E. DAUNAS, CT PE No. 22861
59	12-12-23 DEBEK E. DAUNAS, CT PE No. 22861
60	12-12-23 DEBEK E. DAUNAS, CT PE No. 22861
61	12-12-23 DEBEK E. DAUNAS, CT PE No. 22861
62	12-12-23 DEBEK E. DAUNAS, CT PE No. 22861
63	12-12-23 DEBEK E. DAUNAS, CT PE No. 22861
64	12-12-23 DEBEK E. DAUNAS, CT PE No. 22861
65	12-12-23 DEBEK E. DAUNAS, CT PE No. 22861
66	12-12-23 DEBEK E. DAUNAS, CT PE No. 22861
67	12-12-23 DEBEK E. DAUNAS, CT PE No. 22861
68	12-12-23 DEBEK E. DAUNAS, CT PE No. 22861
69	12-12-23 DEBEK E. DAUNAS, CT PE No. 22861
70	12-12-23 DEBEK E. DAUNAS, CT PE No. 22861
71	12-12-23 DEBEK E. DAUNAS, CT PE No. 22861
72	12-12-23 DEBEK E. DAUNAS, CT PE No. 22861
73	12-12-23 DEBEK E. DAUNAS, CT PE No. 22861
74	12-12-23 DEBEK E. DAUNAS, CT PE No. 22861
75	12-12-23 DEBEK E. DAUNAS, CT PE No. 22861
76	12-12-23 DEBEK E. DAUNAS, CT PE No. 22861
77	12-12-23 DEBEK E. DAUNAS, CT PE No. 22861
78	12-12-23 DEBEK E. DAUNAS, CT PE No. 22861
79	12-12-23 DEBEK E. DAUNAS, CT PE No. 22861
80	12-12-23 DEBEK E. DAUNAS, CT PE No. 22861
81	12-12-23 DEBEK E. DAUNAS, CT PE No. 22861
82	12-12-23 DEBEK E. DAUNAS, CT PE No. 22861
83	12-12-23 DEBEK E. DAUNAS, CT PE No. 22861
84	12-12-23 DEBEK E. DAUNAS, CT PE No. 22861
85	12-12-23 DEBEK E. DAUNAS, CT PE No. 22861
86	12-12-23 DEBEK E. DAUNAS, CT PE No. 22861
87	12-12-23 DEBEK E. DAUNAS, CT PE No. 22861
88	12-12-23 DEBEK E. DAUNAS, CT PE No. 22861
89	12-12-23 DEBEK E. DAUNAS, CT PE No. 22861
90	12-12-23 DEBEK E. DAUNAS, CT PE No. 22861
91	12-12-23 DEBEK E. DAUNAS, CT PE No. 22861
92	12-12-23 DEBEK E. DAUNAS, CT PE No. 22861
93	12-12-23 DEBEK E. DAUNAS, CT PE No. 22861
94	12-12-23 DEBEK E. DAUNAS, CT PE No. 22861
95	12-12-23 DEBEK E. DAUNAS, CT PE No. 22861
96	12-12-23 DEBEK E. DAUNAS, CT PE No. 22861
97	12-12-23 DEBEK E. DAUNAS, CT PE No. 22861
98	12-12-23 DEBEK E. DAUNAS, CT PE No. 22861
99	12-12-23 DEBEK E. DAUNAS, CT PE No. 22861
100	12-12-23 DEBEK E. DAUNAS, CT PE No. 22861

**NOTES:**  
 1. The purpose of this plan is only for the calculation of the average grade for the proposed buildings. It shall not be used for any other aspect of construction.  
 2. Proposed grades were taken from the Site Grading and Layout Plan, Sheet 2 of 8 of the Civil plan set.  
 3. Elevations shown are based on the North American Vertical Datum of 1988 (NAVD 88).



ONLY COPIES OF THIS MAP, BEARING AN ORIGINAL IMPRINT OF THE ENGINEER'S EMBOSSED SEAL SHALL BE CONSIDERED TO BE TRUE, VALID COPIES.