

GENERAL NOTES:

- EXACT LOCATION OF PROPOSED PLANTINGS AND SPECIES TYPES MAY VARY FROM THIS PLAN BASED ON SITE PLAN REVISIONS AND/OR ACTUAL FIELD CONDITIONS.
- PLANT SPECIES SUBSTITUTIONS MAY BE MADE WITH THE APPROVAL OF THE PROJECT LANDSCAPE ARCHITECT PRIOR TO PLANTING.
- PLANTING METHODS SHALL BE IN ACCORDANCE WITH THE "AMERICAN STANDARDS FOR NURSERY STOCK", LATEST EDITION, AS PUBLISHED BY THE AMERICAN NURSERY & LANDSCAPE ASSOCIATION.
- SPRAY NEW PLANTINGS IMMEDIATELY AFTER INSTALLATION WITH A WHITE-TAILED DEER REPELLENT AND CONTINUE AS NEEDED TO MAINTAIN PLANTS FREE OF SIGNIFICANT DEER BROWSING. PROTECT TRUNKS OF NEWLY PLANTED TREES FROM DEER RUBBING AS NEEDED TO MAINTAIN HEALTHY TREES.
- SEED LAWN AREAS WITH A HIGH QUALITY FESCUE AND BLUEGRASS SEED MIXTURE. APPLY SOIL AMENDMENTS AND SEED AREAS AT THE METHODS AND RATE RECOMMENDED BY THE MANUFACTURER.

STREET TREE CHART

(FOR STREET TREES ON CITY LAND OR WITHIN 10' OF STREETScape PROPERTY LINE)

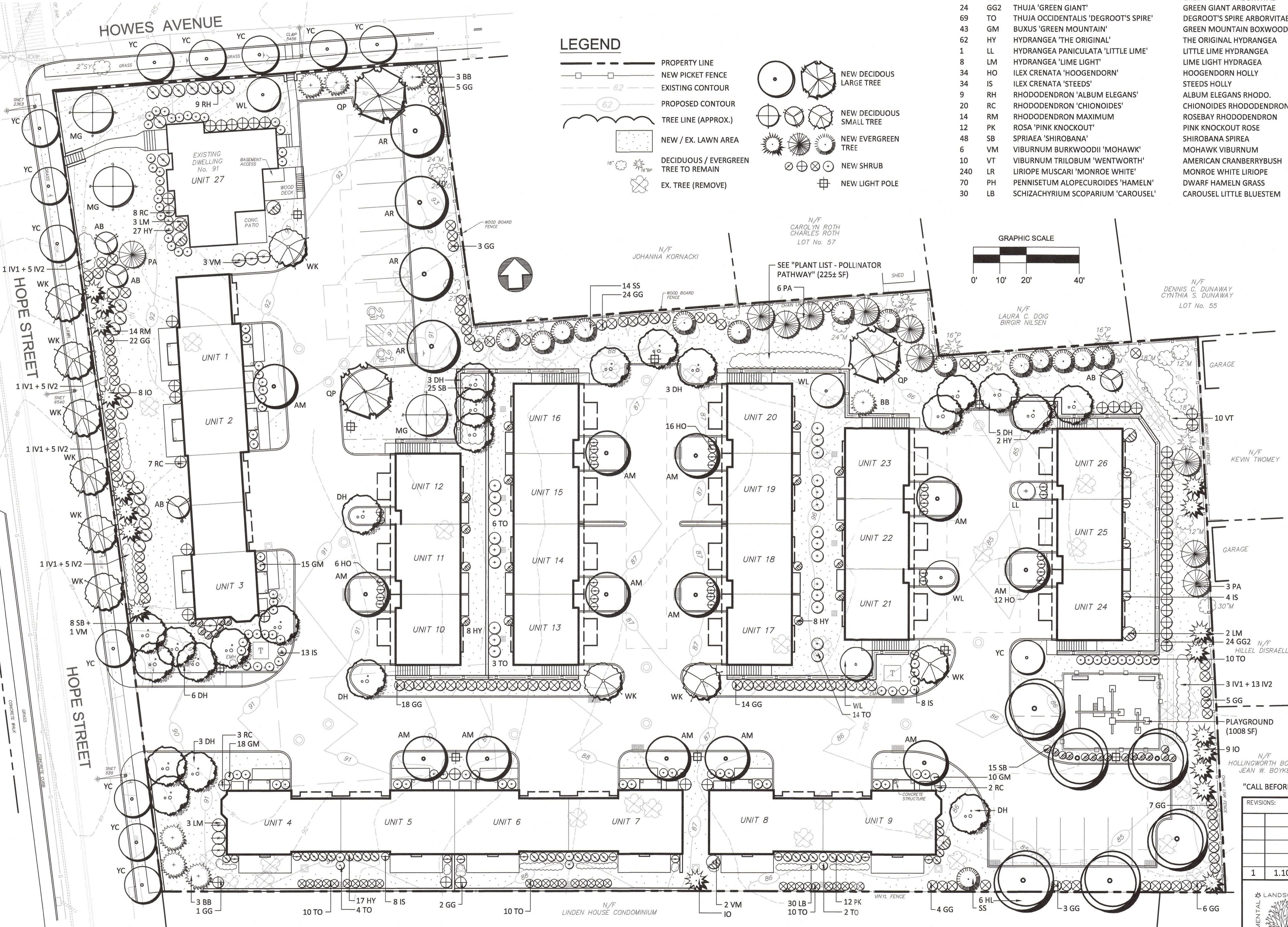
STREETScape ROAD AREA	TOTAL STREET FRONTAGE (LF)	REQUIRED STREET TREES (FRONTAGE/25)	STREET TREES EXISTING	STREET TREES PROPOSED	TREES SUBJECT TO FEE PAYMENT (STREET TREES REQUIRED - STREET TREES EXISTING - STREET TREES PROPOSED)	FEE IN LIEU REQUIRED (\$2500 PER TREE SUBJECT TO FEE PAYMENT)
HOPE STREET	304'±	13	0	13	0 (13 - 0 - 13 = 0)	\$0
HOWES AVENUE	145'±	6	1	5	0 (6 - 1 - 5 = 0)	\$0
SUBTOTAL:						\$0

PLANT LIST

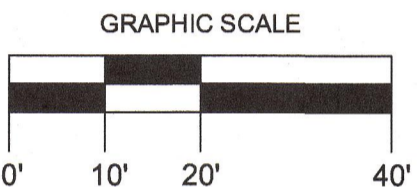
QTY	KEY	BOTANICAL NAME	COMMON NAME	SIZE	ROOT	STREET TREE	TREE SIZE	REMARKS	PLANTING HEIGHT	MATURE HEIGHT
4	AR	ACER RUBRUM	RED MAPLE	3-3 1/2" CAL.	B&B	0	LARGE	NATIVE, RED FALL COLOR	14-15' HT.	50-60' HT.
13	AM	ACER RUBRUM 'ARMSTRONG'	ARMSTRONG MAPLE	2 1/2-3" CAL.	B&B	0	MEDIUM	COLUMNAR	13-14' HT.	45-50' HT.
20	DH	BETULA NIGRA 'DURA HEAT'	DURA HEAT BIRCH	8-10" HT.	B&B	0	SMALL	EXFOLIATING BARK, MULTISTEM	8-10' HT.	30-35' HT.
6	HL	GLEDITSIA TRIACANTHOS 'SHADEMASTER'	SHADEMASTER HONEY LOCUST	2 1/2-3" CAL.	B&B	0	LARGE	NATIVE, SHADE	13-14' HT.	45-50' HT.
3	QP	QUERCUS PALUSTRIS	PIN OAK	3-3 1/2" CAL.	B&B	0	LARGE	NATIVE, SHADE, WILDLIFE	14-15' HT.	60-70' HT.
3	AB	AMELANCHIER 'AUTUMN BRILLIANCE'	AUTUMN BRILLIANCE SHAD	5-6" HT.	B&B	0	SMALL	MULTISTEM, WILDLIFE	5-6' HT.	15-20' HT.
10	WK	CRATAEGUS 'WINTER KING'	WINTER KING HAWTHORN	2-2 1/2" CAL.	B&B	6	SMALL	NATIVE, RED BERRIES	12-13' HT.	20-25' HT.
3	MG	MAGNOLIA SOULANGIANA 'BROZZONI'	BROZZONI SAUCER MAGNOLIA	7-8" HT.	B&B	0	MEDIUM	PINK FLOWERS	7-8' HT.	20-25' HT.
4	WL	MAGNOLIA STELLATA 'WATERLILY'	WATERLILY STAR MAGNOLIA	6-7" HT.	B&B	0	SMALL	PINK, FRAGRANT	6-7' HT.	12-15' HT.
13	YC	PRUNUS X YEDOENSIS	YOSHINO CHERRY	2-2 1/2" CAL.	B&B	12	SMALL	LIGHT PINK FLOWERS	9-10' HT.	15-20' HT.
18	IO	ILEX OPACA	AMERICAN HOLLY	5-6" HT.	B&B	0	MEDIUM	NATIVE, EVERGREEN, BERRIES	5-6' HT.	25-30' HT.
7	BB	MAGNOLIA GRANDIFLORA 'BRACKEN'S BEAUTY'	BRACKEN'S BEAUTY MAGNOLIA	6-7" HT.	B&B	0	SMALL	EVERGREEN TREE	6-7' HT.	20-25' HT.
10	PA	PICEA ABIES	NORWAY SPRUCE	8-9" HT.	B&B	0	LARGE	EVERGREEN TREE	9-10' HT.	60-70' HT.
16	SS	PICEA OMORIKA	SERBIAN SPRUCE	7-8" HT.	B&B	0	MEDIUM	EVERGREEN	7-8' HT.	50-60' HT.
98	GG	THUJA 'GREEN GIANT'	GREEN GIANT ARBORVITAE	6-7" HT.	B&B	0	MEDIUM	EVERGREEN, FAST GROWTH	6-7' HT.	30-35' HT.
24	GG2	THUJA 'GREEN GIANT'	GREEN GIANT ARBORVITAE	8-9" HT.	B&B	0	MEDIUM	EVERGREEN, FAST GROWTH	8-9' HT.	30-35' HT.
69	TO	THUJA OCCIDENTALIS 'DEGROOT'S SPIRE'	DEGROOT'S SPIRE ARBORVITAE	6-7" HT.	B&B	0	MEDIUM	EVERGREEN, NARROW	6-7' HT.	18-22' HT.
43	GM	BUXUS 'GREEN MOUNTAIN'	GREEN MOUNTAIN BOXWOOD	2-3" HT.	CONT.	N/A	EVERGREEN		2-3" HT.	3-4" HT.
62	HY	HYDRANGEA 'THE ORIGINAL'	THE ORIGINAL HYDRANGEA	2-3" HT.	CONT.	N/A	BLUE FLOWER		2.5" HT.	4" HT.
1	LL	HYDRANGEA PANICULATA 'LITTLE LIME'	LITTLE LIME HYDRANGEA	2-3" HT.	CONT.	N/A	WHITE FLOWER		2-3" HT.	4" HT.
8	LM	HYDRANGEA 'LIME LIGHT'	LIME LIGHT HYDRANGEA	3-4" HT.	CONT.	N/A	WHITE FLOWER		3" HT.	4" HT.
34	HO	ILEX CRENATA 'HOOGENDORN'	HOOGENDORN HOLLY	2-3" HT.	CONT.	N/A	EVERGREEN		2" HT.	3" HT.
34	IS	ILEX CRENATA 'STEEDS'	STEEDS HOLLY	3-4" HT.	CONT.	N/A	EVERGREEN		3-4" HT.	6-8" HT.
9	RH	RHODODENDRON 'ALBUM ELEGANS'	ALBUM ELEGANS RHODO.	3-4" HT.	B&B	N/A	EVERGREEN		3-4" HT.	5' HT.
20	RC	RHODODENDRON 'CHIONIODES'	CHIONIODES RHODODENDRON	3-4" HT.	B&B	N/A	EVERGREEN, WHITE FLOWER		3" HT.	5' HT.
14	RM	RHODODENDRON MAXIMUM	ROSEYARD RHODODENDRON	3-4" HT.	B&B	N/A	EVERGREEN, NATIVE		3-4" HT.	8' HT.
12	PK	ROSA 'PINK KNOCKOUT'	PINK KNOCKOUT ROSE	2-3" HT'	CONT.	N/A	PINK FLOWERS		2" HT.	4" HT.
48	SB	SPIRAEA 'SHIROBANA'	SHIROBANA SPIREA	18-24" HT.	CONT.	N/A	WHITE AND PINK FLOWERS		18" HT.	3' HT.
6	VM	VIBURNUM BURKWOODII 'MOHAWK'	MOHAWK VIBURNUM	3-4" HT.	B&B	N/A	FRAGRANT		3' HT.	8' HT.
10	VT	VIBURNUM TRILOBUM 'WENTWORTH'	AMERICAN CRANBERRYBUSH	3-4" HT.	B&B	N/A	NATIVE		3-4" HT.	6-7' HT.
240	LR	LIRIOPE MISCARI 'MONROE WHITE'	MONROE WHITE LIRIOPE	1 GAL.	N/A	N/A	FRONT BED (10 PER UNIT)		8-12" HT.	15-18" HT.
70	PH	PENNISETUM ALOPECUROIDES 'HAMELN'	DWARF HAMELN GRASS	1 GAL.	N/A	N/A	ORNAMENTAL GRASS		12-15" HT.	18-24" HT.
30	LB	SCHIZACHYRIUM SCOPARIUM 'CAROUSEL'	CAROUSEL LITTLE BLUESTEM	1 GAL.	N/A	N/A	NATIVE ORNAMENTAL GRASS		15-18" HT.	3' HT.

LEGEND

- PROPERTY LINE
- - - NEW PICKET FENCE
- EXISTING CONTOUR
- - - PROPOSED CONTOUR
- TREE LINE (APPROX.)
- NEW / EX. LAWN AREA
- DECIDUOUS / EVERGREEN TREE TO REMAIN
- ⊗ EX. TREE (REMOVE)
- NEW DECIDUOUS LARGE TREE
- NEW DECIDUOUS SMALL TREE
- NEW EVERGREEN TREE
- NEW SHRUB
- ⊕ NEW LIGHT POLE



PLAN
SCALE: 1" = 20'



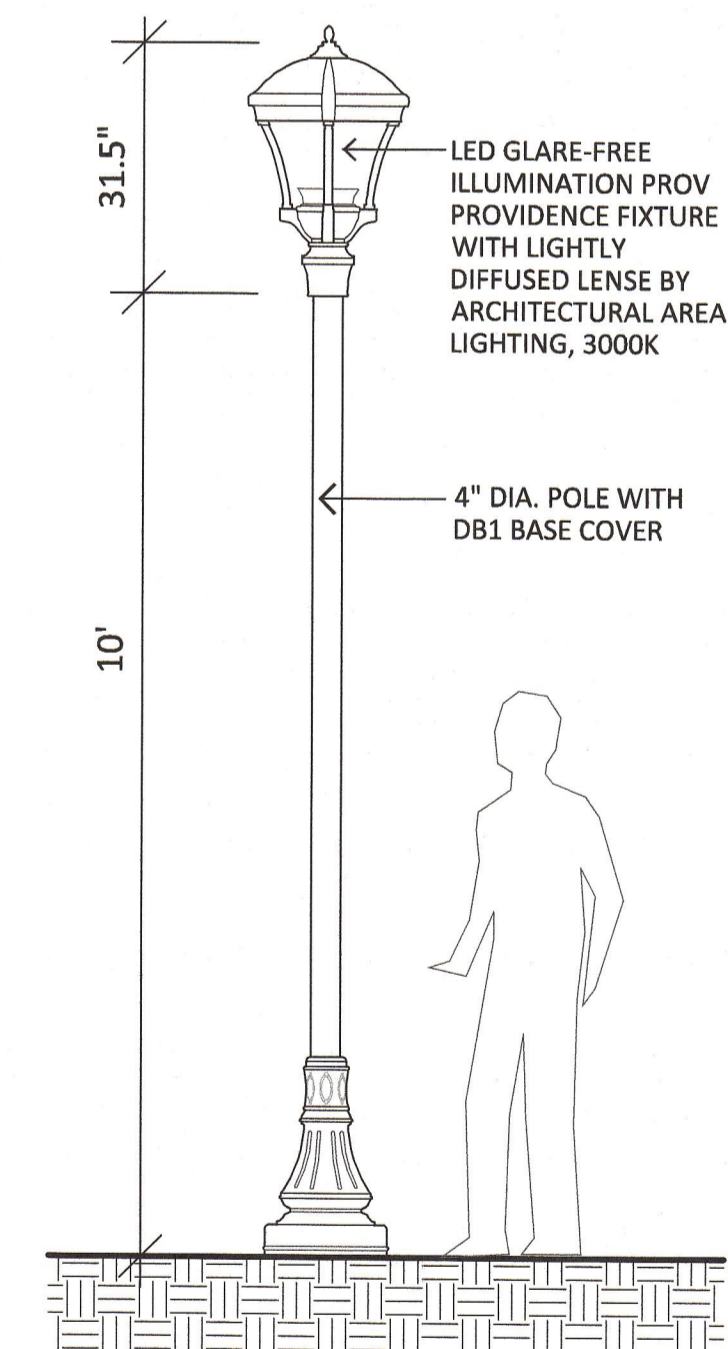
PLANT LIST - POLLINATOR PATHWAY

QTY	BOTANICAL NAME	COMMON NAME	SIZE
25	ASCLEPIAS TUBEROSA	BUTTERFLYWEED	1 GAL.
25	ECHINACEA PURPUREA	PURPLE CONEFLOWER	1 GAL.
50	MONARDA 'MARSHALL'S DELIGHT'	MONARDA	1 GAL.
25	PHYRANTHEMUM MUTICUM	MOUNTAIN MINT	1 GAL.
50	RUDEBECKIA HIRTA	BLACK-EYE SUSAN	1 GAL.

NOTE: LANDSCAPE ARCHITECT SHALL FIELD LOCATE PLANTING LOCATIONS IN THE FIELD.

GENERAL LIGHTING NOTES (TYP.):

- SITE LIGHTING INFORMATION ON PLAN WAS PREPARED BY OTHERS AND IS SHOWN ONLY FOR GENERAL REFERENCE PURPOSES.
- SITE LIGHTING INFORMATION AND LIGHTING PLANS PREPARED BY ENVIRONMENTAL LAND SOLUTIONS, LLC ARE DESIGNED FOR GENERAL LANDSCAPE AESTHETIC PURPOSES ONLY. LIGHTING INFORMATION SHOWN ON THIS PLAN SHALL NOT BE USED FOR SECURITY OR SAFETY PURPOSES.
- LOCATION AND TYPE OF LIGHT FIXTURES ARE TYPICAL AND MAY VARY BASED ON ACTUAL FIELD CONDITIONS, SITE AND ARCHITECTURAL PLAN REVISIONS. USE OF EXISTING LIGHTING (IF ANY), NEW BUILDING MOUNTED LIGHTING, AESTHETICS, AND CONSULTATIONS WITH LIGHTING CONSULTANT AND/OR MANUFACTURER.
- THIS PLAN ASSUMES THAT THE BUILDING WILL HAVE WALL MOUNTED FIXTURES (BY OTHERS) TO LIGHT THE FACADE AND ADJACENT LANDSCAPE AREAS (INCLUDING WALKS AND DOORS).



LIGHT POLE (TYP.)

SCALE: NOT TO SCALE

"CALL BEFORE YOU DIG"

REVISIONS:	DRAWING TITLE:
	LANDSCAPE PLAN
	PROJECT:
	HOPE STREET TOWNHOUSES
	91 HOPE STREET
	STAMFORD, CONNECTICUT
	DATE:
	12.9.23
	SCALE:
	AS SHOWN
	DRAWING NO.:
	LP.1

ENVIRONMENTAL LAND SOLUTIONS, LLC
Landscape Architecture and Environmental Planning

8 KNIGHT STREET, SUITE 203
NORWALK, CONNECTICUT 06851

Tel: (203) 855-7879 Fax: (203) 855-7836
info@elsllc.net www.elsllc.net