

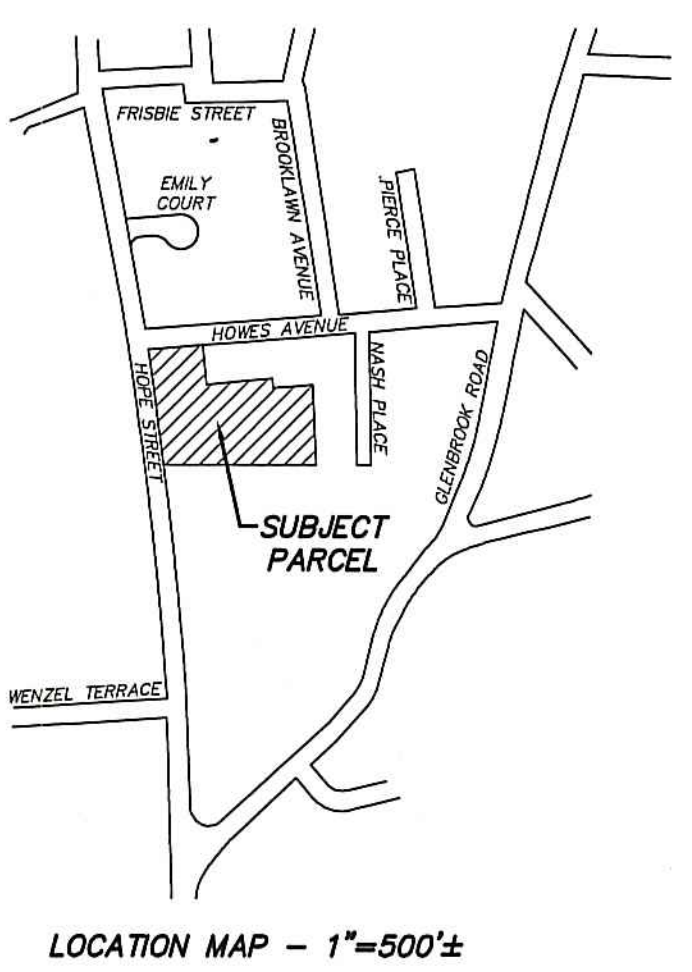
**PARKING LEGEND**

[Symbol]	GARAGE SPACE (52)
[Symbol]	TANDEM SPACE (26)
[Symbol]	UNCOVERED SPACE (15)
[Symbol]	HANDICAPPED SPACE (2)

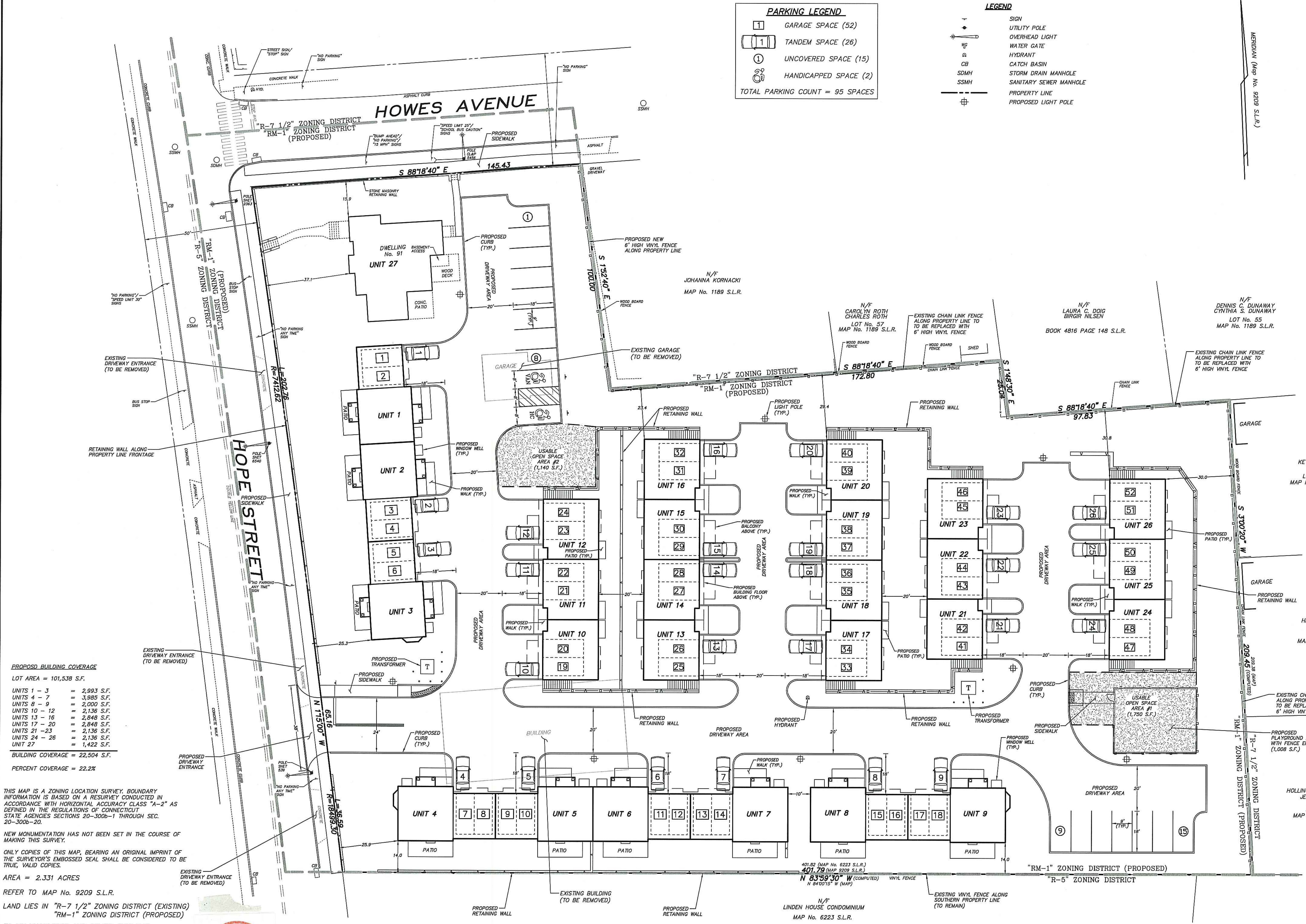
TOTAL PARKING COUNT = 95 SPACES

**LEGEND**

[Symbol]	SIGN
[Symbol]	UTILITY POLE
[Symbol]	OVERHEAD LIGHT
[Symbol]	WATER GATE
[Symbol]	HYDRANT
[Symbol]	CB
[Symbol]	SDMH
[Symbol]	SSMH
[Symbol]	PROPERTY LINE
[Symbol]	PROPOSED LIGHT POLE



LOCATION MAP - 1"=500'



**PROPOSED BUILDING COVERAGE**

LOT AREA = 101,538 S.F.

UNITS 1 - 3	= 2,993 S.F.
UNITS 4 - 7	= 3,965 S.F.
UNITS 8 - 9	= 2,000 S.F.
UNITS 10 - 12	= 2,136 S.F.
UNITS 13 - 16	= 2,848 S.F.
UNITS 17 - 20	= 2,848 S.F.
UNITS 21 - 23	= 2,136 S.F.
UNITS 24 - 26	= 2,136 S.F.
UNIT 27	= 1,422 S.F.

BUILDING COVERAGE = 22,504 S.F.  
PERCENT COVERAGE = 22.2%

THIS MAP IS A ZONING LOCATION SURVEY. BOUNDARY INFORMATION IS BASED ON A RESURVEY CONDUCTED IN ACCORDANCE WITH HORIZONTAL ACCURACY CLASS "A-2" AS DEFINED IN THE REGULATIONS OF CONNECTICUT STATE AGENCIES SECTIONS 20-300b-1 THROUGH SEC. 20-300b-20.

NEW MONUMENTATION HAS NOT BEEN SET IN THE COURSE OF MAKING THIS SURVEY.

ONLY COPIES OF THIS MAP, BEARING AN ORIGINAL IMPRINT OF THE SURVEYOR'S EMBOSSED SEAL SHALL BE CONSIDERED TO BE TRUE, VALID COPIES.

AREA = 2.331 ACRES

REFER TO MAP No. 9209 S.L.R.

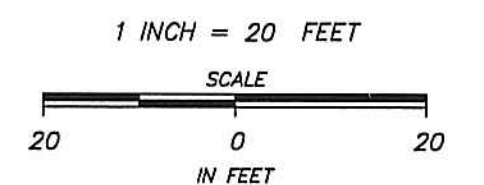
LAND LIES IN "R-7 1/2" ZONING DISTRICT (EXISTING)  
"RM-1" ZONING DISTRICT (PROPOSED)

TO MY KNOWLEDGE AND BELIEF, THIS MAP IS SUBSTANTIALLY CORRECT AS NOTED.

D'ANDREA SURVEYING & ENGINEERING, P.C.



Edwin W. Rhodes, SURVEYOR  
EDWIN W. RHODES, III CT LS No. 70436  
RIVERSIDE, CONNECTICUT DECEMBER 12, 2023



**ZONING LOCATION SURVEY**  
OF PROPERTY AT  
91 HOPE STREET  
IN  
STAMFORD, CONNECTICUT  
PREPARED FOR  
RRIT, LLC