

City of Stamford: COVID19 Update

December 15, 2020



State of the City: COVID19 Agenda

- COVID-19 Case Data Update
- COVID Alert CT Mobile App
- Vaccine Update
- Vaccine Distribution Update
- Testing Sites and Information
- Conclusion

Mayor David Martin

Lora Rae Anderson, CT Office of COO

Dr. Michael Parry

Dr. Jennifer Calder

Special Asst. Laura Burwick

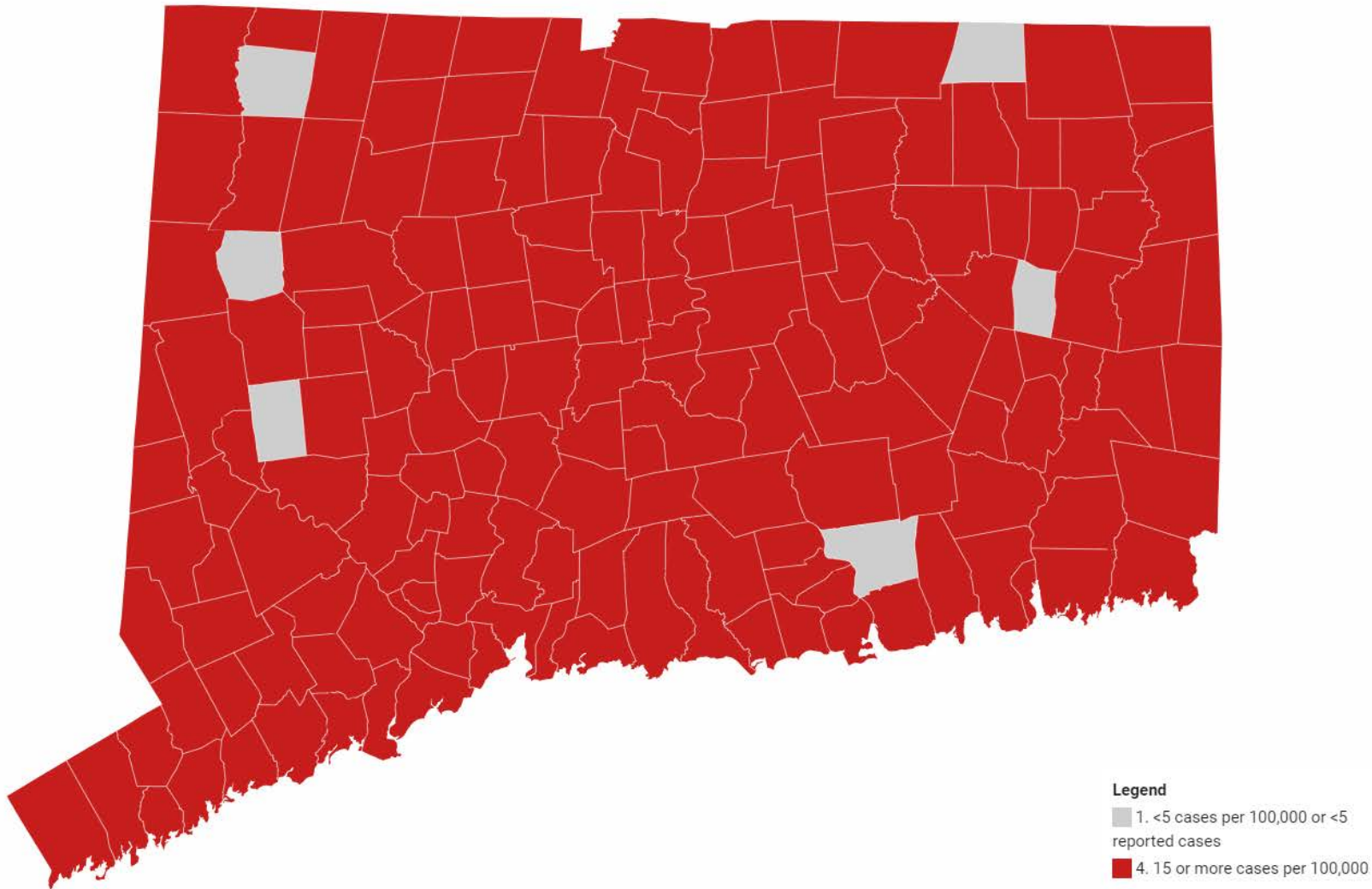
Mayor David Martin



State of the State: COVID19



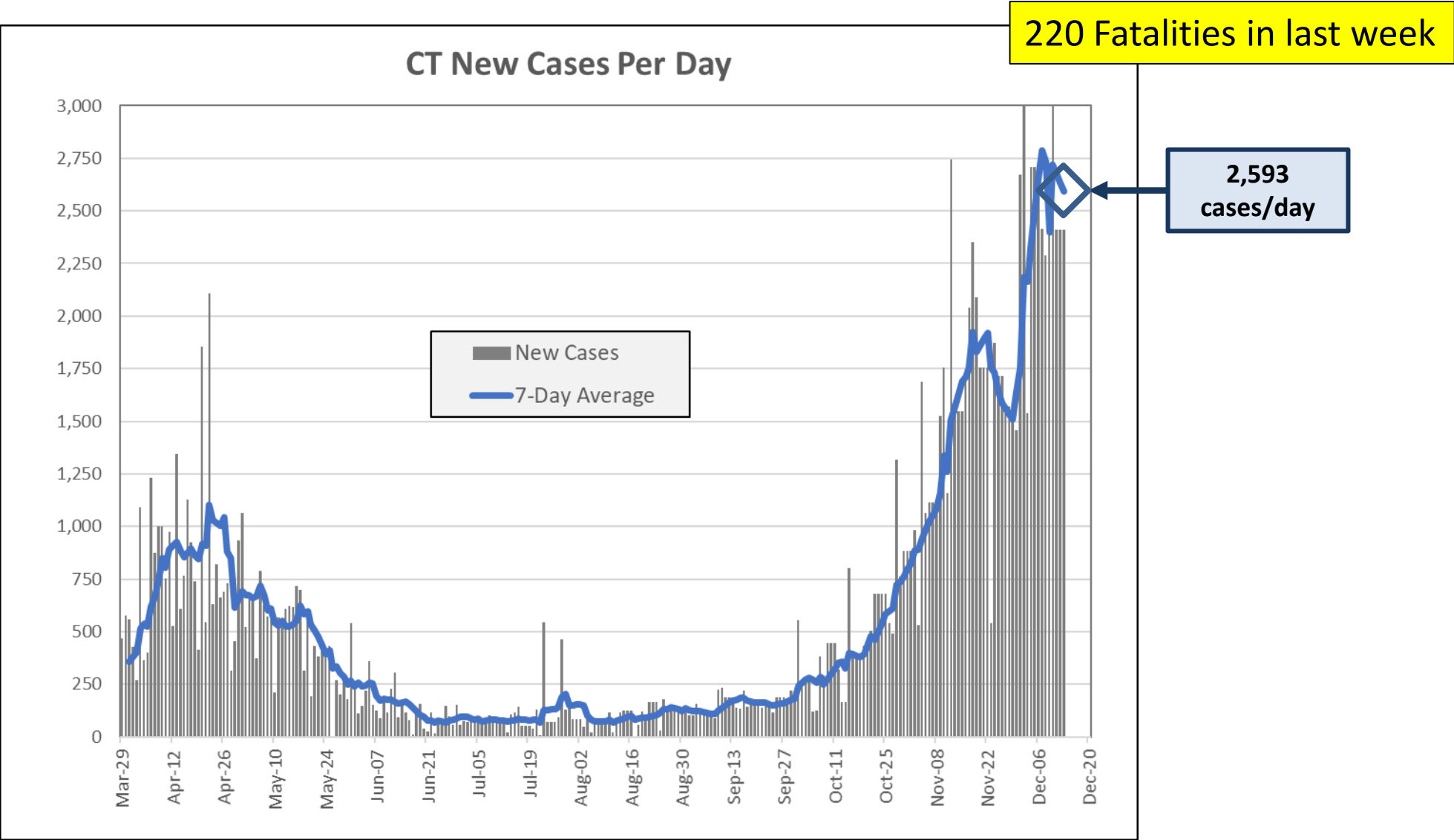
Average Daily Rate of COVID-19 Cases Among Persons Living in Community Settings per 100,000 Population By Town



This map shows the average daily rate of new cases of COVID-19 by town during the past two weeks. Only cases among persons living in community settings are included in this map; the map does not include cases among people who reside in nursing home, assisted living, or correctional facilities.

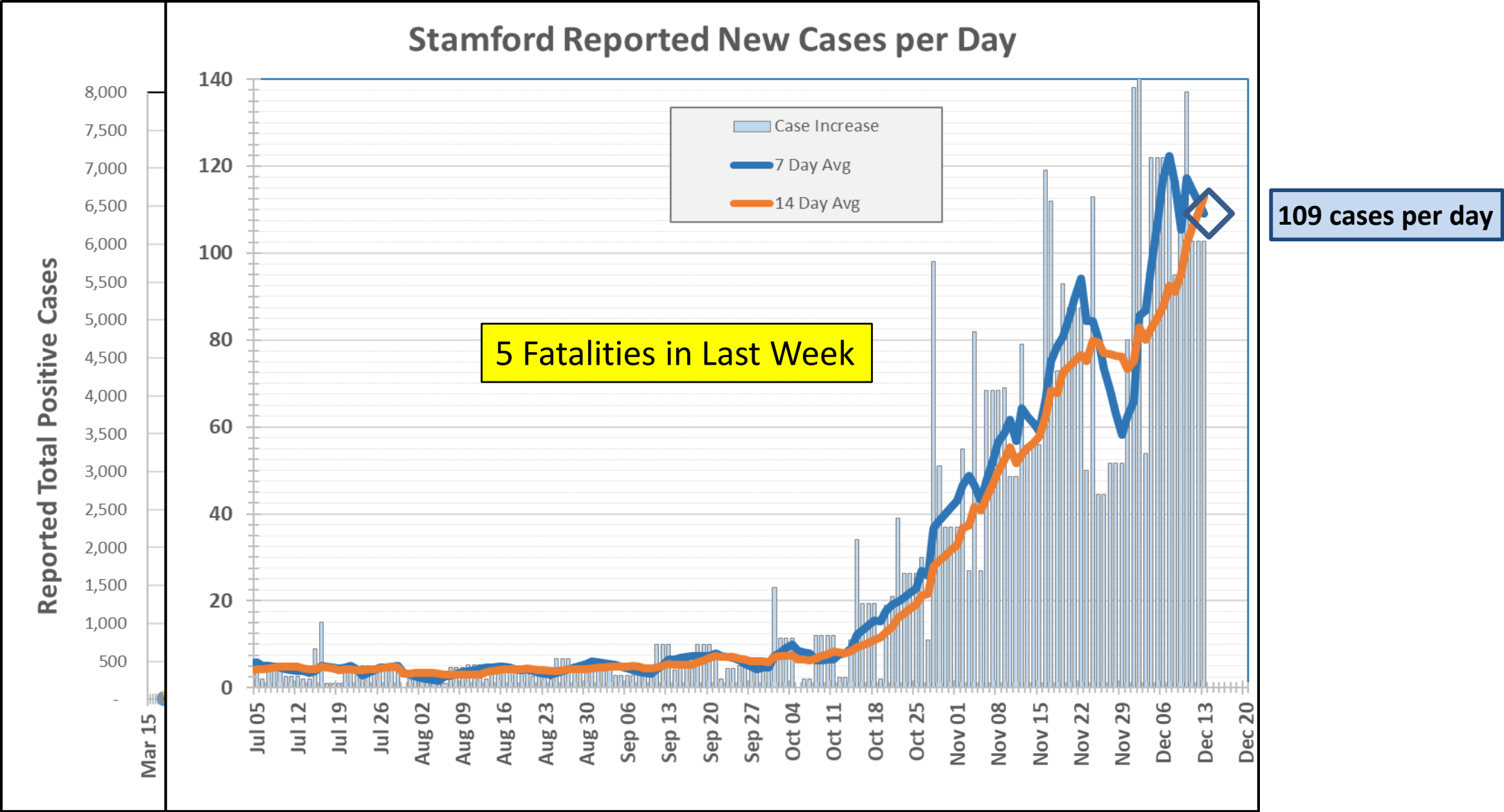
Map: Ver 12.1.2020 • Source: [CT Department of Public Health](#) • [Get the data](#) • Created with [Datawrapper](#)

State of the State: COVID19



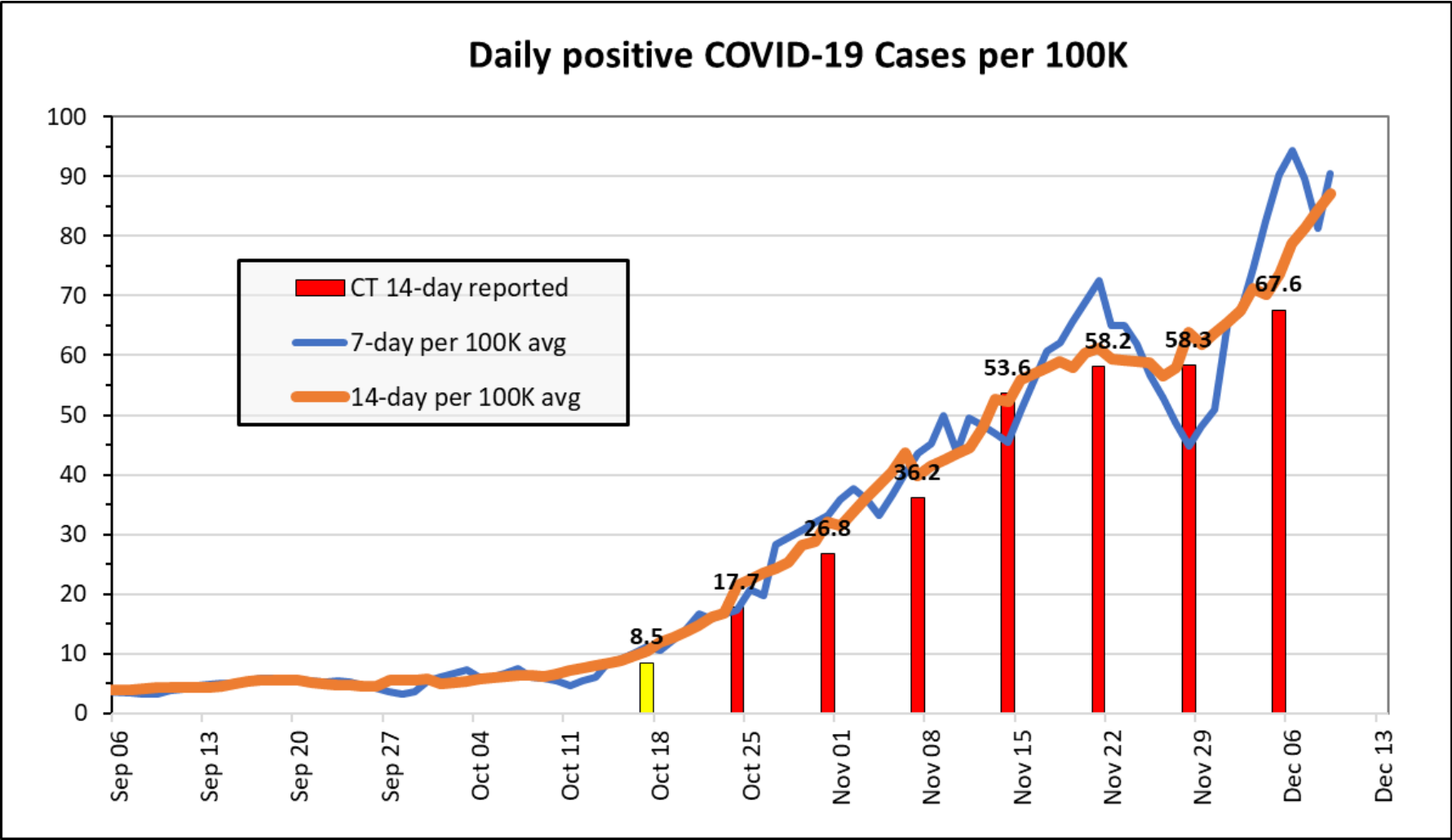
State of the City: COVID19

Case Trends



State of the City: COVID19

Case Trends



Source: CT.GOV, downloaded 12/14

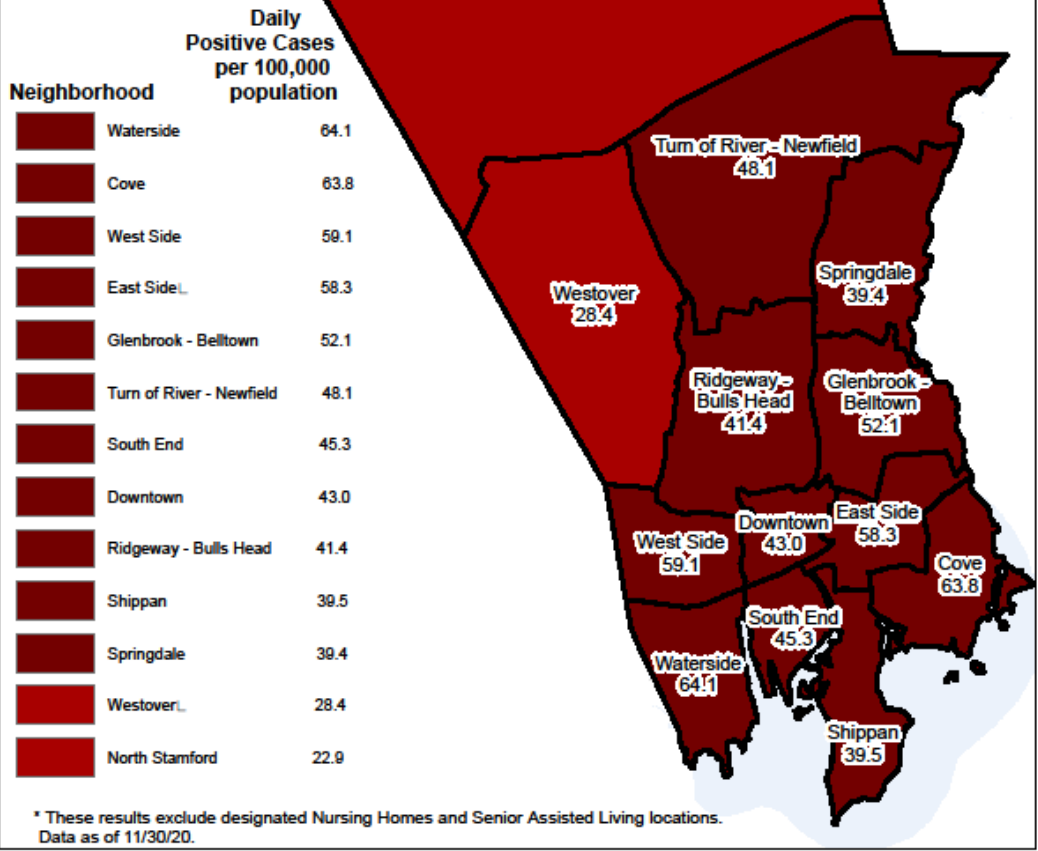
State of the City: COVID19

Neighborhood Case Levels



Every Stamford
Neighborhood is “Red”
with Coronavirus

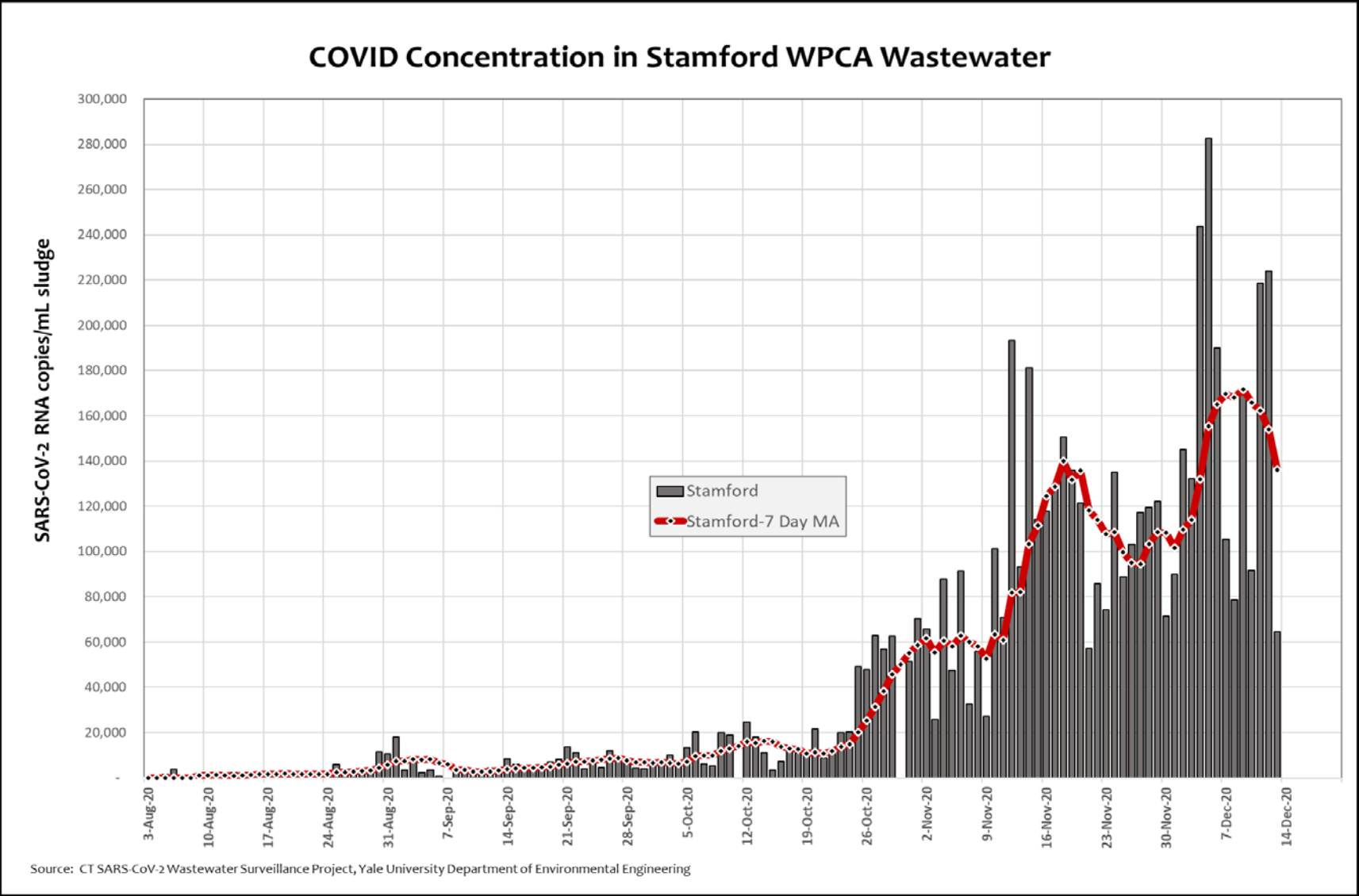
Stamford Residents COVID-19
cases per 100K per day
within Neighborhoods
(Nov 1 to Nov 30)



Excludes Nursing Homes/Senior Care Facilities

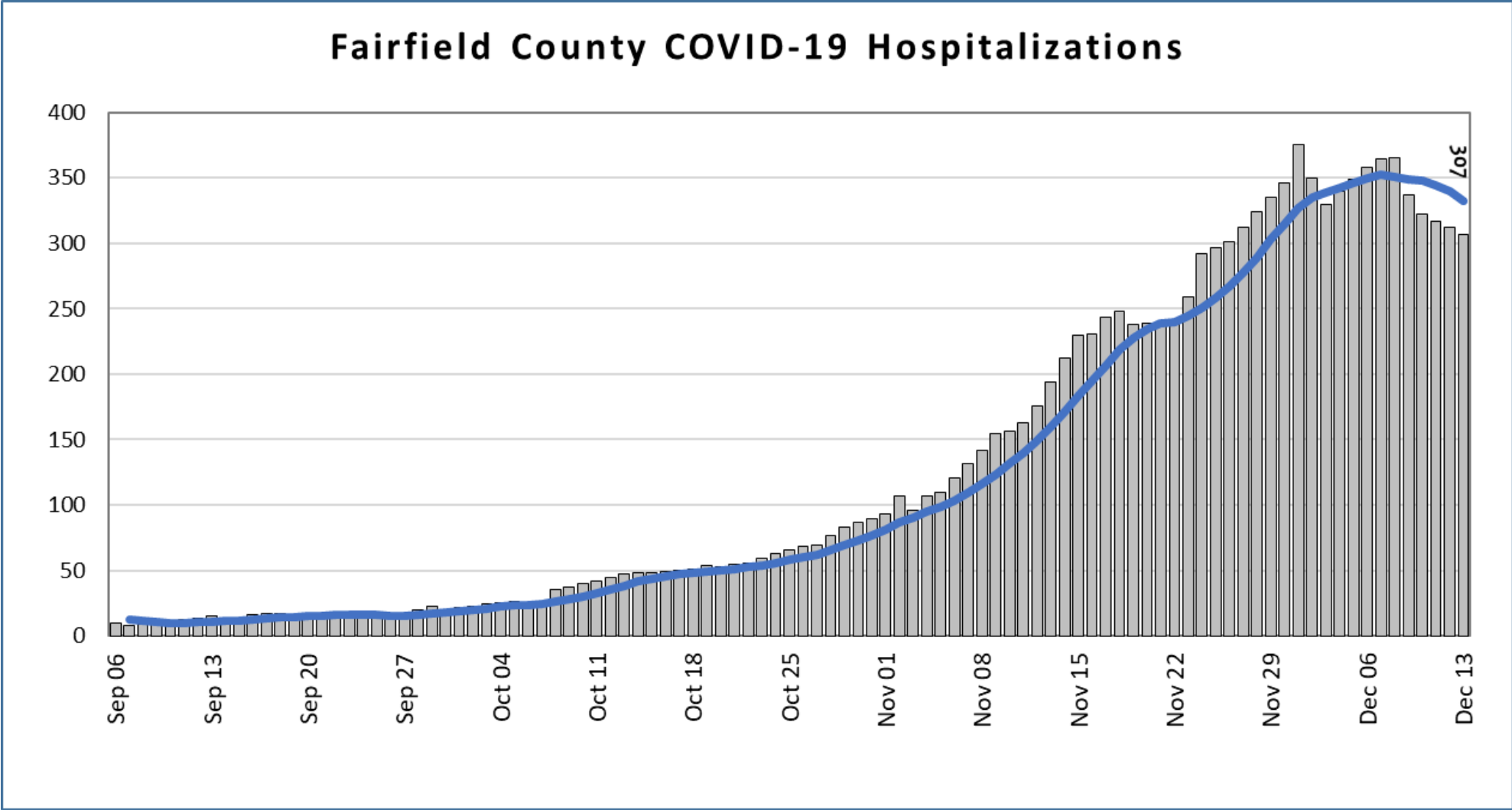
State of the City: COVID19

WPCA Wastewater COVID Concentration



State of the City: COVID19

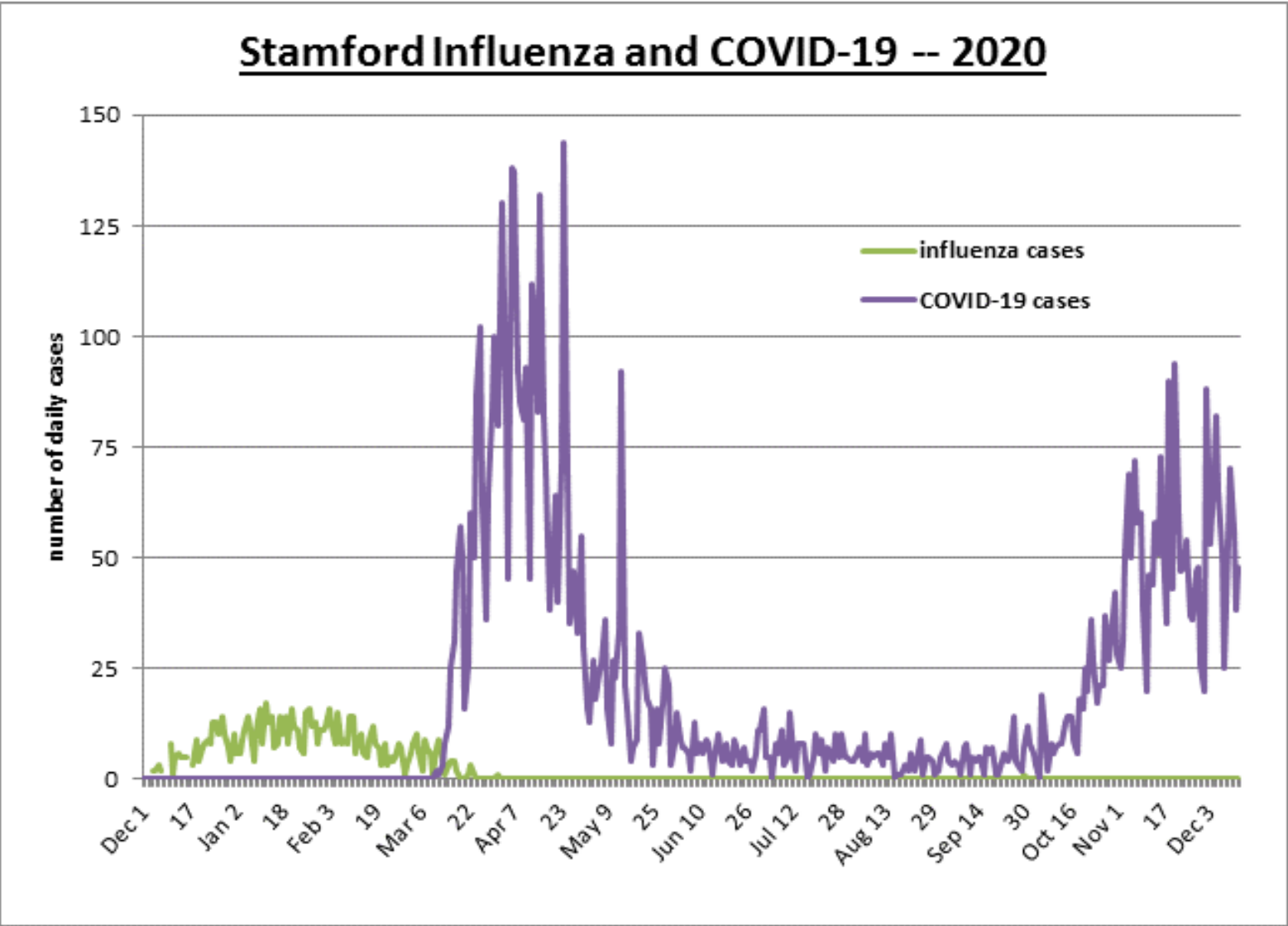
Hospitalization Rate



Source: CT.GOV, downloaded 12/14

State of the City: COVID19

Hospitalizations



Source: Stamford Hospital

COVID Alert CT: What it does

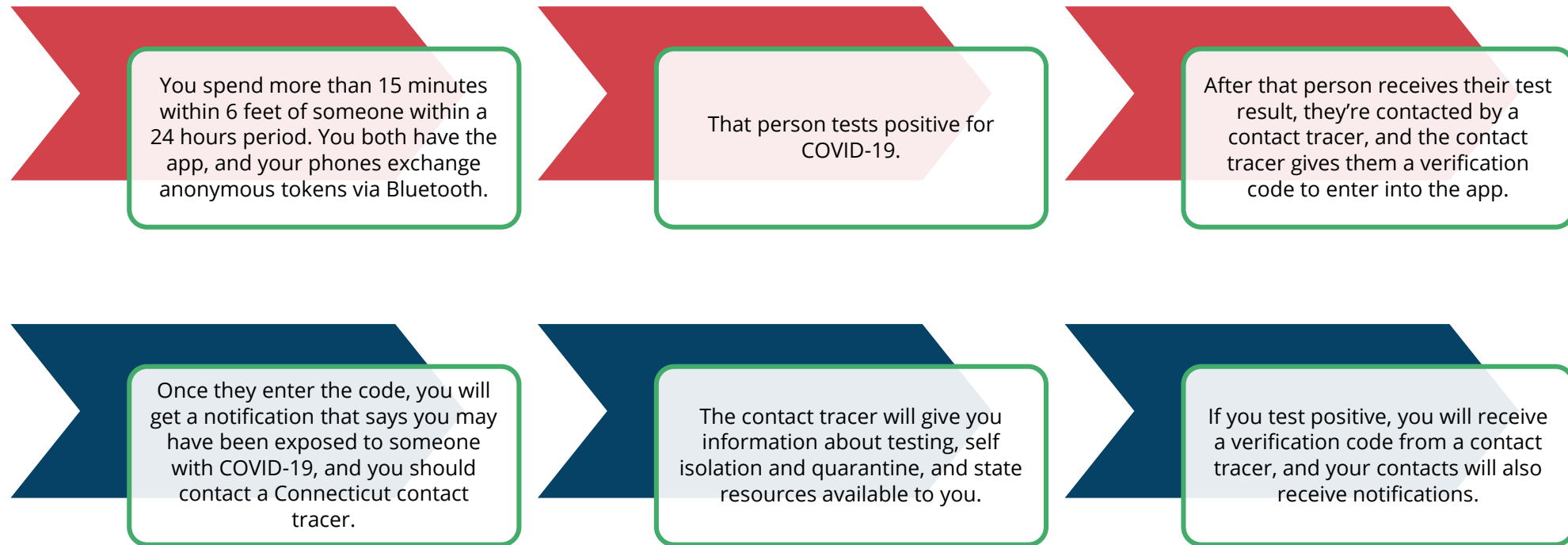
- Find out if you've been near someone who tested positive
- Anonymously report if you test positive
- Your information will be protected, and your location will never be tracked



Basic information

- How the State is doing.
- iPhone v. Android.
- Languages.
- Privacy and your information.
- Other states.
- Where to find information: [**ct.gov/covidalertct**](https://ct.gov/covidalertct)

The Process



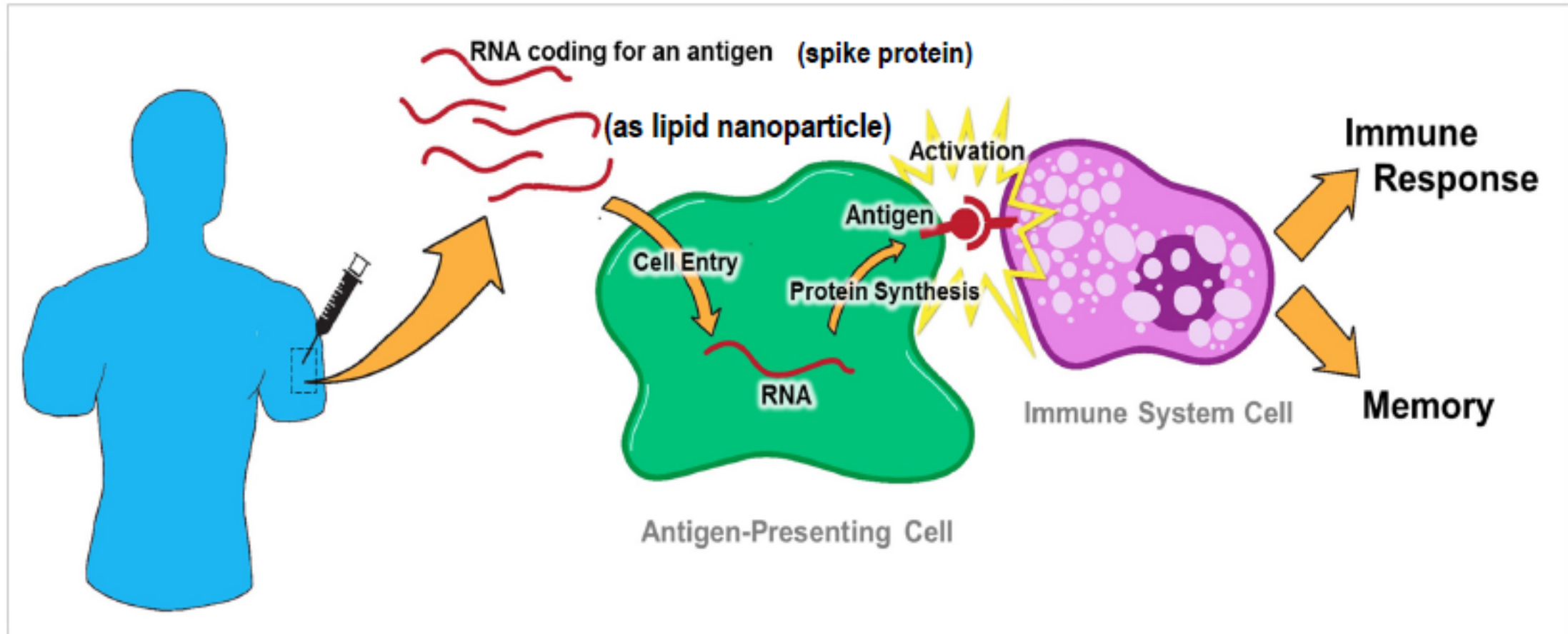
The app works most effectively when more people have it on their phones.



Vaccine Update

How do SARS CoV-2 mRNA vaccines work?

RNA Vaccine Technology





Pfizer vaccine – phase 3 trial results *NEJM 12/10/20*

Trial began on 7/27/20 and enrolled 43,548 adults

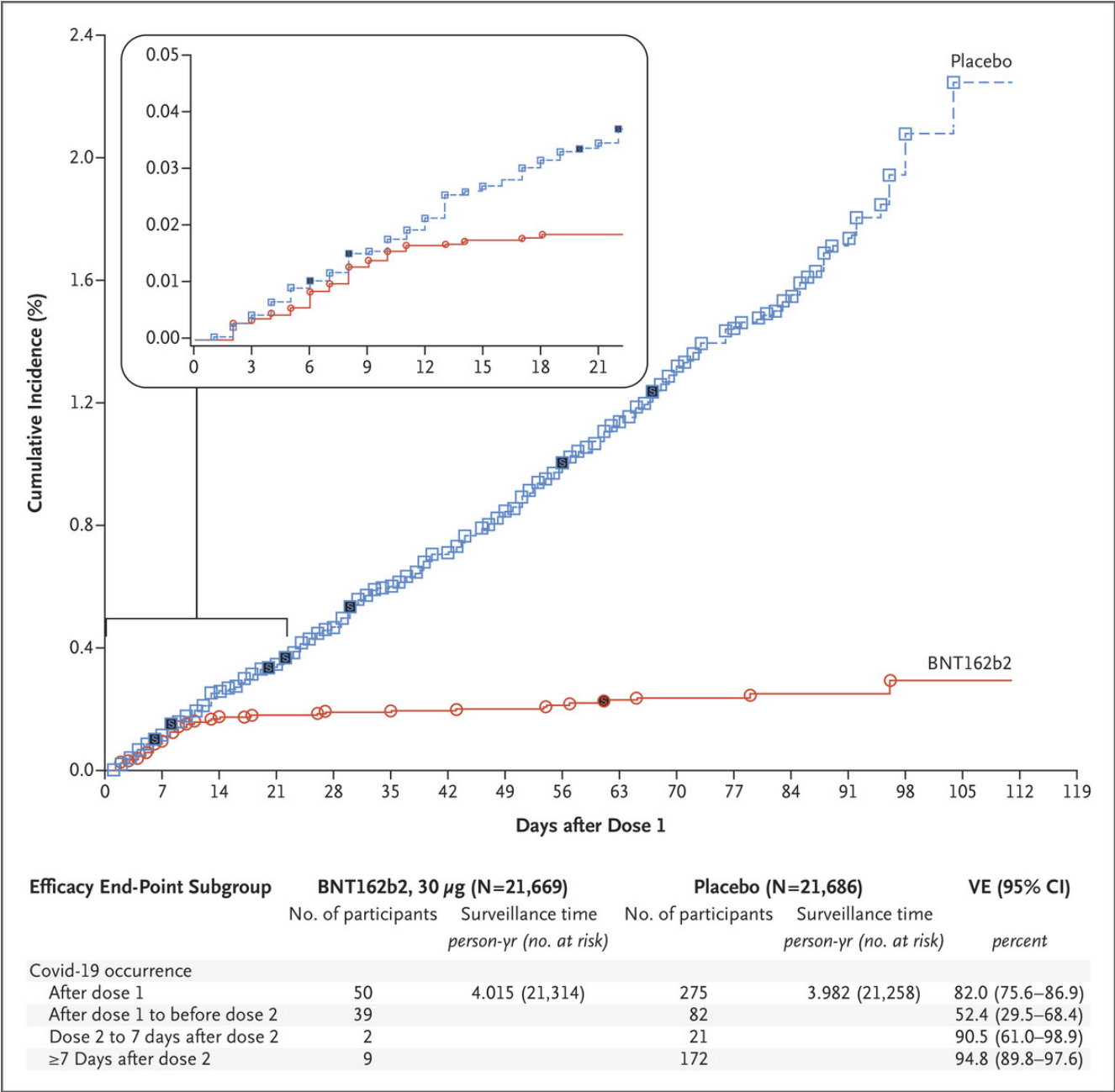
- 37% were “racially and ethnically diverse” backgrounds
- 49% were female
- 42% of patients older than 55 year of age
- 35% had BMI over 30 and 21% had at least one other coexisting condition

Primary analysis -- 95% efficacy against COVID-19

- **162 COVID-19 cases in the placebo group versus 8 in the vaccine group**
- **Efficacy in adults over 65 years of age was 94%**
- **Efficacy was consistent across age, gender, race and ethnicity**
- **9 cases of severe COVID-19 were observed in the placebo group and 1 in the vaccine group**

Vaccine was well tolerated across all populations

Efficacy of the Vaccine





Safety data

- No evident serious safety signals in the trials
- High prevalence of mild flu-like symptoms
 - High frequency of arm pain, fatigue, headache and myalgias
 - Grade 3 adverse reactions: fatigue in 3.8% and headache in 2.0%.
- New suggestion of possible anaphylaxis in those with severe allergy history to prior injectable medication or vaccine
 - Lipid nanoparticle reaction?
- Importance of staggering the schedules of staff within departments
- Prospective safety assessment planned:
 - VAERS online system
 - V-SAFE, new CDC smartphone AP for patients after-vaccination health check and reporting
 - Vaccine Safety Datalink (VSD) - collaboration between CDC and several HCOs to conduct ongoing safety monitoring in large populations
 - Phase 4 randomized trials problematic

Still Unknown...

- How long will the vaccine immunity last?
- Will there be a need for annual revaccination like the flu vaccine?
- Still insufficient data on:
 - The effect of the vaccine in **pregnant women**
 - The effect of the vaccine in **breastfeeding women**
 - **Pediatric use**
- The Pfizer vaccine interaction with other COVID-19 vaccines
- Ability to administer the vaccine simultaneously with other routine vaccines
- Use of the Pfizer vaccine in persons who received monoclonal antibodies or convalescent plasma.

State of the City: COVID19

Stamford Department of Health



- **COVID-19 Vaccine Status:**

- Pfizer received **Emergency Use Authorization (EUA)** approval
 - Pfizer vaccine is now shipping in Connecticut
- Moderna expected to receive EUA approval this week
- NONE ARE LIVE VIRUS VACCINES
- TWO (2) DOSES of the SAME VACCINE are needed THREE (3) WEEKS APART
- Persons who were previously infected with COVID-19 or had COVID-19 disease may be vaccinated
- Persons who are in the community who are on quarantine or currently infected should wait until the isolation or quarantine period is over to get vaccinated
- Vaccines are FREE to everyone





State of the City: COVID19

Stamford Department of Health

Vaccine Distribution:

- **Phase 1A HAS STARTED** (Focus is persons a very high risk of exposure)
 - Critical Infrastructure workforce
 - Healthcare workers
 - First responders
 - COVID-19 vaccinators
 - Persons at increased risk of COVID-19 illness
 - Long term care
- **Who will be providing the vaccinations during Phase 1A?**
 - Hospitals
 - Long term care facilities
 - Pharmacies
 - Federally Qualified Health Centers

State of the City: COVID19

Stamford Department of Health



- **Vaccine Distribution**

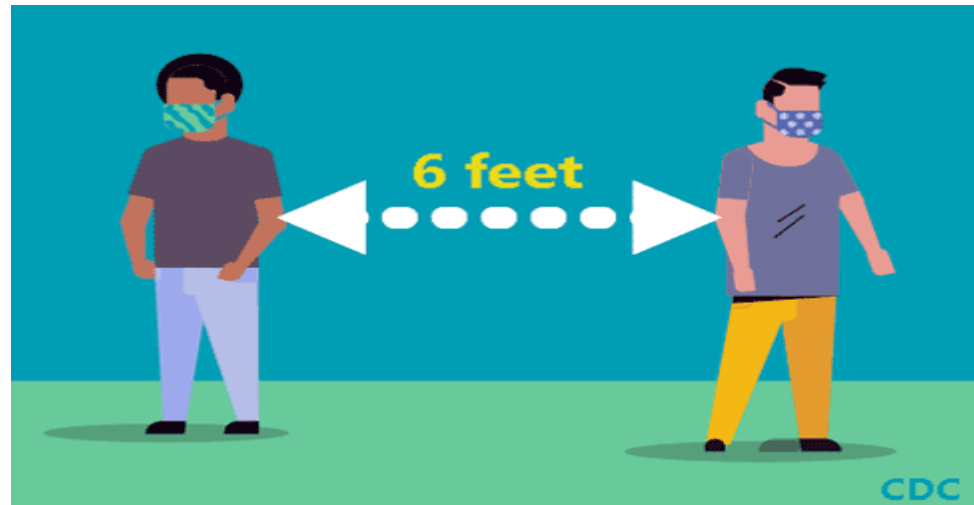
- **Phase 1**-Limited supply of COVID-19 vaccine available
 - Phase 1A – Now
 - Phase 1B – Late January or February ???
 - Critical Workers & Teaching Staff
 - Adults over 65 and High Risk Individuals under 65
- **Phase 2**-Large number of vaccine doses available
- **Phase 3**-Sufficient supply of vaccine doses for entire population



State of the City: COVID19

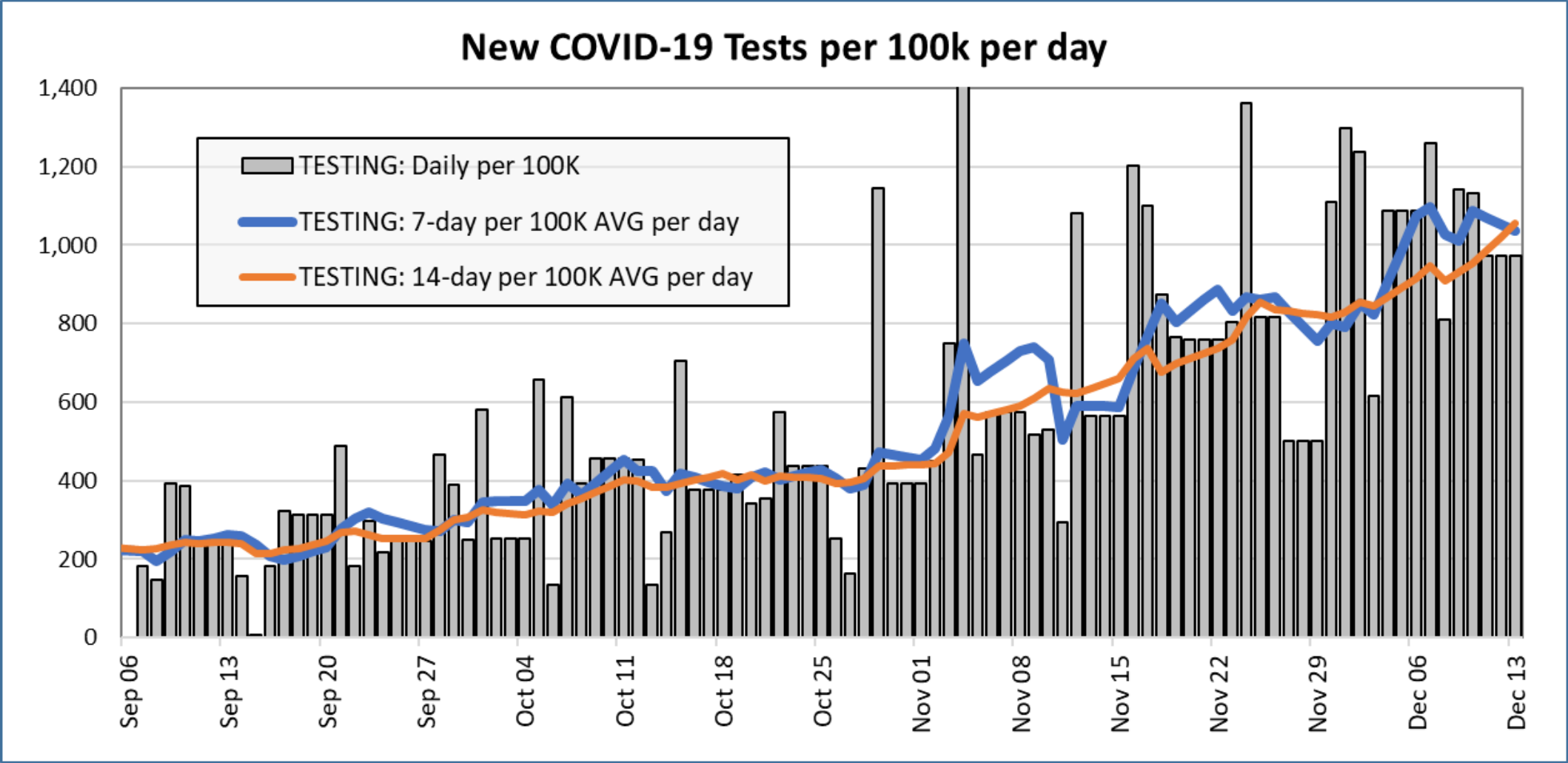
Stamford Department of Health

- We will all need to continue our mitigation measures even if vaccinated
 - Wear a mask
 - Wash your hands frequently
 - Social distance
 - Get tested



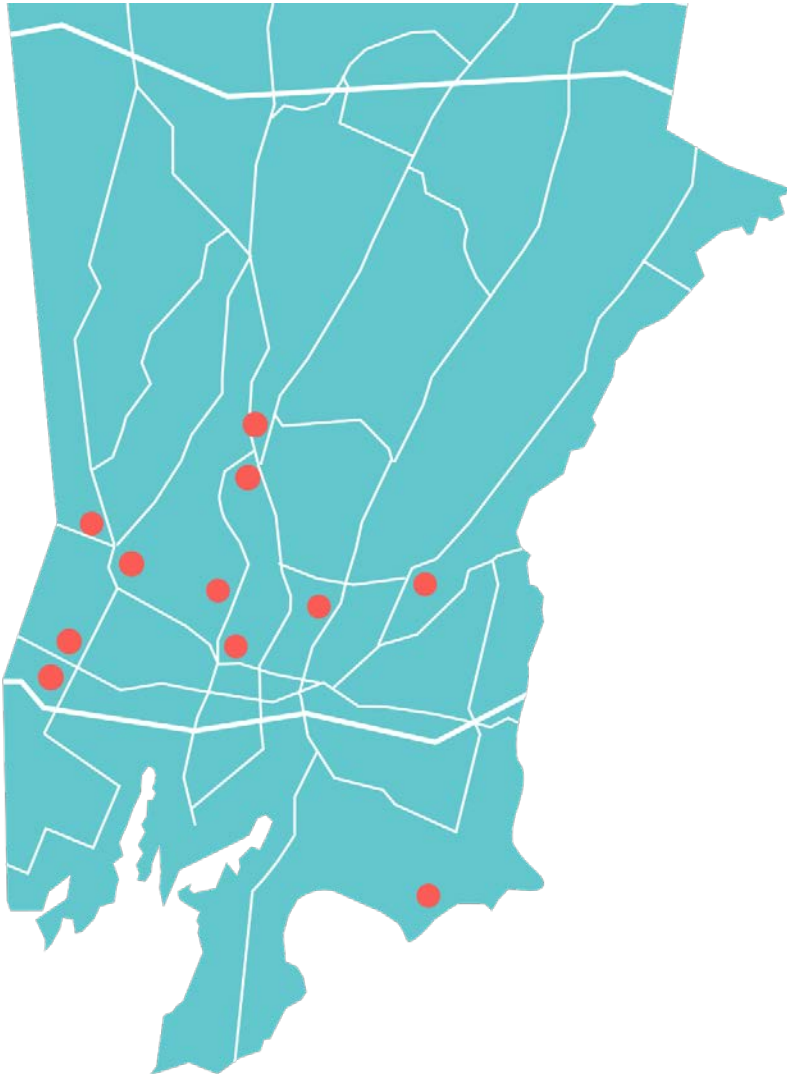
State of the City: COVID19

Testing Trends

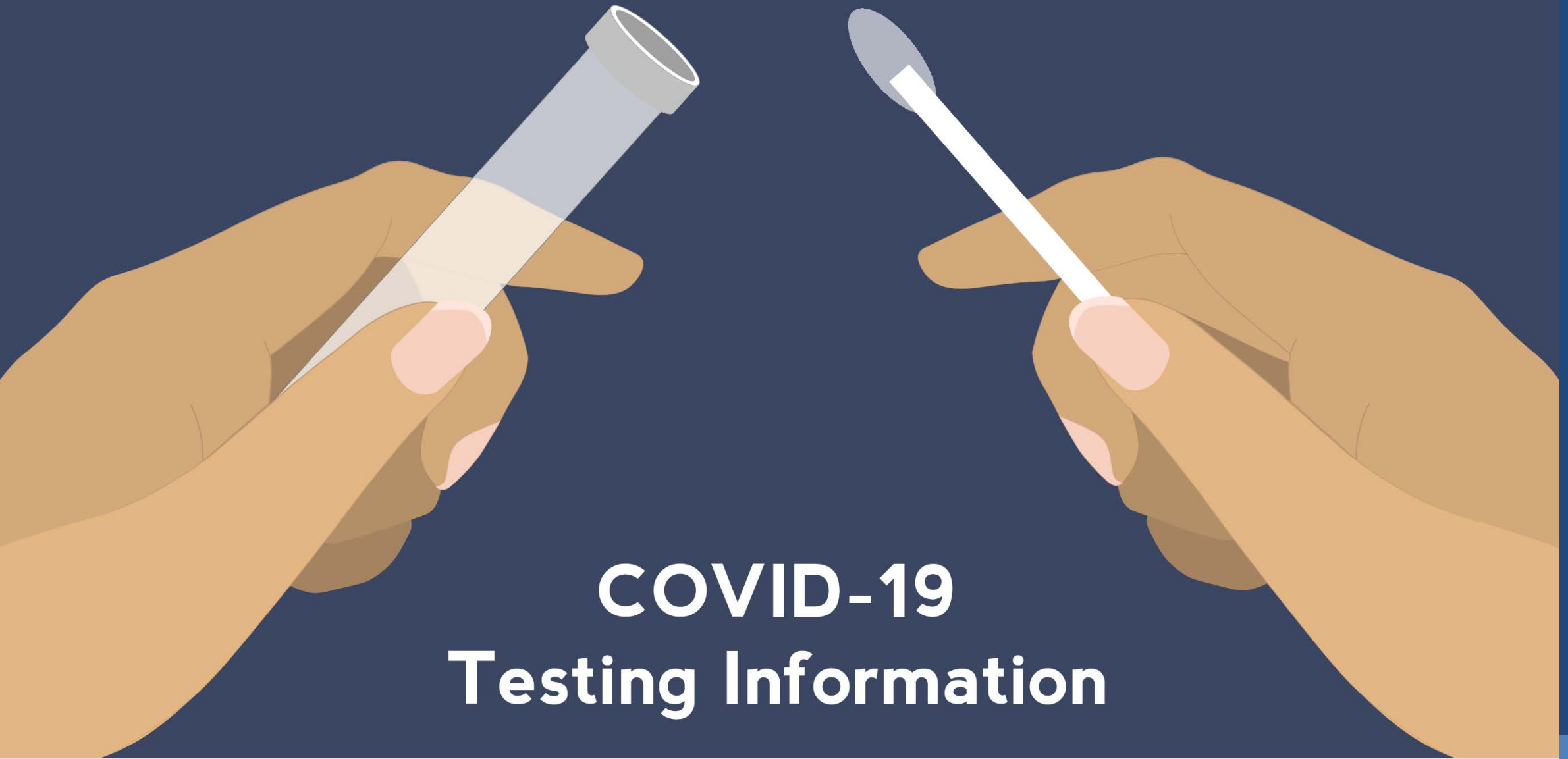


Source: CT.GOV, downloaded 12/14

COVID-19 Testing Update



- **Free Testing Sites (No Insurance Necessary):**
 - Cove Island Park at Terry Conners Rink (daily, 8:30am-4pm)
 - Scalzi Park (daily, 8:30am-4pm)
 - UConn Stamford (M-F, 9am-4pm)
 - 60 Palmer's Hill Road (M-F, 10am-2pm)
 - Stamford High School Hillandale Parking Lot
 - Sunday, 10am-2pm
 - Tuesday, 4pm-7pm
- **Additional Testing Sites in Stamford:**
 - Testing is generally covered by insurance
 - Check with your carrier to confirm coverage
- **Check City of Stamford website for a list of test sites and regular updates**



COVID-19 Testing Information

www.stamfordct.gov/covid-testing

State of the City: COVID19

Health Protocols



Protect your community



Think of the health of your family, wear a mask.

Wear Mask Over Nose & Mouth

PROTECT YOUR COMMUNITY



Social Distancing

STOP:

Did you wash your hands for 20 seconds?

They may still be dirty. Wash for 20 seconds to stop the spread of the virus.



Frequent Handwashing

NO LARGE GATHERINGS/PARTIES

All information updated on our website



The screenshot shows the City of Stamford website homepage. At the top, there is a header with the city seal, the text "Welcome to Stamford", a "Select Language" dropdown, a search bar, and a home icon. Below the header is a navigation bar with links: "Our City", "How Do I?", "Residents", "Businesses", "Visitors", and "Online Services". A sidebar on the left contains a list of services: "Emergency Services", "FixIt Stamford", "Online Permit Center", "Stamford Public Schools", "Community Calendar", "Choose Stamford", and "COVID-19 Information" (which is circled in red). Below the sidebar is a portrait of Mayor David Martin. The main content area features a large banner for the "COVID-19 Resource Center" with a background image of a virus particle. The banner lists four resources: "How to get tested", "Volunteer program", "Suspended services", and "Business assistance". Below the banner are three buttons: "Directions & Hours", "How's My Driving?", and "E-Subscriber". At the bottom, there is a section for the "United States Census 2020" with the text "It's not too late to answer the Census".

Welcome to Stamford

Select Language Search

Our City How Do I? Residents Businesses Visitors Online Services

Bulletins News Events Social Media

COVID-19 Resource Center

- How to get tested
- Volunteer program
- Suspended services
- Business assistance

Directions & Hours How's My Driving? E-Subscriber

United States Census 2020

It's not too late to answer the Census