



Playground Maintenance Corp. dba
Playground Medic
146 Broadway
Hawthorne, NY 10532
(914)741-2228 Fax (914)747-3965
Toll Free (866)332-3133
E-mail: info@playgroundmedic.com

PLAYGROUND SAFETY INSPECTION REPORT

DATE: May 16, 2019

SITE: K T Murphy Elementary School
19 Horton Street
Stamford, CT 06902

CLIENT: Stamford Public Schools
Attention: Rich Lyons
888 Washington Boulevard
Stamford, CT 06901

CONTACT PHONE NO. 203-977-4105

DATE OF INSPECTION: April 26, 2019

INSPECTOR: Natale Chionchio
CPSI Certification # 41619-0521
Expiration: 5/1/2021

PURPOSE AND DEFINITIONS

PURPOSE

The purpose of a Playground Safety Inspection is to:

- * Evaluate the overall condition of a playground or playgrounds at a given facility
- * Identify hazardous conditions needing attention
- * Identify Maintenance issues that the owner should be aware of

HAZARD DEFINITIONS

CLASS A HAZARD: Any condition of the playground that is life threatening or could cause severe, permanent disability.

CLASS B HAZARD: Any condition of the playground that could cause a serious but non-disabling injury.

CLASS C HAZARD: Any condition of the playground that can cause a slight injury or any condition that may not cause injury but does not meet either the Guidelines in the CPSC "Handbook for Public Playground Safety" or the ASTM F1487 "Standard Consumer Safety Performance Specifications for Playground Equipment for Public Use."

MAINTENANCE: Repairs needed or recommendations for improvement

STRUCTURAL STABILITY

When properly installed as directed by the manufacturer's instructions and specifications, equipment should withstand the maximum anticipated forces generated by active use which might cause it to overturn, tip, slide or move in any way.

Stability of play equipment is tested by digging around equipment footings and checking for deterioration or signs of movement that would indicate structural instability.

SURFACING

DEPTH: The surfacing under and around the playground equipment can be a major factor in determining the injury causing potential of a fall. A fall onto a shock-absorbing surface is less likely to cause a serious injury than a fall onto a hard compacted surface. Inadequate surfacing material is usually a CLASS A HAZARD depending on the surfacing material.

The depth of surfacing material is checked by digging down to the sub base in heavy wear and low wear areas.

USE ZONE: The surface under and around a piece of equipment onto which a child falling from or exiting from the equipment would be expected to land. These areas are also designated for unrestricted circulation around the equipment.

Use Zone is checked on all equipment by measurements in accordance with CPSC guidelines.

CONDITION EXPLANATION

Equipment and surfacing conditions will be identified as "Good", "Fair" or "Poor". This is a general classification and will indicate:

- | | |
|------|---|
| Good | * No Corrective action needed |
| Fair | * Some corrective action needed |
| Poor | * Extensive corrective action needed |

K T MURPHY ELEMENTARY SCHOOL
Area #1

Overview

This playground is in fair condition. There are equipment and surface hazards and maintenance issues to address.

EQUIPMENT INVENTORY

Small Composite Structure #1

Manufacturer

GameTime



Large Composite Structure #2



GameTime



Freestanding Equipment

Funnel Ball
BCI Burke



8ft. Swing Set (2Bays/4Belt Seats)
Unknown



9ft. Swing Set (2Bay/4Belt)

Unknown



SURFACING MATERIAL

Engineered Wood Fiber

MANUFACTURER CONTACT INFORMATION

GameTime
PO Box 680121
Ft. Payne, AL 35968-0121
800-633-2394
www.gametime.com

BCI Burke Company, LLC
660 Van Dyne Road
PO Box 549
Fond du Lac, WI 54936-0549
800-356-2070
www.bciburke.com

GENERAL PLAYGROUND ENVIRONMENT**Playground Condition:****FAIR****Area #** 1**General Site Conditions**

		Condition	Hazard	Recommendation
1	Playground Location at Facility	Front left side of school		
	Number of footings in area	86		
2	Distance from roads and parking lots	15 feet		
3	Fencing-total, partial, height, type	Total - Wall & 6ft. Chain Link		
	Condition	Good		
4	Traffic or fence hazard	None		
5	Site conditions-level, hill, pitched	Level		
6	Drainage Problems	None		
7	Encroachment of brush or poisonous plants-where	None		
8	Bees or insects/animals noted	None		
9	Site Amenities-bench, TR, Table	Bench		
	Condition	Good		
10	Border/Edging-type	Asphalt		
	Condition of edging	Good		
11	Shade Structure or shade	Roof		
12	Signage			
	Age Appropriate Signs/Stickers?	Yes		
	Equipment Age Appropriate, 2-5, 5-12	5-12 years		
	Adult Supervision sign or sticker?	Yes		
	Warning Signs installed?			
	Hard Surface	Yes		
	Heat	Yes		
	Drawstring/Strangulation	Yes		

General Site Conditions	Condition	Hazard	Recommendation
Surface Marker signs on uprights?	Yes		
Playground Rules & General Information Sign?	No	Maint.	See Notes

13 Accessibility

Accessible Entrance 36" wide ?	Yes
Accessible path to play area ?	Yes
Accessible surface in use zone?	Yes

Notes:

It is recommended that signs be installed indicating playground rules and general information.

K T MURPHY ELEMENTARY SCHOOL

AREA #1 CONDITION REPORT

		Condition	Hazard Priority	Recommendation
Small Composite Structure #1 (GameTime)				
Components				
Swift Rider Slide		Good		
Chain Net Climber with Rails		Brackets & "S"-Hooks worn	B	Replace rail/bracket combo (2) & two "S"- Hooks
		Plastisol cracked at chain	Maint.	Monitor
Transfer Platform		Plastisol worn & missing	Maint.	Monitor
"S" Horizontal Loop Ladder		Good		
Overhead Ladder		Good		
Rung Ladders (3)		Good		
Glide Slide		Good		
Clover Climber		Good		
Decks (7)		Plastisol worn & missing	Maint.	Monitor
Pyramid Roof (1)		Good		
Stairs (1)		Cracked at joint	Maint.	Replace stairs at Transfer Platform
Surfacing	EWf 9-12"	Good		
		No wear mats at slide exits	C	See Notes
Use Zone		Good		
Structural Stability		Good		
Large Composite Structure #2 (GameTime)				
Components				
Bubble Climber		Good		
Double Trapeze Rings		Good		
Inverted Arch Ladder		Good		
Three Level Chinning Bar		Good		
Bannister Rails		Good		
Stairs (2)		Good		
Overhead Horizontal Ladder		Good		

AREA #1 CONDITION REPORT

		Condition	Hazard Priority	Recommendation
Arch Bridge		Good		
Straight Poly Slide		Good		
Tree Climber		Good		
Transfer Platform		Step broken & sharp	B	Replace step at Transfer Platform
Curved Slide		Bed way cracked at support	Maint.	Monitor
Crawl Tube		Good		
Suspension Bridge		Good		
Crazy Eight Climber		Good		
Spiral Slide		Good		
Chain Net Climber		Good		
Bugeye Bubble Panel		Good		
Tic Tac Toe (Baseball)		Good		
Solar System Panel		Good		
Decks (11)		Two □ decks cracked, one Δ deck at joints	Maint.	Replace one Δ deck & two □ deck
Surfacing	EWf 8-12"	Good		
		No wear mats at slide exits	C	See Notes
Use Zone		Good		
Structural Stability		Good		
Freestanding Equipment				
Funnel Ball (BCI Burke)		Bucket very loose at bolts	Maint.	Tighten hardware
Surfacing		N/A		
Use Zone		N/A		
Structural Stability		Good		

AREA #1 CONDITION REPORT

			Condition	Hazard Priority	Recommendation
8ft. Swing Set #1(2 Bays/4 Belt Seats (Unknown)			Good		
Surfacing	EWF 9-12"		Good		
Use Zone		Light post in use zone 12ft. from center		B	Relocate post outside of use zone
Structural Stability		Frame not level, pitched up at center		Maint.	Monitor
9ft. Swing Set #2 (2 Bays/4 Belt Seats (Unknown)			Good		
Surfacing	EWF 6-12"	Low in spots		B	Add EWF & level
Use Zone		Overlaps with composite structure, 22 ft. to composite, 13ft. to wall & 15ft. to bench		B	Relocate swing set & create clear 18ft. use zone at front & back & 6ft. at sides
Structural Stability		One post bent		Maint.	Monitor

Notes:

There are no wear mats at the slide exits. ADA requires wear mats for accessibility and the prevention of holes at the slide exits.

It is the playground owner's responsibility to maintain the test results for the safety surfacing showing that the depth is appropriate for the fall height of the equipment in the playground.

Hazard and Maintenance Pictures
Area #1

Small Composite Structure #1 - GameTime
Chain Net Climber - Plastisol cracked at chain - MAINTENANCE



Chain Net Climber w/ Rails - Brackets & "S"- Hooks worn - CLASS B HAZARD

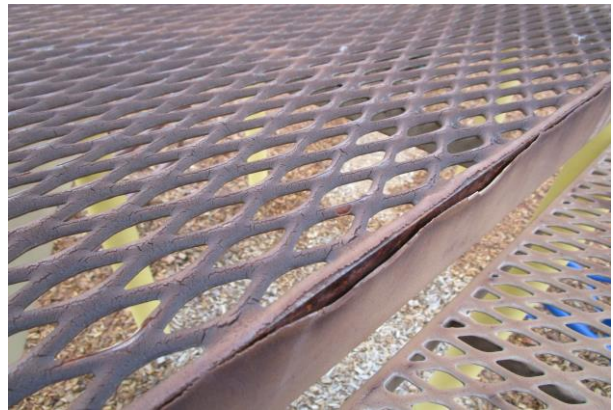


Transfer Platform - Platisol worn & missing - MAINTENANCE





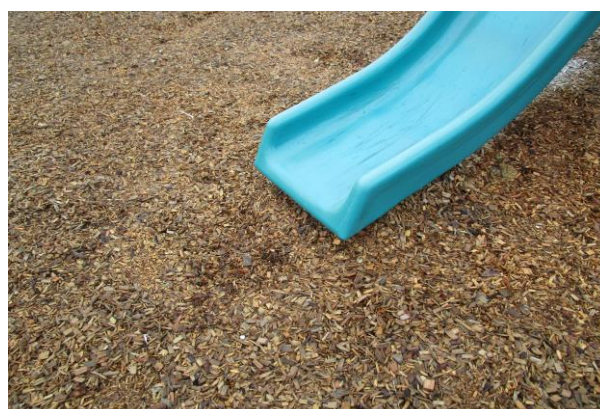
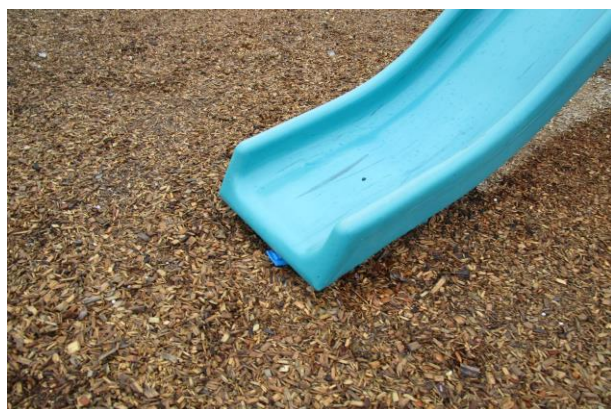
Decks (7) - Plastisol worn & missing - MAINTENANCE



Stairs (1) - Cracked at joint - MAINTENANCE

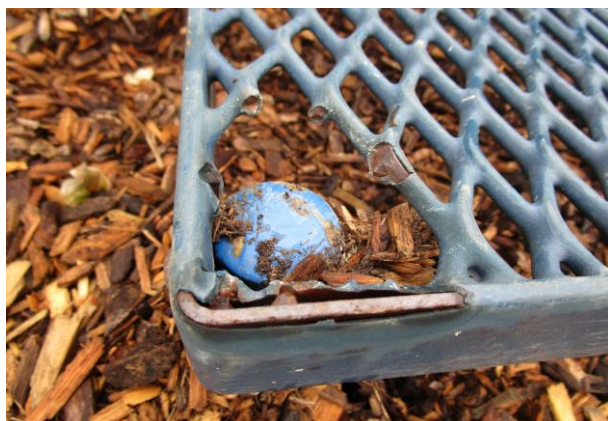
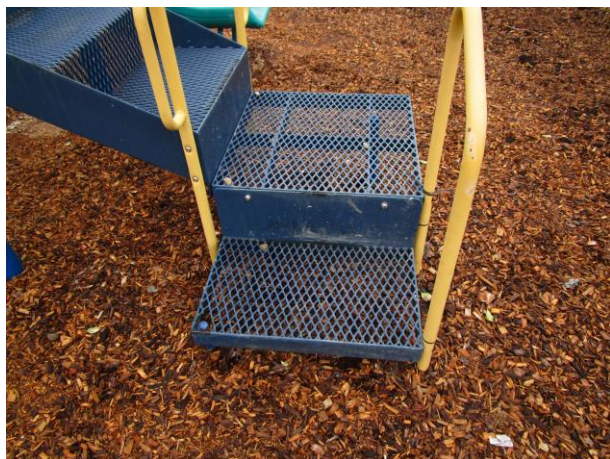


Surfacing - No wear mats at slide exits - CLASS C HAZARD



Large Composite #2 - GameTime

Transfer Platform - Step broken & sharp - CLASS B HAZARD



Curved Slide - Bed way cracked at support - MAINTENANCE



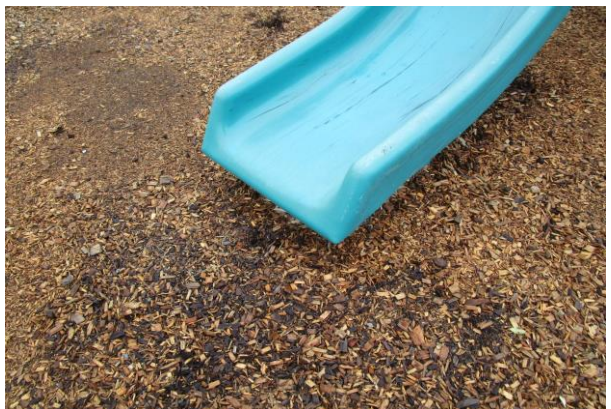


Decks (11) - Two square decks cracked & one triangle deck at joints - MAINTENANCE





Surfacing - No wear mats at slide exits - CLASS C HAZARD



Freestanding Equipment

Funnel Ball - Bucket very loose at bolts - MAINTENANCE



8ft. Swing Set #1 (2Bay/4Belts)(Unk) - Light post in use zone, 12ft. from center -
CLASS B HAZARD



8ft. Swing Set #1 - Frame not level, pitched up at center - MAINTENANCE



9ft. Swing Set - Use Zone overlaps with composite structure use zone - CLASS B HAZARD



Structural Stability - One post bent - MAINTENANCE



K T MURPHY ELEMENTARY SCHOOL
Area #2

Overview

This playground is in fair condition. There are equipment and surface hazards and one maintenance issue to address.

EQUIPMENT INVENTORY

Small Composite Structure

Manufacturer

Play & Park Structures



SURFACING MATERIAL

Engineered Wood Fiber

**MANUFACTURER CONTACT
INFORMATION**

Play & Park Structures

430 Chestnut Street, Suite 300

Chattanooga, TN 37402

888-404-5737

www.parkstructures.com

GENERAL PLAYGROUND ENVIRONMENTArea # 2**Playground Condition:****FAIR****General Site Conditions**

		<u>Condition</u>	<u>Hazard</u>	<u>Recommendation</u>
1	Playground Location at Facility Number of footings in area	Back of school 33		
2	Distance from roads and parking lots	10 feet		
3	Fencing-total, partial, height, type Condition	Total - 6ft. & 8ft. Chain link Good		
4	Traffic or fence hazard	None		
5	Site conditions-level, hill, pitched	Pitched		
6	Drainage Problems	None		
7	Encroachment of brush or poisonous plants-where	None		
8	Bees or insects/animals noted	None		
9	Site Amenities-bench, TR, Table	Picnic Tables		
10	Border/Edging-type Condition of edging	Plastic ties Good		
11	Shade Structure or shade	Trees		
12	Signage			
	Age Appropriate Signs/Stickers?	Good		
	Equipment Age Appropriate, 2-5, 5-12	5-12 years		
	Adult Supervision sign or sticker?	Yes		
	Warning Signs installed?			
	Hard Surface	Yes		
	Heat	Yes		
	Drawstring/Strangulation	Yes		

General Site Conditions	<u>Condition</u>	<u>Hazard</u>	<u>Recommendation</u>
Surface Marker signs on uprights?	Yes		
Playground Rules & General Information Sign?	No	Maint.	See Notes

13 Accessibility

Accessible Entrance 36" wide ?	Yes
Accessible path to play area ?	Yes
Accessible surface in use zone?	Yes

Notes:

It is recommended that signs be installed indicating playground rules and general information.

K T MURPHY ELEMENTARY SCHOOL

AREA #2 CONDITION REPORT

		Condition	Hazard Priority	Recommendation
Small Composite Structure (Play & Park Structures)				
Components				
Stairs (2)		Good		
Apex Climbing Link		Good		
Max Climb Ridge Top		Good		
Chime Panel (below)		Good		
Table & Bench (below)		Good		
Avalanche Slide		One protruding bolt at deck under center slide	B	Cut one bolt down
Fire Pole		Good		
Spiral Step Climber		Good		
Balcony with Wheel		Wheel missing	Maint.	Replace wheel
Decks (4)		Good		
Transfer Platform		Good		
Surfacing	EWf 5-12"	Insufficient	A	Add EWf & level
		One wear mat deteriorated & two wear mats missing at slide exits	C	See Notes
Use Zone		Good		
Structural Stability		Good		

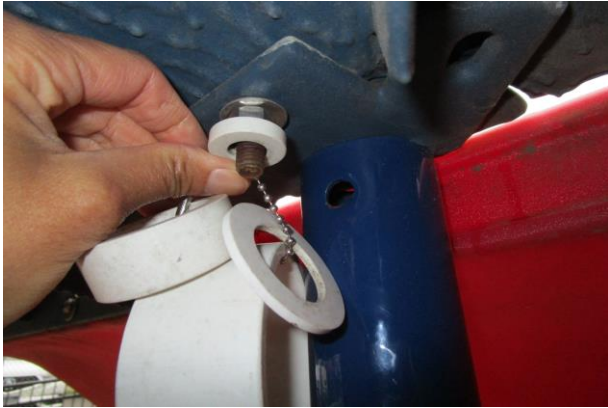
Notes:

It is the playground owner's responsibility to maintain the test results for the safety surfacing showing that the depth is appropriate for the fall height of the equipment in the playground.

Hazard and Maintenance Pictures
Area #2

Small Composite (Play & Park Structures)

Avalanche Slide - Protruding bolt under center slide - CLASS B HAZARD

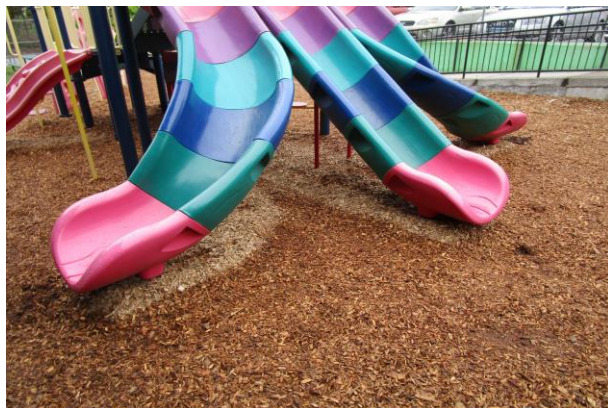


Balcony with Wheel - Wheel missing - MAINTENANCE



Surfacing - One wear mat deteriorated & two mats missing at slide exits -

CLASS C HAZARDS



**K T Murphy Elementary School
Area #3**

Overview

This playground is in good condition. There is a maintenance issue to address.

EQUIPMENT INVENTORY

Small Composite Structure



Freestanding Equipment

Paint Station

Play & Park Structures



**U.S. Map
Play & Park Structures**



Math Panel

Play & Park Structures



SURFACING MATERIAL

Engineered Wood Fiber

MANUFACTURER CONTACT INFORMATION

Play & Park Structures

430 Chestnut Street, Suite 300

Chattanooga, TN 37402

800-727-1907

www.parkstructures.com

GENERAL PLAYGROUND ENVIRONMENT**Playground Condition:****GOOD****Area #** 3**General Site Conditions**

		<u>Condition</u>	<u>Hazard</u>	<u>Recommendation</u>
1	Playground Location at Facility Number of footings in area	Back of school 32		
2	Distance from roads and parking lots	50 feet		
3	Fencing-total, partial, height, type	Total - 6ft. Chain link		
4	Traffic or fence hazard	None		
5	Site conditions-level, hill, pitched	Level		
6	Drainage Problems	None		
7	Encroachment of brush or poisonous plants-where	None		
8	Bees or insects/animals noted	None		
9	Site Amenities-bench, TR, Table Condition	None N/A		
10	Border/Edging-type Condition of edging	Plastic Timbers Good		
11	Shade Structure or shade	Roof		
12	Signage			
	Age Appropriate Signs/Stickers?	Yes		
	Equipment Age Appropriate, 2-5, 5-12	2-5 years		
	Adult Supervision sign or sticker?	Yes		
	Warning Signs installed?			
	Hard Surface	Yes		
	Heat	Yes		
	Drawstring/Strangulation	Yes		

General Site Conditions	<u>Condition</u>	<u>Hazard</u>	<u>Recommendation</u>
Surface Marker signs on uprights?	Yes		
Playground Rules & General Information Sign?	No	Maint.	See Notes

13 Accessibility

Accessible Entrance 36" wide ?	Yes
Accessible path 60" wide to play area ?	Yes
Accessible surface in use zone?	Yes

Notes:

It is recommended that signs be installed indicating playground rules and general information unless the facility is closed to outside users.

K T Murphy Elementary School
Area #3

			Condition	Hazard Priority	Recommendation
Small Composite Structure (Play & Park Structures)					
Components					
Transfer Platform			Good		
Access Step (1)			Good		
			Good		
Double Velocity Slide					
Apex Climber			Good		
Single Velocity Slide			Good		
Post Mounted Seat			Good		
			Good		
Inclined Wall Climber					
Steering Wheel			Good		
Decks (2)			Good		
Surfacing	EWf 6-12"		Good	Maint.	Rake to level
		No wear mats at slide exits		C	See Notes
Use Zone			Good		
Structural Stability			Good		
Freestanding Equipment (Play & Park Structures)					
Paint Station					
			Good		
Surfacing			N/A		
Use Zone			N/A		
Structural Stability			Good		
U.S. Map Panel					
			Good		
Surfacing			N/A		
Use Zone			N/A		
Structural Stability			Good		

	Condition	Hazard Priority	Recommendation
Math Panel	Good		
Surfacing	N/A		
Use Zone	N/A		
Structural Stability	Good		

Notes:

There are no wear mats at the slide exits. ADA requires wear mats for accessibility and the prevention of holes at the slide exits.

It is the playground owner's responsibility to maintain the test results for the safety surfacing showing that the depth is appropriate for the fall height of the equipment in the playground.

Hazard and Maintenance Pictures
Area #3

Small Composite Structure (Play & Park Structures)

Surfacing - No wear mats at slide exits - CLASS C HAZARD

