



Playground Maintenance Corp. dba
Playground Medic
146 Broadway
Hawthorne, NY 10532
(914)741-2228 Fax (914)747-3965
Toll Free (866)332-3133
E-mail: info@playgroundmedic.com

PLAYGROUND SAFETY INSPECTION REPORT

DATE: May 16, 2019

SITE: Rippowam Middle School & Early Childhood Project
381 High Ridge Road
Stamford, CT 06905

CLIENT: Stamford Public Schools
Attention: Rich Lyons
888 Washington Boulevard
Stamford, CT 06901

CONTACT PHONE NO. (203) 977-4105

DATE OF INSPECTION: May 1, 2019

INSPECTOR: Natale Chionchio
CPSI Certification # 41619-0521
Expiration: 5/1/2021

PURPOSE AND DEFINITIONS

PURPOSE

The purpose of a Playground Safety Inspection is to:

- * Evaluate the overall condition of a playground or playgrounds at a given facility
- * Identify hazardous conditions needing attention
- * Identify Maintenance issues that the owner should be aware of

HAZARD DEFINITIONS

CLASS A HAZARD: Any condition of the playground that is life threatening or could cause severe, permanent disability.

CLASS B HAZARD: Any condition of the playground that could cause a serious but non-disabling injury.

CLASS C HAZARD: Any condition of the playground that can cause a slight injury or any condition that may not cause injury but does not meet either the Guidelines in the CPSC "Handbook for Public Playground Safety" or the ASTM F1487 "Standard Consumer Safety Performance Specifications for Playground Equipment for Public Use."

MAINTENANCE: Repairs needed or recommendations for improvement

STRUCTURAL STABILITY

When properly installed as directed by the manufacturer's instructions and specifications, equipment should withstand the maximum anticipated forces generated by active use which might cause it to overturn, tip, slide or move in any way.

Stability of play equipment is tested by digging around equipment footings and checking for deterioration or signs of movement that would indicate structural instability.

SURFACING

DEPTH: The surfacing under and around the playground equipment can be a major factor in determining the injury causing potential of a fall. A fall onto a shock-absorbing surface is less likely to cause a serious injury than a fall onto a hard compacted surface. Inadequate surfacing material is usually a CLASS A HAZARD depending on the surfacing material.

The depth of surfacing material is checked by digging down to the sub base in heavy wear and low wear areas.

USE ZONE: The surface under and around a piece of equipment onto which a child falling from or exiting from the equipment would be expected to land. These areas are also designated for unrestricted circulation around the equipment.

Use Zone is checked on all equipment by measurements in accordance with CPSC guidelines.

CONDITION EXPLANATION

Equipment and surfacing conditions will be identified as "Good", "Fair" or "Poor". This is a general classification and will indicate:

- | | |
|------|---|
| Good | * No Corrective action needed |
| Fair | * Some corrective action needed |
| Poor | * Extensive corrective action needed |

RIPPOWAM MIDDLE SCHOOL
Area #1

Overview

This playground is in good condition. There is one maintenance issue to address.

EQUIPMENT INVENTORY
Small Composite Structure

Manufacturer
Little Tikes



**Freestanding Equipment
Bernie Bus**



Playworld



Drum Set



Playworld



**Rubber Track
Gas Stations**



BCI Burke



Drive Thru w/ Menu & Talk Tubes



BCI Burke



**Stop Sign
BCI Burke**



**Speed Limit Sign
BCI Burke**



SURFACING MATERIAL

Poured in Place Rubber

**MANUFACTURER CONTACT
INFORMATION**

Playworld Systems
1000 Buffalo Road
Lewisburg, PA 17837
800-233-8404
www.playworldsystems.com

Little Tikes
1 Iron Mountain Drive
Farmington, MO 63640
800-325-8828
www.littletikescommercial.com

BCI Burke Company, LLC
660 Van Dyne Road
PO Box 549
Fond du Lac, WI 54936-0549
800-356-2070
www.bciburke.com

GENERAL PLAYGROUND ENVIRONMENT**Playground Condition:****GOOD****Area #** 1**General Site Conditions**

		Condition	Hazard	Recommendation
1	Playground Location at Facility Number of footings in area	Interior Courtyard 31		
2	Distance from roads and parking lots	200 feet		
3	Fencing-total, partial, height, type	Inside courtyard		
4	Traffic or fence hazard	None		
5	Site conditions-level, hill, pitched	Level		
6	Drainage Problems	None		
7	Encroachment of brush or poisonous plants-where	None		
8	Bees or insects/animals noted	None		
9	Site Amenities-bench, TR, Table Condition	Bench & TR Good		
10	Border/Edging-type	N/A		
11	Shade Structure or shade	Shade & trees		
12	Signage			
	Age Appropriate Signs/Stickers?	Yes		
	Equipment Age Appropriate, 2-5, 5-12	2-5 years		
	Adult Supervision sign or sticker?	Yes		
	Warning Signs installed?			
	Hard Surface	Yes		
	Heat	Yes		
	Drawstring/Strangulation	Yes		

General Site Conditions	Condition	Hazard	Recommendation
Surface Marker signs on uprights?	N/A		
Playground Rules & General Information Sign?	No	Maint.	See Notes

13 Accessibility

Accessible Entrance 60" wide ?	Yes
Accessible path to play area ?	Yes
Accessible surface in use zone?	Yes

Notes:

It is recommended that signs be installed indicating playground rules and general information if playground is used by others.

RIPPOWAM MIDDLE SCHOOL

AREA #1 CONDITION REPORT

			Condition	Hazard Priority	Recommendation
Small Composite Structure (Little Tikes)					
			Double Slide	Good	
			Single Slide	Good	
			Stairs (1)	Good	
			Decks (2)	Good	
			Telescope Barrier Panel	Good	
			House Entrance Panel	Good	
			Ladder Stairs	Good	
			Arch Bridge	Good	
			Post Mounted	Good	
			Steering Wheel		
	Surfacing	PIP 2½"		Good	
	Use Zone			Good	
	Structural Stability			Good	
Freestanding Equipment					
	Bernie Bus (Playworld)		One bolt missing at rear red bar	Maint.	Replace one bolt
	Surfacing	PIP 2½"		Good	
	Use Zone			Good	
	Structural Stability			Good	
	Drum Set (Playworld)			Good	
	Surfacing	PIP 2½"		Good	
	Use Zone			Good	
	Structural Stability			Good	

AREA #1 CONDITION REPORT

			Condition	Hazard Priority	Recommendation
Rubber Track			Good		
Surfacing	PIP 2½"		Good		
Use Zone			N/A		
Structural Stability			N/A		
Gas Station (Burke)			Good		
Surfacing	PIP 2½"		N/A		
Use Zone			N/A		
Structural Stability			Good		
Drive Thru & Menu w/ Talk Tubes (Burke)			Good		
Surfacing	PIP 2½"		Good		
Use Zone			Good		
Structural Stability			Good		
Stop & Speed Limit Sign (Burke)			Good		
Surfacing	PIP 2½"		N/A		
Use Zone			N/A		
Structural Stability			Good		

Notes:

It is the playground owner's responsibility to maintain the test results for the safety surfacing showing that the depth is appropriate for the fall height of the equipment in the playground.

Hazard and Maintenance Pictures
Area #1

Freestanding Equipment

Bernie Bus (Playworld) - One bolt missing at rear red bar - MAINTENANCE



RIPPOWAM MIDDLE SCHOOL
Area #2

Overview

This playground is in fair condition. There are equipment and surface hazards and maintenance issues to address.

EQUIPMENT INVENTORY

Small Composite Structure

Manufacturer

Play & Park Structures



Freestanding Equipment

9ft. Swing Set (2Bay/2Belt/2Tots)



Play & Park Structures



SURFACING MATERIAL

Engineered Wood Fiber

MANUFACTURER CONTACT INFORMATION

Play & Park Structures
430 Chestnut Street, Suite 300
Chattanooga, TN 37402
800-727-1907
www.parkstructures.com

GENERAL PLAYGROUND ENVIRONMENT**Playground Condition:****FAIR****Area #** 2**General Site Conditions**

		Condition	Hazard	Recommendation
1	Playground Location at Facility Number of footings in area	Front of School 50		
2	Distance from roads and parking lots	10 feet		
3	Fencing-total, partial, height, type	Total - 4ft. Chain link		
4	Traffic or fence hazard	None		
5	Site conditions-level, hill, pitched	Level		
6	Drainage Problems	None		
7	Encroachment of brush or poisonous plants-where	None		
8	Bees or insects/animals noted	None		
9	Site Amenities-bench, TR, Table Condition	Tables & TR Good		
10	Border/Edging-type Condition of edging	Wood Ties Good		
11	Shade Structure or shade	Roofs & trees		
12	Signage			
	Age Appropriate Signs/Stickers?	Yes		
	Equipment Age Appropriate, 2-5, 5-12	5-12 years		
	Adult Supervision sign or sticker?	Yes		
	Warning Signs installed?			
	Hard Surface	Yes		
	Heat	Yes		
	Drawstring/Strangulation	Yes		

General Site Conditions	Condition	Hazard	Recommendation
Surface Marker signs on uprights?	Yes		
Playground Rules & General Information Sign?	No	Maint.	See Notes

13 Accessibility

Accessible Entrance 36" wide ?	Yes
Accessible path to play area ?	Yes
Accessible surface in use zone?	Yes

Notes:

It is recommended that signs be installed indicating playground rules and general information.

RIPPOWAM MIDDLE SCHOOL

AREA #2 CONDITION REPORT

		Condition	Hazard Priority	Recommendation
Small Composite Structure (Little Tikes)				
Transfer Platform		Good		
Overhead Trapeze Swings		Five "S" - Hooks wearing	Maint.	Replace five "S" - Hooks
Chin Up Bar		Good		
Overhead Horizontal Rail Ladders		One bolt missing at rung ladder bracket	Maint.	Replace one bolt at rung ladder bracket
90° Climb Around Overhead Loop Ladder		Good		
Maxi Twist Challenge		Good		
Maxi Climb Quest		One loose support post	Maint.	Monitor
Overhead Tree Climber		Five protruding bolts	B	Cut down five bolts
Stairs (2)		Stairs above 48" high should have a barrier, not a guardrail	C	Consult Manufacturer
Climbing Arc Ladder		One loose bolt at handhold	Maint.	Tighten one bolt at handhold
Double Wiggle Wall Climber		One post slightly leaning	Maint.	Monitor
Avalanche Slide		Good		
Decks (6)		One loose bracket plate at Avalanche slide	Maint.	Tighten one bolt below bracket plate
Talk Tubes (2)		Good		
Access Step (1)		Good		
Rung Ladder (1)		Good		
Surfacing	EWF 4-12"	Insufficient	A	Add EWF & level
		No wear mats at slide exits	C	See Notes
Use Zone		Good		
		Branches by Overhead Rings	Maint.	Cut back branches 7ft. from structure
Structural Stability		Good		

AREA #2 CONDITION REPORT

		Condition	Hazard Priority	Recommendation
Freestanding Equipment (Play & Park)				
9ft. Swing Set (2Bay/2Belt/2Enc.Tot)		Good		
Surfacing	EWf 8-12"	Good		
Use Zone		Good		
Structural Stability		Good		

Notes:

There are no wear mats at the slide exits or under the belt seats. ADA requires wear mats for accessibility and the prevention of holes.

It is the playground owner's responsibility to maintain the test results for the safety surfacing showing that the depth is appropriate for the fall height of the equipment in the playground.

Hazard and Maintenance Pictures
Area #2

Small Composite Structure (Little Tikes)
Overhead Trapeze Swings - Five "S" - Hooks wearing - MAINTENANCE



Overhead Horizontal Rail Ladders - One bolt missing at rung ladder bracket -
CLASS B HAZARD



Maxi Climb Quest - One loose support post - MAINTENANCE



Overhead Tree Climber - Five protruding bolts - CLASS B HAZARD



Stairs - If higher than 48" need barrier, not guardrail - CLASS C HAZARD



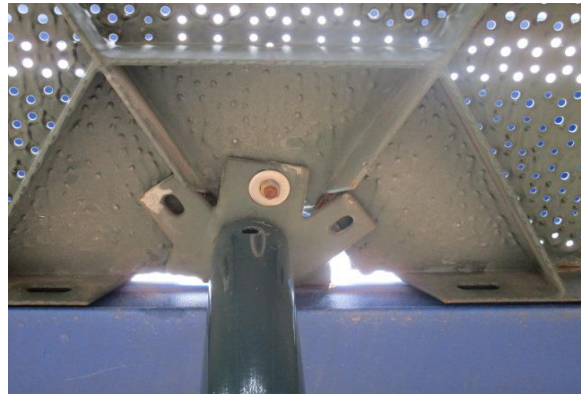
Climbing Arc Ladder - One loose bolt at handhold - MAINTENANCE



Double Wiggle Wall Climber - One post slightly leaning - MAINTENANCE



Decks (6) - One loose bracket plate at Avalanche Slide - MAINTENANCE



Surfacing - No wear mats slide exits - CLASS C HAZARD



Use Zone - Overhanging branches by Overhead Rings - MAINTENANCE

