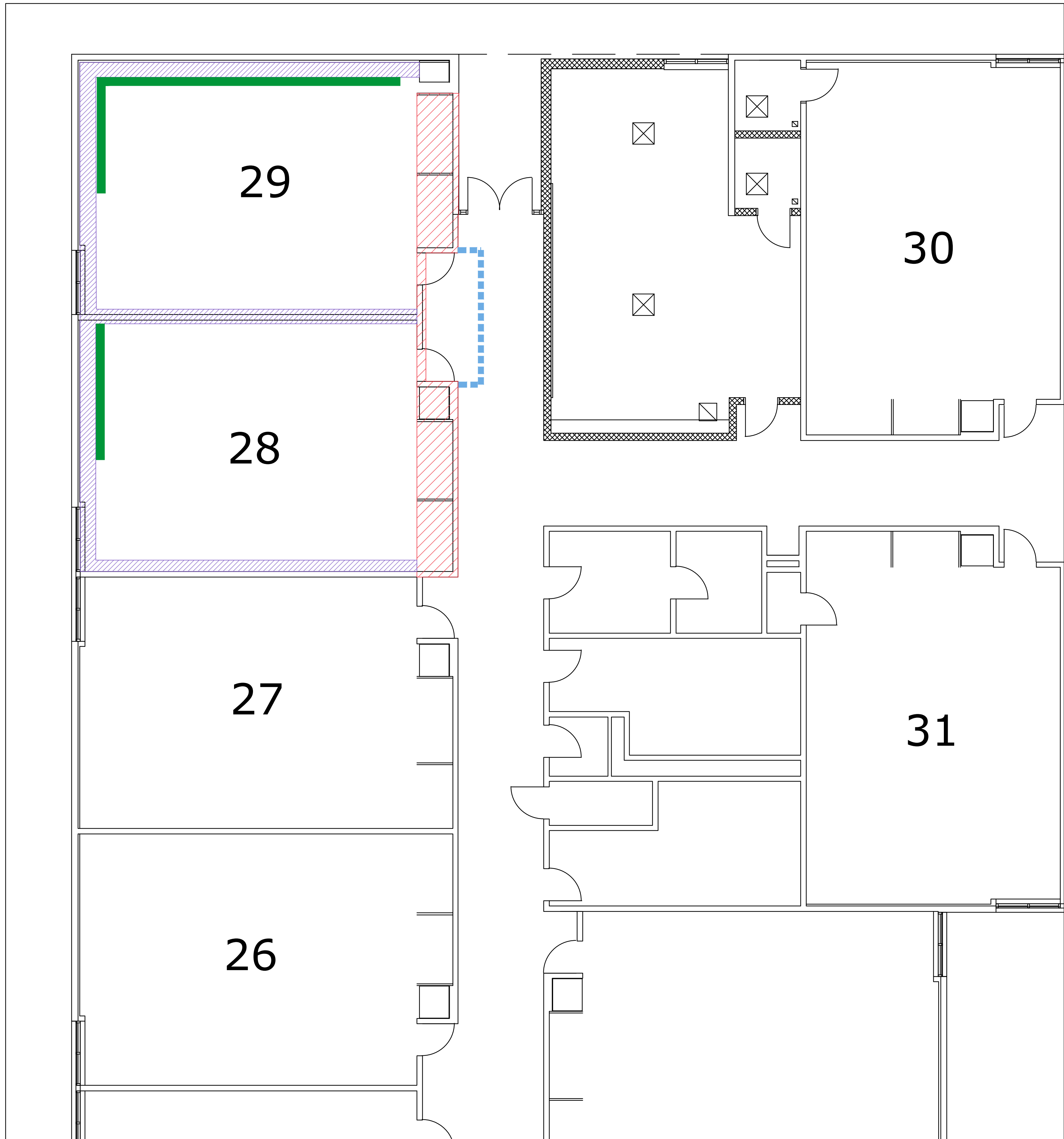


\\t\c\shared\3/7/2019
Plotted On: Mar 07, 2019 4:11pm By: wachampagne
Tighe & Bond: \\t\c\shared\3/7/2019\Projects\S\S2087 Stamford\033 Mold Remediation Consulting\Sites\Davenport\Drawings\CAD\Davenport Mold Remediation.dwg

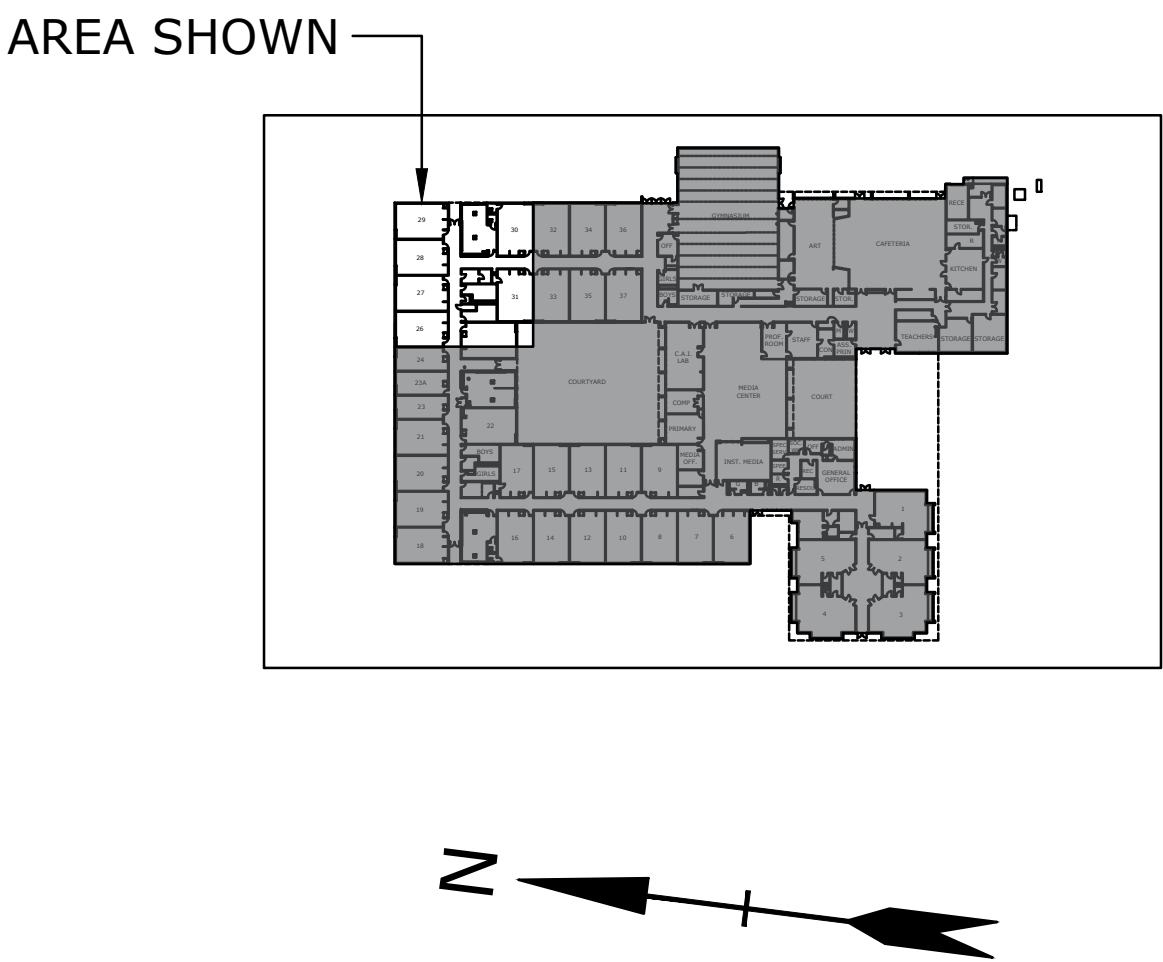


LEGEND

- REMOVE VINYL COVERING AND DRYWALL/ASBESTOS TAPING COMPOUND SOFFIT IN ENTIRETY
REMOVE WATER STAINED AND/OR MOLD GROWTH IMPACTED PIPE INSULATION ABOVE SOFFIT
CLEAN AND DISINFECT AREA
- REMOVE TACKBOARD, ASBESTOS GLUE DAUBS, AND DRYWALL/ASBESTOS TAPING COMPOUND IN ENTIRETY
REMOVE WATER IMPACTED AND/OR MOLD GROWTH IMPACTED RIGID INSULATION
CLEAN AND DISINFECT AREA
- REMOVE ASBESTOS CEMENT RADIATOR BOARDS
- HARD BARRIER

GENERAL NOTES

WORK SHALL BE CONDUCTED WITHIN NEGATIVE PRESSURE ASBESTOS CONTAINMENTS
REMOVE WATER STAINED AND/OR GROWTH CEILING TILES FOR DISPOSAL
REMOVE WATER STAINED AND/OR MOLD GROWTH IMPACTED PIPE INSULATION ABOVE CEILINGS
CLEAN AND DISINFECT METAL DIFFUSERS AND VENTS
(REMOVE IMPACTED ADJACENT CEILING TILES IF UNABLE TO BE CLEANED)



**Davenport
Ridge
Elementary
School**

City of Stamford

Stamford, CT

MARK	DATE	DESCRIPTION
PROJECT NO: S2087		
DATE: 3/7/2019		
FILE: Davenport Mold Remediation.dwg		
DRAWN BY: WAC		
CHECKED: XX		
APPROVED: XX		

AREA 1

SCALE: NOT TO SCALE

FIGURE 3.1