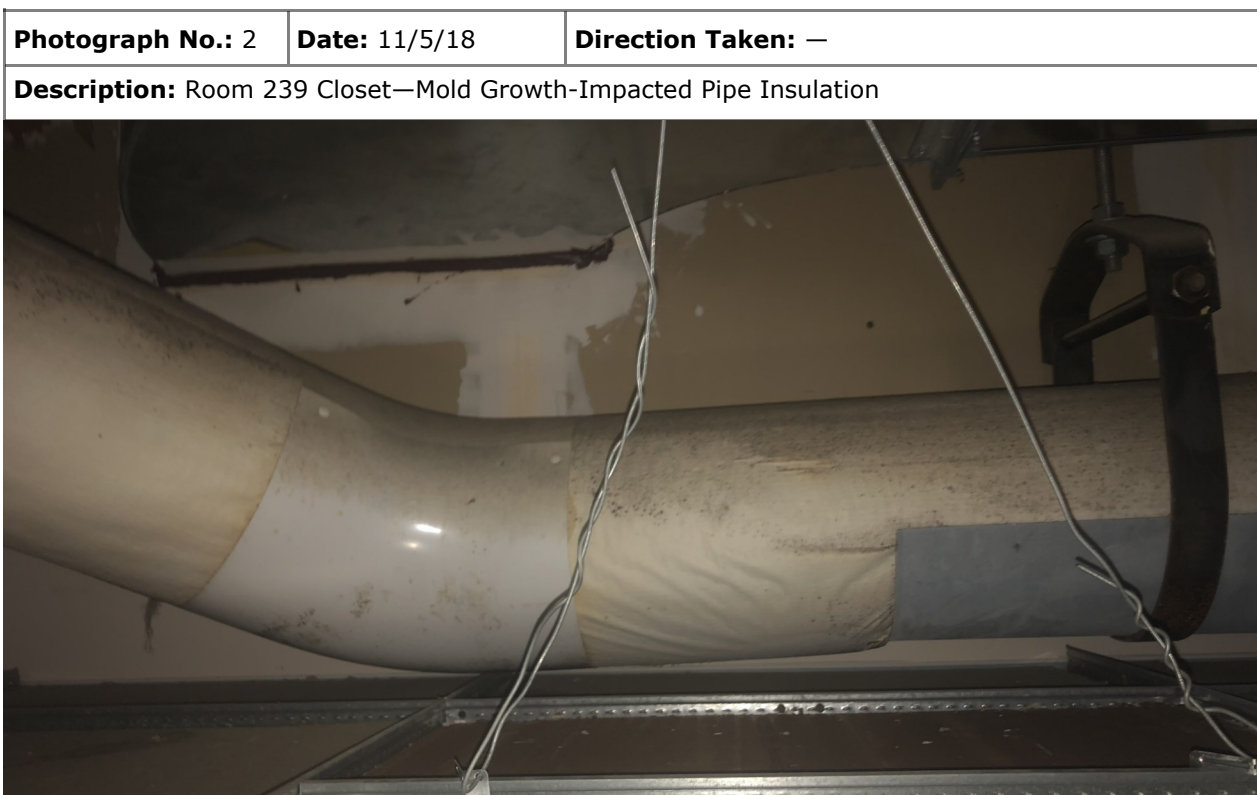
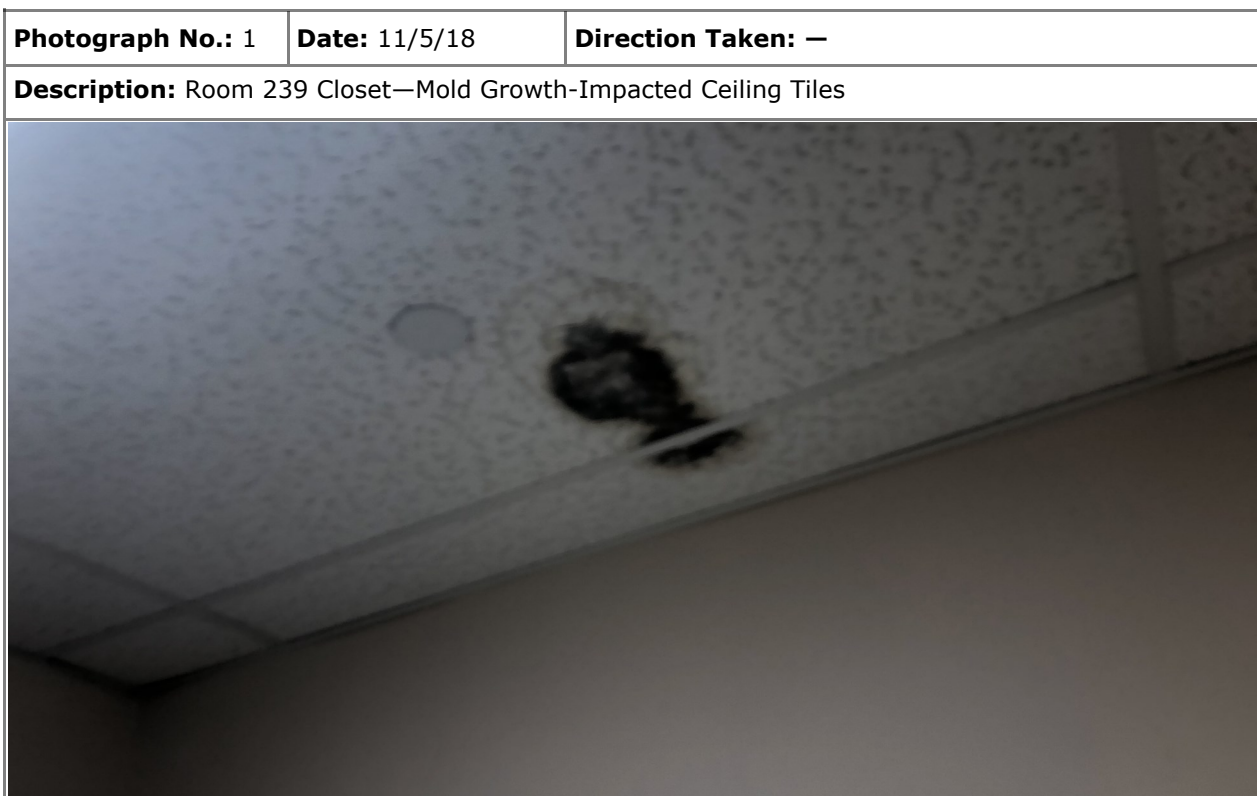


Assessment & Growth Removal -Photographic Log **Tighe&Bond**

Client: City of Stamford Mold Task Force

Job Number: S-2087-033

Site: Hart Magnet Elementary School

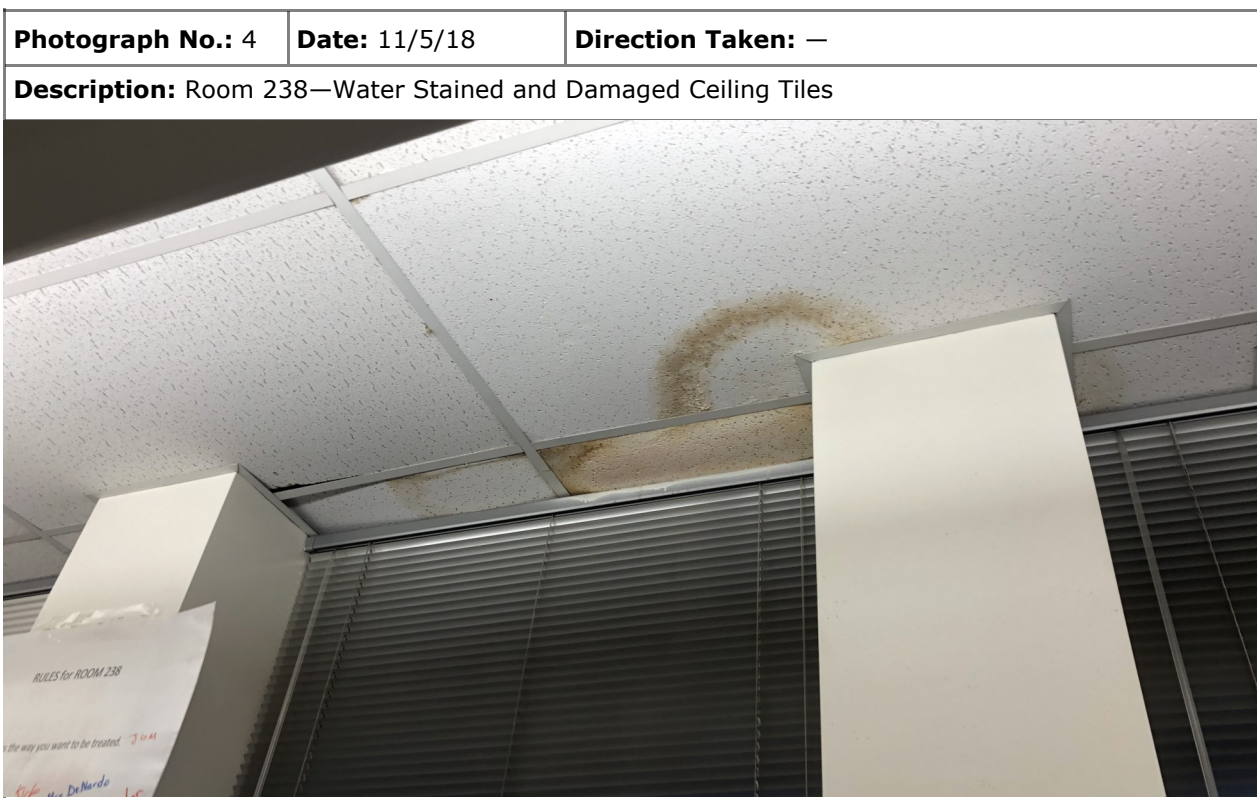
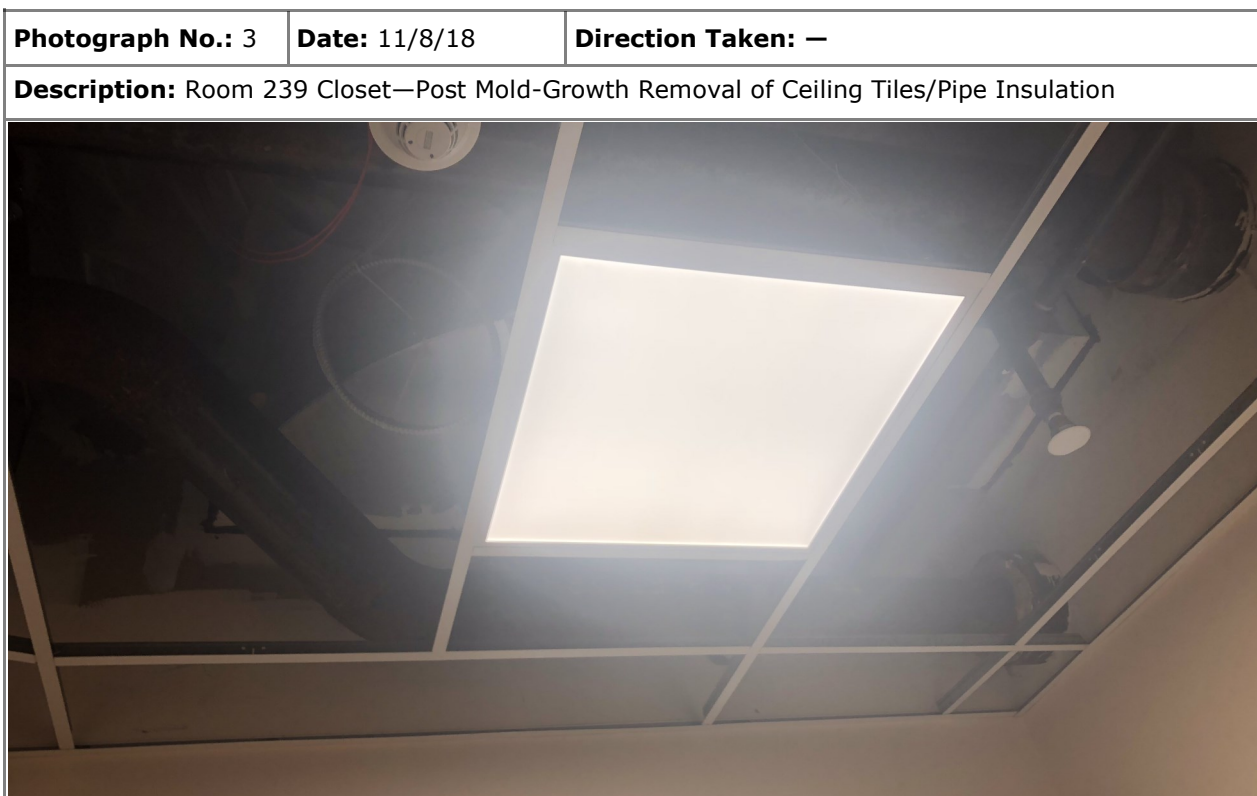


Assessment & Growth Removal -Photographic Log **Tighe&Bond**

Client: City of Stamford Mold Task Force

Job Number: S-2087-033

Site: Hart Magnet Elementary School

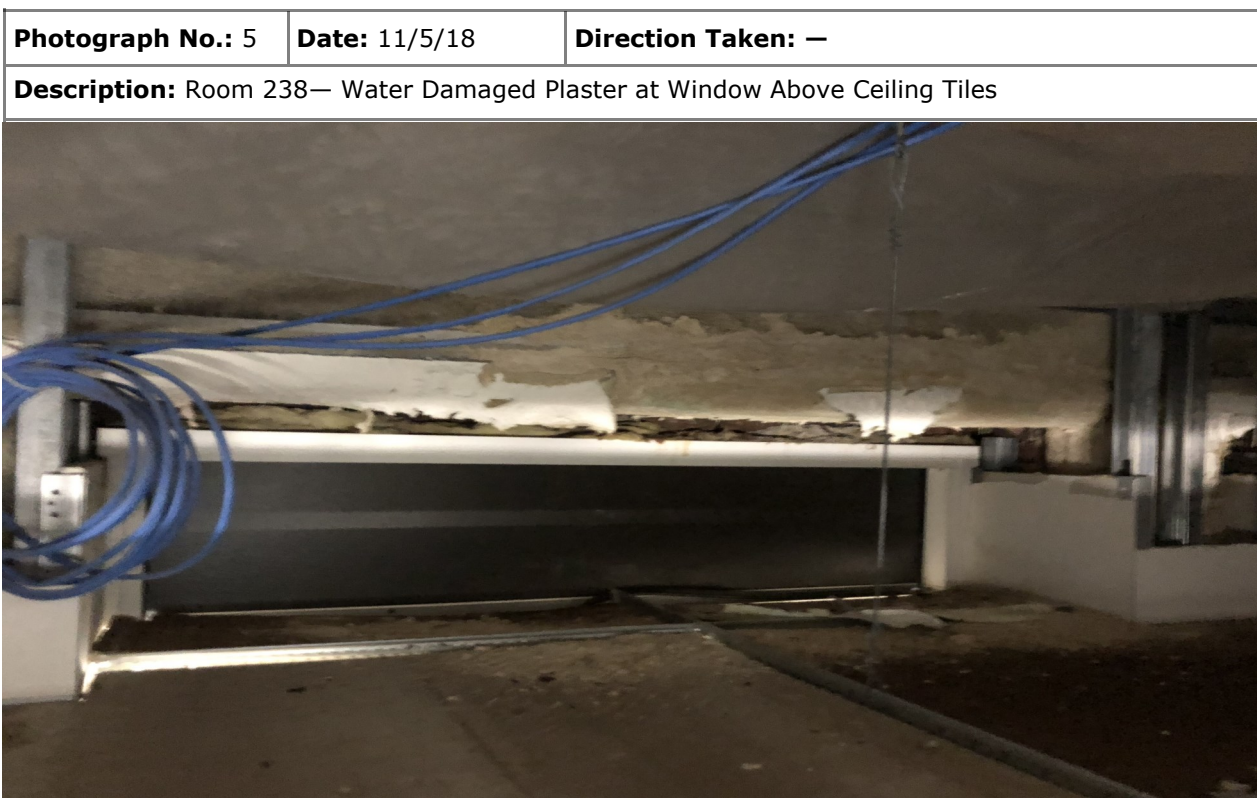


Assessment & Growth Removal -Photographic Log **Tighe&Bond**

Client: City of Stamford Mold Task Force

Job Number: S-2087-033

Site: Hart Magnet Elementary School



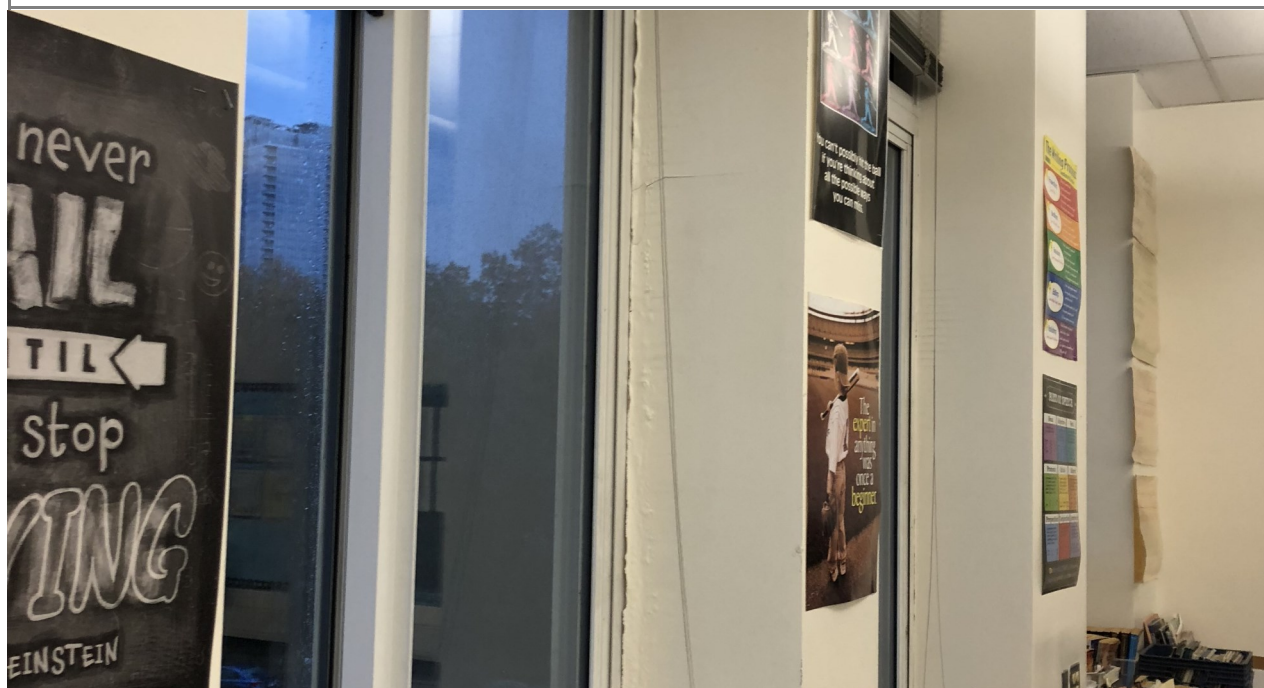
Assessment & Growth Removal -Photographic Log **Tighe&Bond**

Client: City of Stamford Mold Task Force

Job Number: S-2087-033

Site: Hart Magnet Elementary School

Photograph No.: 7	Date: 11/5/18	Direction Taken: —
Description: Room 232— Water Damaged Drywall at Window		



Photograph No.: 8	Date: 11/5/18	Direction Taken: —
Description: Room 232 — Water Damaged Window Sill		



Assessment & Growth Removal -Photographic Log **Tighe&Bond**

Client: City of Stamford Mold Task Force

Job Number: S-2087-033

Site: Hart Magnet Elementary School



Assessment & Growth Removal -Photographic Log **Tighe&Bond**

Client: City of Stamford Mold Task Force

Job Number: S-2087-033

Site: Hart Magnet Elementary School

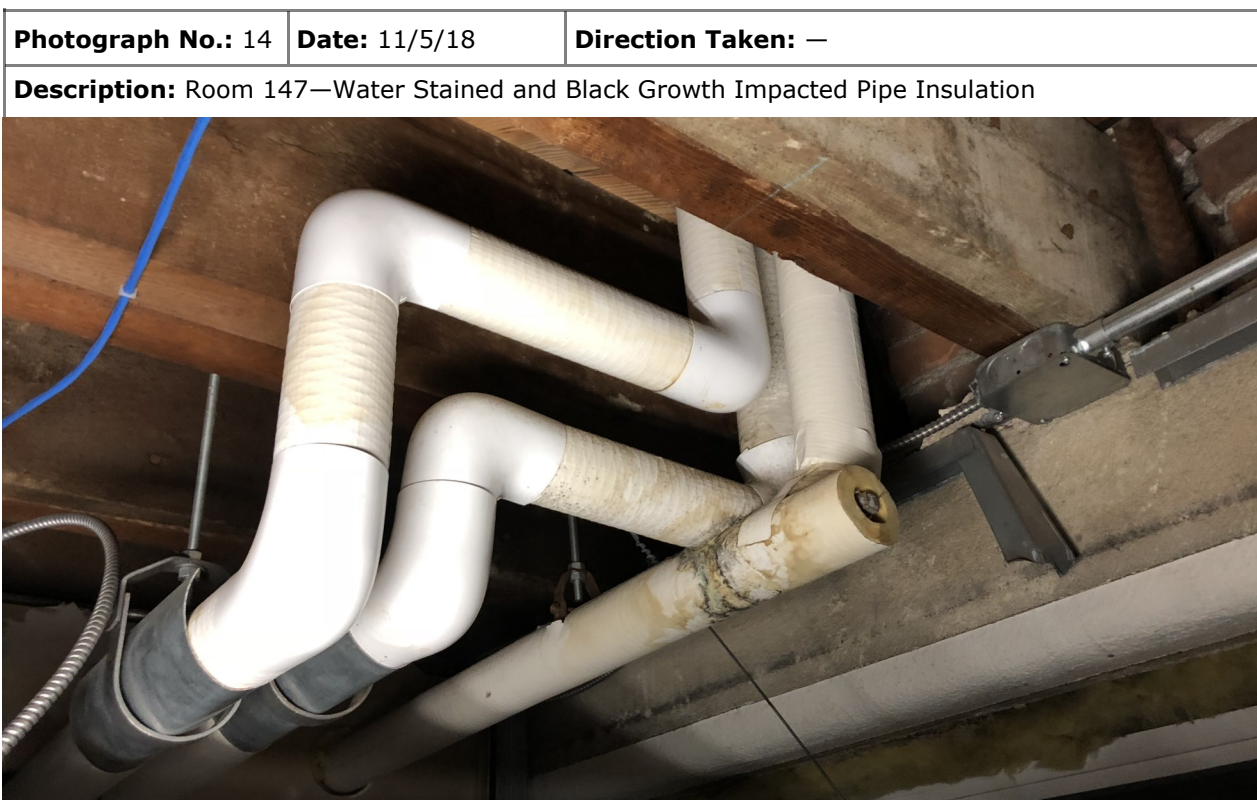


Assessment & Growth Removal -Photographic Log Tighe&Bond

Client: City of Stamford Mold Task Force

Job Number: S-2087-033

Site: Hart Magnet Elementary School



Assessment & Growth Removal -Photographic Log **Tighe&Bond**

Client: City of Stamford Mold Task Force

Job Number: S-2087-033

Site: Hart Magnet Elementary School

Photograph No.: 15	Date: 11/8/18	Direction Taken: —
Description: Room 147— Post-Removal Water Stained/Growth Impacted Ceiling Tiles/Pipe Insulation		



Photograph No.: 16	Date: 11/5/18	Direction Taken: —
Description: Room 140 Storage —Water Stained and Black Growth Impacted Ceiling Tile		

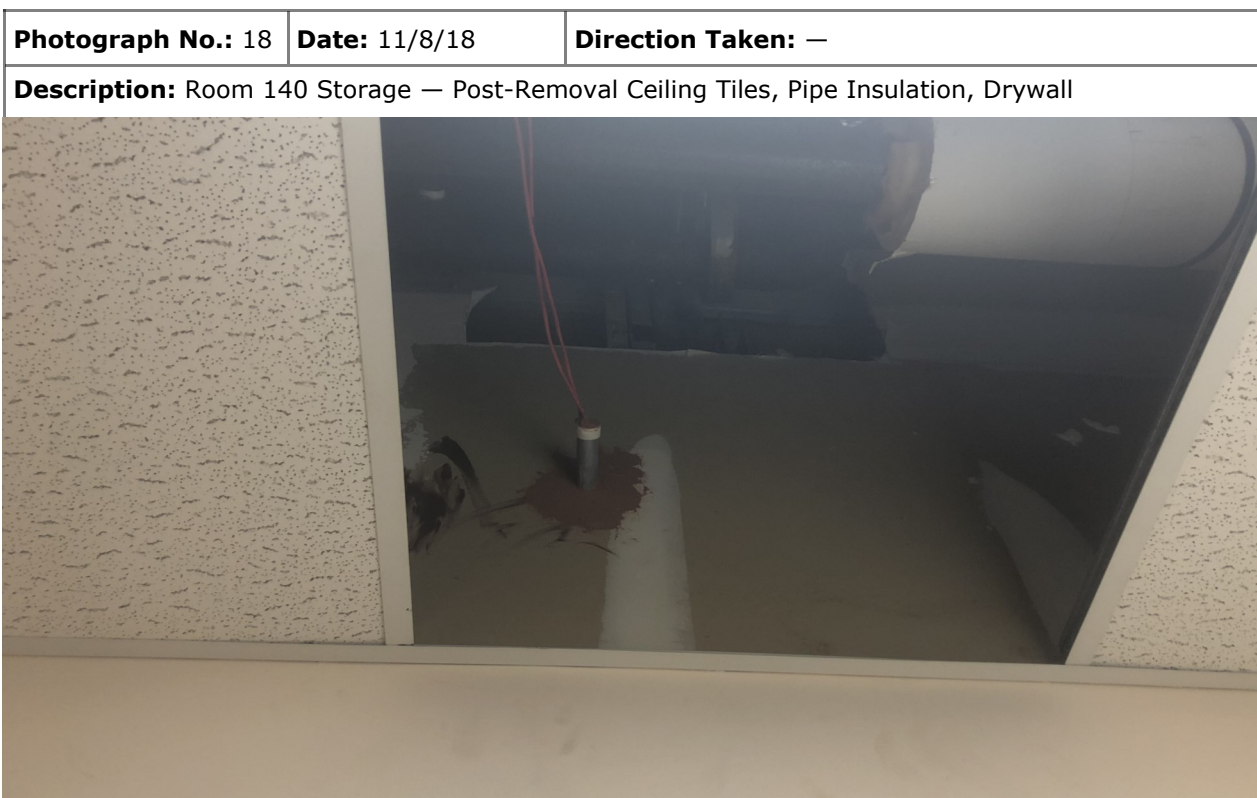


Assessment & Growth Removal -Photographic Log **Tighe&Bond**

Client: City of Stamford Mold Task Force

Job Number: S-2087-033

Site: Hart Magnet Elementary School

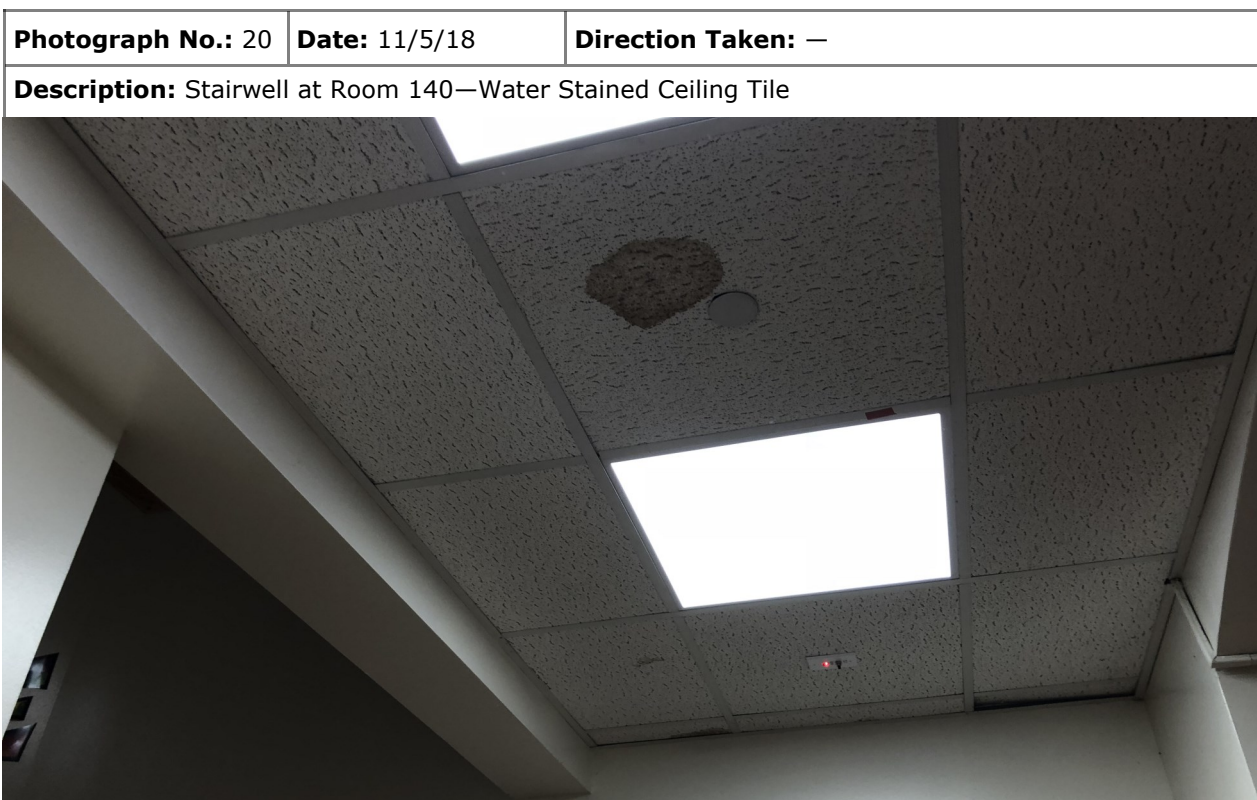


Assessment & Growth Removal -Photographic Log **Tighe&Bond**

Client: City of Stamford Mold Task Force

Job Number: S-2087-033

Site: Hart Magnet Elementary School



Assessment & Growth Removal -Photographic Log **Tighe&Bond**

Client: City of Stamford Mold Task Force

Job Number: S-2087-033

Site: Hart Magnet Elementary School

Photograph No.: 21	Date: 11/5/18	Direction Taken: —
Description: Room 040—Black Growth on HVAC Diffuser and Adjacent Ceiling Tiles		



Photograph No.: 22	Date: 11/5/18	Direction Taken: —
Description: Boiler Room Entryway—Water Stained and Black Growth Impacted Pipe Insulation		

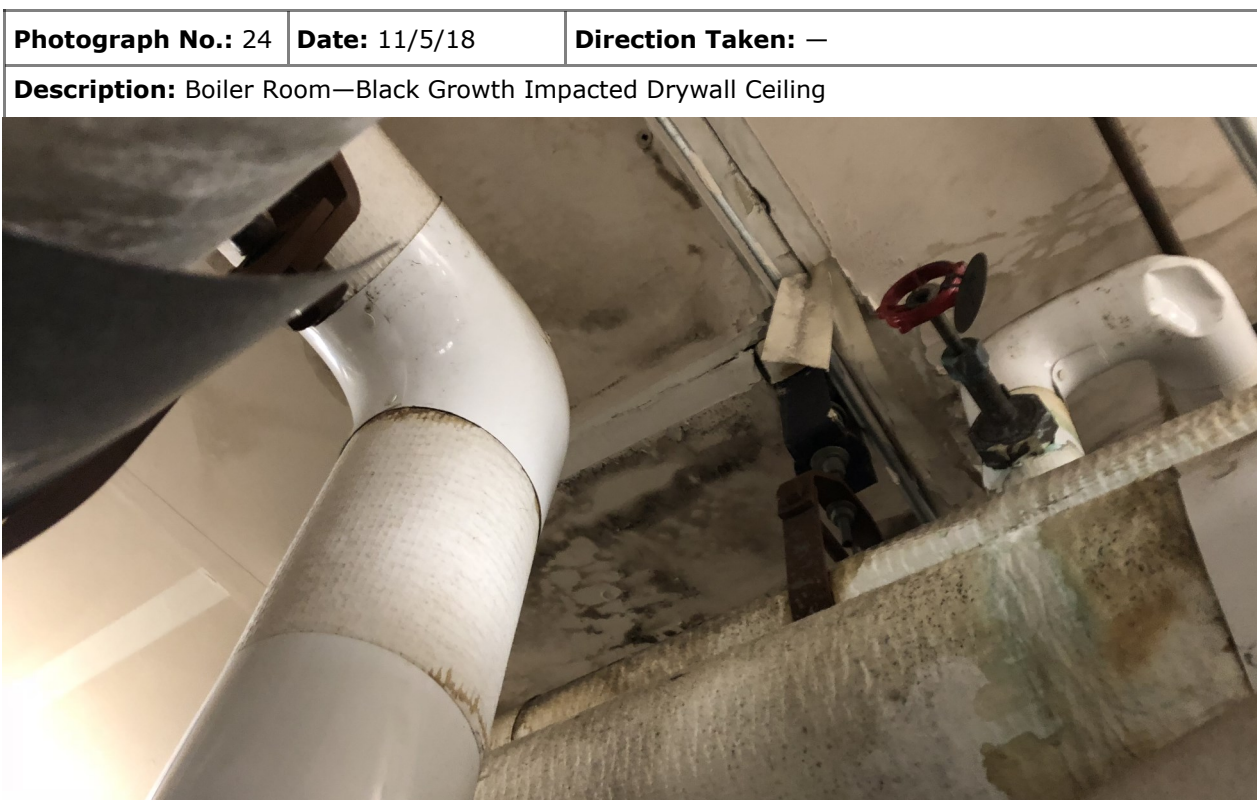
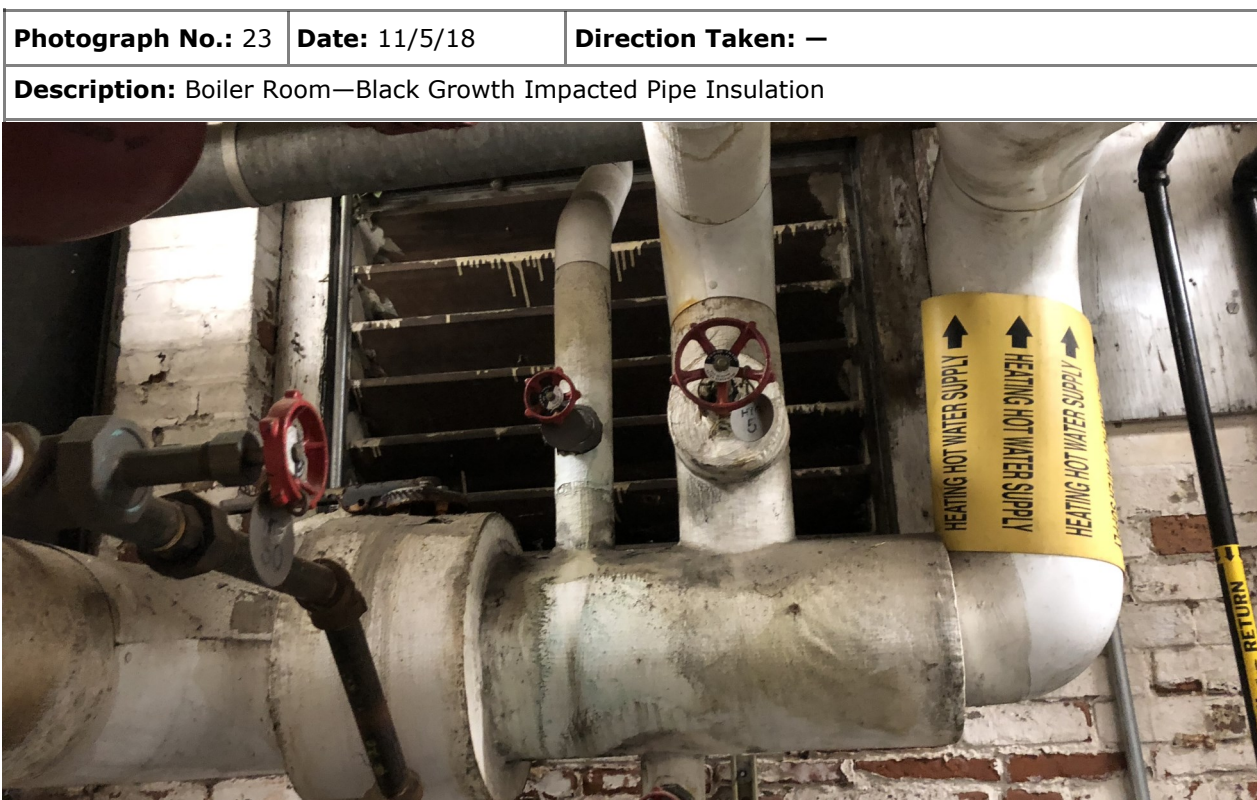


Assessment & Growth Removal -Photographic Log **Tighe&Bond**

Client: City of Stamford Mold Task Force

Job Number: S-2087-033

Site: Hart Magnet Elementary School



Assessment & Growth Removal -Photographic Log **Tighe&Bond**

Client: City of Stamford Mold Task Force

Job Number: S-2087-033

Site: Hart Magnet Elementary School

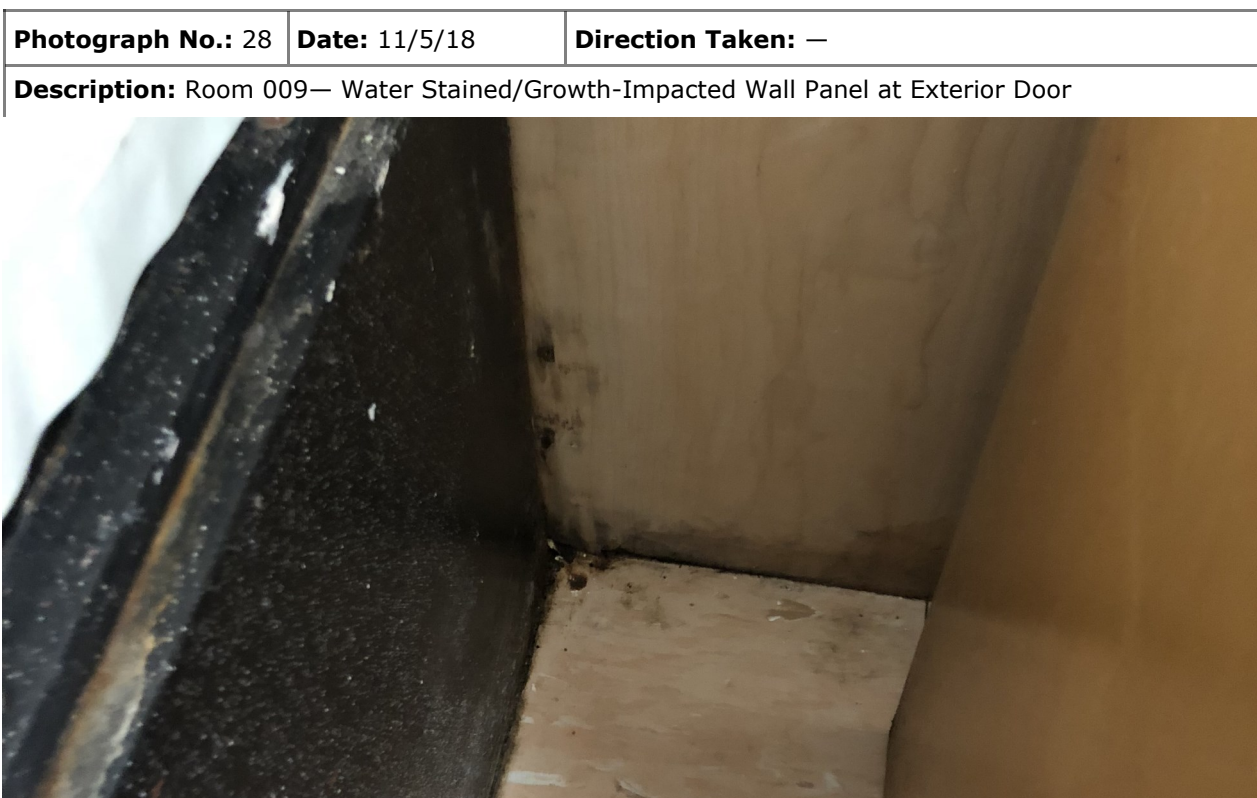


Assessment & Growth Removal -Photographic Log **Tighe&Bond**

Client: City of Stamford Mold Task Force

Job Number: S-2087-033

Site: Hart Magnet Elementary School



Assessment & Growth Removal -Photographic Log **Tighe&Bond**

Client: City of Stamford Mold Task Force

Job Number: S-2087-033

Site: Hart Magnet Elementary School



Assessment & Growth Removal -Photographic Log **Tighe&Bond**

Client: City of Stamford Mold Task Force

Job Number: S-2087-033

Site: Hart Magnet Elementary School

